

UNITED STATES  
DEPARTMENT OF THE INTERIOR  
GEOLOGICAL SURVEY

30-015-20271

## APPLICATION FOR PERMIT TO DRILL, DEEPEN, OR PLUG BACK

## 1a. TYPE OF WORK

DRILL ☒DEEPEN ☐PLUG BACK ☐

## b. TYPE OF WELL

OIL  
WELL ☐GAS  
WELL ☐OTHER ☐SINGLE  
ZONE ☐MULTIPLE  
ZONE ☐

## 2. NAME OF OPERATOR

Yates Petroleum Corporation

## 3. ADDRESS OF OPERATOR

207 South 4th Street - Artesia, New Mexico 88210

## 4. LOCATION OF WELL (Report location clearly and in accordance with any State requirements.\*)

At surface

NW NW 660' FNL and 990' FWL of Sec. 25-18S-30E

At proposed prod. zone

## 14. DISTANCE IN MILES AND DIRECTION FROM NEAREST TOWN OR POST OFFICE\*

Approx 5 miles fouth of Loco Hill, New Mex.

## 10. DISTANCE FROM PROPOSED\*

LOCATION TO NEAREST  
PROPERTY OR LEASE LINE, FT.  
(Also to nearest drlg. unit line, if any)

## 16. NO. OF ACRES IN LEASE

17. NO. OF ACRES ASSIGNED  
TO THIS WELL

40

## 18. DISTANCE FROM PROPOSED LOCATION\*

TO NEAREST WELL, DRILLING, COMPLETED,  
OR APPLIED FOR, ON THIS LEASE, FT.

## 19. PROPOSED DEPTH

Approx. 3600'

## 20. ROTARY OR CABLE TOOLS

Cable

## 21. ELEVATIONS (Show whether DF, RT, GR, etc.)

3500' GR

## 22. APPROX. DATE WORK WILL START\*

12-12-69

## 23.

## PROPOSED CASING AND CEMENTING PROGRAM

SIZE OF HOLE	SIZE OF CASING	WEIGHT PER FOOT	SETTING DEPTH	QUANTITY OF CEMENT
10"	8-5/8"	24#	770' Approx.	Circulate
8"	5 1/2"	14#	3600' Approx.	Circulate
8"	4 1/2"	9#	3600' Approx.	Circulate

It is our intention to drill a 10" hole into the top of the salt, set 8 5/8" casing at approx 770' and ~~granulate with 100 cu. yd. cement~~ <sup>granulate with</sup> then reduce hole to 8" and drill to 3600', set 5 1/2" or 4 1/2" casing and ~~granulate with approx 200 cu. yd. cement~~.

RECEIVED

DEC 4 1969

O. C. C.  
ARTESIA, OFFICERECEIVED  
DEC-11-1969  
U. S. GEOLOGICAL SURVEY  
ARTESIA

IN ABOVE SPACE DESCRIBE PROPOSED PROGRAM: If proposal is to deepen or plug back, give data on present productive zone and proposed new productive zone. If proposal is to drill or deepen directionally, give pertinent data on subsurface locations and measured and true vertical depths. Give blowout preventer program, if any.

## 24.

SIGNED

Richard C. Norman

TITLE

Geologist

DATE

12-1-69

(This space for Federal or State office use)

PERMIT NO.

APPROVAL DATE

APPROVED BY

TITLE

DATE

CONDITIONS OF APPROVAL, IF ANY:

**N. MEXICO OIL CONSERVATION COMMISSION  
WELL LOCATION AND ACREAGE DEDICATION PLAT**

Form C-102  
Supersedes C-128  
Effective 1-1-65

All distances must be from the outer boundaries of the Section.

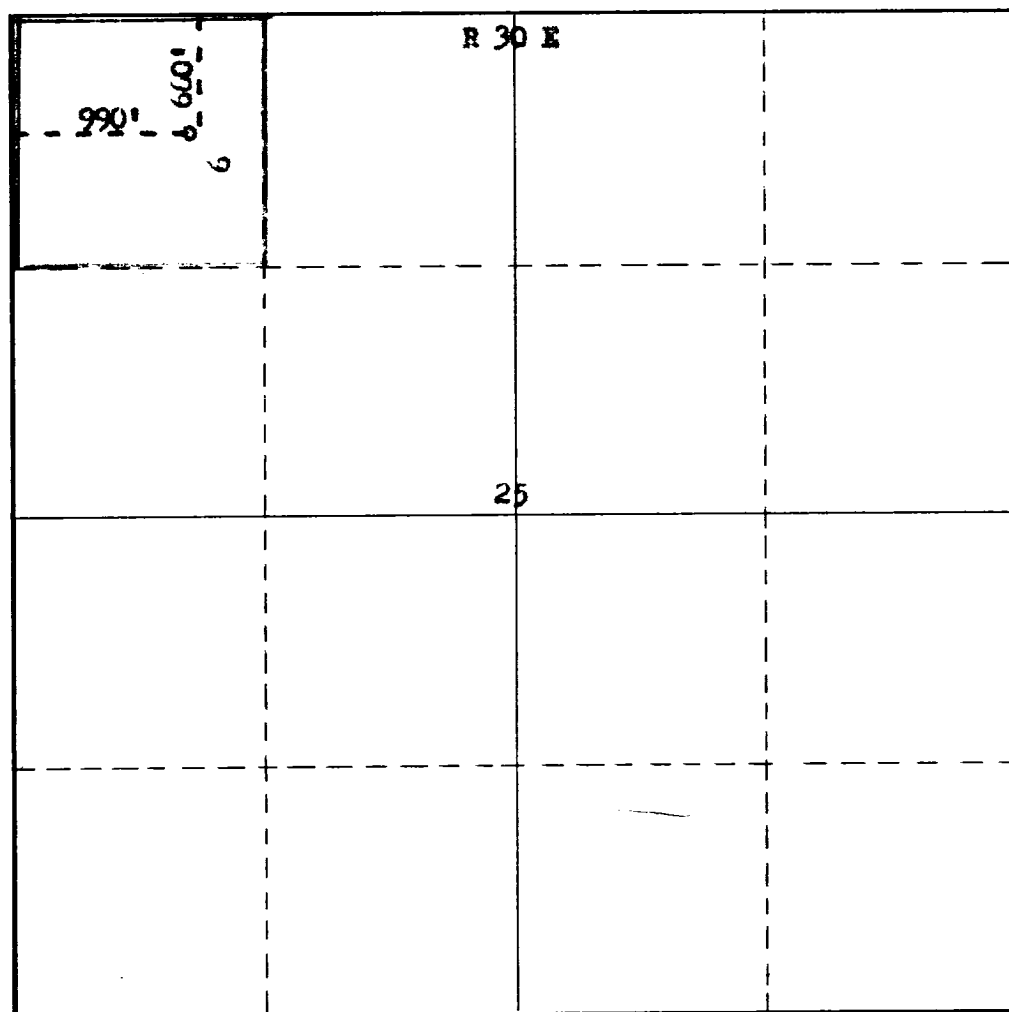
Operator <b>Yates Petroleum Corporation</b>			Lease <b>Creek AL</b>		Well No. <b>6</b>
Unit Letter <b>D</b>	Section <b>25</b>	Township <b>18 South</b>	Range <b>30 East</b>	County <b>Eddy</b>	
Actual Footage Location of Well: <div style="display: flex; justify-content: space-between;"> <span><b>660</b> feet from the <b>North</b> line and</span> <span><b>990</b> feet from the <b>West</b> line</span> </div>					
Ground Level Elev: <b>3500</b>	Producing Formation <b>Queen</b>	Pool <b>Shugart</b>		Dedicated Acreage: <b>40</b> Acres	

1. Outline the acreage dedicated to the subject well by colored pencil or hachure marks on the plat below.
2. If more than one lease is dedicated to the well, outline each and identify the ownership thereof (both as to working interest and royalty).
3. If more than one lease of different ownership is dedicated to the well, have the interests of all owners been consolidated by communitization, unitization, force-pooling, etc?

☐ Yes    ☐ No    If answer is "yes," type of consolidation \_\_\_\_\_

If answer is "no," list the owners and tract descriptions which have actually been consolidated. (Use reverse side of this form if necessary.) \_\_\_\_\_

No allowable will be assigned to the well until all interests have been consolidated (by communitization, unitization, forced-pooling, or otherwise) or until a non-standard unit, eliminating such interests, has been approved by the Commission.



**CERTIFICATION**

I hereby certify that the information contained herein is true and complete to the best of my knowledge and belief.

*Richard C. Norman*

Name  
**Richard C. Norman**

Position  
**Geologist**

Company  
**Yates Petr. Corporation**

Date  
**12-1-69**

I hereby certify that the well location shown on this plat was plotted from field notes of actual surveys made by me or under my supervision, and that the same is true and correct to the best of my knowledge and belief.

Date Surveyed

**November 29, 1969**

Registered Professional Engineer and/or Land Surveyor

Certificate No.

**H.M. 54 BROWN**

0 330 660 990 1320 1650 1980 2310 2640 2000 1500 1000 500 0

T  
18  
S