



UNITED STATES
DEPARTMENT OF THE INTERIOR
GEOLOGICAL SURVEY
P. O. Drawer 1857
Roswell, New Mexico 88201

IN REPLY REFER TO:

RECEIVED

MAR 6 1970

D. C. C.
ARTESIA, OFFICE

March 5, 1970

ILLEGIBLE

Yates Petroleum Corporation
207 South 4th Street
Artesia, New Mexico 88210

Gentlemen:

Your Notice of Intention to Drill well No. 8-Creek "AL" in the SE 1/4 sec. 25, T. 18 N., R. 30 E., S.M.F.M., Siskiyou County, New Mexico, Lease Las Cruces 008990(b), to a depth of 3500 feet to test the Queen formation in the Potash Area, is hereby approved.

One copy of the Notice is returned herewith. Please notify the District Engineer, Geological Survey, Post Office Drawer U, Artesia, New Mexico, 88210, in sufficient time for a representative to witness all cementing operations.

Sincerely yours,

(ORIG. SGD.) CARL C. TRAYWICK

CARL C. TRAYWICK
Acting Oil and Gas Supervisor

Attachment

cc:

Washington
Mining Branch (2)
BKKCC-Artesia (2) (w/2 cys Notice) ✓
Artesia (w/cy Notice)
Roswell (2) (w/cy Notice)

RECEIVED

RECEIVED

RECEIVED

RECEIVED

UNITED STATES
DEPARTMENT OF THE INTERIOR
GEOLOGICAL SURVEY



UNITED STATES
DEPARTMENT OF THE INTERIOR
GEOLOGICAL SURVEY

30-015-20289

APPLICATION FOR PERMIT TO DRILL, DEEPEN, OR PLUG BACK

1a. TYPE OF WORK

DRILL ☒

DEEPEN ☐

PLUG BACK ☐

b. TYPE OF WELL

OIL WELL ☒

GAS WELL ☐

OTHER

SINGLE ZONE ☐

MULTIPLE ZONE ☐

2. NAME OF OPERATOR

Yates Petroleum Corporation

3. ADDRESS OF OPERATOR

207 South 4th Street - Artesia, New Mexico

4. LOCATION OF WELL (Report location clearly and in accordance with any State requirements.)*
At surface

NE SE NW 1650' FNL & 2310' FWL of
Section 25-18S-30E

At proposed prod. zone

14. DISTANCE IN MILES AND DIRECTION FROM NEAREST TOWN OR POST OFFICE*

Approx. 7 miles south of Loco Hill, N.M.

15. DISTANCE FROM PROPOSED*
LOCATION TO NEAREST
PROPERTY OR LEASE LINE, FT.
(Also to nearest drlg. unit line, if any)

16. NO. OF ACRES IN LEASE

17. NO. OF ACRES ASSIGNED
TO THIS WELL

18. DISTANCE FROM PROPOSED LOCATION*
TO NEAREST WELL, DRILLING, COMPLETED,
OR APPLIED FOR, ON THIS LEASE, FT.

19. PROPOSED DEPTH

Approx. 3600'

20. ROTARY OR CABLE TOOLS

Cable

21. ELEVATIONS (Show whether DF, RT, GR, etc.)

Unknown

22. APPROX. DATE WORK WILL START*

23.

PROPOSED CASING AND CEMENTING PROGRAM

SIZE OF HOLE	SIZE OF CASING	WEIGHT PER FOOT	SETTING DEPTH	QUANTITY OF CEMENT
10"	8 5/8"	24#	Approx. 770'	100 sx.
8"	5 1/2"	14#	" 3600'	200 sx.
8"	4 1/2"	9#	" 3600'	200 sx.

It is our intention to drill a 10" hole into the top of the salt, set 8 5/8" casing at approx. 770' and cement with 100 sx. Reduce hole to 8" and drill to approx 3600' and set 5 1/2" or 4 1/2" casing and cement with approx 200 sx.

RECEIVED

MAR 6 1970

U. S. G. C. C.
ARTESIA, OFFICE

RECEIVED

MAR 2 1970

U. S. GEOLOGICAL SURVEY
ARTESIA, NEW MEXICO

IN ABOVE SPACE DESCRIBE PROPOSED PROGRAM: If proposal is to deepen or plug back, give data on present productive zone and proposed new productive zone. If proposal is to drill or deepen directionally, give pertinent data on subsurface locations and measured and true vertical depths. Give blowout preventer program, if any.

24.

SIGNED

Richard C. Norrman

TITLE

Geologist

DATE

3-2-70

(This space for Federal or State office use)

PERMIT NO.

APPROVAL DATE

APPROVED BY

TITLE

DATE

CONDITIONS OF APPROVAL, IF ANY:

**NEW MEXICO OIL CONSERVATION COMMISSION
WELL LOCATION AND ACREAGE DEDICATION PLAT**

Form C-102
Supersedes C-128
Effective 1-1-65

All distances must be from the outer boundaries of the Section.

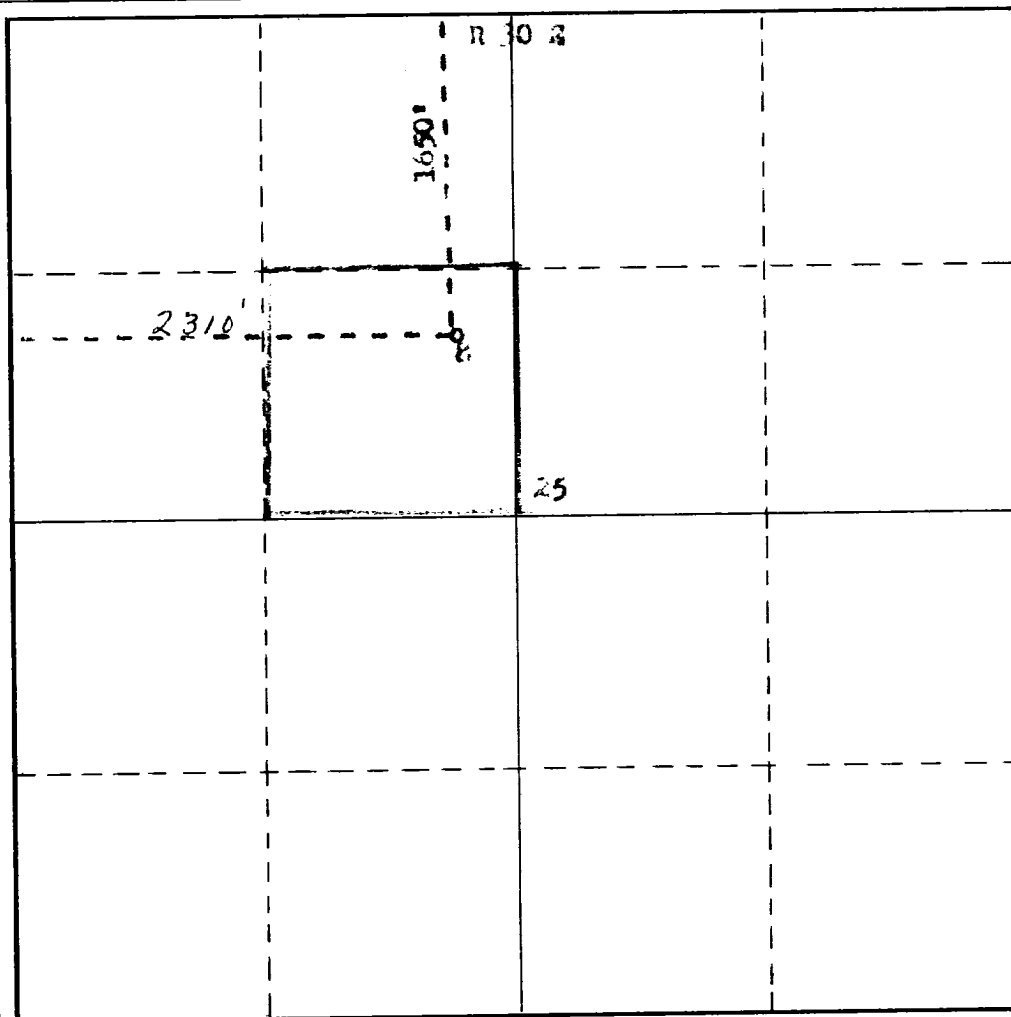
Operator Yates Petroleum Corporation			Lease Green A.		Well No. 1
Unit Letter F	Section 25	Township 18 South	Range 30 East	County Deer	
Actual Footage Location of Well: 1550 feet from the North line and 2310 feet from the West line					
Ground Level Elev.	Producing Formation Queen		Pool Shugart		Dedicated Acreage: 40 Acres

1. Outline the acreage dedicated to the subject well by colored pencil or hachure marks on the plat below.
2. If more than one lease is dedicated to the well, outline each and identify the ownership thereof (both as to working interest and royalty).
3. If more than one lease of different ownership is dedicated to the well, have the interests of all owners been consolidated by communitization, unitization, force-pooling, etc?

☐ Yes ☐ No If answer is "yes," type of consolidation _____

If answer is "no," list the owners and tract descriptions which have actually been consolidated. (Use reverse side of this form if necessary.) _____

No allowable will be assigned to the well until all interests have been consolidated (by communitization, unitization, forced-pooling, or otherwise) or until a non-standard unit, eliminating such interests, has been approved by the Commission.



CERTIFICATION

I hereby certify that the information contained herein is true and complete to the best of my knowledge and belief.

Richard C. Norman

Name
Richard C. Norman

Position
Geologist

Company
Yates Pet. Corporation

Date
3-2-70

I hereby certify that the well location shown on this plat was plotted from field notes of actual surveys made by me or under my supervision, and that the same is true and correct to the best of my knowledge and belief.

Date Surveyed
February 25, 1970

Registered Professional Engineer and/or Land Surveyor
JAMES H. BROWN

Certificate No.
N.M.O.C. 24

0 330 660 990 1320 1650 1980 2310 2640 2000 1500 1000 500 0