



UNITED STATES
DEPARTMENT OF THE INTERIOR
GEOLOGICAL SURVEY
P. O. Drawer 1877
Roswell, New Mexico 88201

IN REPLY REFER TO:

RECEIVED

MAR 6 1970

O. C. C.
ARTESIA, OFFICE

March 5, 1970

Yates Petroleum Corporation
207 South 4th Street
Artesia, New Mexico 88210

ILLEGIBLE

Gentlemen:

Your Notice of Intention to Drill well No. 9-Creek "AL" in the SW 1/4 sec. 25, T. 18 S., R. 30 E., N.M.P.M., Sibley County, New Mexico, lease Las Cruces 328990(b), to a depth of 3600 feet to test the Queen formation in the Potash Area, is hereby approved.

One copy of the Notice is returned herewith. Please notify the District Engineer, Geological Survey, Post Office Drawer U, Artesia, New Mexico, 88210, in sufficient time for a representative to witness all cementing operations.

Sincerely yours,

(ORIGINAL) CARL C. TRAWICK

CARL C. TRAWICK
Acting Oil and Gas Supervisor

Attachment

cc:
Washington
Mining Branch (2)
BMOCC-Artesia (2) (v/2 cys Notice) ✓
Artesia (v/cy Notice)
Roswell (2) (v/cy Notice)

UNITED STATES
DEPARTMENT OF THE INTERIOR
GEOLOGICAL SURVEY

30-015-20290

APPLICATION FOR PERMIT TO DRILL, DEEPEN, OR PLUG BACK

1a. TYPE OF WORK
DRILL ☒ DEEPEN ☐ PLUG BACK ☐

b. TYPE OF WELL
OIL WELL ☒ GAS WELL ☐ OTHER ☐ SINGLE ZONE ☐ MULTIPLE ZONE ☐

2. NAME OF OPERATOR
Yates Petroleum Corporation

3. ADDRESS OF OPERATOR
207 South 4th Street - Artesia, New Mexico 88210

4. LOCATION OF WELL (Report location clearly and in accordance with any State requirements.*)
At surface
NE SW NW 990' FWL and 1650' FNL of Sec. 25-18S-30E
At proposed prod. zone

14. DISTANCE IN MILES AND DIRECTION FROM NEAREST TOWN OR POST OFFICE*
Approx. 7 miles So. Loco Hills, N.M.

10. DISTANCE FROM PROPOSED* LOCATION TO NEAREST PROPERTY OR LEASE LINE, FT. (Also to nearest drlg. unit line, if any)
18. DISTANCE FROM PROPOSED LOCATION* TO NEAREST WELL, DRILLING, COMPLETED, OR APPLIED FOR, ON THIS LEASE, FT.
16. NO. OF ACRES IN LEASE
19. PROPOSED DEPTH
Approx. 3600'

21. ELEVATIONS (Show whether DF, RT, GR, etc.)
3486' GR

23. PROPOSED CASING AND CEMENTING PROGRAM

SIZE OF HOLE	SIZE OF CASING	WEIGHT PER FOOT	SETTING DEPTH	QUANTITY OF CEMENT
10"	8-5/8"	24#	Approx 770'	Circulate
8"	5 1/2"	14#	" 3600'	Circulate
8"	4 1/2"	9#	" 3600'	Circulate

It is our intention to drill a 10" hole into the top of the salt, set 8 5/8" casing at approx. 770' and circulate the cement. Then reduce the hole to 8" and drill to approx. 3600', set 5 1/2" or 4 1/2" casing and circulate the cement.

RECEIVED
MAR 6 1970
O. C. C.
ARTESIA OFFICE

RECEIVED
MAR 2 1970
U. S. GEOLOGICAL SURVEY
ARTESIA, NEW MEXICO

IN ABOVE SPACE DESCRIBE PROPOSED PROGRAM: If proposal is to deepen or plug back, give data on present productive zone and proposed new productive zone. If proposal is to drill or deepen directionally, give pertinent data on subsurface locations and measured and true vertical depths. Give blowout preventer program, if any.

24. SIGNED Richard C. Norman TITLE Geologist DATE 3-2-70

(This space for Federal or State office use)

PERMIT NO. _____ APPROVAL DATE _____

APPROVED BY _____ TITLE _____ DATE _____
CONDITIONS OF APPROVAL, IF ANY:

NEW MEXICO OIL CONSERVATION COMMISSION
WELL LOCATION AND ACREAGE DEDICATION PLAT

Form C-102
Supersedes C-128
Effective 1-1-65

All distances must be from the outer boundaries of the Section.

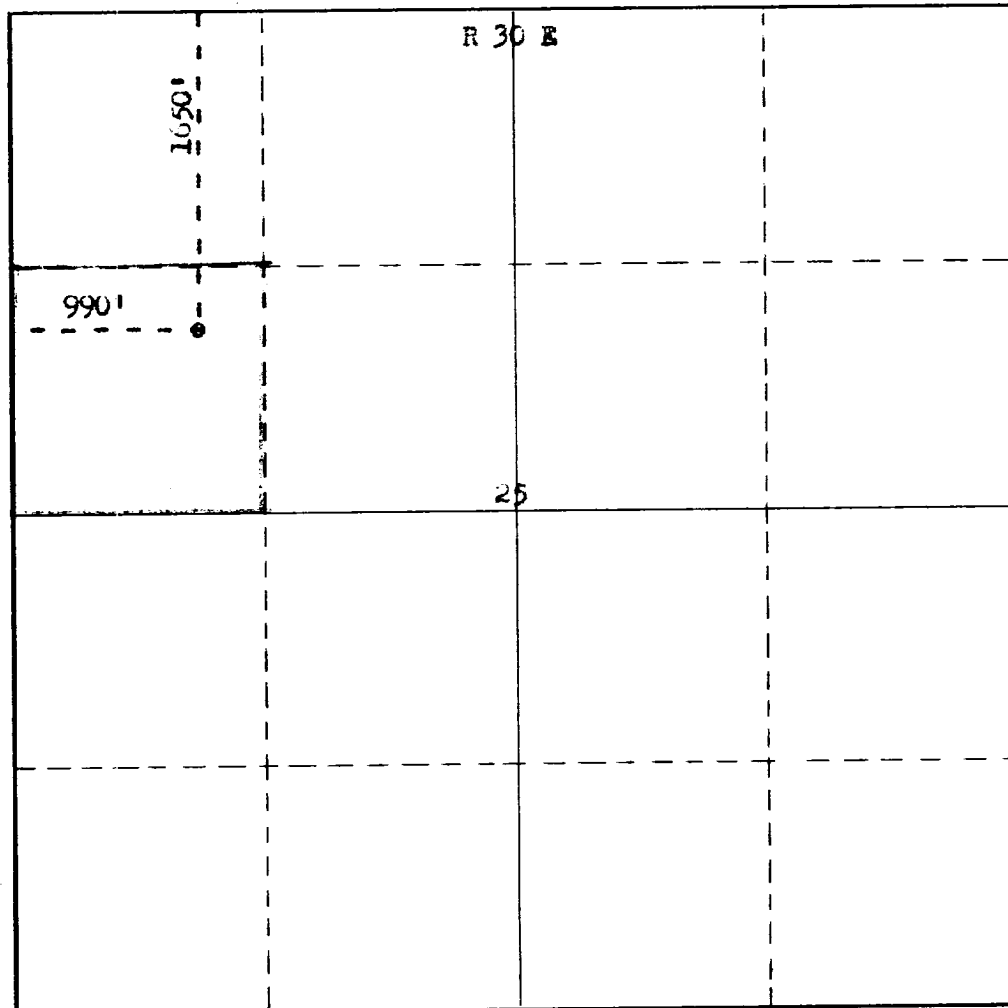
Operator Yates Petroleum Corporation			Lease Creek AL		Well No. 9
Unit Letter E	Section 25	Township 18 South	Range 30 East	County Eddy	
Actual Footage Location of Well: 1650 feet from the North line and 990 feet from the West line					
Ground Level Elev. 3480	Producing Formation Queen		Pool Snugart		Dedicated Acreage: 40 Acres

1. Outline the acreage dedicated to the subject well by colored pencil or hachure marks on the plat below.
2. If more than one lease is dedicated to the well, outline each and identify the ownership thereof (both as to working interest and royalty).
3. If more than one lease of different ownership is dedicated to the well, have the interests of all owners been consolidated by communitization, unitization, force-pooling, etc?

☐ Yes ☐ No If answer is "yes," type of consolidation _____

If answer is "no," list the owners and tract descriptions which have actually been consolidated. (Use reverse side of this form if necessary.) _____

No allowable will be assigned to the well until all interests have been consolidated (by communitization, unitization, forced-pooling, or otherwise) or until a non-standard unit, eliminating such interests, has been approved by the Commission.



CERTIFICATION

I hereby certify that the information contained herein is true and complete to the best of my knowledge and belief.

Richard C. Norman
Name **Richard C. Norman**
Geologist

Position
Yates Pet. Corporation

Company
3-2-10

Date

I hereby certify that the well location shown on this plat was plotted from field notes of actual surveys made by me or under my supervision, and that the same is true and correct to the best of my knowledge and belief.

Date Surveyed

February 25, 1970

Registered Professional Engineer and/or Land Surveyor

James H. Brown
Certificate No. **N.M.L.S. No. 542**

0 330 660 990 1320 1650 1980 2310 2640 2000 1500 1000 500