

**MEXICO OIL CONSERVATION COMMISSION
WELL LOCATION AND ACREAGE DEDICATION PLAT**

Form C-102
Supersedes C-124
Effective 1-1-65

All distances must be from the outer boundaries of the Section.

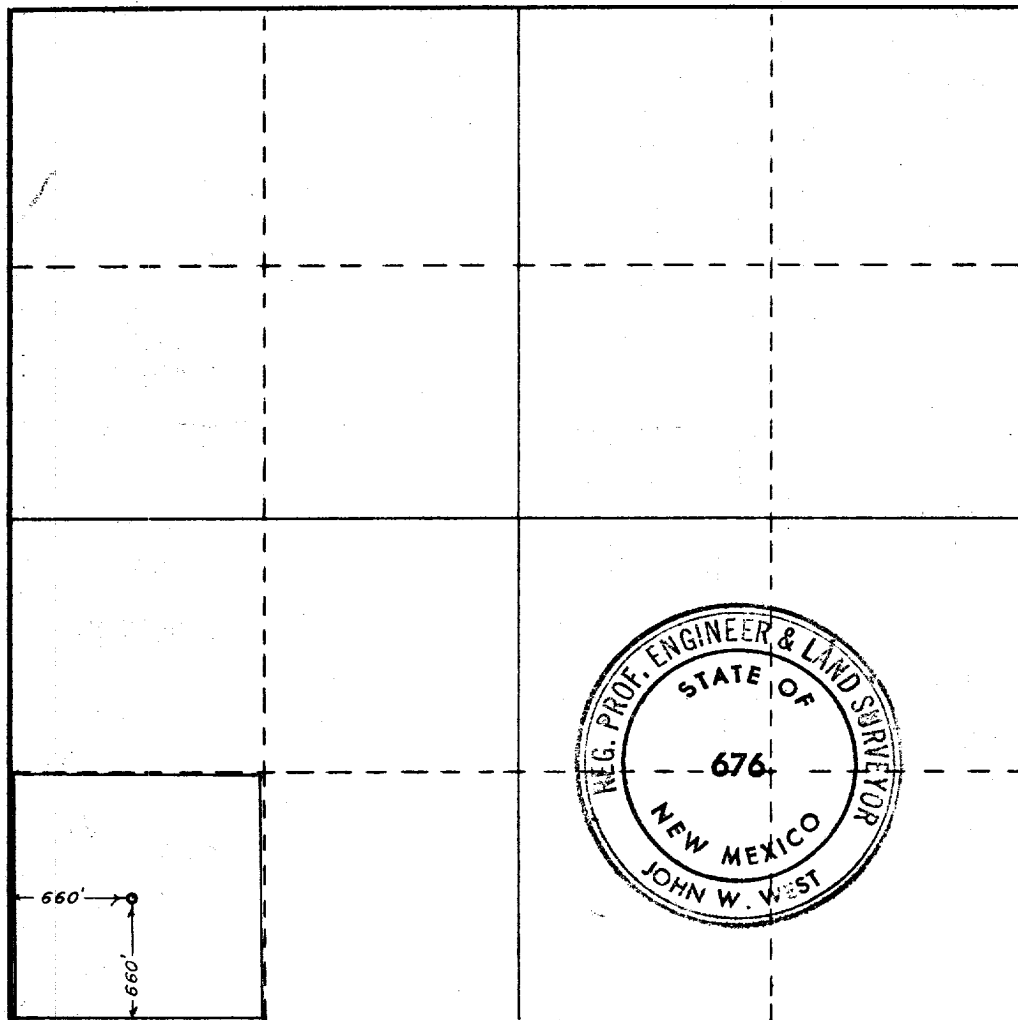
Operator MIDWEST OIL CORP			Lease Federal "J"		Well No. 1
Unit Letter M	Section 21	Township 18 South	Range 24 East	County Eddy	
Actual Footage Location of Well: 660 feet from the south line and 660 feet from the west line					
Ground Level Elev. 3801.4	Producing Formation Niagarensian	Pool Wildcat	Dedicated Acreage: 0.10-00 Acres		

1. Outline the acreage dedicated to the subject well by colored pencil or hachure marks on the plat below.
2. If more than one lease is dedicated to the well, outline each and identify the ownership thereof (both as to working interest and royalty).
3. If more than one lease of different ownership is dedicated to the well, have the interests of all owners been consolidated by communitization, unitization, force-pooling, etc?

☐ Yes ☐ No If answer is "yes," type of consolidation _____

If answer is "no," list the owners and tract descriptions which have actually been consolidated. (Use reverse side of this form if necessary.) _____

No allowable will be assigned to the well until all interests have been consolidated (by communitization, unitization, forced-pooling, or otherwise) or until a non-standard unit, eliminating such interests, has been approved by the Commission.



CERTIFICATION

I hereby certify that the information contained herein is true and complete to the best of my knowledge and belief.

Name **Carolyn Turner**

Position **Production Clerk**

Company **Midwest Oil Corporation**

Date **9-01-70**

I hereby certify that the well location shown on this plat is the same as the field notes of actual surveys made by me or under my supervision, and the same is true and correct to the best of my knowledge and belief.

**RECEIVED
SEP 14 1970
U.S. GEOLOGICAL SURVEY
ARTESIA, NEW MEXICO**

Date Surveyed
Aug. 27, 1970

Registered Professional Engineer and/or Land Surveyor

John W. West
Certificate No. **676**

