

UNITED STATES
DEPARTMENT OF THE INTERIOR
GEOLOGICAL SURVEY

APPLICATION FOR PERMIT TO DRILL, DEEPEN, OR PLUG BACK

1a. TYPE OF WORK

DRILL ☒DEEPEN ☐PLUG BACK ☐

b. TYPE OF WELL

OIL WELL ☒ GAS WELL ☐ OTHER ☐ SINGLE ZONE ☒ MULTIPLE ZONE ☐

2. NAME OF OPERATOR

The Eastland Oil Company

3. ADDRESS OF OPERATOR

704 Western United Life Building, Midland, TX 79701

4. LOCATION OF WELL (Report location clearly and in accordance with any State requirements.)*

At surface

660' From North Line, 1980' From West Line

At proposed prod. zone

Same

14. DISTANCE IN MILES AND DIRECTION FROM NEAREST TOWN OR POST OFFICE*

9 Miles Southeast of Loco Hills, New Mexico

15. DISTANCE FROM PROPOSED*

LOCATION TO NEAREST
PROPERTY OR LEASE LINE, FT.
(Also to nearest drlg. unit line, if any)

660 feet

18. DISTANCE FROM PROPOSED LOCATION*

TO NEAREST WELL, DRILLING, COMPLETED,
OR APPLIED FOR, ON THIS LEASE, FT.

First well

16. NO. OF ACRES IN LEASE

307

19. PROPOSED DEPTH

4,000'

17. NO. OF ACRES ASSIGNED
TO THIS WELL

40

20. ROTARY OR CABLE TOOLS

Rotary

21. ELEVATIONS (Show whether DF, RT, GR, etc.)

3609' GR.

22. APPROX. DATE WORK WILL START*

11/27/70

23.

PROPOSED CASING AND CEMENTING PROGRAM

SIZE OF HOLE	SIZE OF CASING	WEIGHT PER FOOT	SETTING DEPTH	QUANTITY OF CEMENT
11"	8-5/8"	20#	700'	350 Sacks Class C
7-7/8"	6-1/2"	9.5#	4,000'	250 Sacks Incon-Pozmix

API 3M-8-ND blowout preventer.

RECEIVED

O. C. C.
ARTESIA, OFFICERECEIVED
NOV 24 1970
U. S. GEOLOGICAL SURVEY
ARTESIA, NEW MEXICO

IN ABOVE SPACE DESCRIBE PROPOSED PROGRAM: If proposal is to deepen or plug back, give data on present productive zone and proposed new productive zone. If proposal is to drill or deepen directionally, give pertinent data on subsurface locations and measured and true vertical depths. Give blowout preventer program, if any.

24.

SIGNED

Gunn D. Neal

TITLE

Vice President

DATE

11/23/70

(This space for Federal or State office use)

PERMIT NO.

APPROVAL DATE

APPROVED
NOV 23 1970
R. L. BECKMA
ACTING DISTRICTTHIS APPROVAL IS RE-INDENTED IF OPERATIONS
ARE NOT COMMENCED WITHIN 3 MONTHS.
EXPIRES FEB 27 1971

DATE

Instructions

General: This form is designed for submitting proposals to perform certain well operations, as indicated, on all types of lands and leases for appropriate action by either a Federal or a State agency, or both, pursuant to applicable Federal and/or State laws and regulations. Any necessary special instructions concerning the use of this form and the number of copies to be submitted, particularly with regard to local, area, or regional procedures and practices, either are shown below or will be issued by, or may be obtained from, the local Federal and/or State office.

Item 1: If the proposal is to redrill to the same reservoir at a different subsurface location or to a new reservoir, use this form with appropriate notations. Consult applicable State or Federal regulations concerning subsequent work proposals or reports on the well.

Item 4: If there are no applicable State requirements, locations on Federal or Indian land should be described in accordance with Federal requirements. Consult local State or Federal office for specific instructions.

Item 14: Needed only when location of well cannot readily be found by road from the land or lease description. A plat, or plats, separate or on this reverse side, showing the roads to, and the surveyed location of, the well, and any other required information, should be furnished when required by Federal or State agency offices.

Items 15 and 18: If well is to be, or has been directionally drilled, give distances for subsurface location of hole in any present or objective production zone.

Item 22: Consult applicable Federal or State regulations, or appropriate officials, concerning approval of the proposal before operations are started.

APPROVED
JUL 15 1963

N MEXICO OIL CONSERVATION COMMISS
WELL LOCATION AND ACREAGE DEDICATION PLAT

Form C-102
 Supersedes C-128
 Effective 1-1-65

All distances must be from the outer boundaries of the Section.

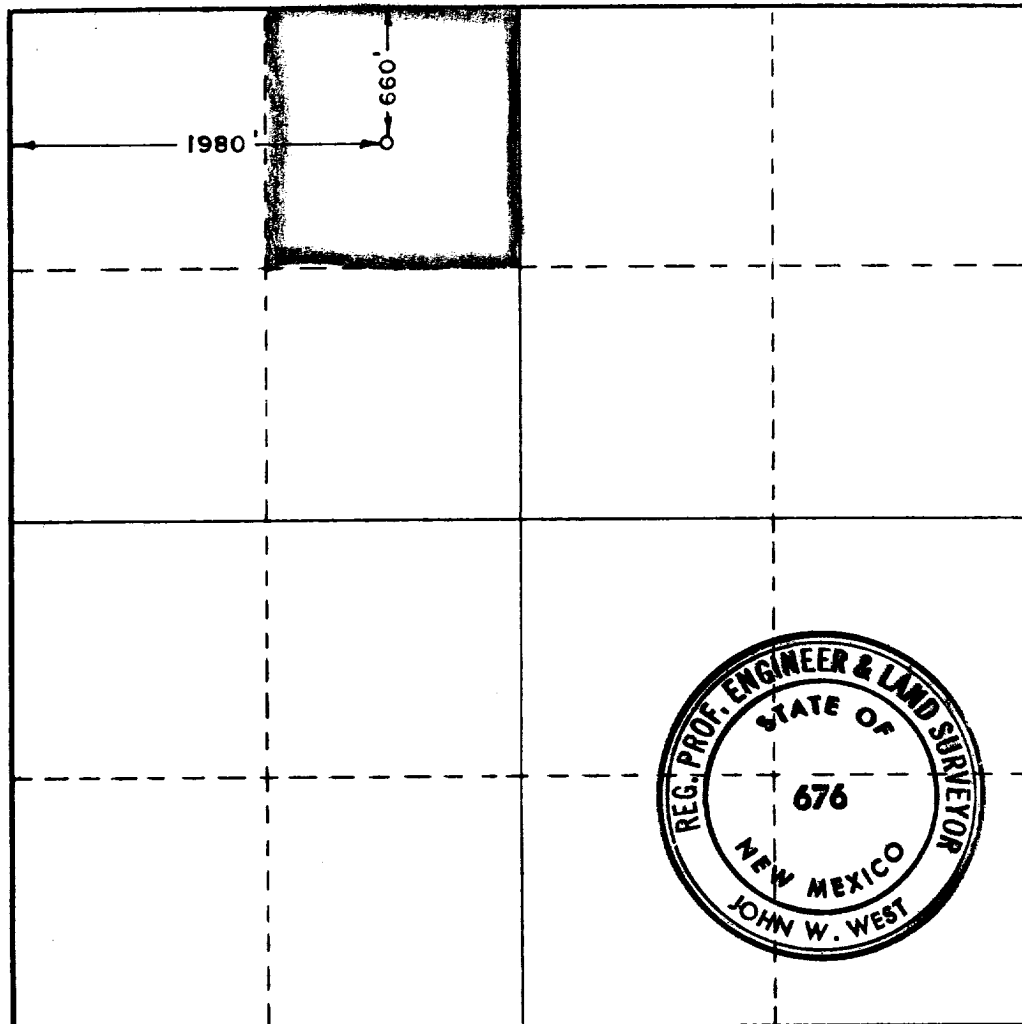
Operator THE EASTLAND OIL COMPANY			Lease KENWOOD FED.		Well No. 1
Unit Letter C	Section 6	Township 18 SOUTH	Range 31 EAST	County EDDY	
Actual Footage Location of Well: 660 feet from the NORTH line and 1980 feet from the WEST line					
Ground Level Elev. 3609	Producing Formation Grayburg	Pool Undesignated		Dedicated Acreage: 39.52 40 Acres	

1. Outline the acreage dedicated to the subject well by colored pencil or hachure marks on the plat below.
2. If more than one lease is dedicated to the well, outline each and identify the ownership thereof (both as to working interest and royalty).
3. If more than one lease of different ownership is dedicated to the well, have the interests of all owners been consolidated by communitization, unitization, force-pooling, etc?

☐ Yes ☐ No If answer is "yes," type of consolidation _____

If answer is "no," list the owners and tract descriptions which have actually been consolidated. (Use reverse side of this form if necessary.) _____

No-allowable will be assigned to the well until all interests have been consolidated (by communitization, unitization, forced-pooling, or otherwise) or until a non-standard unit, eliminating such interests, has been approved by the Commission.



CERTIFICATION

I hereby certify that the information contained herein is true and complete to the best of my knowledge and belief.

George D. Neal
 Name _____

George D. Neal

Position

Vice President

Company

The Eastland Oil Company

Date

11/23/70

I hereby certify that the well location shown on this plat was plotted from field notes of actual survey made by me or under my supervision, and that the same is true and correct to the best of my knowledge and belief.

RECEIVED
NOV 24 1970
U.S. GEOLOGICAL SURVEY
ARTESIA, NEW MEXICO

Date Surveyed

Nov. 4, 1970

Registered Professional Engineer and/or Land Surveyor

John W. West
 Certificate No. **676**

