

UNITED STATES
DEPARTMENT OF THE INTERIOR
BUREAU OF LAND MANAGEMENT

APPLICATION FOR PERMIT TO DRILL, DEEPEN, OR PLUG BACK

1a. TYPE OF WORK

DRILL ☐

DEEPEN ☐

PLUG BACK ☐

b. TYPE OF WELL

OIL WELL ☐

GAS WELL ☐

Re-Entry

OTHER Injection

SINGLE ZONE ☒

MULTIPLE ZONE ☐

2. NAME OF OPERATOR

The Eastland Oil Company

3. ADDRESS OF OPERATOR

P.O. Drawer 3488, Midland, Texas 79702

4. LOCATION OF WELL (Report location clearly and in accordance with any State requirements.)

At surface

330' FNL and 1980 FWL Unit C

At proposed prod. zone

14. DISTANCE IN MILES AND DIRECTION FROM NEAREST TOWN OR POST OFFICE*

9 miles SE Loco Hills, New Mexico

15. DISTANCE FROM PROPOSED* LOCATION TO NEAREST PROPERTY OR LEASE LINE, FT. 330' from lease line (Also to nearest drlg. unit line, if any)

16. NO. OF ACRES IN LEASE

120

17. NO. OF ACRES ASSIGNED TO THIS WELL

40

18. DISTANCE FROM PROPOSED LOCATION* TO NEAREST WELL, DRILLING, COMPLETED, OR APPLIED FOR, ON THIS LEASE, FT. 1650' from well

19. PROPOSED DEPTH

3647'

20. ROTARY OR CABLE TOOLS

Workover Rig & Reverse Unit

21. ELEVATIONS (Show whether DF, RT, GR, etc.)

3703.5 - 3704' GR, 3714' DF

22. APPROX. DATE WORK WILL START*

April 6, 1987

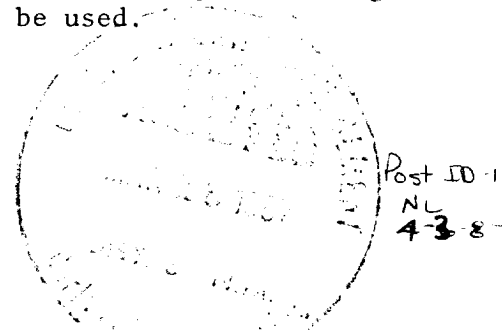
PROPOSED CASING AND CEMENTING PROGRAM

SIZE OF HOLE	SIZE OF CASING	WEIGHT PER FOOT	SETTING DEPTH	QUANTITY OF CEMENT
11"	8-5/8"	20#	694'	350 sx Class C w/2% CaCl - Circ
7-7/8"	4-1/2"	11.6#	3647'	1090 Sx lite, 350 Sx 50-50 POZ to circ

The Eastland Oil Company, originally drilled this well to 3647' as Arco Federal #3 and plugged as non-productive 2-28-1971, we propose to re-enter and use as injection well in our previously approved Power Grayburg Unit for waterflood. Using workover unit and reverse rig to drill cement plugs, and run 4-1/2" 11.6# csg with enough cement to circulate to surface. Blowout preventer will be used.

Attachments:

1. Surface use and operations plan
2. Well location and acreage dedication plat
3. Workover procedure and drilling data



IN ABOVE SPACE DESCRIBE PROPOSED PROGRAM: If proposal is to deepen or plug back, give data on present productive zone and proposed new productive zone. If proposal is to drill or deepen directionally, give pertinent data on subsurface locations and measured and true vertical depths. Give blowout preventer program, if any.

24.

SIGNED

Travis Reed

TITLE Production Superintendent

DATE 3-12-87

(This space for Federal or State office use)

PERMIT NO.

APPROVAL DATE

APPROVED BY

TITLE

DATE

CONDITIONS OF APPROVAL, IF ANY:

Subject to
Like Approval
by State

*See Instructions On Reverse Side

NE EXICO OIL CONSERVATION COMMISSION
WELL LOCATION AND ACREAGE DEDICATION PLAT

Form C-102
Supersedes C-128
Effective 1-1-65

All distances must be from the outer boundaries of the Section.

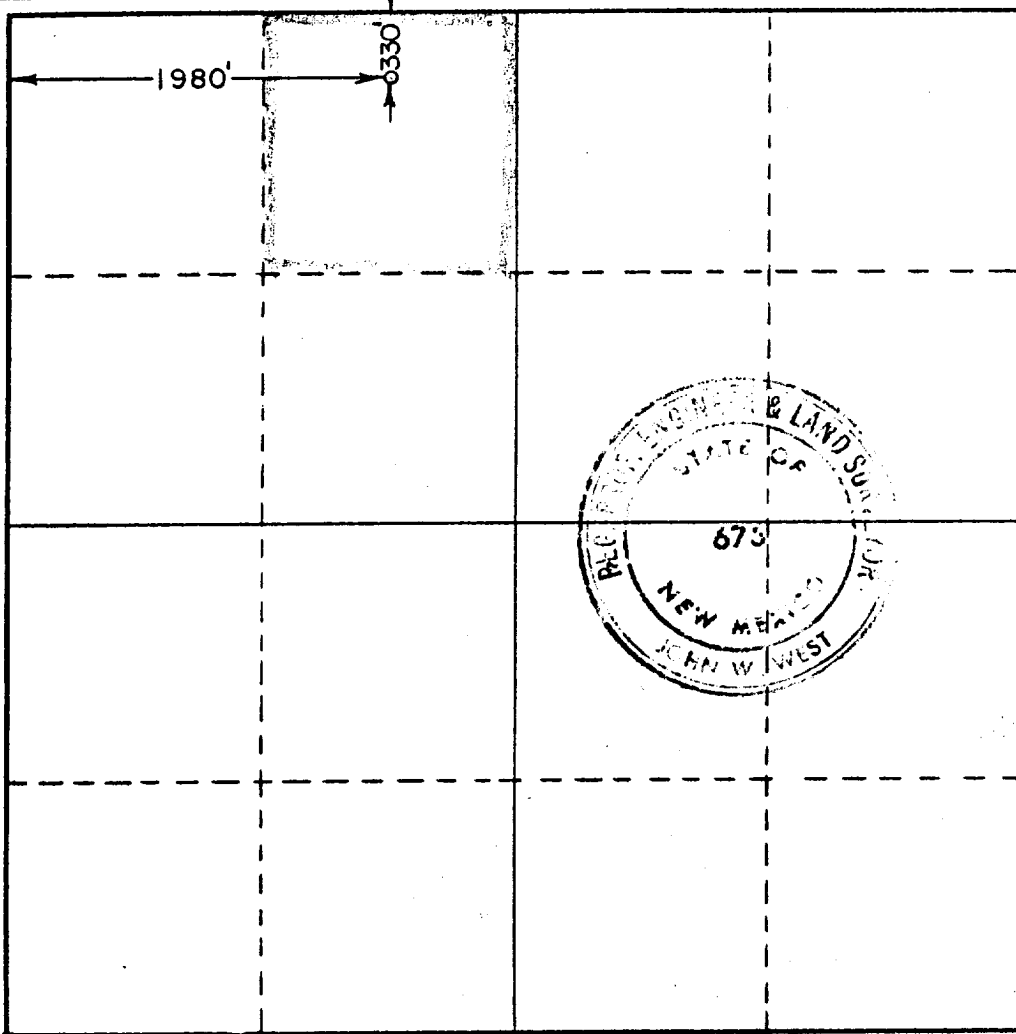
Operator THE EASTLAND OIL CO.			Lease Power Grayburg Ut. TR 1 A ARCO FEDERAL		Well No. 3
Unit Letter C	Section 5	Township 18 SOUTH	Range 31 EAST	County EDDY	
Actual Footage Location of Well: 330 feet from the NORTH line and 1980 feet from the WEST line					
Ground Level Elev. 3703.5	Producing Formation Grayburg San Andres		Pool Power Grayburg - San Andres		Dedicated Acreage: 40 Acres

1. Outline the acreage dedicated to the subject well by colored pencil or hachure marks on the plat below.
2. If more than one lease is dedicated to the well, outline each and identify the ownership thereof (both as to working interest and royalty).
3. If more than one lease of different ownership is dedicated to the well, have the interests of all owners been consolidated by communitization, unitization, force-pooling, etc?

☐ Yes ☐ No If answer is "yes," type of consolidation _____

If answer is "no," list the owners and tract descriptions which have actually been consolidated. (Use reverse side of this form if necessary.) _____

No allowable will be assigned to the well until all interests have been consolidated (by communitization, unitization, forced-pooling, or otherwise) or until a non-standard unit, eliminating such interests, has been approved by the Commission.



CERTIFICATION

I hereby certify that the information contained herein is true and complete to the best of my knowledge and belief.

George D. Neal
Name
George D. Neal

Position
Vice President

Company
The Eastland Oil Company

Date
February 5, 1971

I hereby certify that the well location shown on this plat was plotted from field notes of actual surveys made by me or under my supervision, and that the same is true and correct to the best of my knowledge and belief.

Date Surveyed

JANUARY 29, 1971

Registered Professional Engineer and/or Land Surveyor

John W. West

Certificate No.

676



THE EASTLAND OIL COMPANY

P.O. DRAWER 3488
560 ONE MARIENFELD PLACE
MIDLAND, TEXAS 79702
TELEPHONE: (915) 683-6293

Re-Entry Plan

The Eastland Oil Company
Power Grayburg Unit TR 1a #3
330' FNL & 1980' FWL
Sec. 5, T-18-S, R-31-E
Eddy County, New Mexico

- 1) Move in, rig up workover unit
- 2) Nipple up B.O.P. on 8-5/8" casing head
- 3) Rig up reverse unit and drilling head
- 4) Pick 7-7/8" bit and drill collars
- 5) Drill 10 sx cement, plug to 30' in 8-5/8" csg
- 6) Pick up 2-7/8" tubing and run bit to plug @ 646', test csg., well head, and B.O.P. to 800'
- 7) Drill plug from 646' to 758', pick up tubing to 1598' and drill plug to 1710'
- 8) Pick up tubing to 2693' and drill plug to 2805'
- 9) Pick up tubing to 3298' and drill plug to 3410'
- 10) Pick up tubing to 3647' TD, circulate and condition hole
- 11) Lay down tubing, drill collars, and bit, prepare to run casing
- 12) Run 4-1/2" - 11.6# casing with Gridshoe and float collar to 3610'+
- 13) Cement with 1090 sx lite, 350 sx 50-50 POZ to circulate
- 14) Test 4-1/2" csg, circulate hole with KCL and spot 150 gal 15% acid
- 15) Run gamma ray correlation and collar log and perforate with 1 shot per foot (3542' - 3536' - 7 holes) (3504' - 3500' - 5 holes) (3486' - 3474' - 13 holes)
- 16) Treat down casing with 30,000 gals gelled water, and 66,000 lbs sand
- 17) Run 2-3/8" plastic coated tubing and packer, circulate hole with packer fluid and set packer @ 3450'



THE EASTLAND OIL COMPANY

P.O. DRAWER 3488
560 ONE MARIENFELD PLACE
MIDLAND, TEXAS 79702
TELEPHONE: (915) 683-6293

Re-Entry
Power Grayburg Unit, TR 1a #3
330' FNL & 1980' FWL
Sec. 5, T-18-S, R-31-E
Eddy County, New Mexico

SURFACE USE AND OPERATIONS PLAN

- 1) Existing Roads: U.S.G.S. topographic map marked as Exhibit "A" shows existing road with exit from county road 222. A lease road extends from the highway and goes to the location.
- 2) Planned Access Roads: No additional roads are needed.
- 3) Location of Existing Wells: All wells within area are in a west line of location.
- 4) Facilities and Service Lines: A 2" high pressure injection line will be layed and covered along side of road from well to water injection station.
- 5) Location and Type of Water Supply: Water needed for re-entry will be trucked in locally.
- 6) Source of Construction Material: Location will need approx. 12 yards material to fill in wash on S.W. corner of location, of which can be obtained from approved existing pit in Sec. 5, in SE/4-NE/4.
- 7) Method of Handling Waste Disposal: Waste material including cuttings, and fluids will be contained in pit.
- 8) Ancillary Facilities: None anticipated.
- 9) Well Site Layout: Exhibit "B".
- 10) Plans for Restoration of Surface: All waste will be covered and pit leveled as soon as it dries.

Other Information:

- 11) The surface ownership is Federal and the only surface use is livestock grazing. There is no water source in the area and the general terrain is rolling sand dunes.

12) Leasees or Operators Representatives:

Jon Smith
Production Foreman
Box 126
Loco Hills, New Mexico 88255
Caprock Radio Unit 7126
Home Phone - 505/677-2466

Travis Reed
P.O. Drawer 3488
Midland, Texas 79702
Work Phone - 915/683-6293
Home Phone - 915/366-9612

13) Certification:

I hereby certify that I, or persons under my direct supervision, have inspected the proposed re-entry site and access route; that I am familiar with the conditions which presently exist; that the statements made in this plan are, to the best of my knowledge, true and correct; and that the work associated with the operations proposed herein will be performed by The Eastland Oil Company and its Contractors in the conformity with this plan and the terms and conditions under which it is approved.

March 12, 1987

Travis Reed
Production Superintendent
The Eastland Oil Company

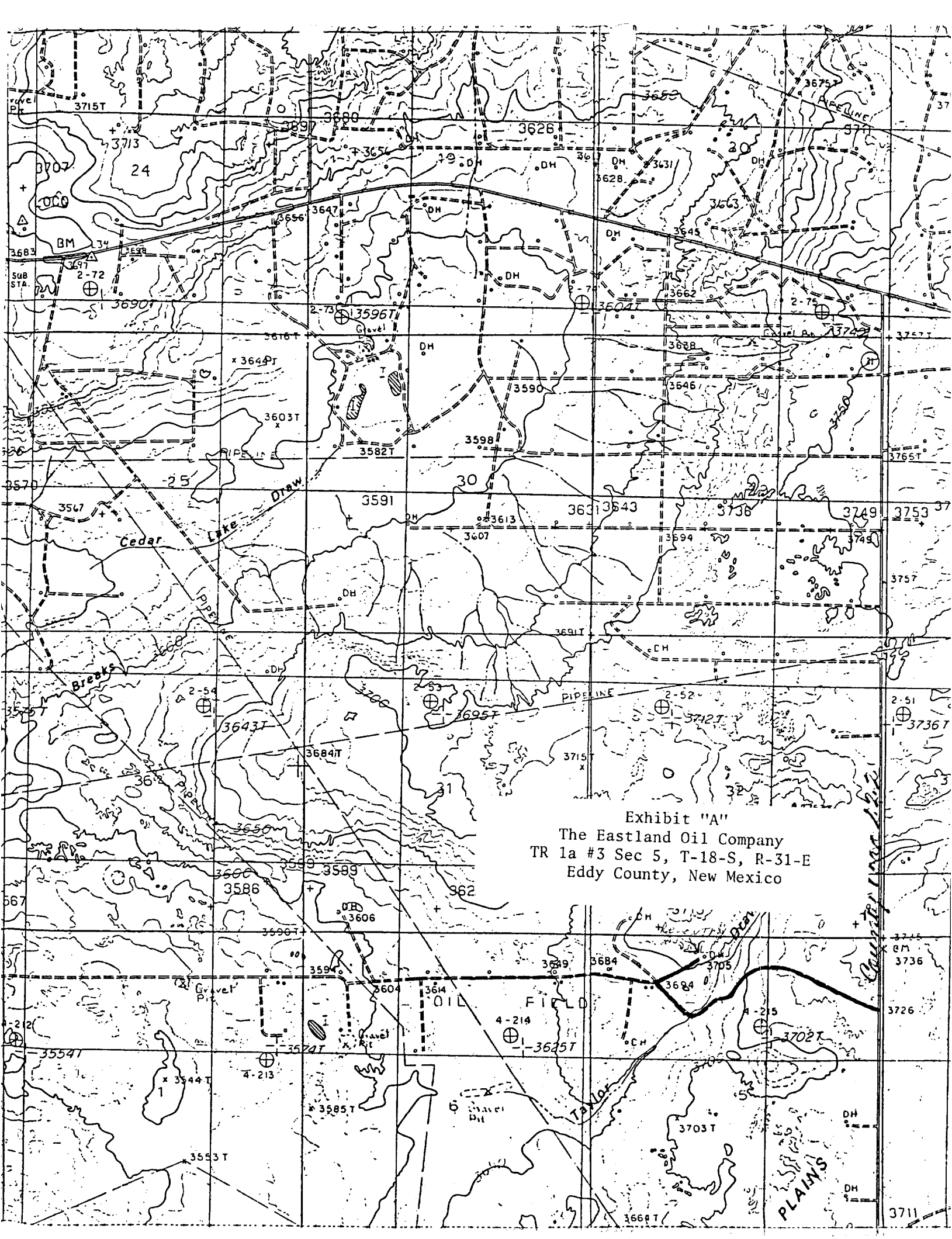


Exhibit "A"
The Eastland Oil Company
TR 1a #3 Sec 5, T-18-S, R-31-E
Eddy County, New Mexico

THE EASTLAND OIL COMPANY
ARCO - Federal, Well No. 3
330' From North Line, 1980' From West Line
Section 5, T-18-S, R-31-E
Eddy County, New Mexico

February 15, 1971 Moving in rig.

February 16, 1971 Drilling @ 361', redrock. (Moved in Tom Donnelly Drilling Co. rig, rigged up, spudded @ 7:00 p.m.)

February 17, 1971 TD 697', running 8-5/8" casing.

February 18, 1971 Drilling @ 1,450', salt. (Ran 17 joints 20#, 8-5/8" casing, 682' set @ 694'. Cemented with 350 sacks Class C 2% CaCl₂. Circulated out 75 sacks cement. P.O.B. @ 8:45 a.m. Nipped up, tested casing - 800#, 30 minutes - OK.)

February 19, 1971 Making trip @ 1,980' only. Deviation @ 1,980' - 1 1/4°.

February 20, 1971 Drilling @ 2,367', anhydrite.

February 21, 1971 Drilling @ 2,620', sand.

February 22, 1971 Drilling @ 2,848', anhydrite. Deviation @ 2,663' - 3/4°.

February 23, 1971 Drilling @ 3,014', dolomite. Deviation @ 2,900' - 1°.

February 24, 1971 Drilling @ 3,204', dolomite. Deviation @ 2,900' - 1°.

February 25, 1971 Drilling @ 3,364', dolomite. Viscosity - 34, mud weight - 10#.

February 26, 1971 Drilling @ 3,484', dolomite. Deviation @ 3,427' - 1 1/4°. Viscosity - 34, mud weight - 9.8#.

February 27, 1971 Drilling @ 3,617', lime.

February 28, 1971 TD 3,647', running logs. (Completed hole @ 4:00 p.m.)

March 1, 1971 TD 3,647', Plugged & Abandoned. (Finished running logs, ran drill pipe open ended, set cement plugs as follows:
 3,410' - 3,298' w/40 sacks.
 2,805' - 2,693' w/40 sacks.
 1,710' - 1,598' w/40 sacks.
 758' - 646' w/40 sacks.
 30' - surface w/40 sacks.
P&A @ 5:00 p.m. 2/28/71.)

DONNELLY DRILLING CO., Inc.

OIL WELL DRILLING CONTRACTORS

P. O. BOX 433

ARTESIA, NEW MEXICO

March 1, 1971

The Eastland Oil Company
704 Western United Life Building
Midland, Texas 79701

Well No. 3 ARCO-Federal Lease, 330' FNL, 1980' FWL, Section 6, Township 18
South, Range 31 East, Eddy County, New Mexico.

Deviation Record

<u>Test No.</u>	<u>Depth</u>	<u>Degree Off</u>
1	690'	1/2
2	1144'	1/4
3	1479'	3/4
4	1980'	1 1/4
5	2412'	1
6	2663'	3/4
7	2900'	1
8	3422'	1 1/4
9	3647'	1 1/4

The undersigned hereby certifies that he is an authorized representative of the drilling contractor, Donnelly Drilling Co., Inc. who drilled the above described well and that he conducted deviation tests and obtained the results set out above.

DONNELLY DRILLING CO., INC.

By

T. H. Donnelly
T. H. Donnelly, President

State of New Mexico
County of Eddy:

Subscribed and sworn to before me this 1st day of March 1971.

Georgia H. Baker
Notary Public

My Commission Expires:

8-26-74