

UNITED STATES  
DEPARTMENT OF THE INTERIOR  
GEOLOGICAL SURVEY

SUBMIT IN TRIPLICATE  
(Other instructions on  
reverse side)

Form approved.  
Budget Bureau No. 42-R1425.

30-015-20484

APPLICATION FOR PERMIT TO DRILL, DEEPEN, OR PLUG BACK

1a. TYPE OF WORK

DRILL ☒

DEEPEN ☐

PLUG BACK ☐

b. TYPE OF WELL

OIL  
WELL ☒

GAS  
WELL ☐

OTHER

SINGLE  
ZONE ☒

MULTIPLE  
ZONE ☐

2. NAME OF OPERATOR

The Eastland Oil Company

3. ADDRESS OF OPERATOR

704 Western United Life Building, Midland, Texas 79701

4. LOCATION OF WELL (Report location clearly and in accordance with any State requirements.)\*

At surface

1630' from North line and 330' from East line

At proposed prod. zone

same

14. DISTANCE IN MILES AND DIRECTION FROM NEAREST TOWN OR POST OFFICE\*

10 mile SE Loco Hills, New Mexico

15. DISTANCE FROM PROPOSED\* LOCATION TO NEAREST PROPERTY OR LEASE LINE, FT. (Also to nearest drlg. unit line, if any)

330' from lease line  
330' from unit line

16. NO. OF ACRES IN LEASE

441

17. NO. OF ACRES ASSIGNED TO THIS WELL

40

18. DISTANCE FROM PROPOSED LOCATION\* TO NEAREST WELL, DRILLING, COMPLETED, OR APPLIED FOR, ON THIS LEASE, FT.

990'

19. PROPOSED DEPTH

3700'

20. ROTARY OR CABLE TOOLS

Rotary

21. ELEVATIONS (Show whether DF, RT, GR, etc.)

3580' GR

22. APPROX. DATE WORK WILL START\*

August 15, 1971

23.

PROPOSED CASING AND CEMENTING PROGRAM

SIZE OF HOLE	SIZE OF CASING	WEIGHT PER FOOT	SETTING DEPTH	QUANTITY OF CEMENT
11"	8-5/8"	20 #	660'	350 sz reg. 2% CaCl <sub>2</sub>
7-7/8"	4-1/2"	9.5#	3700'	250 sz Inscr-Pez. 2% gal.

API 24-6-Rd blowout preventor.

RECEIVED

AUG 13 1971

O. C. C.  
ARTESIA, OFFICE

RECEIVED

AUG 11 1971

U. S. GEOLOGICAL SURVEY  
ARTESIA, NEW MEXICO

IN ABOVE SPACE DESCRIBE PROPOSED PROGRAM: If proposal is to deepen or plug back, give data on present productive zone and proposed new productive zone. If proposal is to drill or deepen directionally, give pertinent data on subsurface locations and measured and true vertical depths. Give blowout preventer program, if any.

24.

SIGNED

TITLE

Vice President

DATE

August 10, 1971

(This space for Federal or State office use)

PERMIT NO.

APPROVAL DATE

AUG 11 1971

APPROVED BY

TITLE

DISTRICT ENGINEER

DATE

AUG 11 1971

CONDITIONS OF APPROVAL, IF ANY:

## Instructions

**General:** This form is designed for submitting proposals to perform certain well operations, as indicated, on all types of lands and leases for appropriate action by either a Federal or a State agency, or both, according to applicable Federal and/or State laws and regulations. Any necessary special instructions concerning the use of this form and the number of copies to be submitted, particularly with regard to local, area, or regional procedures and practices, either are shown below or will be issued by, or may be obtained from, the local Federal and/or State office.

**Item 1:** If the proposal is to redrill to the same reservoir at a different subsurface location or to a new reservoir, use this form with appropriate notations. Consult applicable State or Federal regulations concerning subsequent work proposals or reports on the well.

**Item 4:** If there are no applicable State requirements, locations on Federal or Indian land should be described in accordance with Federal requirements. Consult local State or Federal office for specific instructions.

**Item 14:** Needed only when location of well cannot readily be found by road from the land or lease description. A plat, or plats, separate or on this reverse side, showing the roads to, and the surveyed location of, the well, and any other required information, should be furnished when required by Federal or State agency offices.

**Items 15 and 18:** If well is to be, or has been directionally drilled, give distances for subsurface location of hole in any present or objective production zone.

**Item 22:** Consult applicable Federal or State regulations, or appropriate officials, concerning approval of the proposal before operations are started.

NEW MEXICO OIL CONSERVATION COMMISSIC.  
WELL LOCATION AND ACREAGE DEDICATION PLAT

Form C-102  
Supersedes C-128  
Effective 1-1-65

All distances must be from the outer boundaries of the Section

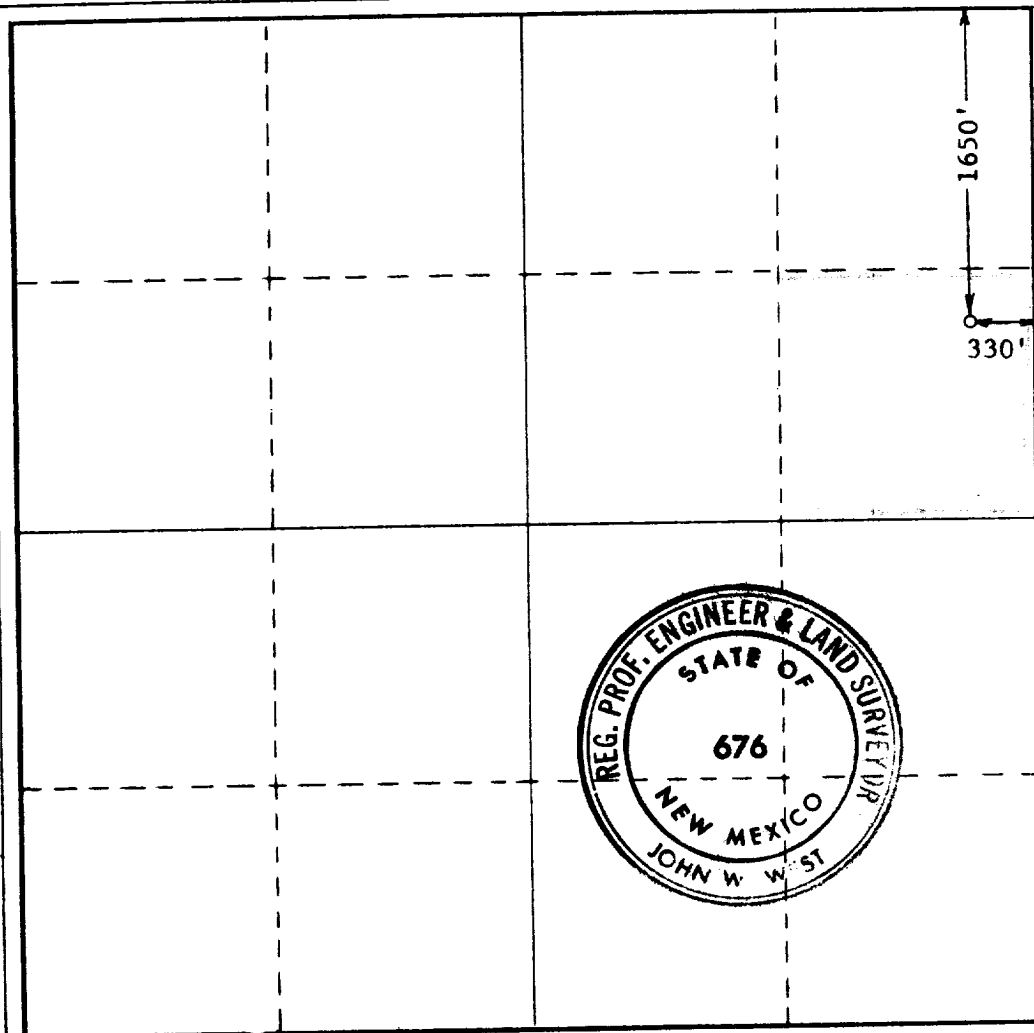
Operator <b>THE EASTLAND OIL CO.</b>			Lease <b>SIBYL FED.</b>		Well No. <b>2</b>
Unit Letter <b>H</b>	Section <b>1</b>	Township <b>18 SOUTH</b>	Range <b>30 EAST</b>	County <b>EDDY</b>	
Actual Footage Location of Well: <b>1650</b> feet from the <b>NORTH</b> line and <b>330</b> feet from the <b>EAST</b> line					
Ground Level Elev. <b>3580.45</b>	Producing Formation <b>Grayburg-San Andres</b>		Pool <b>Power Sh. SA Undesignated</b>	Dedicated Acreage: <b>40</b> Acres	

1. Outline the acreage dedicated to the subject well by colored pencil or hachure marks on the plat below.
2. If more than one lease is dedicated to the well, outline each and identify the ownership thereof (both as to working interest and royalty).
3. If more than one lease of different ownership is dedicated to the well, have the interests of all owners been consolidated by communitization, unitization, force-pooling, etc?

☐ Yes ☐ No If answer is "yes," type of consolidation \_\_\_\_\_

If answer is "no," list the owners and tract descriptions which have actually been consolidated. (Use reverse side of this form if necessary.) \_\_\_\_\_

No allowable will be assigned to the well until all interests have been consolidated (by communitization, unitization, forced-pooling, or otherwise) or until a non-standard unit, eliminating such interests, has been approved by the Commission.



CERTIFICATION

I hereby certify that the information contained herein is true and complete to the best of my knowledge and belief.

*George D. Neal*  
Name

**George D. Neal**

Position

**Vice President**

Company

**The Eastland Oil Company**

Date

**August 10, 1971**

I hereby certify that the well location shown on this plat was plotted from field notes of actual surveys made by me or under my supervision and that the same is true and correct to the best of my knowledge and belief.

**RECEIVED**  
**AUG 11 1971**  
**U.S. GEOLOGICAL SURVEY**  
**ARTESIA, NEW MEXICO**

Date Surveyed

**AUGUST 9, 1971**

Registered Professional Engineer and/or Land Surveyor

*John W. West*  
Certificate No.

**676**

0 330 660 990 1320 1650 1980 2310 2640 2970 3300 3630 3960 4290 4620 4950 5280 5610 5940 6270 6600

