

N. MEXICO OIL CONSERVATION COMMISS.
WELL LOCATION AND ACREAGE DEDICATION PLAT

Form C-102
Supersedes C-128
Effective 1-1-65

All distances must be from the outer boundaries of the Section.

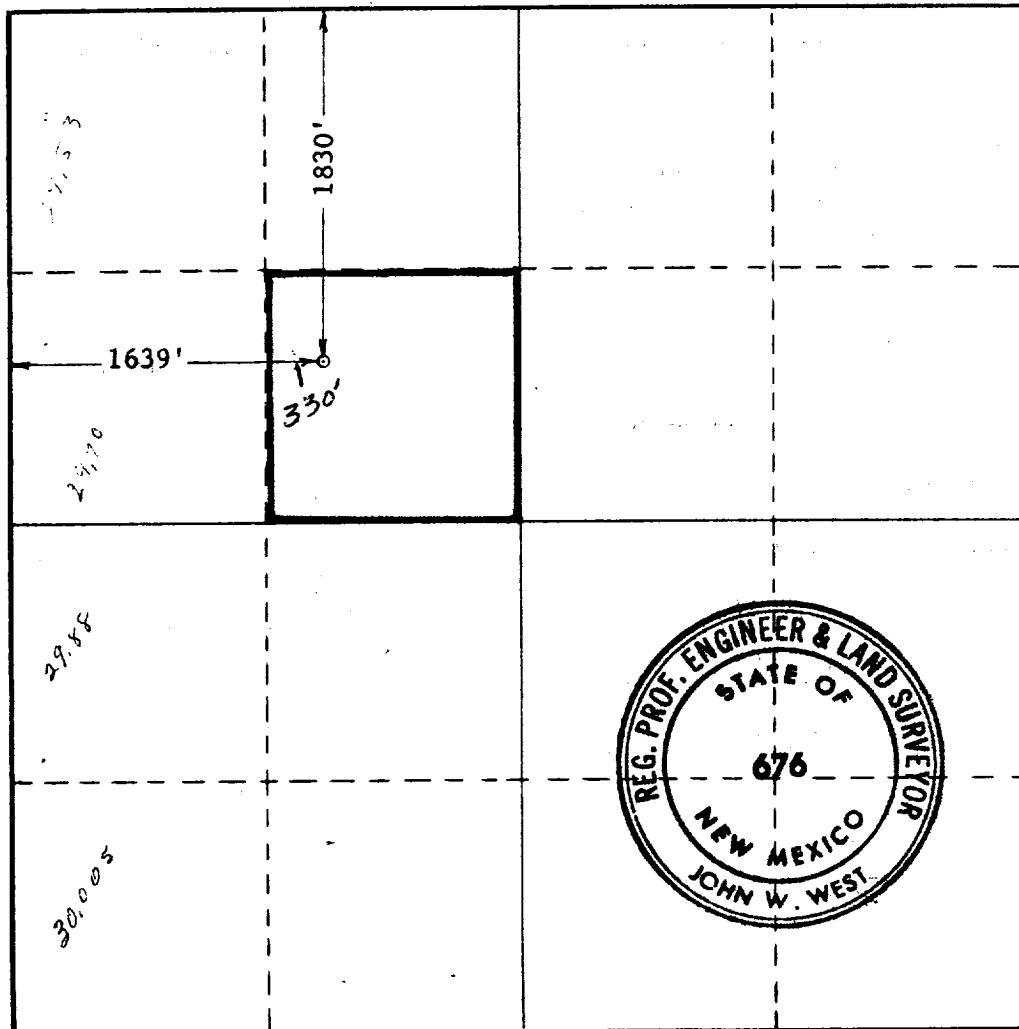
Operator MIDWEST OIL CORP.			Lease SOUTH EMPIRE DEEP UNIT		Well No. 1
Unit Letter F	Section 6	Township 18 SOUTH	Range 29 EAST	County EDDY	
Actual Footage Location of Well: 1830 feet from the NORTH line and 1639 feet from the WEST line					
Ground Level Elev. 3645.0	Producing Formation Dawson		Pool Wildcat	Dedicated Acreage: 40 Acres	

1. Outline the acreage dedicated to the subject well by colored pencil or hachure marks on the plat below.
2. If more than one lease is dedicated to the well, outline each and identify the ownership thereof (both as to working interest and royalty).
3. If more than one lease of different ownership is dedicated to the well, have the interests of all owners been consolidated by communitization, unitization, force-pooling, etc?

☐ Yes ☐ No If answer is "yes," type of consolidation _____

If answer is "no," list the owners and tract descriptions which have actually been consolidated. (Use reverse side of this form if necessary.) _____

No allowable will be assigned to the well until all interests have been consolidated (by communitization, unitization, forced-pooling, or otherwise) or until a non-standard unit, eliminating such interests, has been approved by the Commission.



CERTIFICATION

I hereby certify that the information contained herein is true and complete to the best of my knowledge and belief.

Name
D. T. Stagner
Position
Engineer
Company
Midwest Oil Corporation

Date
8-28-71

I hereby certify that the well location shown on this plat was plotted from notes of actual surveys made by me or under my supervision and that the same is true and correct to the best of my knowledge and belief.
RECEIVED
AUG 28 1971
U.S. GEOLOGICAL SURVEY
ARTESIA, NEW MEXICO

Date Surveyed
AUGUST 17, 1971

Registered Professional Engineer and/or Land Surveyor

John W. West
Certificate No. **676**

