



IN REPLY REFER TO:

UNITED STATES
DEPARTMENT OF THE INTERIOR
GEOLOGICAL SURVEY
P. O. Drawer 1857
Roswell, New Mexico 88210

September 23, 1971

Hanson Oil Corporation
Post Office Box 1515
Roswell, New Mexico 88201

Gentlemen:

Your Notice of Intention to Drill well No. 5-Sinsberg Federal in the NW1/4 sec. 24, T. 12 S., R. 30 E., N.M.P.M., Eddy County, New Mexico, lease New Mexico 025503, to a depth of 4150 feet to test the Graybur. formation in the Potash Area, is hereby approved.

One copy of the Notice is returned herewith. Please notify the District Engineer, Geological Survey, Post Office Drawer U, Artesia, New Mexico, 88210, in sufficient time for a representative to witness all cementing operations.

Sincerely yours,

(ORIGINAL FILED IN)
N. O. FREDERICK
Regional Oil and Gas Supervisor

Attachment

cc:
Washington
Mining Branch (2)
NMOC-Artesia (2) (w/2 cys Notice) ✓
Artesia (w/cy Notice)
Roswell (2) (w/cy Notice)

RECEIVED

SEP 24 1971

O. E. C.
REGIONAL OFFICE

UNITED STATES
DEPARTMENT OF THE INTERIOR
GEOLOGICAL SURVEY

APPLICATION FOR PERMIT TO DRILL, DEEPEN, OR PLUG BACK

1a. TYPE OF WORK
DRILL ☒ DEEPEN ☐ PLUG BACK ☐

b. TYPE OF WELL
OIL WELL ☒ GAS WELL ☐ OTHER ☐
SINGLE ZONE ☒ MULTIPLE ZONE ☐

2. NAME OF OPERATOR
Hanson Oil Corporation

3. ADDRESS OF OPERATOR

P. O. Box 1515 - Roswell, New Mexico 88201

4. LOCATION OF WELL (Report location clearly and in accordance with any State requirements.)
At surface 1650' FSL & 1650' FEL

At proposed prod. zone Sec. 24, T-18-S, R-30-E, NMPM
Eddy County, New Mexico

14. DISTANCE IN MILES AND DIRECTION FROM NEAREST TOWN OR POST OFFICE*

6 miles south of Loco Hills, New Mexico

15. DISTANCE FROM PROPOSED*
LOCATION TO NEAREST
PROPERTY OR LEASE LINE, FT.
(Also to nearest drlg. unit line, if any) 330'

18. DISTANCE FROM PROPOSED LOCATION*
TO NEAREST WELL, DRILLING, COMPLETED,
OR APPLIED FOR, ON THIS LEASE, FT. 2310'

21. ELEVATIONS (Show whether DF, RT, GR, etc.)
3612.4 GL

23. PROPOSED CASING AND CEMENTING PROGRAM

SIZE OF HOLE	SIZE OF CASING	WEIGHT PER FOOT	SETTING DEPTH	QUANTITY OF CEMENT
12"	8-5/8"	32#	800'	150 sx.
8"	5-1/2"	15.5#	4150'	700 sx.

We propose drilling the captioned well with cable tools to a total depth of 4150 ft. in the Grayburg formation. If oil and gas in commercial quantities is encountered, the proposed casing program will be followed. The production string will be cemented with a sufficient amount of cement to cover the base of the salt. The well will be perforated and stimulated as conditions indicate.

RECEIVED

SEP 24 1971

RECEIVED
SEP 23 1971
U. S. GEOLOGICAL SURVEY
ARTESIA, NEW MEXICO

IN ABOVE SPACE DESCRIBE PROPOSED PROGRAM: If proposal is to deepen or plug back, give data on present productive zone and proposed new productive zone. If proposal is to drill or deepen directionally, give pertinent data on subsurface formations and measured and true vertical depths. Give blowout preventer program, if any.

24. SIGNED Reagan Sweet TITLE Manager DATE 9-22-71

(This space for Federal or State office use)

PERMIT NO. _____ APPROVAL DATE _____

APPROVED BY _____ TITLE _____ DATE _____
CONDITIONS OF APPROVAL, IF ANY:

NEW MEXICO OIL CONSERVATION COMMISSION
WELL LOCATION AND ACREAGE DEDICATION PLAT

Form O-107
Supersedes O-128
Effective 1-1-65

All distances must be from the outer boundaries of the Section

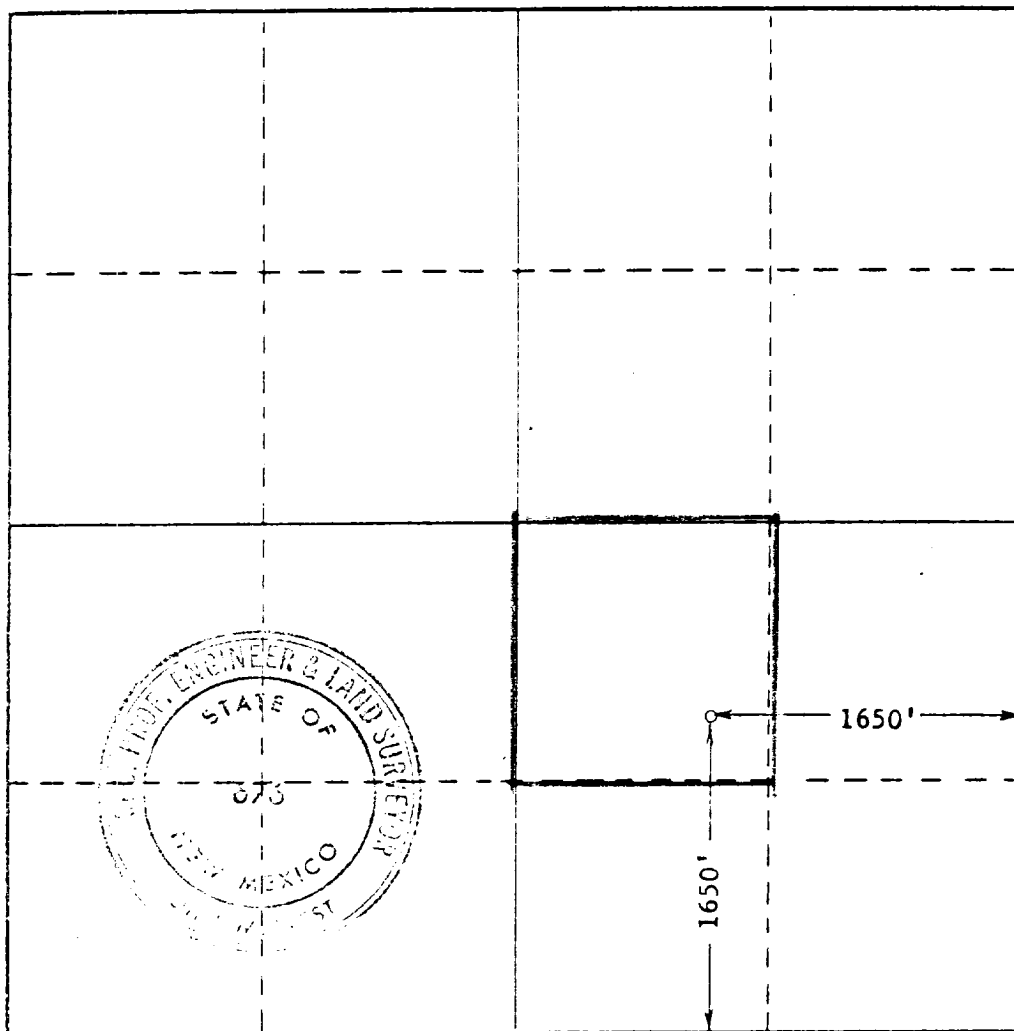
Operator HANSON OIL CORP.		Lease GINSBERG FED.		Well No. 5
Unit Letter J	Section 24	Township 18 SOUTH	Range 30 EAST	County EDDY
Actual Footage Location of Well: 1650 feet from the EAST line and 1650 feet from the SOUTH line				
Ground Level Elev. 3612.4	Producing Formation <i>Blaine</i>	Pool Shugart-Yates, 7 Rvrs., Q, Grayburg	Dedicated Acreage: 40 Acres	

1. Outline the acreage dedicated to the subject well by colored pencil or hachure marks on the plat below.
2. If more than one lease is dedicated to the well, outline each and identify the ownership thereof (both as to working interest and royalty).
3. If more than one lease of different ownership is dedicated to the well, have the interests of all owners been consolidated by communitization, unitization, force-pooling, etc?

☐ Yes ☐ No If answer is "yes," type of consolidation _____

If answer is "no," list the owners and tract descriptions which have actually been consolidated. (Use reverse side of this form if necessary.) _____

No allowable will be assigned to the well until all interests have been consolidated (by communitization, unitization, forced-pooling, or otherwise) or until a non-standard unit, eliminating such interests, has been approved by the Commission.



CERTIFICATION

I hereby certify that the information contained herein is true and complete to the best of my knowledge and belief.

Reagan Sweet
Name

Reagan Sweet

Position

Manager

Company

Hanson Oil Corporation

Date

September 22, 1971

I hereby certify that the well location shown on this plat was plotted from field notes of actual surveys made by me or under my supervision, and that the same is true and correct to the best of my knowledge and belief.

Date Surveyed

SEPTEMBER 15, 1971

Registered Professional Engineer and/or Land Surveyor

John W. West
Certificate No. 676