

UNITED STATES  
DEPARTMENT OF THE INTERIOR  
GEOLOGICAL SURVEY

30-015-20525

APPLICATION FOR PERMIT TO DRILL, ~~DEEPEN~~, OR PLUG BACK

## 1a. TYPE OF WORK

DRILL ☒DEEPEN ☐PLUG BACK ☐

## b. TYPE OF WELL

OIL  
WELL ☒GAS  
WELL ☐OTHER ☐

## 2. NAME OF OPERATOR

Yates Petroleum Corporation

## 3. ADDRESS OF OPERATOR

207 South 4th Street - Artesia, New Mexico 88210

## 4. LOCATION OF WELL (Report location clearly and in accordance with any State requirements.)\*

At surface

990' FNL &amp; 2310' FWL of Section 1-18S-24E

At proposed prod. zone

## 14. DISTANCE IN MILES AND DIRECTION FROM NEAREST TOWN OR POST OFFICE\*

Approx. 8 miles SW of Artesia, New Mexico

## 15. DISTANCE FROM PROPOSED\*

LOCATION TO NEAREST  
PROPERTY OR LEASE LINE, FT.

(Also to nearest drig. unit line, if any)

990'

## 16. NO. OF ACRES IN LEASE

## 17. NO. OF ACRES ASSIGNED

TO THIS WELL

40

## 18. DISTANCE FROM PROPOSED LOCATION\*

TO NEAREST WELL, DRILLING, COMPLETED,  
OR APPLIED FOR, ON THIS LEASE, FT.

## 19. PROPOSED DEPTH

Approx. 1900'

## 20. ROTARY OR CABLE TOOLS

Rotary

## 21. ELEVATIONS (Show whether DF, RT, GR, etc.)

3686' GL

## 22. APPROX. DATE WORK WILL START\*

Immediately

## 23.

## PROPOSED CASING AND CEMENTING PROGRAM

SIZE OF HOLE	SIZE OF CASING	WEIGHT PER FOOT	SETTING DEPTH	QUANTITY OF CEMENT
15"	10 3/4"	32#	Approx. 150'	Circulate
9 5/8"	7"	23#	1100'	Circulate
6 1/4"	4 1/2" ) Tapered 5 1/2"	9.5# 14#	1900' ( 900' ( 1000'	Circulate

It is our intention to drill a 15" hole to approx. 150' and set 10 3/4" casing, if necessary, circulate the cement, then reduce hole to 9 5/8" and set 7" surface casing to approx. 1100', circulate the cement. Reduce the hole to 6 1/4" and drill to a total depth of approx. 1900'. If production is encountered a tapered string of production casing will be set according to the rules and regulations of the USGS.

RECEIVED

OCT 27 1971

U. S. GEOLOGICAL SURVEY

IN ABOVE SPACE DESCRIBE PROPOSED PROGRAM: If proposal is to deepen or plug back, give data on present productive zone and proposed new productive zone. If proposal is to drill or deepen directionally, give pertinent data on subsurface locations and measured and true vertical depths. Give blowout preventer program, if any.

## 24.

SIGNED

*Eddie L. Beekman*

TITLE

Engineer

DATE

10-27-71

(This space for Federal or State office use)

PERMIT NO.

APPROVAL DATE

DECLARED WATER BASIN

CEMENT BEHIND THE  
CASING MUST BE CIRCULATED

APPROVED

OCT 28 1971

R. L. BEEKMAN  
ACTING DISTRICT ENGINEERTHIS APPROVAL IS REVOKED IF OPERATIONS  
ARE NOT COMMENCED WITHIN 3 MONTHS.  
EXPIRES  
JAN 28 1972

\*See Instructions On Reverse Side

NOTIFY USGS IN SUFFICIENT TIME TO  
WITNESS CEMENTING THE 9" CASING.

NEW MEXICO OIL CONSERVATION COMMISSION  
WELL LOCATION AND ACREAGE DEDICATION PLAT

Form C-102  
Supersedes C-128  
Effective 1-1-65

All distances must be from the outer boundaries of the Section.

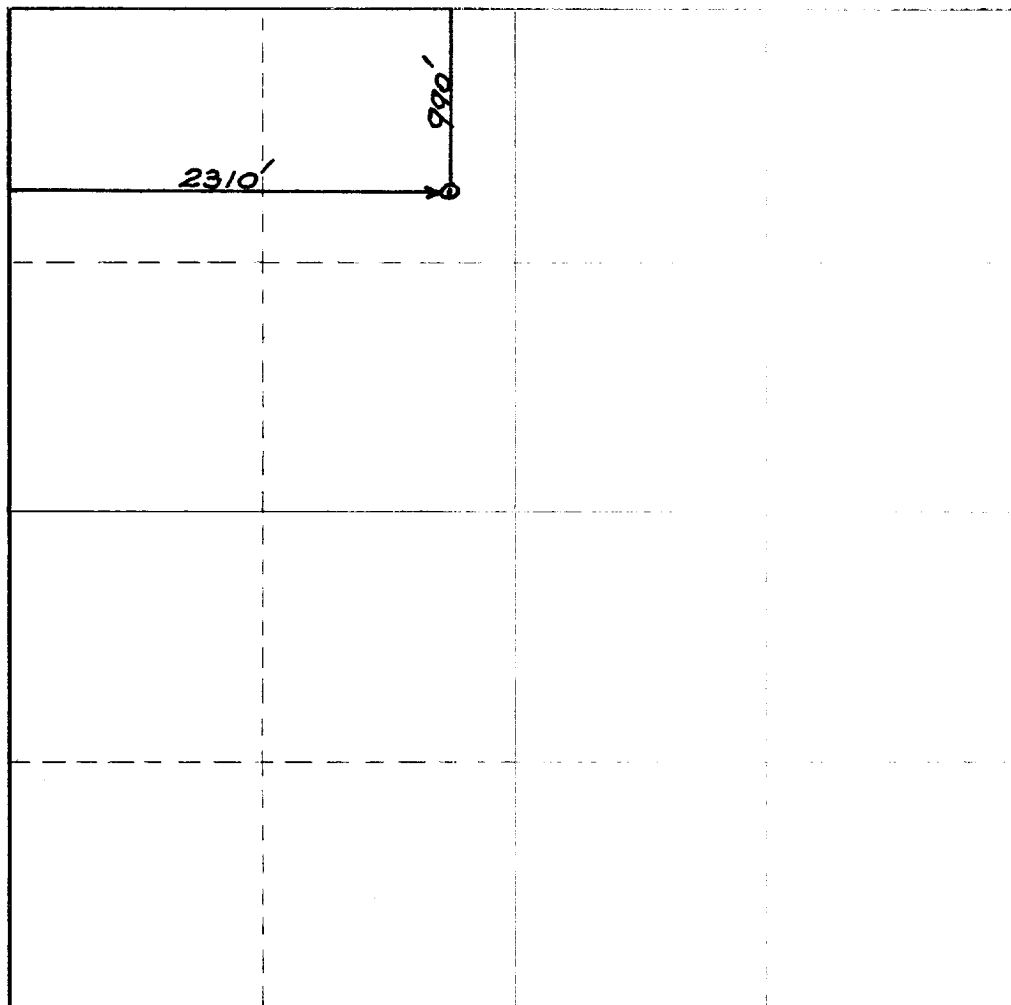
Operator <b>Yates Petroleum Corporation</b>			Lease <b>Federal "CH"</b>		Well No. <b>1</b>
Unit Letter <b>C</b>	Section <b>1</b>	Township <b>18S.</b>	Range <b>24E.</b>	County <b>Eddy</b>	
Actual Footage Location of Well: <b>990</b> feet from the <b>North</b> line <b>2310</b> feet from the <b>West</b> line					
Ground Level Elev. <b>3686</b>	Producing Formation <b>San Andres</b>		Dedicated Acreage: <b>40.14</b> Acres		

1. Outline the acreage dedicated to the subject well by colored pencil or hatchure marks on the plat below.
2. If more than one lease is dedicated to the well, outline each and identify the ownership thereof (both as to working interest and royalty).
3. If more than one lease of different ownership is dedicated to the well, have the interests of all owners been consolidated by communitization, unitization, force-pooling, etc.

☐ Yes ☐ No If answer is "yes" type of consolidation \_\_\_\_\_

If answer is "no," list the owners and tract descriptions of interests actually been consolidated. (Use reverse side of this form if necessary.) \_\_\_\_\_

No allowable will be assigned to the well until all interests have been consolidated (by communitization, unitization, forced-pooling, or otherwise) or until a non-standstill order regarding such interests, has been approved by the Commission.



CERTIFICATION

I hereby certify that the information contained herein is true and complete to the best of my knowledge and belief.

*Eddie M. Mahfood*

Name

**Eddie M. Mahfood**

Position

**Engineer**

Company

**Yates Pet. Corporation**

Date

**10-27-71**

**RECEIVED**

I hereby certify that the location shown on this plat was plotted from field notes of **OCT 27 1971** made by me or under my supervision, and that the same is true and correct to the best of my knowledge and belief.

**October 22, 1971**

Date Surveyed

*E. S. Minton*  
Registered Professional Engineer  
and/or Land Surveyor

**N. M. #3064**  
Certificate No.

0 330 660 990 1320 1650 1980 2310 2640 2970 3300 3630 3960 4290 4620 4950 5280 5610 5940 6270 6600