



UNITED STATES
DEPARTMENT OF THE INTERIOR
GEOLOGICAL SURVEY
P. O. Drawer 1557
Roswell, New Mexico 88201

November 1, 1971

RECEIVED

Hanson Oil Corporation
Post Office Box 1515
Roswell, New Mexico 88201

NOV 3 1971

D. C. C.
ARTESIA, OFFICE

Gentlemen:

Your Notice of Intention to Drill well No. 10 Ginsberg Federal in the NE $\frac{1}{4}$ sec. 26, T. 18 S., R. 30 E., N.M.P.M., Eddy County, New Mexico, lease New Mexico 025903, to a depth of 4,150 feet to test the Grayburg formation in the Potash Area, is hereby approved.

One copy of the Notice is returned herewith. Please notify the District Engineer, Geological Survey, Post Office Drawer U, Artesia, New Mexico, 88210, in sufficient time for a representative to witness all cementing operations.

Sincerely yours,

N. O. FREDERICK
Regional Oil and Gas Supervisor

Attachment

cc:
Washington
Mining Branch (2)
BODCC-Artesia (2) (w/2 cys Notice)
Artesia (w/cy Notice)
Roswell (2) (w/cy Notice)

UNITED STATES DEPARTMENT OF JUSTICE
FEDERAL BUREAU OF INVESTIGATION
WASHINGTON, D. C. 20535



RECEIVED

NOV 4 1964

ADH

TO : DIRECTOR, FBI (100-388610)
FROM : SAC, NEW YORK (100-100000) (P)
SUBJECT: [Illegible]
RE: [Illegible]
[Illegible text follows]

[Illegible text follows]

UNITED STATES
DEPARTMENT OF THE INTERIOR
GEOLOGICAL SURVEY

30-015-20528

APPLICATION FOR PERMIT TO DRILL, DEEPEN, OR PLUG BACK

1a. TYPE OF WORK

DRILL ☒RECEIVE PLUG BACK ☐

b. TYPE OF WELL

OIL
WELL ☒GAS
WELL ☐OTHER ☐SINGLE
ZONE ☒MULTIPLE
ZONE ☐

2. NAME OF OPERATOR

Hanson Oil Corporation

3. ADDRESS OF OPERATOR

P. O. Box 1515 Roswell, New Mexico 88201

4. LOCATION OF WELL (Report location clearly and in accordance with any State requirements.)*

At surface

2310' FSL & 330' FEL

At proposed prod. zone

Sec. 26, T-18-S, R-30-E, N.M.P.M.

Eddy County, New Mexico

14. DISTANCE IN MILES AND DIRECTION FROM NEAREST TOWN OR POST OFFICE*

6 miles south of Loco Hills

15. DISTANCE FROM PROPOSED*

LOCATION TO NEAREST
PROPERTY OR LEASE LINE, FT.
(Also to nearest drlg. unit line, if any)

330'

16. NO. OF ACRES IN LEASE

800

17. NO. OF ACRES ASSIGNED
TO THIS WELL

40

18. DISTANCE FROM PROPOSED LOCATION*

TO NEAREST WELL, DRILLING, COMPLETED,
OR APPLIED FOR, ON THIS LEASE, FT.

1320'

19. PROPOSED DEPTH

4150'

20. ROTARY OR CABLE TOOLS

Rotary

21. ELEVATIONS (Show whether DF, RT, GR, etc.)

3456.2

22. APPROX. DATE WORK WILL START*

Nov. 15, 1971

23.

PROPOSED CASING AND CEMENTING PROGRAM

SIZE OF HOLE	SIZE OF CASING	WEIGHT PER FOOT	SETTING DEPTH	QUANTITY OF CEMENT
11"	8-5/8"	32#	710'	150 sx.
7-5/8"	5-1/2"	15.5#	3570'	275 sx.

We propose to drill the above caption well with a Rotary to a depth of 3570' in the Grayburg formation. If oil and gas is encountered in commercial quantities, the proposed casing program will be followed. The production string will be cemented with a sufficient amount of cement to cover the base of the salt -estimated base of salt 1620'. The well will be perforated and stimulated as conditions indicate.

IN ABOVE SPACE DESCRIBE PROPOSED PROGRAM: If proposal is to deepen or plug back, give data on present productive zone and proposed new productive zone. If proposal is to drill or deepen directionally, give pertinent data on subsurface locations and measured and true vertical depths. Give blowout preventer program, if any.

24.

SIGNED

Reagan Sweet

TITLE

Manager

DATE

10-25-71

(This space for Federal or State office use)

PERMIT NO.

APPROVAL DATE

APPROVED BY

TITLE

DATE

CONDITIONS OF APPROVAL, IF ANY:

NEW MEXICO OIL CONSERVATION COMMISSION
WELL LOCATION AND ACREAGE DEDICATION PLAT

Form C-102
Supersedes C-128
Effective 1-1-65

All distances must be from the outer boundaries of the Section.

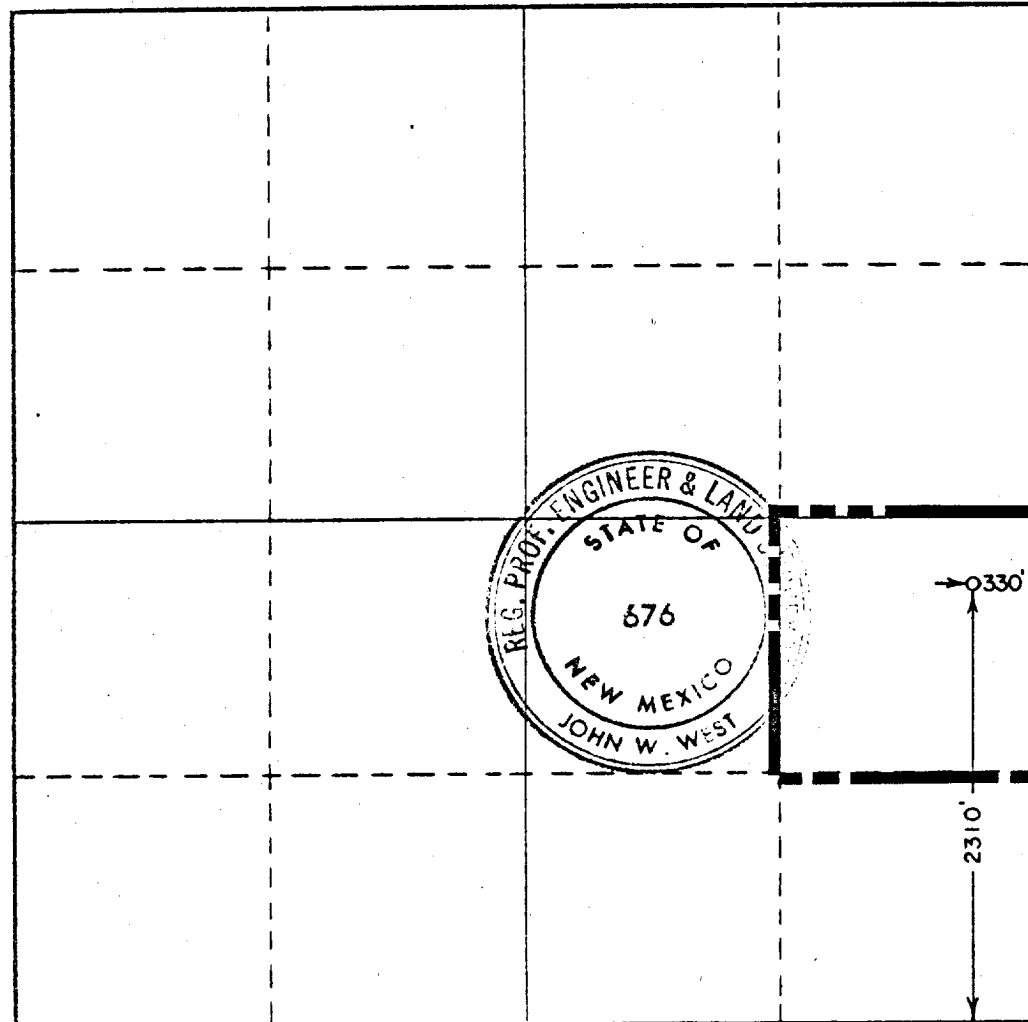
Operator HANSON OIL CORP.			Lease GINSBERG FEDERAL			Well No. 10		
Unit Letter I	Section 26	Township 18 SOUTH	Range 30 EAST	County EDDY				
Actual Footage Location of Well: 2310 feet from the SOUTH line and 330 feet from the EAST line								
Ground Level Elev. 3465.2	Producing Formation Shugart		Pool Yates, Seven Rivers, Queen, Grayburg			Dedicated Acreage: 40 Acres		

1. Outline the acreage dedicated to the subject well by colored pencil or hachure marks on the plat below.
2. If more than one lease is dedicated to the well, outline each and identify the ownership thereof (both as to working interest and royalty).
3. If more than one lease of different ownership is dedicated to the well, have the interests of all owners been consolidated by communitization, unitization, force-pooling, etc?

☐ Yes ☐ No If answer is "yes," type of consolidation _____

If answer is "no," list the owners and tract descriptions which have actually been consolidated. (Use reverse side of this form if necessary.) _____

No allowable will be assigned to the well until all interests have been consolidated (by communitization, unitization, forced-pooling, or otherwise) or until a non-standard unit, eliminating such interests, has been approved by the Commission.



CERTIFICATION

I hereby certify that the information contained herein is true and complete to the best of my knowledge and belief.

Name *Rengan Sweet*
Position **Manager**

Company
Hanson Oil Corp.

Date
October 26, 1971

I hereby certify that the well location shown on this plat was plotted from field notes of actual survey made by me or under my supervision, and that it is true and correct to the best of my knowledge and belief.

RECEIVED
OCT 27 1971
ARTESIA, NEW MEXICO

Date Surveyed
OCTOBER 4, 1971

Registered Professional Engineer and/or Land Surveyor

John W. West
Certificate No. **676**