



IN REPLY REFER TO:

UNITED STATES  
DEPARTMENT OF THE INTERIOR

GEOLOGICAL SURVEY

P. O. Drawer 1857

Roswell, New Mexico 88201

RECEIVED

JAN 20 1972

D. C. C.  
ARTESIA, OFFICE

January 19, 1972

Hanson Oil Corporation  
Post Office Box 1515  
Roswell, New Mexico 88201

Gentlemen:

Your "Amended" Notice of Intention to Drill well No. 12-Ginsberg Federal in the SW $\frac{1}{4}$ SE $\frac{1}{4}$  (810/S & 1700/E) sec. 26, T. 18 S., R. 30 E., N.M.P.M., Eddy County, New Mexico, lease New Mexico 025503, to a depth of 3700 feet to test the Yates-Seven Rivers-Queen-Grayburg formation in the Potash Area, is hereby approved.

One copy of the Notice is returned herewith. Please notify the District Engineer, Geological Survey, Post Office Drawer U, Artesia, New Mexico, 88210, in sufficient time for a representative to witness all cementing operations.

Sincerely yours,

BILLY J. SHOGER  
Acting Oil and Gas Supervisor

Attachment

cc:

Washington

Mining Branch (2)

RMOC-~~Artesia~~ (2) (w/2 cys Notice) ✓

Artesia (w/cy Notice)

Roswell (2) (w/cy Notice)



AMENDED

UNITED STATES  
DEPARTMENT OF THE INTERIOR  
GEOLOGICAL SURVEY

5. LEASE DESIGNATION AND SERIAL NO.

NM-025503

6. IF INDIAN, ALLOTTEE OR TRIBE NAME

7. UNIT AGREEMENT NAME

8. FARM OR LEASE NAME

Ginsberg-Federal

9. WELL NO.

12

10. FIELD AND POOL, OR WILDCAT

Shugart *Hand*11. SEC., T., R., M., OR BLK.  
AND SURVEY OR AREA

Sec. 26, T-18S, R-30E

12. COUNTY OR PARISH

Eddy

13. STATE

New Mexico

## APPLICATION FOR PERMIT TO DRILL, DEEPEN, OR PLUG BACK

1a. TYPE OF WORK

DRILL ☒DEEPEN ☐PLUG BACK ☐

b. TYPE OF WELL

OIL  
WELL ☒GAS  
WELL ☐

OTHER

JAN 20 1972

MULTIPLE  
ZONE ☐

2. NAME OF OPERATOR

Hanson Oil Corporation

O.C.C.

3. ADDRESS OF OPERATOR

ARTESIA, OFFICE

P. O. Box 1515 - Roswell, New Mexico 88201

4. LOCATION OF WELL (Report location clearly and in accordance with any State requirements.)\*

At surface

810' FSL &amp; 1700' FEL

At proposed prod. zone

Sec. 26, T-18-S, R-30-E, NMPM

Eddy County, New Mexico

14. DISTANCE IN MILES AND DIRECTION FROM NEAREST TOWN OR POST OFFICE\*

6 miles south of Loco Hills, New Mexico

15. DISTANCE FROM PROPOSED\*

LOCATION TO NEAREST  
PROPERTY OR LEASE LINE, FT.  
(Also to nearest drlg. unit line, if any)

810' - 380'

16. NO. OF ACRES IN LEASE

800

17. NO. OF ACRES ASSIGNED  
TO THIS WELL

40

18. DISTANCE FROM PROPOSED LOCATION\*

TO NEAREST WELL, DRILLING, COMPLETED,  
OR APPLIED FOR, ON THIS LEASE, FT.

1370'

19. PROPOSED DEPTH

3700'

20. ROTARY OR CABLE TOOLS

Rotary

21. ELEVATIONS (Show whether DF, RT, GR, etc.)

3478.3' GL

22. APPROX. DATE WORK WILL START\*

January 24, 1972

23.

## PROPOSED CASING AND CEMENTING PROGRAM

SIZE OF HOLE	SIZE OF CASING	WEIGHT PER FOOT	SETTING DEPTH	QUANTITY OF CEMENT
11"	8-5/8"	23#	750'	150 sx.
7-7/8"	5-1/2"	15.5#	3700'	275 sx.

We propose to drill the above captioned well with a rotary to a depth of 3700' in the Grayburg formation. If oil & gas is encountered in commercial quantities, the proposed casing program will be followed. The production string will be cemented with a sufficient amount of cement to cover the base of the salt. The well will be perforated and stimulated as conditions indicate.

RECEIVED

JAN 19 1972

U. S. GEOLOGICAL SURVEY  
ARTESIA, NEW MEXICO

IN ABOVE SPACE DESCRIBE PROPOSED PROGRAM: If proposal is to deepen or plug back, give data on present productive zone and proposed new productive zone. If proposal is to drill or deepen directionally, give pertinent data on subsurface locations and measured and true vertical depths. Give blowout preventer program, if any.

24.

SIGNED

*Gerald E. Harrington*

TITLE

Geologist

DATE

Jan. 17, 1972

(This space for Federal or State office use)

PERMIT NO.

APPROVAL DATE

APPROVED BY

TITLE

DATE

CONDITIONS OF APPROVAL, IF ANY:

**N MEXICO OIL CONSERVATION COMMISS**  
**WELL LOCATION AND ACREAGE DEDICATION PLAT**

Form C-102  
 Supersedes C-128  
 Effective 1-1-65

All distances must be from the outer boundaries of the Section.

**AMENDED**

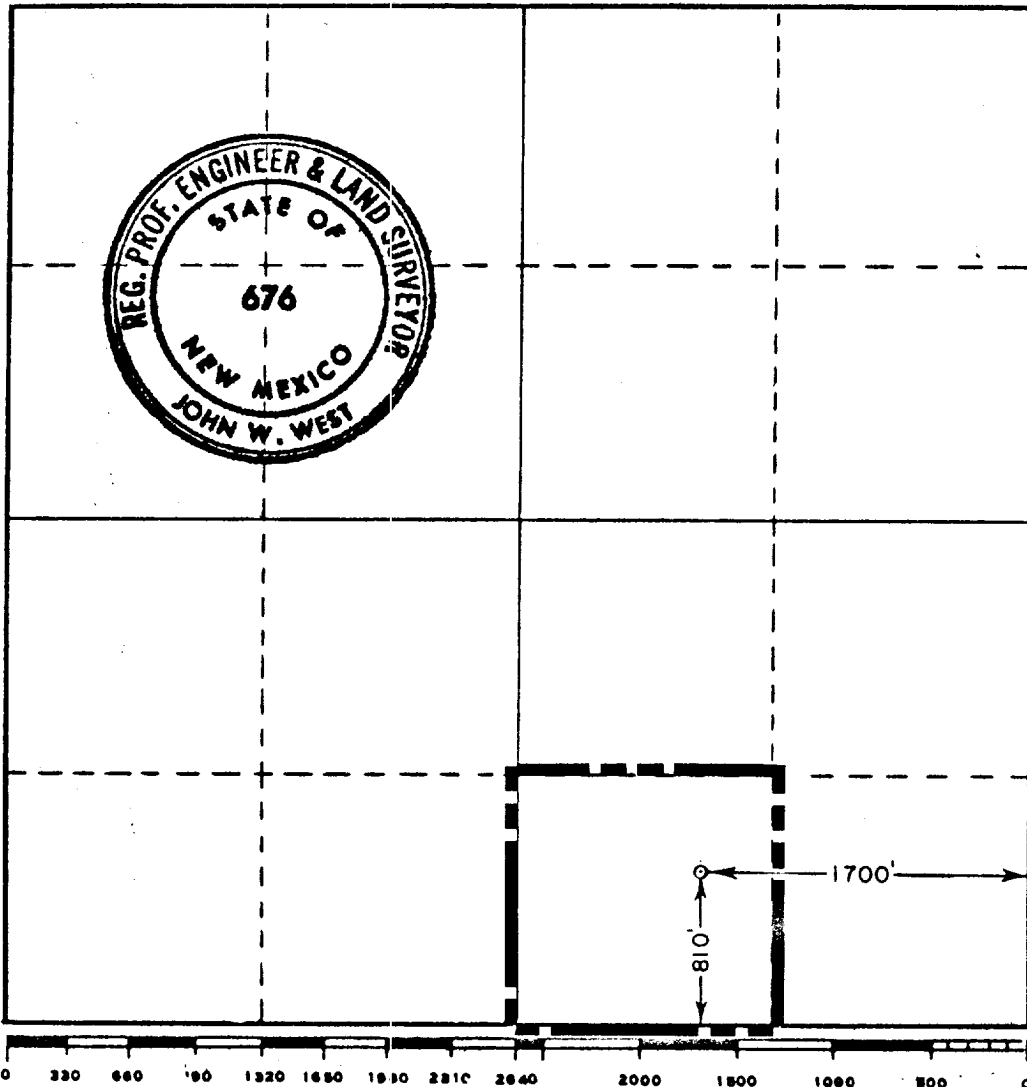
Operator <b>HANSON OIL CORP.</b>			Lease <b>GINSBURG FEDERAL</b>		Well No. <b>12</b>
Unit Letter <b>C</b>	Section <b>26</b>	Township <b>18 SOUTH</b>	Range <b>30 EAST</b>	County <b>EDDY</b>	
Actual Footage Location of Well: <b>810</b> feet from the <b>SOUTH</b> line and <b>1700</b> feet from the <b>EAST</b> line					
Ground Level Elev. <b>3478.3</b>	Producing Formation <b>Yates, 7-Rivers, Queen, Grayburg</b>			Pool <b>Shugart</b>	Dedicated Acreage: <b>40</b> Acres

1. Outline the acreage dedicated to the subject well by colored pencil or hachure marks on the plat below.
2. If more than one lease is dedicated to the well, outline each and identify the ownership thereof (both as to working interest and royalty).
3. If more than one lease of different ownership is dedicated to the well, have the interests of all owners been consolidated by communitization, unitization, force-pooling, etc?

☐ Yes   ☐ No   If answer is "yes," type of consolidation \_\_\_\_\_

If answer is "no," list the owners and tract descriptions which have actually been consolidated. (Use reverse side of this form if necessary.) \_\_\_\_\_

No allowable will be assigned to the well until all interests have been consolidated (by communitization, unitization, forced-pooling, or otherwise) or until a non-standard unit, eliminating such interests, has been approved by the Commission.



**CERTIFICATION**

I hereby certify that the information contained herein is true and complete to the best of my knowledge and belief.

*Gerald E. Harrington*  
 Name

**Gerald E. Harrington**

Position

**Geologist**

Company

**Hanson Oil Corporation**

Date

**January 17, 1972**

**RECEIVED**  
 I hereby certify that the well location shown on this plat was plotted from field notes of actual surveys made by me or under my supervision, and that the same is true and correct to the best of my knowledge and belief.

Date Surveyed

**JANUARY 14, 1972**

Registered Professional Engineer and/or Land Surveyor

*John W. West*  
 Certificate No. **676**