



UNITED STATES
DEPARTMENT OF THE INTERIOR
GEOLOGICAL SURVEY
P. O. Drawer 1857
Roswell, New Mexico 88201

IN REPLY REFER TO:

RECEIVED

FEB 7 1972

D. S. C.
ARTESIA, OFFICE

FEB 4 1972

Hanson Oil Corporation
Post Office Box 1515
Roswell, New Mexico 88201

Gentlemen:

Your Notice of Intention to Drill well No. 13 Ginsberg Federal in the SW $\frac{1}{4}$ NE $\frac{1}{4}$ sec. 26, T. 18 S., R. 30 E., N.M.P.M., Eddy County, New Mexico, lease New Mexico 025503, to a depth of 3650 feet to test the Grayburg formation in the Potash Area, is hereby approved.

One copy of the Notice is returned herewith. Please notify the District Engineer, Geological Survey, Post Office Drawer U, Artesia, New Mexico, 88210, in sufficient time for a representative to witness all cementing operations.

Sincerely yours,

(ORIG. SENT TO C. F. H. L. LOCK)

1000

Attachment

cc:
Washington
Mining Branch (2)
✓ MDOC-Artesia (2) (w/2 cys Notice)
Artesia (w/cy Notice)
Roswell (2) (w/cy Notice)

CORPORATION

POST OFFICE BOX 511 CARLSBAD NEW MEXICO 88220

February 3, 1972

Hanson Oil Corporation
P. O. Box 1515
Roswell, New Mexico 88201

Gentlemen:

Duval Corporation has no objection to the drilling of your proposed Ginsberg Federal #13 in Section 26 T-18-S R-30-E, which is located 1,650 feet from the north line and 1,800 feet from the east line, Eddy county, New Mexico.

We understand that the casing requirements of R-111-A will be observed.

Very truly yours,

DUVAL CORPORATION



K. E. Elers, Resident Manager
Carlsbad Properties

KEE/aws

UNITED STATES
DEPARTMENT OF THE INTERIOR
GEOLOGICAL SURVEY

30-015-20572

5. LEASE DESIGNATION AND SERIAL NO.

NM-025503

6. IF INDIAN, ALLOTTEE OR TRIBE NAME

7. UNIT AGREEMENT NAME

8. FARM OR LEASE NAME

Ginsberg Federal

9. WELL NO.

#13

FIELD AND POOL, OR WILDCAT

Shugart

SEC. T, R, M, OR BLK.
AND SURVEY OR AREA

Sec. 26, T-18S, R-30E

12. COUNTY OR PARISH

Eddy

13. STATE

New Mexico

1a. TYPE OF WORK

DRILL ☒DEEPEN ☐PLUG BACK ☐

b. TYPE OF WELL

OIL
WELL ☒GAS
WELL ☐

OTHER

FEB 7 1972

MULTIPLE
ZONE ☐

2. NAME OF OPERATOR

Hanson Oil Corporation

3. ADDRESS OF OPERATOR

P. O. Box 1515 - Roswell, New Mexico 88201

4. LOCATION OF WELL (Report location clearly and in accordance with any State requirements.)*

At surface

1650' FNL & 1800' FEL

At proposed prod. zone

Sec. 26, T-18-S, R-30-E, NMPM

Eddy County, New Mexico

14. DISTANCE IN MILES AND DIRECTION FROM NEAREST TOWN OR POST OFFICE*

6 miles south of Loco Hills, New Mexico

15. DISTANCE FROM PROPOSED*

1650' - 330'

LOCATION TO NEAREST
PROPERTY OR LEASE LINE, FT.
(Also to nearest drlg. unit line, if any)

16. NO. OF ACRES IN LEASE

800

18. DISTANCE FROM PROPOSED LOCATION*

TO NEAREST WELL, DRILLING, COMPLETED,
OR APPLIED FOR, ON THIS LEASE, FT.

990'

19. PROPOSED DEPTH

3650'

17. NO. OF ACRES ASSIGNED
TO THIS WELL

40

20. ROTARY OR CABLE TOOLS

Rotary

21. ELEVATIONS (Show whether DF, RT, GR, etc.)

3450.7 GL

22. APPROX. DATE WORK WILL START*

February 7, 1972

23.

PROPOSED CASING AND CEMENTING PROGRAM

SIZE OF HOLE	SIZE OF CASING	WEIGHT PER FOOT	SETTING DEPTH	QUANTITY OF CEMENT
15"	12-3/4"	33#	715'	200 sx - circulate
11"	8-5/8"	23#	1740'	50 sx
7-7/8"	5-1/2"	15.5#	3650'	450 sx - circulate

We propose drilling the referenced well with rotary tools to a total depth of approximately 3650' or to a sufficient depth to test the Grayburg formation. Surface casing will be set in the top of the salt & cemented to surface. A salt portection casing will be run to 100 feet below base of the salt and cemented with 50 sx. of cement. If commercial production is encountered the free portion of the salt protection casing will be pulled and 5½" casing will be run to a total depth and cemented with a sufficient amount of cement to circulate to surface. The well will then be perforated and stimulated as conditions indicate. (Casing requirements of R-111-A will be observed.)

OPERATIONS BY

☒ RECORD SERVICE☐ D. OF G. ON FILE☐ D. OF D. ATTACHED

BOND COVERAGE:

☐ \$5,000 ATTACHED☐ \$5,000 ON FILE☒ PRESSEY'S NATIONAL☐ OPERATOR'S NATIONAL

DESCRIBE PROPOSED PROGRAM: If proposal is to deepen or plug back, give data on present productive zone and proposed new productive zone. If drill or deepen directionally, give pertinent data on subsurface locations and measured and true vertical depths. (Give blowout prevention program, if any.)

SIGNED

Donald E. Harrington

TITLE Geologist

DATE Feb. 2, 1972

(This space for Federal or State office use)

PERMIT NO.

APPROVAL DATE

APPROVED BY

TITLE

DATE

CONDITIONS OF APPROVAL, IF ANY:

NEW MEXICO OIL CONSERVATION COMMISSION
WELL LOCATION AND ACREAGE DEDICATION PLAT

Form C-112
Supersedes C-128
Effective 1-1-65

All distances must be from the outer boundaries of the Section

Operator HANSON OIL CORP.			Lessee GINSBERG FEDERAL			Acreage 13		
Section Letter G	Section 26	Range 18 SOUTH	Meridian 30 EAST	County EDDY				
Actual distance from the well								
1650		feet from the	NORTH	1800		feet from the	EAST	feet
Ground Level Elev. 2470		Producing Formation Yates, 7			Pool Shugart		Dedicated Acreage 40	
		Rivers, Queen, Grayburg						

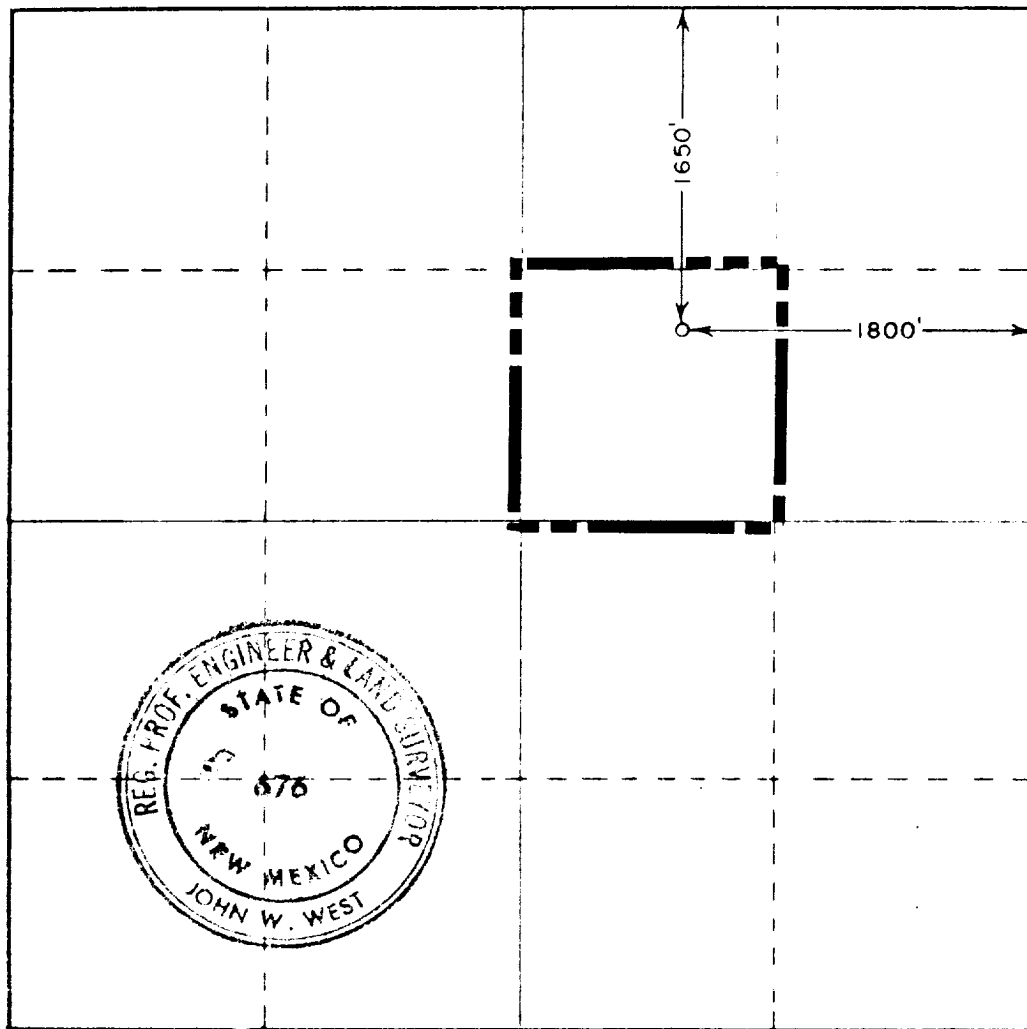
1. Outline the acreage dedicated to the subject well by colored pencil or hachure marks on the plat below.
2. If more than one lease is dedicated to the well, outline each and identify the ownership thereof (both as to working interest and royalty).
3. If more than one lease of different ownership is dedicated to the well, have interests of owners been consolidated by communitization, unitization, force-pooling, etc?

☐ Yes ☐ No If answer is "yes," type of consolidation _____

If answer is "no," list the owners and tract descriptions which have actually been consolidated (Use reverse side of this form if necessary.) _____

No allowable will be assigned to the well until all interests have been consolidated (by communitization, unitization, forced-pooling, or otherwise) or until a non-standard unit, eliminating such interests, has been approved by the Commission.

RECEIVED
FEB 3 - 1972
U. S. GEOLOGICAL SURVEY
ARTESIA, NEW MEXICO



CERTIFICATION

I hereby certify that the information contained herein is true and complete to the best of my knowledge and belief.

Gerald E. Harrington
Name _____

Gerald E. Harrington

Geologist

Hanson Oil Corporation

February 2, 1972

I hereby certify that the well location shown on this plat was plotted from field notes of actual surveys made by me or under my supervision, and that the same is true and correct to the best of my knowledge and belief.

Date Surveyed _____

NOVEMBER 20, 1971

Registered Professional Engineer and Land Surveyor

John W. West
Certificate No. **676**

0 330 660 990 1320 1650 1980 2310 2640 2000 1800 1000 800 0