

NEW MEXICO OIL CONSERVATION COMMISSION
WELL LOCATION AND ACREAGE DEDICATION PLAT

Supersedes Order
of the 11th Sept.

All distances must be from the outer boundaries of the Section

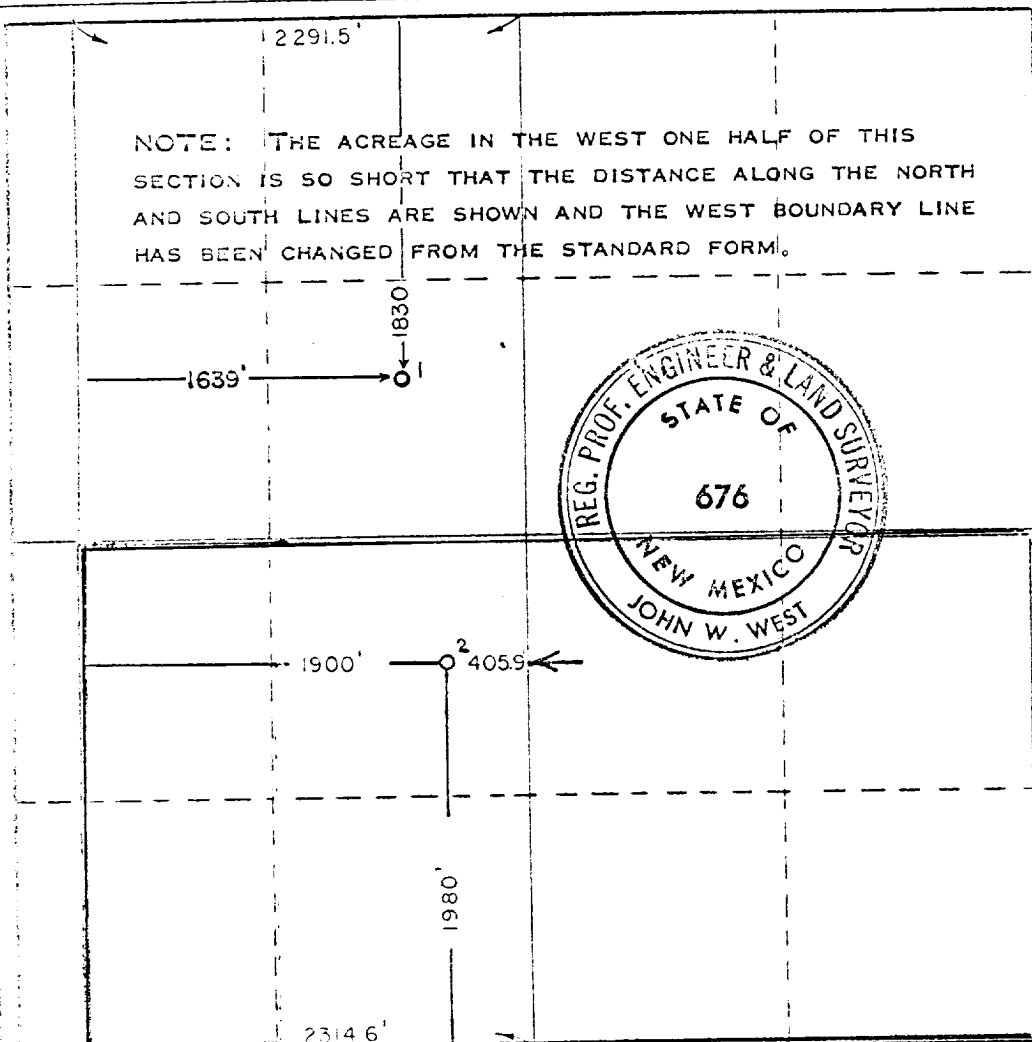
Midwest Oil Corp.			SOUTH EMPIRE DEEP UNIT		2
Section	Township	Range	County		
K	6	18 SOUTH	29 EAST EDDY		
Actual Section Location of Well:					
1980	feet from the	SOUTH	line and	1900	feet from the
				WEST	
Ground Level Elev.	Producing Formation	Pool	Sectioned Acreage		
3641.3	Morrow	Wildcat Morrow	299.93		

- Outline the acreage dedicated to the subject well by colored pencil or hachure marks on the plat below.
- If more than one lease is dedicated to the well, outline each and identify the ownership thereof (both as to working interest and royalty).
- If more than one lease of different ownership is dedicated to the well, have the interests of all owners been consolidated by communitization, unitization, force-pooling, etc?

☐ Yes ☐ No If answer is "yes," type of consolidation _____

If answer is "no," list the owners and tract descriptions which have actually been consolidated. (Use reverse side of this form if necessary.) _____

No allowable will be assigned to the well until all interests have been consolidated (by communitization, unitization, forced-pooling, or otherwise) or until a non-standard unit, eliminating such interests, has been approved by the Commission.



CERTIFICATION

I hereby certify that the information contained herein is true and complete to the best of my knowledge and belief.

Carolyn Turner
Carolyn Turner

Name
Carolyn Turner

Position
Production Clerk

Company
Midwest Oil Corporation

Date
February 23, 1972

I hereby certify that the location shown on this plat was plotted from field notes of actual survey by me, under my supervision, and that the same is true and correct to the best of my knowledge and belief.

RECEIVED
FEB 25 1972
ARTESIA, NEW MEXICO

Date Surveyed
FEBRUARY 17, 1972

Registered Professional Engineer
and/or Land Surveyor

John W. West
Certificate No. 676