

**MEXICO OIL CONSERVATION COMMISSION
WELL LOCATION AND ACREAGE DEDICATION PLAT**

RECEIVED

MAY 31 1972

Form C-102
Supersedes C-128
Effective 1-1-65

All distances must be from the outer boundaries of the Section.

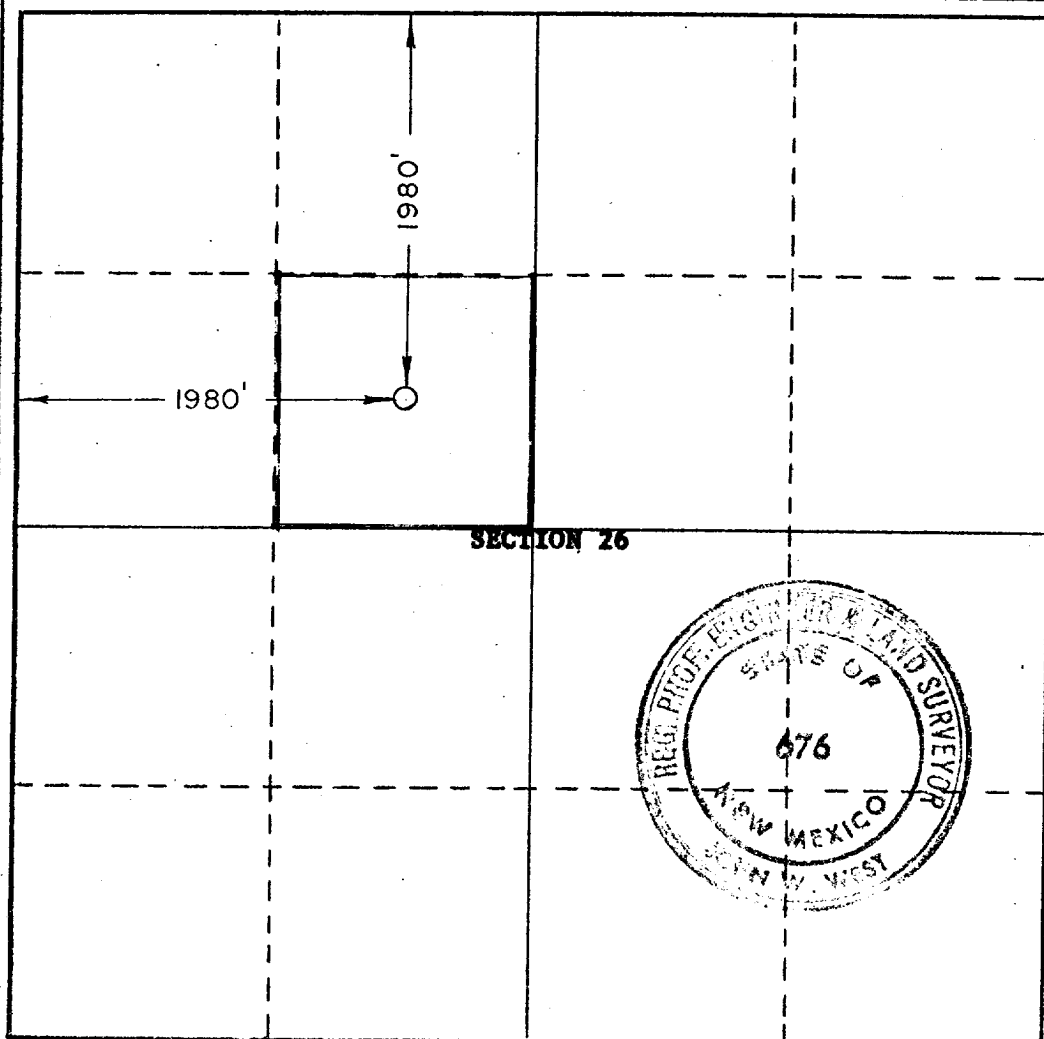
Operator SKELLY OIL COMPANY			Lease LEA "D"		O. C. C. Well No. ARTESIA, OFFICE 7
Unit Letter F	Section 26	Township 17 South	Range 31 East	County Eddy	
Actual Footage Location of Well: <div style="display: flex; justify-content: space-between;"> 1980 feet from the North line and 1980 feet from the West line </div>					
Ground Level Elev.	Producing Formation Grayburg-San Andres	Pool Grayburg Jackson	Dedicated Acreage: 40 Acres		

1. Outline the acreage dedicated to the subject well by colored pencil or hachure marks on the plat below.
2. If more than one lease is dedicated to the well, outline each and identify the ownership thereof (both as to working interest and royalty).
3. If more than one lease of different ownership is dedicated to the well, have the interests of all owners been consolidated by communitization, unitization, force-pooling, etc?

☐ Yes ☐ No If answer is "yes," type of consolidation _____

If answer is "no," list the owners and tract descriptions which have actually been consolidated. (Use reverse side of this form if necessary.) _____

No allowable will be assigned to the well until all interests have been consolidated (by communitization, unitization, forced-pooling, or otherwise) or until a non-standard unit, eliminating such interests, has been approved by the Commission.



CERTIFICATION

I hereby certify that the information contained herein is true and complete to the best of my knowledge and belief.

Name C. J. Love **C. J. Love**
 Position **District Production Manager**
 Company **Skelly Oil Company**
 Date **May 19, 1972**

RECEIVED
MAY 23 1972
 I hereby certify that the information shown on this plat was plotted from field notes of _____ by me or under my supervision and that the same is true and correct to the best of my knowledge and belief.
U.S. GEOLOGICAL SURVEY
ARTESIA NEW MEXICO

Date Surveyed **MAY 18, 1972**
 Registered Professional Engineer and/or Land Surveyor
John W. West

Certificate No. **676**

0 330 660 990 1320 1650 1980 2310 2640 2000 1800 1000 500 0