

UNITED STATES
DEPARTMENT OF THE INTERIOR
GEOLOGICAL SURVEY

APPLICATION FOR PERMIT TO DRILL, DEEPEN, OR PLUG BACK

1a. TYPE OF WORK

DRILL ☒DEEPEN ☐PLUG BACK ☐

b. TYPE OF WELL

OIL
WELL ☒GAS
WELL ☐OTHER ☐SINGLE
ZONE ☒MULTIPLE
ZONE ☐

2. NAME OF OPERATOR

Amoco Production Company

3. ADDRESS OF OPERATOR

BOX 68, HOBBS, N. M. 88240

4. LOCATION OF WELL (Report location clearly and in accordance with any State requirements.)*

AT SURFACE

156 FEET x 330' FWL Sec. 11

(UNIT E, Sec 11
SW 1/4 NW 1/4)

14. DISTANCE IN MILES AND DIRECTION FROM NEAREST TOWN OR POST OFFICE*

15. DISTANCE FROM PROPOSED*

LOCATION TO NEAREST
PROPERTY OR LEASE LINE, FT.
(Also to nearest drlg. unit line, if any)18. DISTANCE FROM PROPOSED LOCATION*
TO NEAREST WELL, DRILLING, COMPLETED,
OR APPLIED FOR, ON THIS LEASE, FT.

16. NO. OF ACRES IN LEASE

19. PROPOSED DEPTH

6150'

17. NO. OF ACRES ASSIGNED
TO THIS WELL

40

20. ROTARY OR CABLE TOOLS

ROTARY

21. ELEVATIONS (Show whether DF, RT, GR, etc.)

22. APPROX. DATE WORK WILL START*

6-5-72

23.

PROPOSED CASING AND CEMENTING PROGRAM

SIZE OF HOLE	SIZE OF CASING	WEIGHT PER FOOT	SETTING DEPTH	QUANTITY OF CEMENT
24-11"	8 5/8"	24.5	1000'	450 Sx. Cmc.
7 7/8"	4 1/2"	9.5-10.5"	6150'	300 Sx. SUFF / Sect + gel + 300 Sx. mast. to fill 600' of overpay.

MUD PROGRAM - NATIVE MUD & WATER 0- 4500' -
- MINIMUM QUALITY MUD PLUS GELLED CHEMICAL MUD - 4500' - TD.

BOP HOOKUP - SKETCH ATTACHED.

LOCATION PLAT - ATTACHED

After Drilling well, logs shall be run and evaluating AS
necessary in attempting commercial production.THIS APPROVAL IS RESCINDED IF OPERATIONS
ARE NOT COMMENCED WITHIN 3 MONTHS.
EXPIRES 9-1-72

REPLACEMENT WELL FOR MALCO B FEDERAL No. 1

IN ABOVE SPACE DESCRIBE PROPOSED PROGRAM: If proposal is to deepen or plug back, give data on present productive zone and proposed new productive zone. If proposal is to drill or deepen directionally, give pertinent data on subsurface locations and measured and true vertical depths. Give blowout preventer program, if any.

24.

SIGNED

J. E. Haly

TITLE

AREA SUPERINTENDENT

DATE

MAY 26 1972

(This space for Federal or State office use)

JUN 5 1972

PERMIT NO.

APPROVAL DATE

APPROVED BY

J. E. Haly

TITLE

DISTRICT ENGINEER

DATE

JUN 5 1972

CONDITIONS OF APPROVAL, IF ANY:

04-0588-112
1-21V
1-21P
1-21Y
1-HONDOPROPOSED OPERATIONS WILL NOT
AFFECT ENVIRONMENT SIGNIFICANTLY.

*See Instructions On Reverse Side

30-015-20665

5. LEASE DESIGNATION AND SERIAL NO.

10-067858

6. IF INDIAN, ALLOTTEE OR TRIBE NAME

7. UNIT AGREEMENT NAME

8. FARM OR LEASE NAME

MALCO B Federal

9. WELL NO.

3

10. FIELD AND POOL OR WILDCAT

EMPIRE 160 X

11. SEC., T., R., M., OR BLK.
AND SURVEY OR AREA

11-18-27 NMPM

12. COUNTY OR PARISH

13. STATE

EDDY

N.M.

NEW MEXICO OIL CONSERVATION COMMISSION
WELL LOCATION AND ACREAGE DEDICATION PLAT

RECEIVED

Form C-162
Supersedes C-128
Effective 1-1-65

JUN 6 1972

All distances must be from the outer boundaries of the Section.

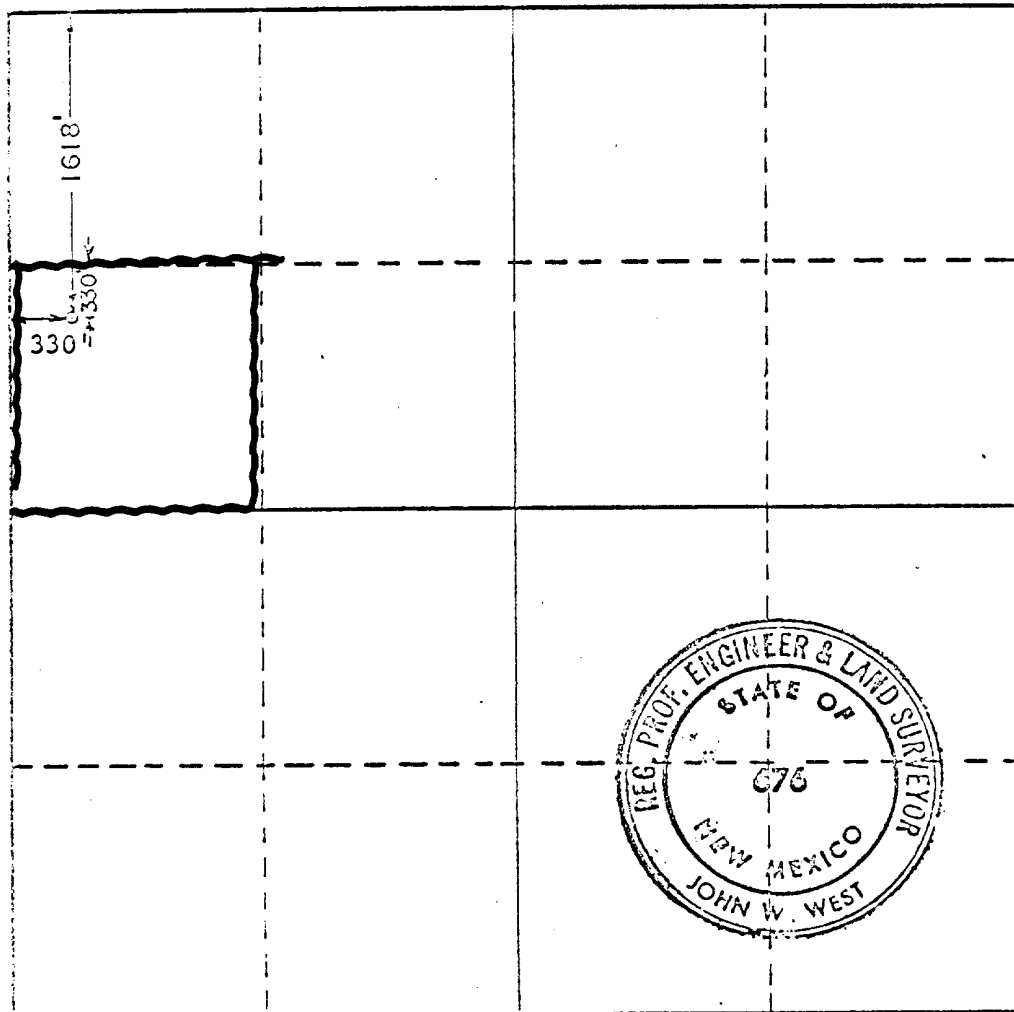
Operator AMOCO PRODUCTION CO.		Lessee MALCO "B" FED.		O. C. C. ARTESIA, OFFICE		Well No. 3
East Letter E	Section 11	Township 18 SOUTH	Range 27 EAST	County EDDY		
Actual Footage Location of Well: 1618 feet from the NORTH line and 330 feet from the WEST line						
Ground Level Elev. 3549.0	Producing Formation ABO		Pool EMPIRE ABO		Dedicated Acreage: 40 Acres	

1. Outline the acreage dedicated to the subject well by colored pencil or hachure marks on the plat below.
2. If more than one lease is dedicated to the well, outline each and identify the ownership thereof (both as to working interest and royalty).
3. If more than one lease of different ownership is dedicated to the well, have the interests of all owners been consolidated by communitization, unitization, force-pooling, etc?

☐ Yes ☐ No If answer is "yes," type of consolidation _____

If answer is "no," list the owners and tract descriptions which have actually been consolidated. (Use reverse side of this form if necessary.) _____

No allowable will be assigned to the well until all interests have been consolidated (by communitization, unitization, forced-pooling, or otherwise) or until a non-standard unit, eliminating such interests, has been approved by the Commission.



CERTIFICATION

I hereby certify that the information contained herein is true and complete to the best of my knowledge and belief.

Name
V E Staley
Position
AREA SUPERINTENDENT
Company
Amoco Production Company

Date
MAY 26 1972

I hereby certify that the well location shown on this plat was plotted from field notes of actual surveys made by me under my supervision, and that the same is true and correct to the best of my knowledge and belief.

Date Surveyed
MAY 24, 1972

Registered Professional Engineer and/or Land Surveyor

John W. West

Certificate No. 676

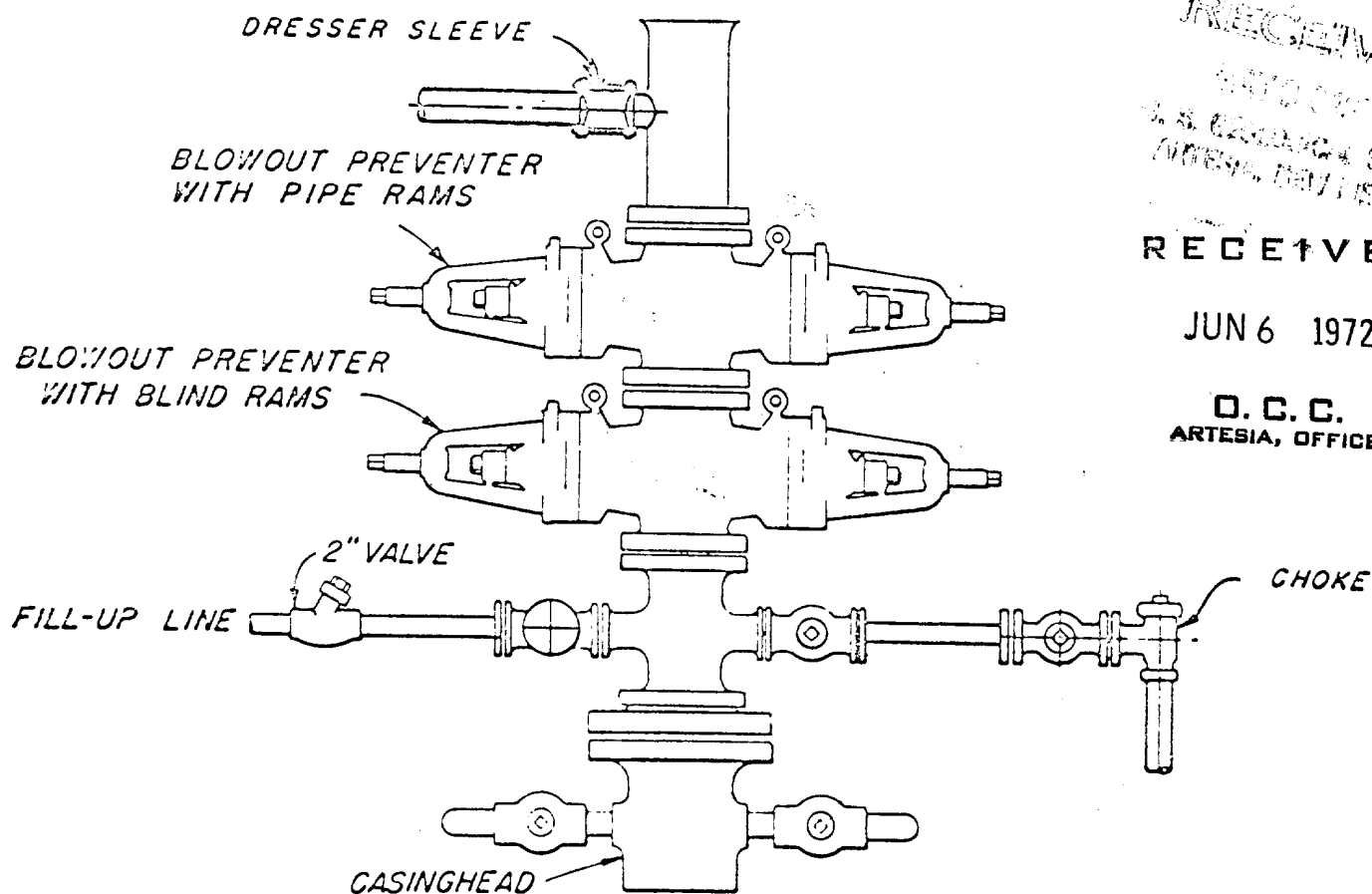
0 330 660 990 1320 1650 1980 2310 2640 2970 3300 3630 3960 4290 4620 4950 5280 5610 5940 6270 6600

ATTACHMENT "B"

NOTES

1. BLOW-OUT PREVENTERS AND MASTER VALVE MAY BE MANUAL OPERATED.
2. ALL FITTINGS MUST BE IN GOOD CONDITION, 2,000# W.P. (4,000 P.S.I. TEST), MINIMUM.
3. NIPPLE ABOVE BLOW-OUT PREVENTER SHALL BE SAME SIZE AS CASING BEING DRILLED THROUGH.
4. KELLY COCK TO BE INSTALLED ON KELLY.
5. CMSCO OR COMPARABLE SAFETY VALVE MUST BE AVAILABLE ON RIG FLOOR AT ALL TIMES WITH PROPER CONNECTION OR SUB, 2,000# W.P. (4,000 P.S.I. TEST), MINIMUM.
6. RAMS IN PREVENTERS WILL BE INSTALLED AS FOLLOWS:

TOP PREVENTOR	-	DRILL PIPE OR CASING RAMS
BOTTOM PREVENTER	-	BLIND RAMS OR MASTER VALVE.
7. SPOOL OR CROSS MAY BE ELIMINATED IF CONNECTIONS ARE AVAILABLE IN THE LOWER PART OF THE BLOW-OUT PREVENTER BODY.
8. DOUBLE OR SPACE SAVER TYPE PREVENTERS MAY BE USED IN LIEU OF TWO SINGLE PREVENTERS.
9. CROSS WITH SIDE OUTLETS MAY BE PLACED BETWEEN MASTER GATE AND BLOW-OUT PREVENTER IF TWO SINGLE UNITS ARE USED.



BLOWOUT PREVENTER HOOK-UP
2,000 psi Working Pressure
EXHIBIT D-2

RECEIVED

U.S. OFFICE OF MINERAL DEVELOPMENT

RECEIVED

JUN 6 1972

D. C. C.
ARTESIA, OFFICE

ARTESIA NM 9 MI

ST HWAY 83

1.7

2.2

HAROLD TRIGG-1

H-9

H-3

H-7

H-2

H-6

H-5

H-4

H-3

E-2

E-1

D-2

D-1

D-5

D-3

G-1

G-2

G-3

G-4

G-5

G-6

G-7

G-8

G-9

G-10

G-11

G-12

G-13

K-2

K-1

B-2

B-1

CC-2

CC-1

CM-1

EB-1

F-10

F-1

F-2

F-3

F-4

F-5

F-6

F-7

F-8

F-9

F-10

F-11

F-12

F-13

F-14

F-15

F-16

F-17

F-18

F-19

F-20

F-21

F-22

F-23

F-24

F-25

F-26

F-27

F-28

F-29

F-30

F-31

F-32

F-33

F-34

F-35

F-36

F-37

F-38

F-39

F-40

F-41

F-42

F-43

F-44

F-45

F-46

F-47

F-48

F-49

F-50

F-51

F-52

F-53

F-54

F-55

F-56

F-57

F-58

F-59

F-60

F-61

F-62

F-63

F-64

F-65

F-66

F-67

F-68

F-69

F-70

F-71

F-72

F-73

F-74

F-75

F-76

F-77

F-78

F-79

F-80

F-81

F-82

F-83

F-84

RECEIVED

MAY 30 1972

U. S. GEOLOGICAL SURVEY
ARTESIA, NEW MEXICO

EMPIRE ABO OIL POOL
RECEIVED

JUN 6 1972

O. C. C.

ARTESIA, OFFICE

Amoco Production Company,

MALCO B FEDERAL # 3

*Malco B
Well 3
Produced by 700' interval completion
180' x 150'*