

UNITED STATES  
DEPARTMENT OF THE INTERIOR  
GEOLOGICAL SURVEY

## APPLICATION FOR PERMIT TO DRILL, DEEPEN, OR PLUG BACK

## 1a. TYPE OF WORK

DRILL ☒DEEPEN ☐PLUG BACK ☐

## b. TYPE OF WELL

OIL  
WELL ☐GAS  
WELL ☒OTHER ☐SINGLE  
ZONE ☐MULTIPLE  
ZONE ☐

## 2. NAME OF OPERATOR

Coquina Oil Corporation

## 3. ADDRESS OF OPERATOR

200 Bldg. of Southwest, Midland, Texas

## 4. LOCATION OF WELL (Report location clearly and in accordance with any State requirements.)\*

At surface

1930' FNL and 660' FEL

At proposed prod. zone

Same

## 14. DISTANCE IN MILES AND DIRECTION FROM NEAREST TOWN OR POST OFFICE\*

9 miles southwest of Artesia

## 15. DISTANCE FROM PROPOSED\*

LOCATION TO NEAREST

PROPERTY OR LEASE LINE, FT.

(Also to nearest drig. unit line, if any)

660'

## 18. DISTANCE FROM PROPOSED LOCATION\*

TO NEAREST WELL, DRILLING, COMPLETED,

OR APPLIED FOR, ON THIS LEASE, FT.

660'

## 16. NO. OF ACRES IN LEASE

160

## 17. NO. OF ACRES ASSIGNED

TO THIS WELL

320

## 19. PROPOSED DEPTH

8900'

## 20. ROTARY OR CABLE TOOLS

Rotary

## 21. ELEVATIONS (Show whether DF, RT, GR, etc.)

GL 3470

## 22. APPROX. DATE WORK WILL START\*

November 25, 1972

## 23.

## PROPOSED CASING AND CEMENTING PROGRAM

SIZE OF HOLE	SIZE OF CASING	WEIGHT PER FOOT	SETTING DEPTH	QUANTITY OF CEMENT
17 1/4	13 3/8	61	500	Circulate
12 1/4	8 5/8	24	1300	Circulate
7 7/8	4 1/2	10.5, 11.6	8900	To Be Determined

Drilling Program: Drill 17 1/4" hole into San Andres to 500' and cement 13 3/8" casing - Circulate cement to surface. Drill 12 1/4" hole to approximately 1300'. Cement 8 5/8" casing at 1300' and circulate cement to surface. Drill 7 7/8" hole to T.D.

Blowout Preventors: Will be installed on 8 5/8" after it has been cemented and will be kept installed until T.D.

IN ABOVE SPACE DESCRIBE PROPOSED PROGRAM: If proposal is to deepen or plug back, give data on present productive zone and proposed new productive zone. If proposal is to drill or deepen directionally, give pertinent data on subsurface locations and measured and true vertical depths. Give blowout preventer program, if any.

## 24.

SIGNED

*J. Taylor*

TITLE

Superintendent

DATE

November 17, 1972

(This space for Federal or State office use)

PERMIT NO.

WITNESS CEMENTING THE

8 5/8" CASING.

APPROVAL DATE

APPROVED BY  
CONDITIONS OF APPROVAL, IF ANYAPPROVED  
NOV 28 1972  
R. C. BEEKMAN  
ACTING DISTRICT ENGINEERTHIS APPROVAL IS RESCINDED IF OPERATIONS  
ARE NOT COMMENCED WITHIN 3 MONTHS.  
FEB 28 1973  
\*See Instructions On Reverse SideRECEIVED  
NOV 20 1972  
U. S. GEOLOGICAL SURVEY  
ARTESIA, NEW MEXICO  
C-11 WATER BASE  
13 3/8"  
C-11 BEHIND THE 8 5/8"  
CASING MUST BE CIRCULATED

Subject to Approval of Community  
Represent prior to drilling this well.

## Instructions

**General:** This form is designed for submitting proposals to perform certain well operations, as indicated, on all types of lands and leases for appropriate action by either a Federal or a State agency, or both, pursuant to applicable Federal and/or State laws and regulations. Any necessary special instructions concerning the use of this form and the number of copies to be submitted, particularly with regard to local, area, or regional procedures and practices, either are shown below or will be issued by, or may be obtained from, the local Federal and/or State office.

**Item 1:** If the proposal is to redrill to the same reservoir at a different subsurface location or to a new reservoir, use this form with appropriate notations. Consult applicable State or Federal regulations concerning subsequent work proposals or reports on the well.

**Item 4:** If there are no applicable State requirements, locations on Federal or Indian land should be described in accordance with Federal requirements. Consult local State or Federal office for specific instructions.

**Item 14:** Needed only when location of well cannot readily be found by road from the land or lease description. A plat, or plats, separate or on this reverse side, showing the roads to, and the surveyed location of, the well, and any other required information, should be furnished when required by Federal or State agency offices.

**Items 15 and 18:** If well is to be, or has been directionally drilled, give distances for subsurface location of hole in any present or objective production zone.

**Item 22:** Consult applicable Federal or State regulations, or appropriate officials, concerning approval of the proposal before operations are started.

**MEXICO OIL CONSERVATION COMMISSION  
WELL LOCATION AND ACREAGE DEDICATION PLAT**

Form C-102  
Supersedes C-128  
Effective 1-1-65

All distances must be from the outer boundaries of the Section.

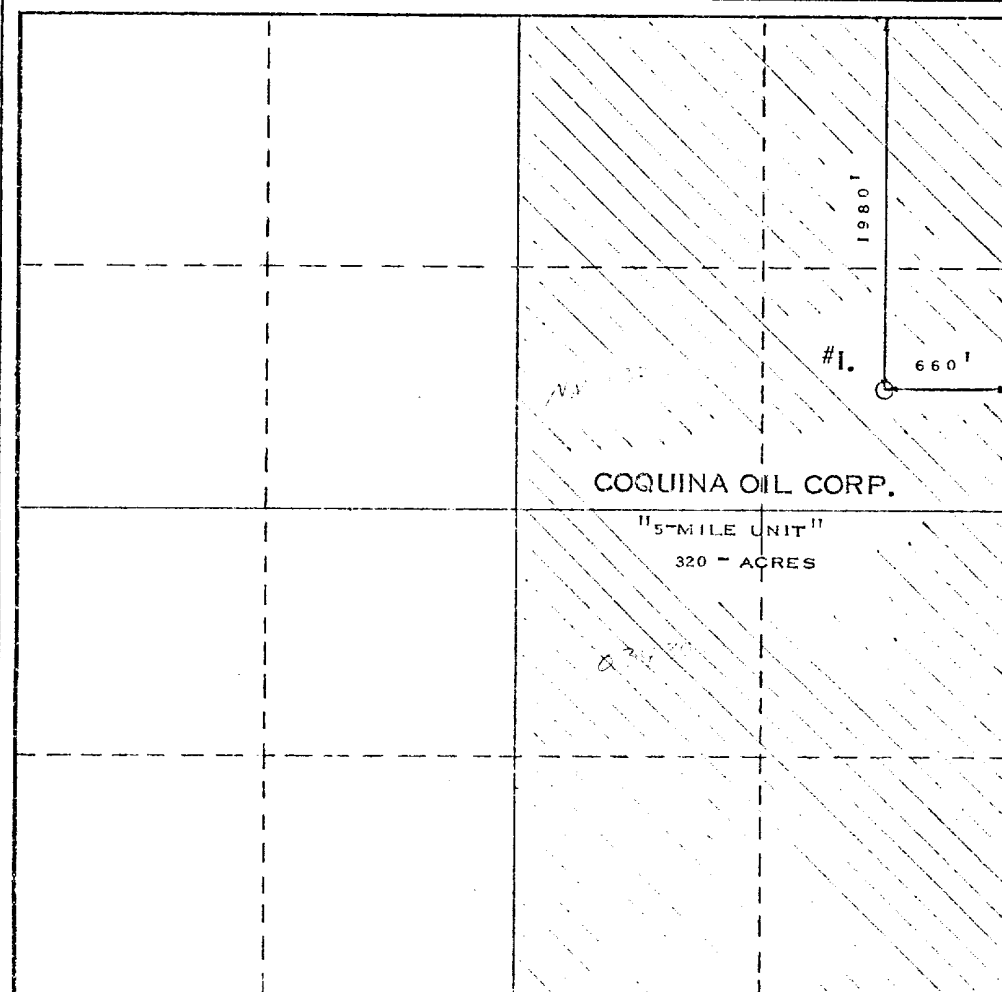
Operator <b>COQUINA OIL CORP.</b>			Lease <b>FIVE MILE UNIT</b>		Well No. <b>1</b>
Unit Letter <b>"H"</b>	Section <b>14</b>	Township <b>18-S</b>	Range <b>25-E</b>	County <b>EDDY</b>	
Actual Footage Location of Well: <div style="display: flex; justify-content: space-between;"> <span>1980 feet from the <b>NORTH</b> line and</span> <span>660 feet from the <b>EAST</b> line</span> </div>					
Ground Level Elev: <b>3470</b>	Producing Formation <b>MORROW</b>	Pool <b>ATCKA, MORROW, WEST (GAS)</b>		Dedicated Acreage: <b>320</b> Acres	

1. Outline the acreage dedicated to the subject well by colored pencil or hachure marks on the plat below.
2. If more than one lease is dedicated to the well, outline each and identify the ownership thereof (both as to working interest and royalty).
3. If more than one lease of different ownership is dedicated to the well, have the interests of all owners been consolidated by communitization, unitization, force-pooling, etc?

☒ Yes    ☐ No    If answer is "yes," type of consolidation Communitization - In progress

If answer is "no," list the owners and tract descriptions which have actually been consolidated. (Use reverse side of this form if necessary.) \_\_\_\_\_

No allowable will be assigned to the well until all interests have been consolidated (by communitization, unitization, forced-pooling, or otherwise) or until a non-standard unit, eliminating such interests, has been approved by the Commission.



**CERTIFICATION**

I hereby certify that the information contained herein is true and complete to the best of my knowledge and belief.

Name J. B. Taylor  
 Position Superintendent  
 Company Coquina Oil Corporation  
 Date November 17, 1972

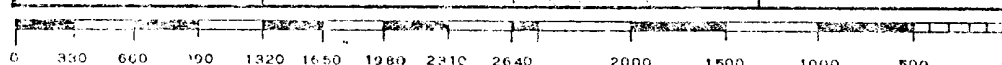
I hereby certify that the well location shown on this plat was plotted from field notes of actual survey made by me or under my supervision, and that the same is true and correct to the best of my knowledge.

Date Surveyed  
**NOVEMBER 16, 1972**

Registered Professional Engineer and/or Land Surveyor

Max A. Schumann Jr.  
MAX A. SCHUMANN JR.

Certificate No. **1510**



COQUINA OIL CORPORATION  
FIVE MILE UNIT #1

Surface:     0 - 500'

Gel-Lime Slurry with 50 - 60 Viscosity. LCM as Needed.

Intermediate:     500' - 1300'

Same as Surface System

Long String:     1300' - 8400'

Fresh Water with 2% KCI, Low Solids

8400' - 8900'

Fresh Water with 2% KCI plus Soda Ash, Salt Gel and Flosal to  
Attain Following Properties:

Weight	9.0 - 9.2
Viscosity	45 - 55 SEC
Fluid Loss	10 ML or Less

LCM as Needed.

**RECEIVED**  
NOV 21 1972  
U. S. GEOLOGICAL SURVEY  
ARTESIA, NEW MEXICO

North

Reserve Pits

Burn pit

Steel Pits



Location 1980'FNL & 660'FEL  
Section 14, T18S R25E

Road to Location

200'

### LOCATION PLAT

RECEIVED

NOV 20 1972

U.S. GEOLOGICAL SURVEY  
ARTERIAL  
NEW MEXICO

This location plat and information is filed in connection with the application for approval of the drilling of the Coquina Oil Corporation No. 1 Filmore Unit, 1980'FNL & 660'FEL of Section 14, T18S R25E, Eddy County, New Mexico, an 8850 foot Morrow test.

This plat shows the size of the location, location of the well, steel, reserve and burn pits and the access road. The rotary rig will be rigged up with the V-door to the east which requires that the pipe rack be placed east of the rig.

The water supply will be either trucked or by pipeline from a well located  $2\frac{1}{2}$  miles southeast of the location.

The waste material will be put in the reserve pits and disposed of in accordance with the regulations. No camp or air strip is planned at this time.

Restoration of the surface will be in accordance with the regulations.

If production is obtained as gas well with some condensate is anticipated. No flow lines or tank battery site can be planned at this time.

The surface at the location is flat, covered with soil, the vegetation is is native grass, tickle grass and some brush.

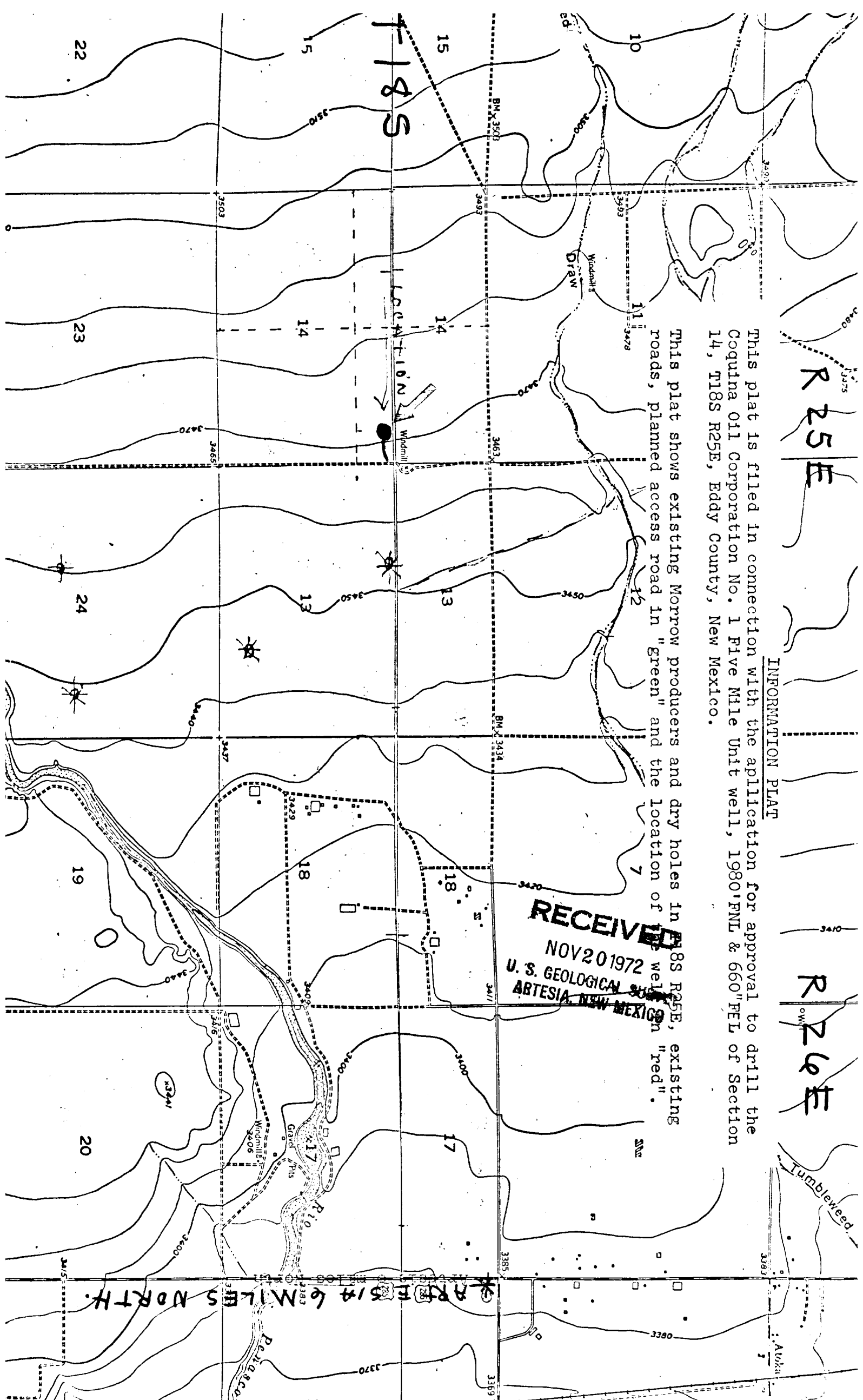
Blowout preventer equipment: Hydraulic series 900 with blank and  $4\frac{1}{2}$ " rams.

29th

This plat shows existing Morrow producers and dry holes in #18S R4E, existing roads, planned access road in "green" and the location of the well on "red".

of the well

**RECEIVED**  
NOV 20 1972  
U. S. GEOLOGICAL SURVEY  
ARTESIA, NEW MEXICO



# THE BLOWOUT PREVENTER STACK

3,000 psi Working Pressure

