

UNITED STATES  
DEPARTMENT OF THE INTERIOR  
GEOLOGICAL SURVEY

## APPLICATION FOR PERMIT TO DRILL, DEEPEN, OR PLUG BACK

## 1a. TYPE OF WORK

DRILL ☒DEEPEN ☐PLUG BACK ☐

## b. TYPE OF WELL

OIL  
WELL ☒GAS  
WELL ☐OTHER ☐SINGLE  
ZONE ☐MULTIPLE  
ZONE ☐

## 2. NAME OF OPERATOR

Newmont Oil Company

RECEIVED

## 3. ADDRESS OF OPERATOR

P. O. Box 1305, Artesia, New Mexico 88210

## 4. LOCATION OF WELL (Report location clearly and in accordance with any State requirements.)

At surface

990' FSL &amp; 1310' FEL Section 3, T18S, R29E

At proposed prod. zone

Same

O. C. C.  
ARTESIA, OFFICE

## 14. DISTANCE IN MILES AND DIRECTION FROM NEAREST TOWN OR POST OFFICE\*

## 15. DISTANCE FROM PROPOSED\*

LOCATION TO NEAREST  
PROPERTY OR LEASE LINE, FT.  
(Also to nearest drlg. line, if any)18. DISTANCE FROM PROPOSED LOCATION\*  
TO NEAREST WELL, DRILLING, COMPLETED,  
OR APPLIED FOR, ON THIS LEASE, FT.

## 16. NO. OF ACRES IN LEASE

## 19. PROPOSED DEPTH

2665'

17. NO. OF ACRES ASSIGNED  
TO THIS WELL

## 20. ROTARY OR CABLE TOOLS

Rotary

## 21. ELEVATIONS (Show whether DF, RT, GR, etc.)

## 22. APPROX. DATE WORK WILL START\*

## 23.

## PROPOSED CASING AND CEMENTING PROGRAM

SIZE OF HOLE	SIZE OF CASING	WEIGHT PER FOOT	SETTING DEPTH	QUANTITY OF CEMENT
10 3/4"	8 5/8"	24#	300'	80 sks cement
7 7/8"	4 1/2"	9.5#	2665'	Circulate or 500 sacks

Drill unorthodox location (Case No. 4903) approved by the NMOC, February 21, 1973.  
Production will be to a centralized tank battery.

Fresh water from our system will be used to drill to approximately 2550' and fresh water  
mud from this point to T.D. Cuttings will be disposed of in pit.

NOTE.....Road plat, flowline plat and layout of rig and equipment attached.

RECEIVED  
FEB 27 1973  
U. S. GEOLOGICAL SURVEY  
ARTESIA, NEW MEXICO

IN ABOVE SPACE DESCRIBE PROPOSED PROGRAM: If proposal is to deepen or plug back, give data on present productive zone and proposed new productive zone. If proposal is to drill or deepen directionally, give pertinent data on subsurface locations and measured and true vertical depths. Give blowout preventer program, if any.

## 24.

SIGNED

TITLE

Superintendent

DATE

2/26/73

(This space for Federal or State office use)

PERMIT NO.

APPROVAL DATE

MAR 7 1973

DISTRICT ENGINEER

APPROVED BY

TITLE

DATE

MAR 7 1973

CONDITIONS OF APPROVAL, IF ANY:

\*See Instructions On Reverse Side

N MEXICO OIL CONSERVATION COMMISS'  
WELL LOCATION AND ACREAGE DEDICATION PLAT

Form C-102  
Supersedes C-128  
Effective 1-1-65

All distances must be from the outer boundaries of the Section.

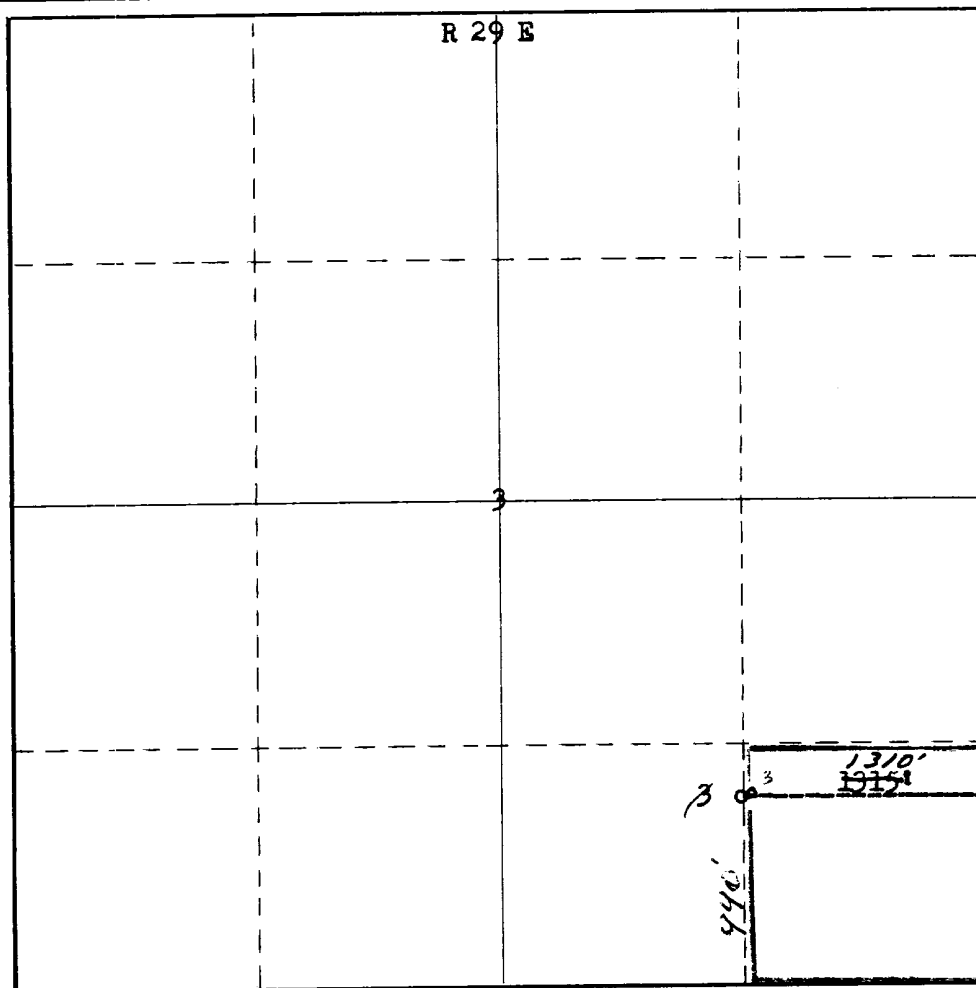
Operator <b>NEWMONT OIL COMPANY</b>			Lease <b>G-4 Sd.</b>		Well No. <b>3 * 10*</b>
Unit Letter <b>P</b>	Section <b>3</b>	Township <b>18 south</b>	Range <b>29 East</b>	County <b>Eddy</b>	
Actual Footage Location of Well: <b>990</b> feet from the <b>South</b> line and <b>1310'</b> <b>1515 East</b> feet from the <b>East</b> line					
Ground Level Elev. <b>3503</b>	Producing Formation	Pool	Dedicated Acreage: Acres		

1. Outline the acreage dedicated to the subject well by colored pencil or hachure marks on the plat below.
2. If more than one lease is dedicated to the well, outline each and identify the ownership thereof (both as to working interest and royalty).
3. If more than one lease of different ownership is dedicated to the well, have the interests of all owners been consolidated by communitization, unitization, force-pooling, etc?

☐ Yes ☐ No If answer is "yes," type of consolidation \_\_\_\_\_

If answer is "no," list the owners and tract descriptions which have actually been consolidated. (Use reverse side of this form if necessary.) \_\_\_\_\_

No allowable will be assigned to the well until all interests have been consolidated (by communitization, unitization, forced-pooling, or otherwise) or until a non-standard unit, eliminating such interests, has been approved by the Commission.



CERTIFICATION

I hereby certify that the information contained herein is true and complete to the best of my knowledge and belief.

Name *Ernest J. McLoughlin*  
Position *Office Mgr.*

Company

Date

I hereby certify that the well location shown on this plat was plotted from field notes of actual survey made by me or under my supervision, and that the same is true and correct to the best of my knowledge and belief.

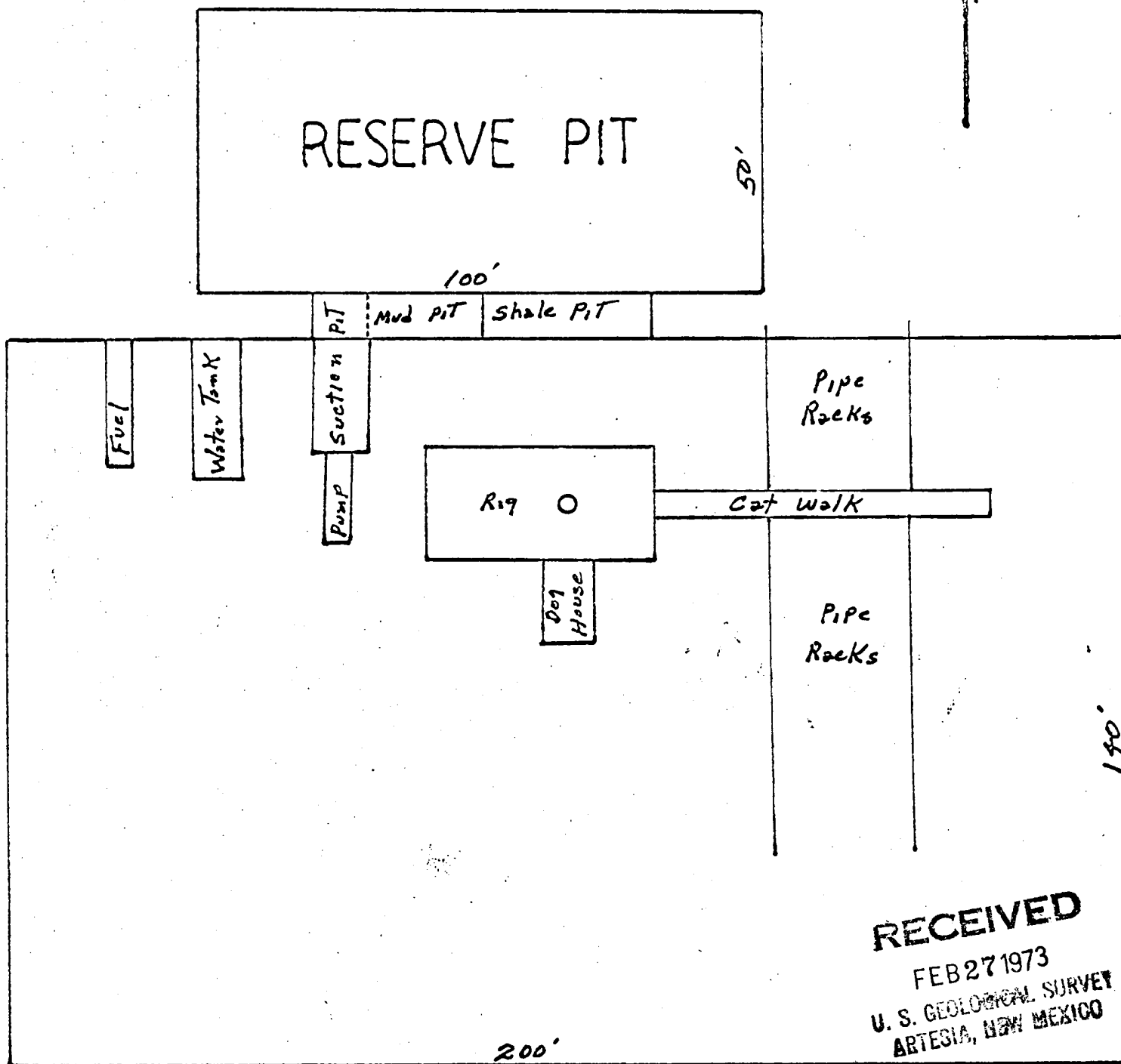
Date Surveyed

**February 28th, 1973**

Registered Professional Engineer and/or Land Surveyor

*James H. Brown*  
Certificate No. **542**

PROPOSED LOCATION LAYOUT FOR 9-3



**RECEIVED**  
 FEB 27 1973  
 U. S. GEOLOGICAL SURVEY  
 ARTESIA, NEW MEXICO

Shaffer 10" Series 900 Type B B.O.P. with 4 1/2" pipe rams and blanks. Hydraulic operated 6,000# test, 3000# WOP, or equivalent.

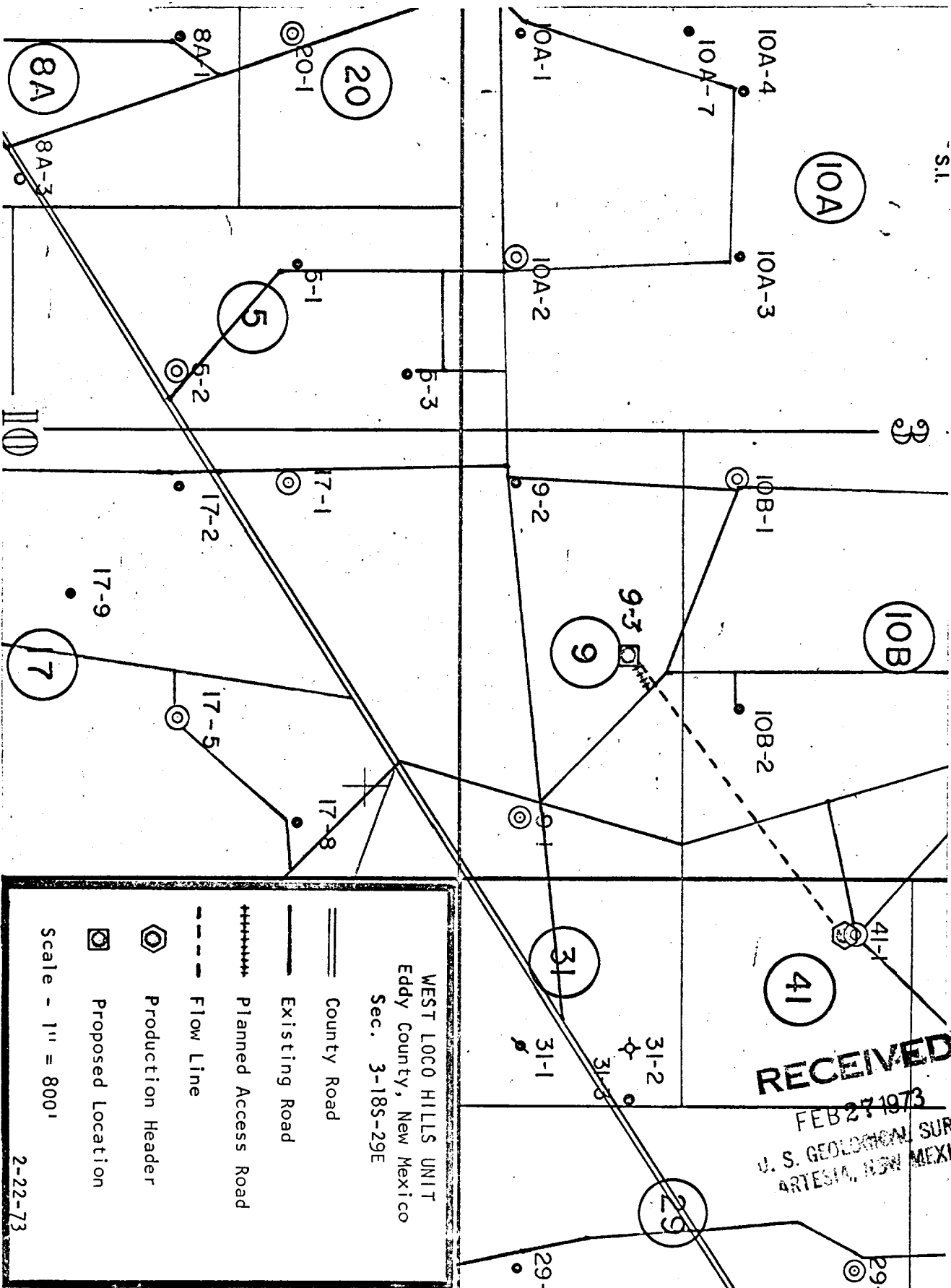
Sketch "B"

DEVELOPMENT PLAN FOR SURFACE USE

1. Existing roads see Sketch "A".
2. Planned access roads see Sketch "A".
3. Location of wells see Sketch "A".
4. Lateral roads to wells locations see Sketch "A".
5. Location of tank batteries and flowlines see Sketch "A".
6. Locations and types of water supply. (Fresh water from injection system).
7. Methods for handling waste disposal (Solids to central tank battery pit, produced water to injection system).
8. Location of camps. None
9. Location of airstrips. None
10. Location layout to include position of the rig, mud tanks, reserve pits, burn pits, pipe racks, etc., see Sketch "B".
11. Plans for restoration of the surface as required by appropriate agency.
12. Any other information which the Approving Official considers essential to his assessment of the impact on the environment will be furnished.
13. Mud and B.O.P. program see Sketch "B".

**RECEIVED**  
FEB 27 1973  
U. S. GEOLOGICAL SURVEY  
ARTESIA, NEW MEXICO

S.L.



**RECEIVED**  
FEB 27 1973  
U. S. GEOLOGICAL SURVEY  
ARTESIA, NEW MEXICO

Sketch "A"

30-1015-20816

6-27-73

Compensated Form Bone Log  
1170 - 2671

Dical Laterlog  
310 - 2658

Gamma Ray Log  
2300 - 2640

Ogild - 35515

Prep - 19472

Post - 39520



Oxford

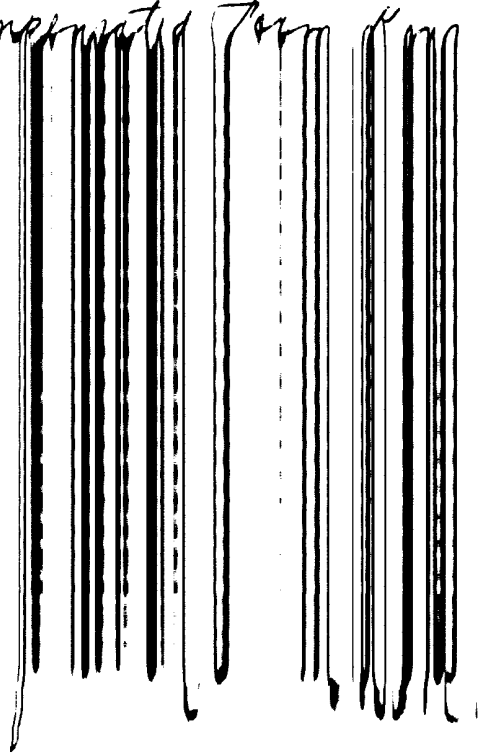
STOCK No. 773 1/3

MADE IN U. S. A.

30-1015-20816

6.27-73

Consolidated Form



Log

1170-2671

Ognd - 55575  
Prop - 12473  
Pool - 39520

Dual Laterlog  
510-2658

Gamma Ray Log  
2300-645



Oxford

STOCK No. 773 $\frac{1}{3}$

MADE IN U.S.A.

30-1015-20816

6-27-73

Compensated Form Bone Log  
1170 - 5671

Ogild - 55515  
Prop - 12473  
Post - 39520

Becal Laterlog  
310 - 2658

Gamma Ray Log  
2300 - 7645

  
**Oxford**  
STOCK No. 773 1/3

MADE IN U. S. A.

IT IS THEREFORE ORDERED: <sup>Case 4963</sup>  
<sup>Order R 4483 2-21-73</sup>

(1) That the applicant, Newmont Oil Company, is hereby authorized to drill a producing oil well at an unorthodox location 990 feet from the South line and 1310 feet from the East line of Section 3, Township 18 South, Range 29 East, NMPM, Loco Hills Pool, Eddy County, New Mexico.

(2) That the Secretary-Director of the Commission may approve such additional producing and injection wells at orthodox and unorthodox locations within the West Loco Hills Grayburg No. 4 Sand Unit Area as may be necessary to complete an efficient production and injection pattern, provided said wells are drilled no closer than 330 feet to the outer boundary of said unit area nor closer than ten feet to any quarter-quarter section or subdivision inner boundary, and provided that the application therefor has been filed in accordance with the provisions of Rule 701-B of the Commission Rules and Regulations.