

NEW MEXICO OIL CONSERVATION COMMISSION
WELL LOCATION AND ACREAGE DEDICATION PLAT

Form C-102
Supersedes C-128
Effective 1-1-65

All distances must be from the outer boundaries of the Section.

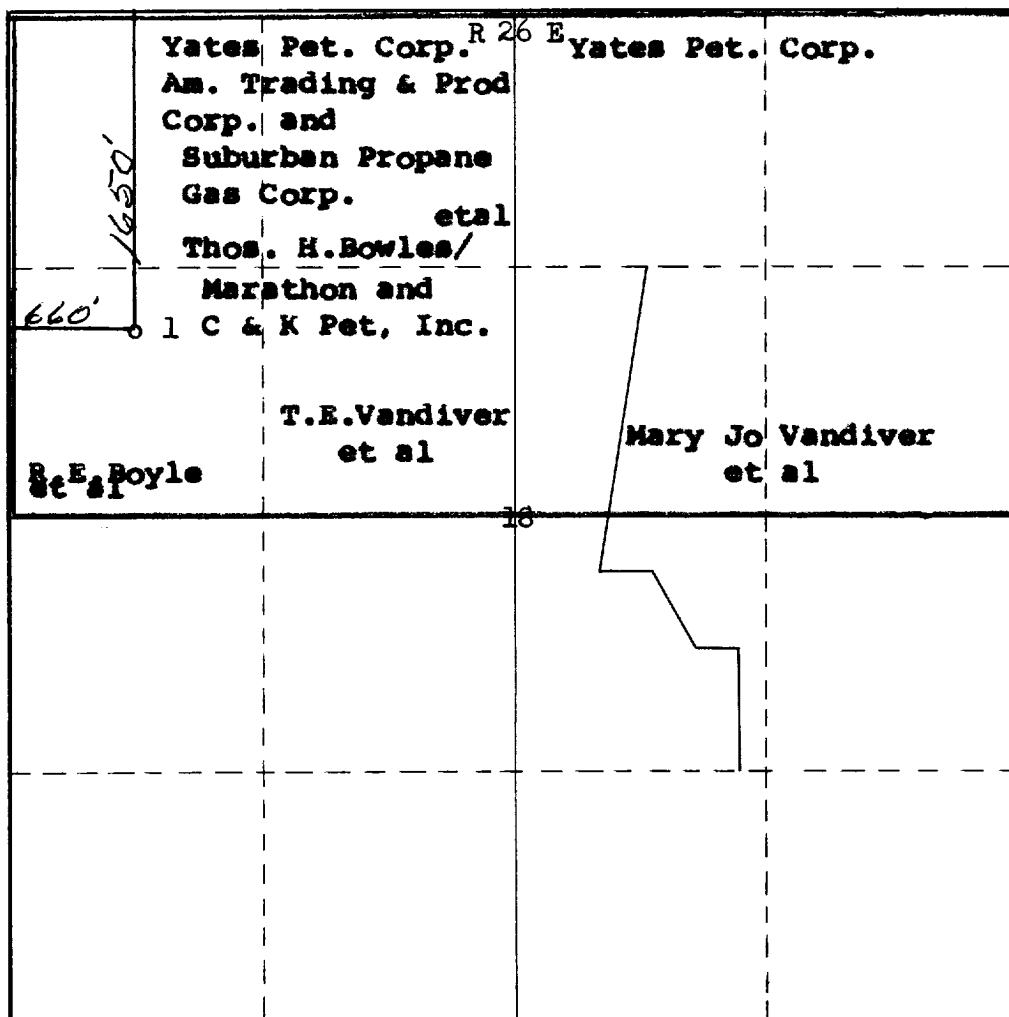
Operator YATES PETROLEUM CORPORATION			Lease VANDIVER XXX CN Com		Well No. 1
Unit Letter E	Section 18	Township 18 South	Range 26 East	County Eddy	
Actual Footage Location of Well: 1650 feet from the North line and 660 feet from the West line					
Ground Level Elev. 3430	Producing Formation Morrow	Pool Atoka West (Morrow)		Dedicated Acreage: 320 Acres	

1. Outline the acreage dedicated to the subject well by colored pencil or hatchure marks on the plat below.
2. If more than one lease is dedicated to the well, outline each and identify the ownership thereof (both as to working interest and royalty).
3. If more than one lease of different ownership is dedicated to the well, have the interests of all owners been consolidated by communitization, unitization, force-pooling, etc?

☒ Yes ☐ No If answer is "yes," type of consolidation **Communitization**

If answer is "no," list the owners and tract descriptions which have actually been consolidated. (Use reverse side of this form if necessary.) _____

No allowable will be assigned to the well until all interests have been consolidated (by communitization, unitization, forced-pooling, or otherwise) or until a non-standard unit, eliminating such interests, has been approved by the Commission.



CERTIFICATION

I hereby certify that the information contained herein is true and complete to the best of my knowledge and belief.

Eddie M. Mahford
Eddie M. Mahford
Engineer

Position

Yates Pet. Corporation

Company

5-15-73

Date

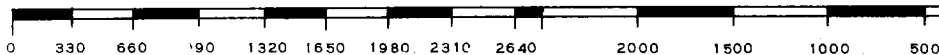
I hereby certify that the well location shown on this plat was plotted from field notes of actual surveys made by me or under my supervision, and that the same is true and correct to the best of my knowledge and belief.

Date Surveyed

May 5th, 1973

Registered Professional Engineer
and/or Land Surveyor

James H. Brown
Certificate No. **542**



RECEIVED

MAY 21 1973

D. B. G.
ARTERIAL