

NEW MEXICO OIL CONSERVATION COMMISSION
WELL LOCATION AND ACREAGE DEDICATION PLAT

Form C-102
Supersedes C-128
Effective 1-4-65

All distances must be from the outer boundaries of the Section

DAVID FASKEN			Lease ARMSTRONG #5		Well No. 1
L	5	18 S.	26 E.	County Eddy	
1980		South	660	feet from the West line	
3397	Morrow	Pool	Wildcat	Dedicated Acreage: 320 Acres	

Outline the acreage dedicated to the subject well by colored pencil or hatchure marks on the plat below.

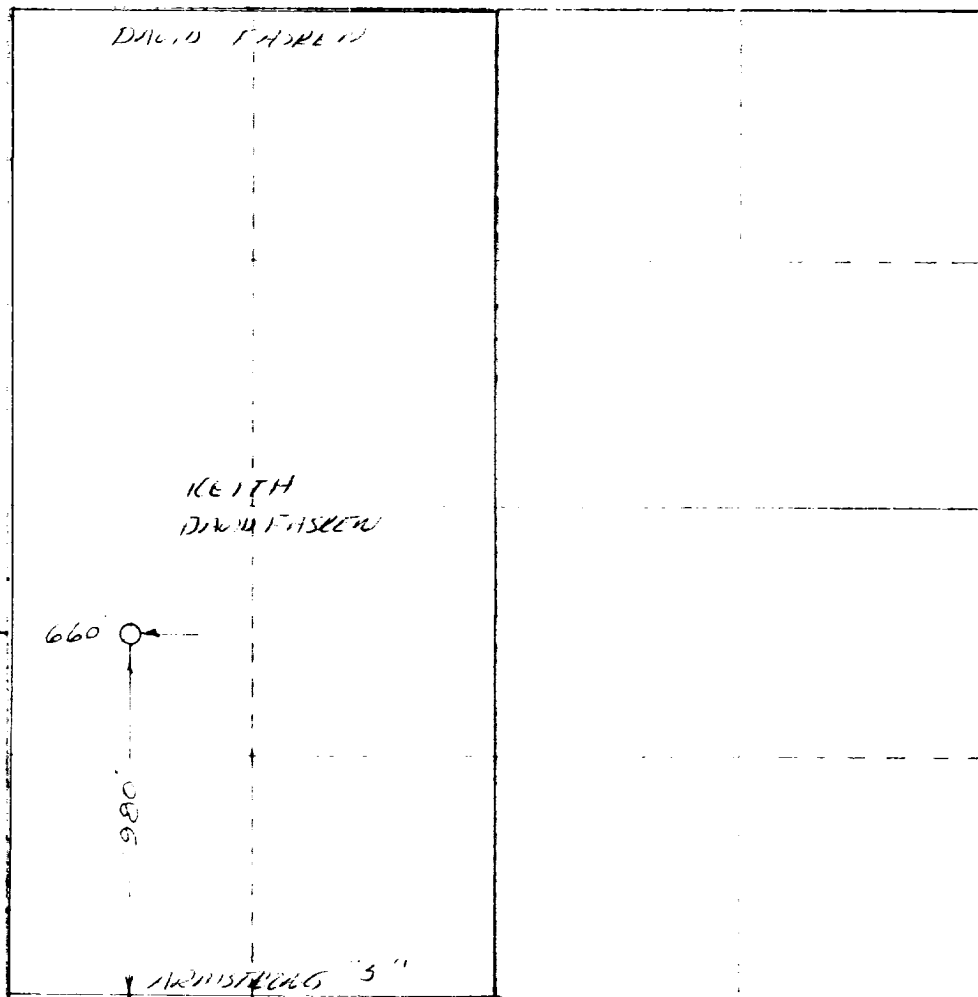
If more than one lease is dedicated to the well, outline each and identify the ownership thereof (both as to working interest and royalty).

If more than one lease of different ownership is dedicated to the well, have the interests of all owners been consolidated by communitization, unitization, force pooling, etc?

☒ Yes ☐ No If answer is "Yes," type of consolidation Pooling From Leases

If answer is "No," list the owners and tract descriptions which have actually been consolidated. (Use reverse side of this form if necessary)

Unitizable will be assigned to the well until all interests have been consolidated (by communitization, unitization, force pooling, or otherwise) or until a non-standard unit, eliminating such interests, has been approved by the Commis-



CERTIFICATION

I hereby certify that the information contained herein is true and complete to the best of my knowledge and belief.

Name James B. Henry

Position Agent

Company David Fasken

Date May 29, 1973

I hereby certify that the well location shown on this plat was plotted from field notes of actual surveys made by me or under my supervision, and that the same is true and correct to the best of my knowledge and belief.

Date Surveyed

Registered Professional Engineer and/or Surveyor

Certification No. L JONES 3840

STATE OF NEW MEXICO SURVEYOR