

UNITED STATES
DEPARTMENT OF THE INTERIOR

GEOLOGICAL SURVEY

APPLICATION FOR PERMIT TO DRILL, DEEPEN, OR PLUG BACK

1a. TYPE OF WORK

DRILL ☒DEEPEN ☐PLUG BACK ☐

b. TYPE OF WELL

OIL
WELL ☐GAS
WELL ☒OTHER ☐SINGLE
ZONE ☐MULTIPLE
ZONE ☐

2. NAME OF OPERATOR

Yates Petroleum Corporation

DEC 28 1973

3. ADDRESS OF OPERATOR

207 South 4th Street- Artesia, NM 88210

4. LOCATION OF WELL (Report location clearly and in accordance with any State requirements.)

At surface

660' FNL & 1980' FEL of Sec. 8-18S-25E

At proposed prod. zone

14. DISTANCE IN MILES AND DIRECTION FROM NEAREST TOWN OR POST OFFICE*

7 miles SW of Artesia, New Mexico

15. DISTANCE FROM PROPOSED*
LOCATION TO NEAREST
PROPERTY OR LEASE LINE, FT.
(Also to nearest drlg. unit line, if any)

660'

16. NO. OF ACRES IN LEASE

18. DISTANCE FROM PROPOSED LOCATION*
TO NEAREST WELL, DRILLING, COMPLETED,
OR APPLIED FOR, ON THIS LEASE, FT.

First Well

19. PROPOSED DEPTH

Approx. 8600'

17. NO. OF ACRES ASSIGNED
TO THIS WELL

320

20. ROTARY OR CABLE TOOLS

Rotary

21. ELEVATIONS (Show whether DF, RT, GR, etc.)

3595' GR

22. APPROX. DATE WORK WILL START*

Dec. 27, 1973

23.

PROPOSED CASING AND CEMENTING PROGRAM

SIZE OF HOLE	SIZE OF CASING	WEIGHT PER FOOT	SETTING DEPTH	QUANTITY OF CEMENT
17½"	13-3/8"	48#	Approx. 220'	125 sx - circulate
12½ or 11"	8-5/8"	24#	" 1070'	375 sx - circulate
7-7/8"	5½" or 4½"	11.6 & 10.5 10.5 & 9.5	TD	150 sx or as determined

Propose to drill and test the Morrow and intermediate horizons. Approx. 220' of surface pipe will be set to shut off caving gravel beds, and 8-5/8" will be set 100' below Artesian zone.

Mud Program: Gel & lost circulation material at surface to 1070', water to 6200', fosal and drispak w/2% KCL to TD.

BOP Program: Hydril & BOP's will be installed on 8-5/8" casing, pipe rams and hydril tested daily, blind rams on top of Yellow Jacket test prior to drilling Wolfcamp.

IN ABOVE SPACE DESCRIBE PROPOSED PROGRAM: If proposal is to deepen or plug back, give data on present productive zone and proposed new productive zone. If proposal is to drill or deepen directionally, give pertinent data on subsurface locations and measured and true vertical depths. Give blowout preventer program, if any.

24.

SIGNED

TITLE

Engineer

DATE

11-30-73

(This space for Federal or State office use)

PERMIT NO.

APPROVAL DATE

DEC 21 1973

APPROVED BY

TITLE DISTRICT ENGINEER

DATE

SUBJECT TO ATTACHED DEEP WELL CONTROL

REQUIREMENTS DATED

6-25-73

DECLARED WATER BASIN

CEMENT BEHIND

CASING MUST BE CIRCULATED

THIS APPROVAL IS RESCINDED IF OPERATIONS
ARE NOT COMMENCED WITHIN 3 MONTHS.

4/12-31-73

*See Instructions On Reverse Side

NEW MEXICO OIL CONSERVATION COMMISSION
WELL LOCATION AND ACREAGE DEDICATION PLAT

Form C-102
Supersedes C-128
Effective 1-1-65

All distances must be from the outer boundaries of the Section.

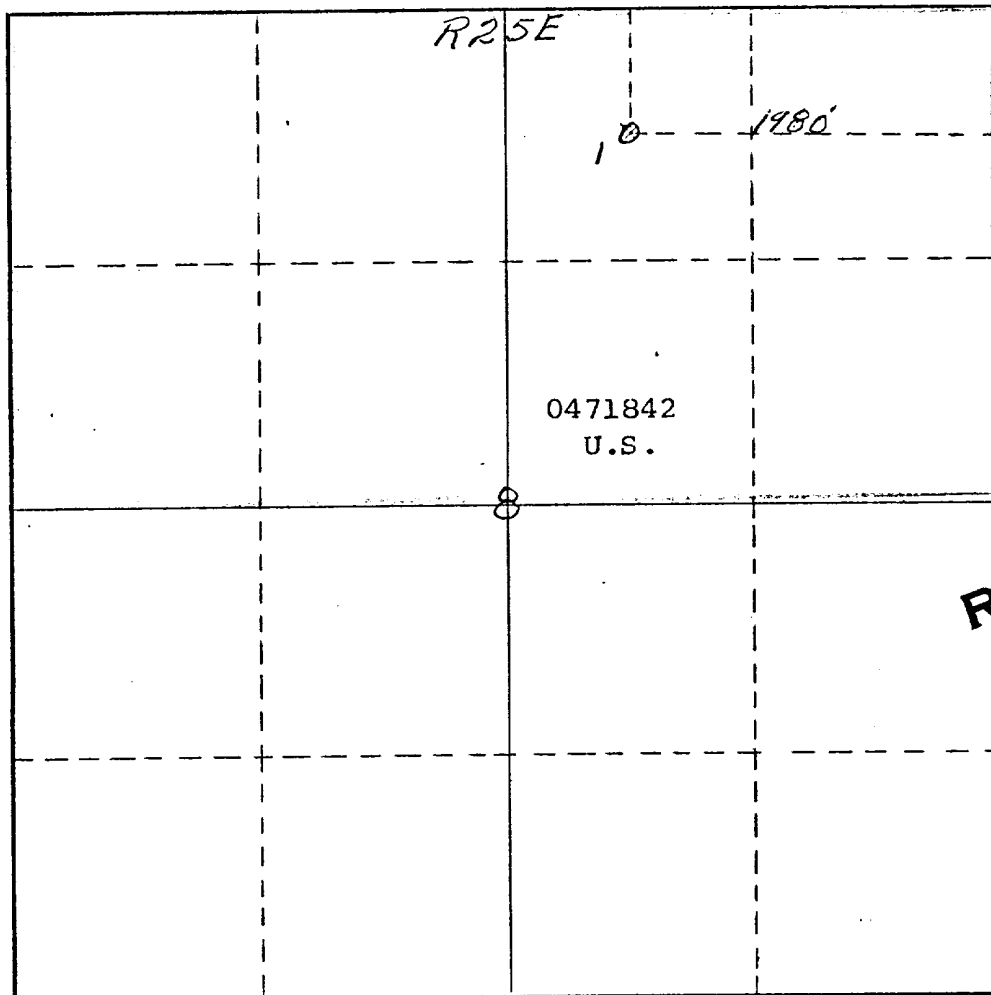
Operator <i>Yates Petroleum Corporation</i>			Lease <i>Federal/CZ</i>		Well No. <i>1</i>
Unit Letter <i>B</i>	Section <i>8</i>	Township <i>18 South</i>	Range <i>25 East</i>	County <i>Eddy</i>	
Actual Footage Location of Well: <i>660</i> feet from the <i>North</i> line and <i>1980</i> feet from the <i>East</i> line					
Ground Level Elev. <i>3575</i>	Producing Formation <i>Morrow</i>		Pool <i>Wind at Richard Knob</i>		Dedicated Acreage: <i>320</i> Acres

1. Outline the acreage dedicated to the subject well by colored pencil or hachure marks on the plat below.
2. If more than one lease is dedicated to the well, outline each and identify the ownership thereof (both as to working interest and royalty).
3. If more than one lease of different ownership is dedicated to the well, have the interests of all owners been consolidated by communitization, unitization, force-pooling, etc?

☐ Yes ☐ No If answer is "yes," type of consolidation _____

If answer is "no," list the owners and tract descriptions which have actually been consolidated. (Use reverse side of this form if necessary.) _____

No allowable will be assigned to the well until all interests have been consolidated (by communitization, unitization, forced-pooling, or otherwise) or until a non-standard unit, eliminating such interests, has been approved by the Commission.



CERTIFICATION

I hereby certify that the information contained herein is true and complete to the best of my knowledge and belief.

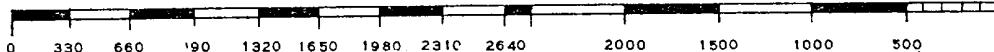
Eddie M. Mahfood

Name
Eddie M. Mahfood
Position
Engineer
Company
Yates Pet. Corporation
Date
11-30-73

RECEIVED
NOV 30 1973
U.S. GEOLOGICAL SURVEY
ARTESIA, NEW MEXICO
JAMES H. ELLIOTT

Date Surveyed
November 28th 1973
Registered Professional Engineer
and/or Land Surveyor

James H. Elliott
Certificate No. *542*

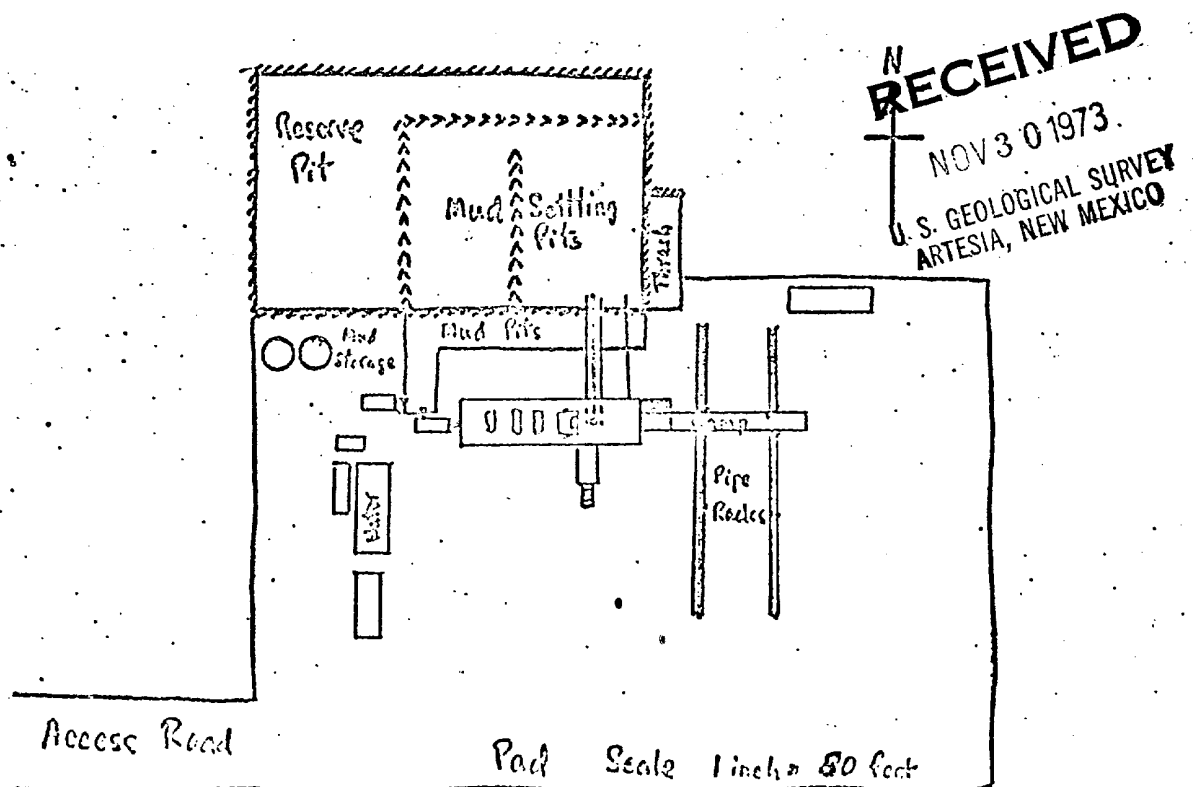


YATES PETROLEUM CO. LOCATION
Federal "CZ" No. 1 - Unit B
Section 8-18N-25E - Eddy County, New Mexico

Development plan for surface use to accompany, "Applications to Drill Onshore Oil, Gas, or Geothermal Steam Wells on Public Domain and acquired Federal Lands:"

1. Existing roads. See attached Topo Map. Existing roads are caliche and maintained or watered as needed
2. Planned access roads. See attached Topo Map. East-west road with cattle-guard at fence crossing, minimum disturbance and good drainage
3. Location of wells. See attached Topo Map - standard location
4. Lateral roads to wells locations. See attached Topo map - Ranch roads may be utilized where feasible in future development plans.
5. Location of tank batteries and flowlines. See attached Topo map - tank battery west of well on North side of access road.
6. Locations and types of water supply. Water to be trucked from water wells in the Eagle Creek Field.
7. Methods for handling waste disposal. Pits for mud. Separate pit for trash and engine oil.
8. Location of camps N.A.
9. Location of airstrips. N. A.
10. Location layout to include position of the rig, mud tanks, reserve pits, burn pits, pipe racks, etc. See Sketch below
11. Plans for restoration of the surface. If dry hole will erect marker, level pits, restore ground to near original. If producer will fence & level pits.
12. Any other information which the Approving Official considers essential to his assessment of the impact on the environment. Greasewood & tumble weed minimal prairie grass; caliche and rocky outcrop allows minimum soil disturbance, maximum dust control.

The affected Federal and State surface managing agencies shall have access to or, if feasible, may be provided with copies of such development.



Submitted by:

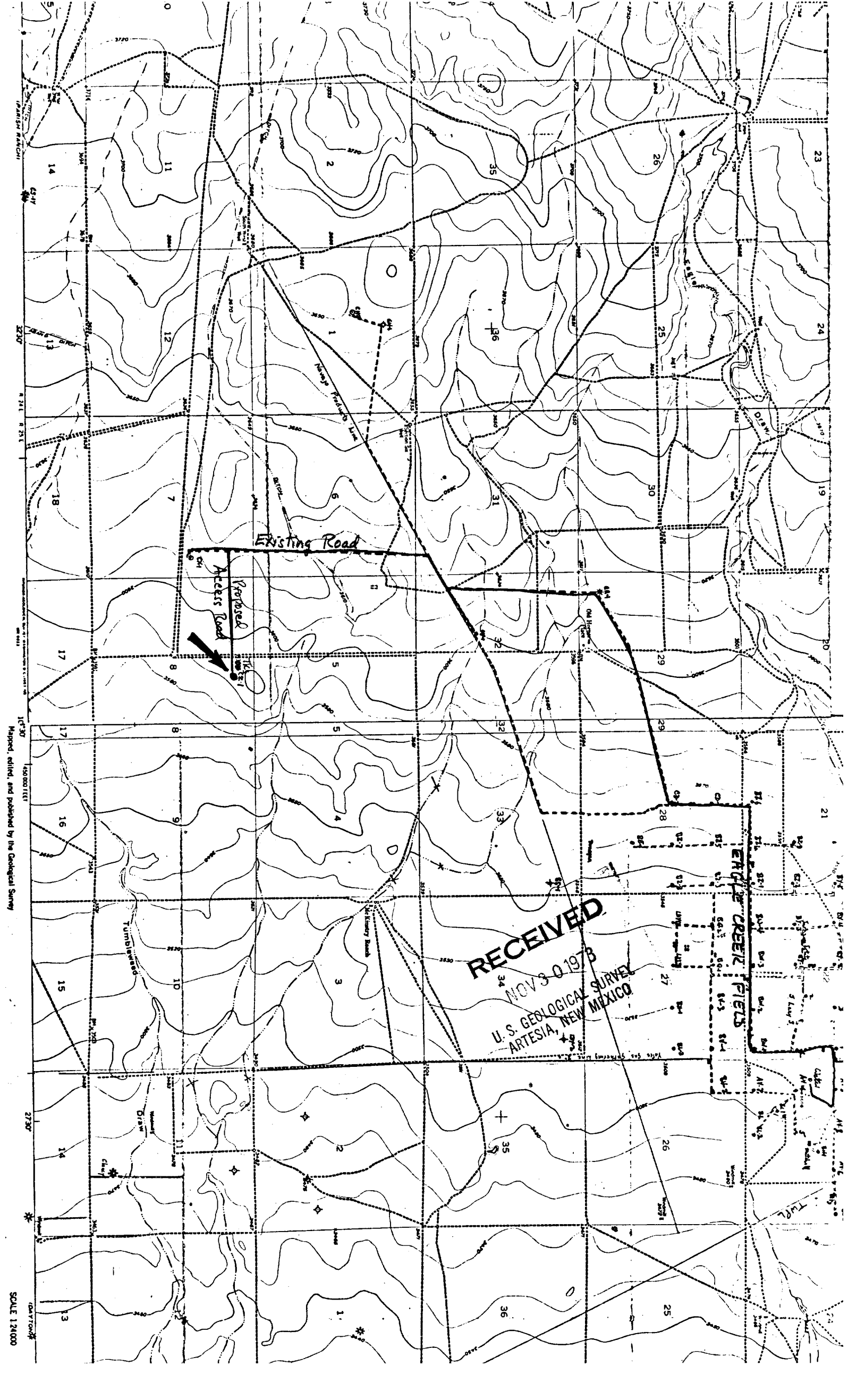
Yates Petroleum Corporation

BY Eddie M. Mahfood
Eddie M. Mahfood -Engineer

Approved by:

U. S. Geological Survey

BY _____



RECEIVED
NOV 30 1973
U.S. GEOLOGICAL SURVEY
ARTESIA, NEW MEXICO

EDGE CREEK FIELDS

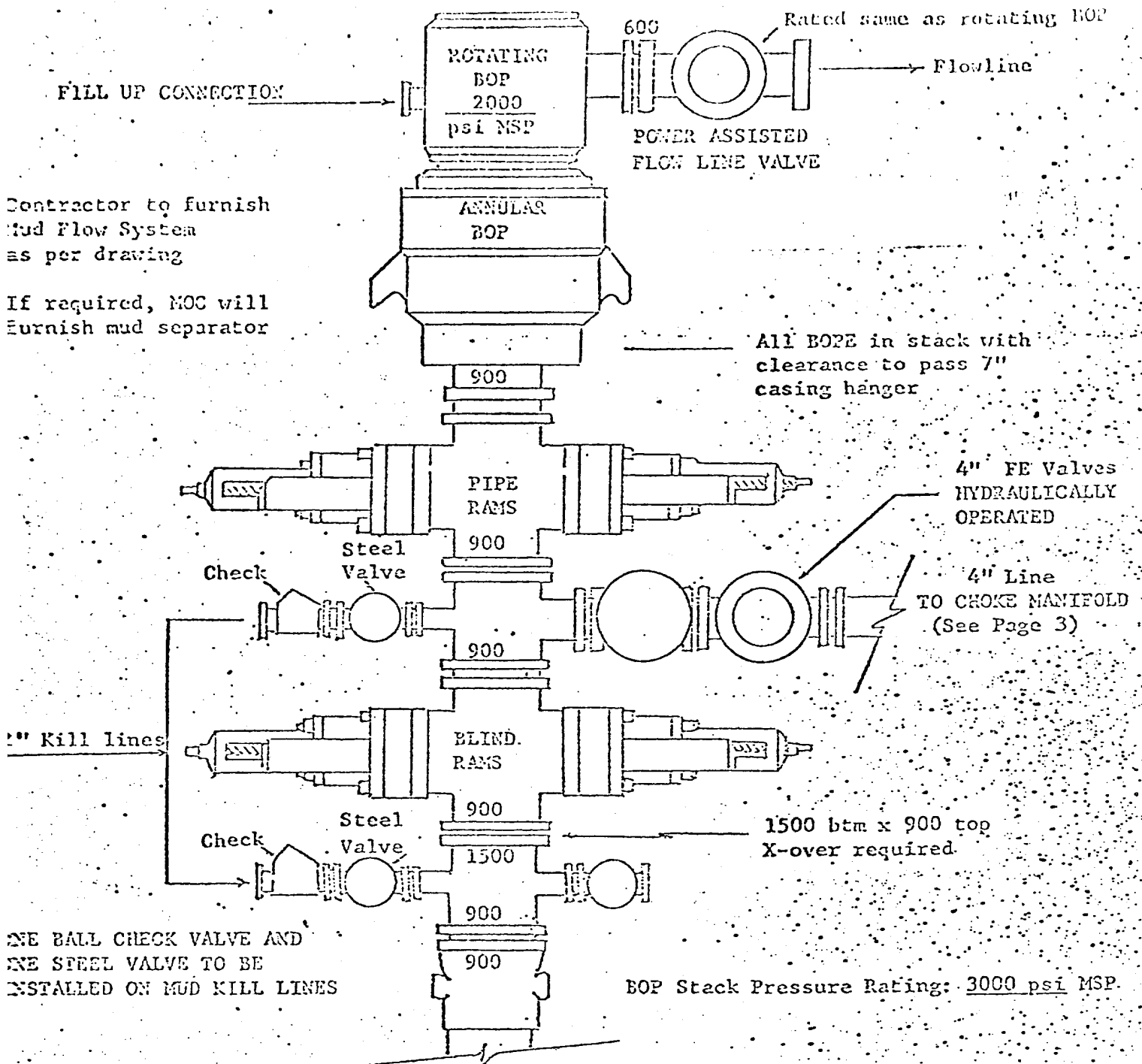
Existing Road

Proposed
Access Road



Maped, edited, and published by the Geological Survey

SCALE 1:24000



THE FOLLOWING CONSTITUTE MINIMUM BLOWOUT PREVENTER REQUIREMENTS

- ALL PREVENTERS TO BE HYDRAULICALLY OPERATED WITH SECONDARY MANUAL CONTROLS INSTALLED PRIOR TO DRILLING OUT FROM UNDER CASING.
- CHOKE OUTLET TO BE A MINIMUM OF 4" DIAMETER.
- KILL LINE TO BE OF ALL STEEL CONSTRUCTION OF 2" MINIMUM DIAMETER.
- OPENING BETWEEN RAMS TO BE FLANGED, STUDDED, OR CLAMPED.
- ALL CONNECTIONS FROM OPERATING MANIFOLDS TO PREVENTERS TO BE ALL STEEL HOSE OR TUBE A MINIMUM OF ONE INCH IN DIAMETER.
- THE AVAILABLE CLOSING PRESSURE SHALL BE AT LEAST 15% IN EXCESS OF THAT REQUIRED WITH SUFFICIENT VOLUME TO OPERATE THE B.O.P.'s.
- ALL CONNECTIONS TO AND FROM PREVENTER TO HAVE A PRESSURE RATING EQUIVALENT TO THAT OF THE B.O.P.'s.
- UPPER & LOWER KELLY COCK TO BE INSTALLED ON KELLY. USE MUD SCREEN IN LOWER VALVE.
- INSIDE BLOWOUT PREVENTER TO BE AVAILABLE ON RIG FLOOR.
- FINAL OPERATING CONTROLS - ONE LOCATED BY DRILLERS POSITION AND THE OTHER LOCATED A SAFE DISTANCE FROM THE RIG FLOOR.
- KILL LINE FOR EMERGENCY USE ONLY - NOT TO BE USED FOR FILL UP.
- STARTING VALVES FOR ALL CONNECTIONS IN DRILL STRING TO BE LOCATED ON RIG FLOOR.
- HOLE MUST BE KEPT FILLED ON TRIPS BELOW INTERMEDIATE CASING. OPERATOR NOT RESPONSIBLE FOR BLOWOUTS RESULTING FROM NOT KEEPING HOLE FULL.
- DEADPIPE PLUG MUST BE INSTALLED AND USED BELOW ZONE OF FIRST GAS INTRUSION, OR 10' AND 15' BELOW THE GUNN'S FIRST.

RECEIVED

DEC-3-1973

U.S. GEOLOGICAL SURVEY
ARTESIA, NEW MEXICO