

UNITED STATES
DEPARTMENT OF THE INTERIOR
GEOLOGICAL SURVEY

APPLICATION FOR PERMIT TO DRILL, DEEPEN, OR PLUG BACK

1a. TYPE OF WORK

DRILL ☒DEEPEN ☐PLUG BACK ☐

b. TYPE OF WELL

OIL
WELL ☒GAS
WELL ☐OTHER ☐SINGLE
ZONE ☐MULTIPLE
ZONE ☐

2. NAME OF OPERATOR

Yates Petroleum Corporation

3. ADDRESS OF OPERATOR

207 South 4th Street - Artesia, NM 88210

4. LOCATION OF WELL (Report location clearly and in accordance with any State requirements.)

At surface

2310' FNL & 480' FEL of Sec. 26-18S-25E

At proposed prod. zone

14. DISTANCE IN MILES AND DIRECTION FROM NEAREST TOWN OR POST OFFICE*

Approx. 10 South of Artesia, NM

JAN 10 1974

15. DISTANCE FROM PROPOSED*

LOCATION TO NEAREST

PROPERTY OR LEASE LINE, FT.

(Also to nearest drilg. unit line, if any)

330'

18. DISTANCE FROM PROPOSED LOCATION*

TO NEAREST WELL, DRILLING, COMPLETED,

OR APPLIED FOR, ON THIS LEASE, FT.

1140'

16. NO. OF ACRES IN LEASE

O. C. C.

19. PROPOSED WELL DEPTH

1500

17. NO. OF ACRES ASSIGNED
TO THIS WELL

40

20. ROTARY OR CABLE TOOLS

Rotary

21. ELEVATIONS (Show whether DF, RT, GR, etc.)

3467 GR

22. APPROX. DATE WORK WILL START*

When rig available

23.

PROPOSED CASING AND CEMENTING PROGRAM

SIZE OF HOLE	SIZE OF CASING	WEIGHT PER FOOT	SETTING DEPTH	QUANTITY OF CEMENT
14 OR 15"	10 3/4"	32.75#	Approx. 300'	Circulate
9 5/8"	7"	20#	" 1150'	Circulate
6 1/4"	4 1/2" or 5 1/2"	9.5# 15.5#	1500'	125 sx

Propose to drill Slaughter test to approximately 1500'. Surface casing will be set at approx. 300' to shut off gravel and shallow cavings; Intermediate casing will be set approx. 100' below Artesian Water zone.

Mud Program: FW gel & LCM, 45-65 vis from surface to 1150' or dry drill if unable to regain circulation; F.W. From 1150' to TD.

BOP Program: BOP's will be installed on intermediate casing, pipe rams tested daily. Blind rams on trips.

IN ABOVE SPACE DESCRIBE PROPOSED PROGRAM: If proposal is to deepen or plug back, give data on present productive zone and proposed new productive zone. If proposal is to drill or deepen directionally, give pertinent data on subsurface locations and measured and true vertical depths. Give blowout preventer program, if any.

24.

SIGNED

Edwin M. Walz

TITLE

Engineer

DATE

12-27-73

(This space for Federal or State office use)

PERMIT NO.

APPROVAL DATE

DECLARED WATER BASIN
1031CEMENT BEHIND THE
CASING MUST BE CIRCULATED
DATE 7-1-74NOTIFY USGS IN SUFFICIENT TIME TO
WITNESS CEMENTING THE CASING.APPROVED
JAN 10 1974
K. L. BEEKMAN
ACTING DISTRICT ENGINEERTHIS APPROVAL IS RESCINDED IF OPERATIONS
ARE NOT COMMENCED WITHIN 3 MONTHS.
APR 9 1974
*See Instructions On Reverse Side

NEW MEXICO OIL CONSERVATION COMMISSION
WELL LOCATION AND ACREAGE DEDICATION PLAT

Form C-102
Supersedes C-128
Effective 1-1-65

All distances must be from the outer boundaries of the Section.

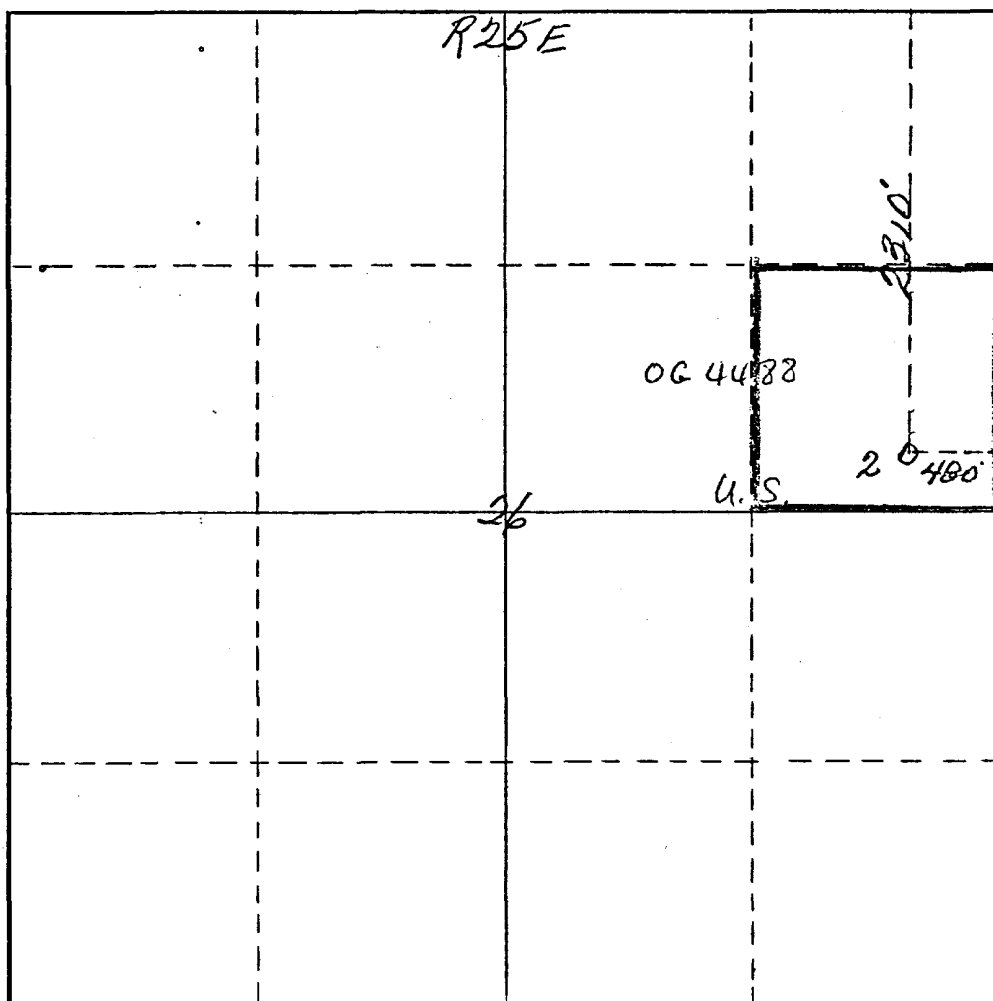
Operator <i>Yates Petroleum Corp</i>		Lease <i>Yates Federal</i>		Well No. <i>2</i>
Unit Letter <i>H</i>	Section <i>26</i>	Township <i>18 South</i>	Range <i>25 East</i>	County <i>Eddy</i>
Actual Footage Location of Well: <i>2310</i> feet from the <i>North</i> line and <i>480</i> feet from the <i>West</i> line				
Ground Level Elev. <i>3467</i>	Producing Formation <i>San Andres</i>	Pool <i>Penasco Draw (S.A., Yeso)</i>	Dedicated Acreage: <i>40</i> Acres	

1. Outline the acreage dedicated to the subject well by colored pencil or hachure marks on the plat below.
2. If more than one lease is dedicated to the well, outline each and identify the ownership thereof (both as to working interest and royalty).
3. If more than one lease of different ownership is dedicated to the well, have the interests of all owners been consolidated by communitization, unitization, force-pooling, etc?

☐ Yes ☐ No If answer is "yes," type of consolidation _____

If answer is "no," list the owners and tract descriptions which have actually been consolidated. (Use reverse side of this form if necessary.) _____

No allowable will be assigned to the well until all interests have been consolidated (by communitization, unitization, forced-pooling, or otherwise) or until a non-standard unit, eliminating such interests, has been approved by the Commission.



CERTIFICATION

I hereby certify that the information contained herein is true and complete to the best of my knowledge and belief.

Eddie M. Mahfood
Name
Eddie M. Mahfood

Position
Engineer

Company
Yates Pet. Corp

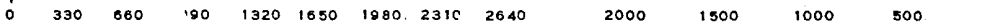
Date
12-27-73

RECEIVED
DEC 27 1973
U.S. GEOLOGICAL SURVEY
ARTESIA, NEW MEXICO
I hereby certify that the information shown on this plat is correct from field notes of actual surveys made by me or under my supervision, and that the same is true and correct to the best of my knowledge and belief.

James H. Brown
James H. Brown

Date Surveyed
December 21st 1973
Registered Professional Engineer
and/or Land Surveyor

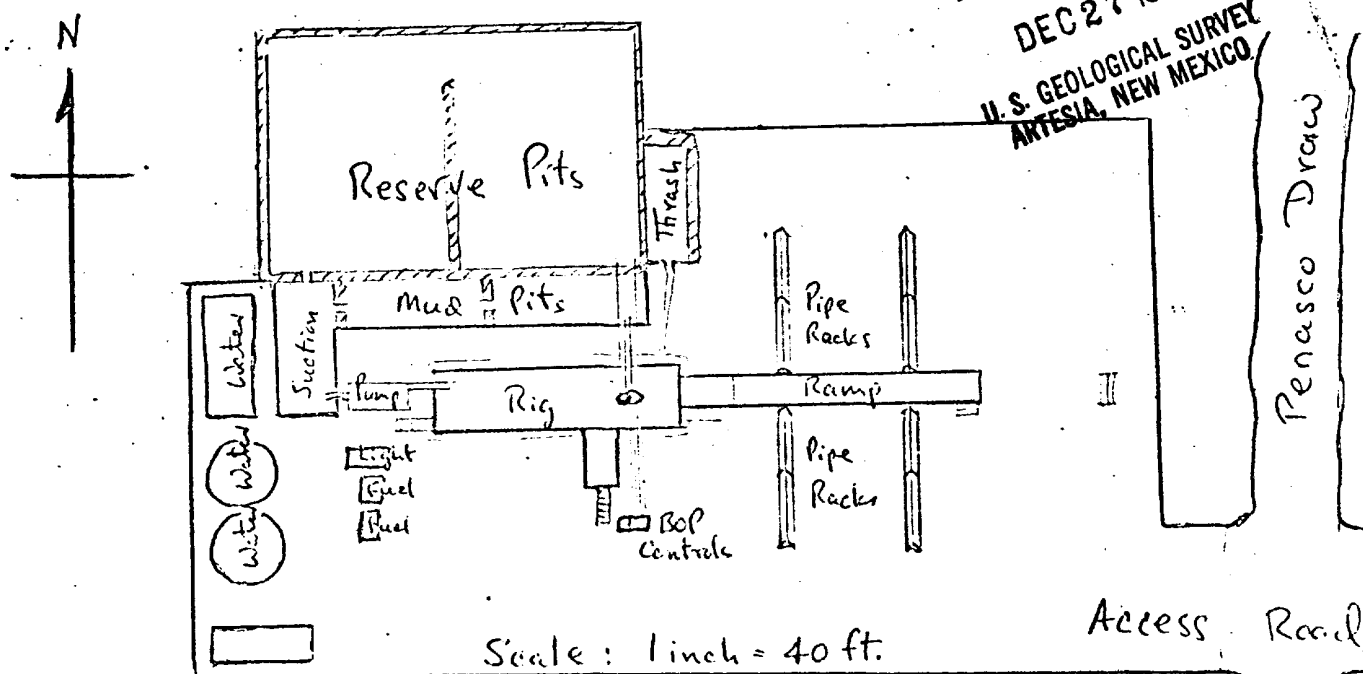
James H. Brown
Certificate No. *542*



Development plan for surface use to accompany, "Applications to Drill Onshore Oil, Gas, or Geothermal Steam Wells on Public Domain and acquired Federal Lands:"

1. Existing roads. See attached Topo Map. County roads and lease roads are maintained regularly or as needed.
2. Planned access roads. See attached Topo Map. Approximately 650 ft of new west from existing N-S County road and E-W lease road.
3. Location of wells. See attached Topo Map. This well to be a development well in our Penasco Draw (S.A.- Yeso) Field
4. Lateral roads to wells locations. See attached Topo Map. No new lateral roads needed.
5. Location of tank batteries and flowlines. See attached Topo Map. Flowline will be laid alongside access road and existing road to existing tank bttty.
6. Locations and types of water supply. See attached Topo Map. Source wtr. well and earthen tank in SE/4 of Section for drilling purposes.
7. Methods for handling waste disposal. See Sketch below. Engine oil & waste in thrash pit, mud in steel pits and reserve or settling pits.
8. Location of camps N.A.
9. Location of airstrips. N.A.
10. Location layout to include position of the rig, mud tanks, reserve pits, burn pits, pipe racks, etc. See Sketch below
11. Plans for restoration of the surface. Pits to be leveled or fenced as needed for producer. If dry hole, surface to be restored as near to orig.
12. Any other information which the Approving Official considers essential to his assessment of the impact on the environment. Location is on west bank (130 ft) from Penasco Draw. Tumble weed and greasewood

The affected Federal and State surface managing agencies shall have access to or, if feasible, may be provided with copies of such development.



Submitted by:

Yates Petroleum Corporation

BY Eddie M. Mahfood
Eddie M. Mahfood - Engineer

Approved by:

U. S. Geological Survey

BY _____

5-Mile Unit

14

Yandiver

13

Fisher
Penn 13

18

3409

3465

3470

3437

3440

3416

3441

23

Relay Station
Linek

24

Strawberry
Moran

19

3469

3450

3453

Windmill
3448

3439

3471

3462

AY-2

BA-1

BA-2

Windmill
3479

3469

Tank Bldg

AY-1

BA-1

BA-2

30

RECEIVED

DEC 27 1973

U.S. GEOLOGICAL SURVEY
ARTESIA, NEW MEXICO

Water
Source
Well

3480

3450

EXISTING

3469

3479

3480

3481

3482

3483

3484

3485

3486

3487

3488

3489

3490

3491

3492

3493

3494

3495

3496

3497

3498

3499

3500

3501

3502

3503

3504

3505

3506

3507

3508

3509

3510

3511

3512

3513

3514

3515

3516

3517

3518

3519

3520

3521

3522

3523

3524

3525

3526

3527

3528

3529

3530

3531

3532

3533

3534

3535

3536

3537

3538

3539

3540

3541

3542

3543

3544

3545

3546

3547

3548

3549

3550

3551

3552

3553

3554

3555

3556

3557

3558

3559

3560

3561

3562

3563

3564

3565

3566

3567

3568

3569

3570

3571

3572

3573

3574

3575

3576

3577

3578

3579

3580

3581

3582

3583

3584

3585

3586

3587

3588

3589

3590

3591

3592

3593

3594

3595

3596

3597

3598

3599

3600

3601

3602

3603

3604

3605

3606

3607

3608

3609

3610

3611

3612

3613

3614

3615

3616

3617

3618

3619

3620

3621

3622

3623

3624

3625

3626

3627

3628

3629

3630

3631

3632

3633

3634

3635

3636

3637

3638

3639

3640

3641

3642

3643

3644

3645

3646

3647

3648

3649

3650

3651

3652

3653

3654

3655

3656

3657

3658

3659

3660

3661

3662

3663

3664

3665

3666

3667

3668

3669

3670

3671

3672

3673

3674

3675

3676

3677

3678

3679

3680

3681

3682

3683

3684

3685

3686

3687

3688

3689

3690

3691

3692

3693

3694

3695

3696

3697

3698

3699

3700

3701

3702

3703

3704

3705

3706

3707

3708

3709

3710

3711

3712

3713

3714

3715

3716

3717

3718

3719

3720

3721

3722

3723

3724

3725

3726

3727

3728

3729

3730

3731

3732

3733

3734

3735

3736

3737

3738

3739

3740

3741

3742

3743

3744

3745

3746

3747

3748

3749

3750

3751

3752

3753

3754

3755

3756

3757

3758

3759

3760

3761

3762

3763

3764

3765

3766

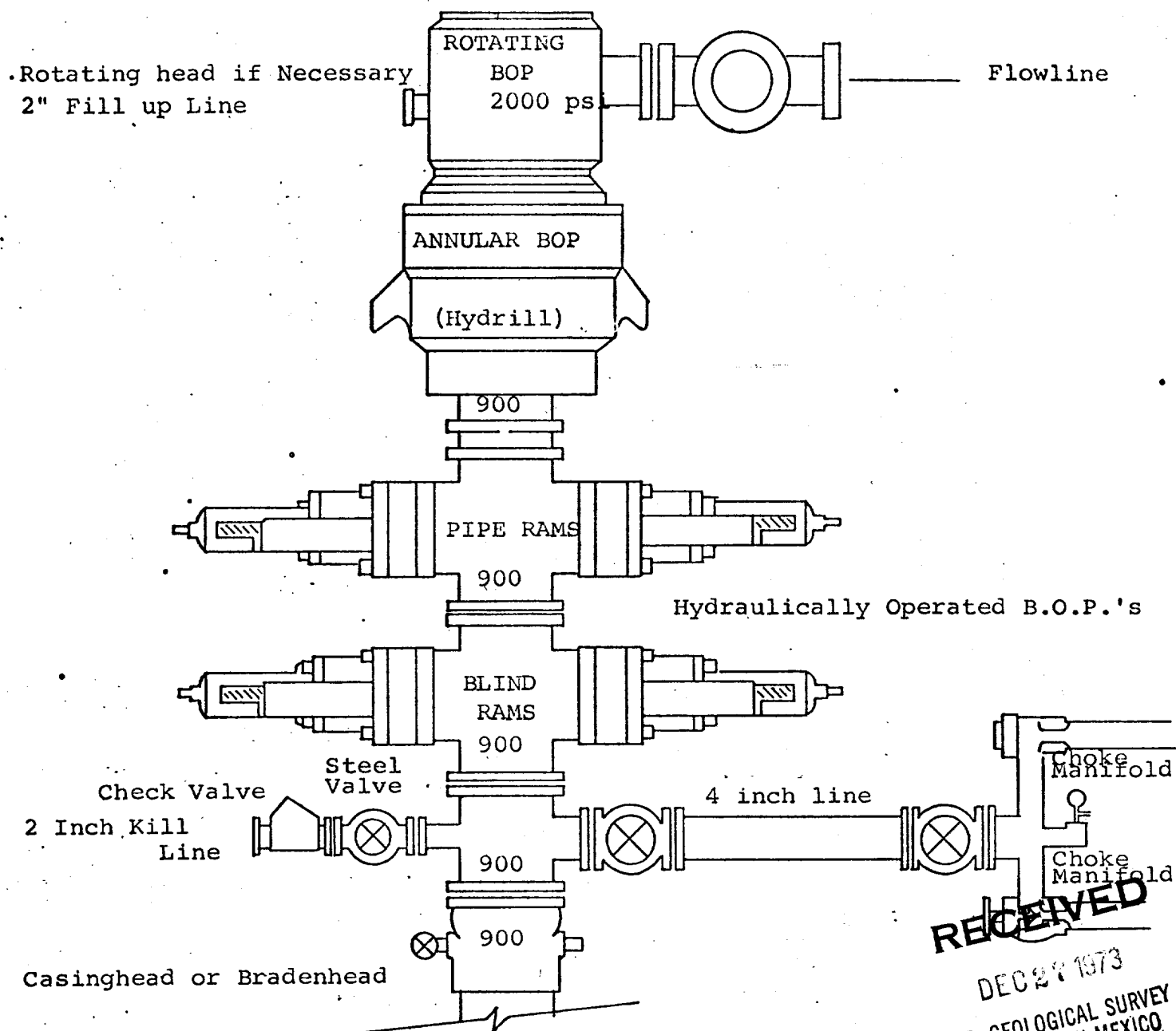
3767

3768

3769

3

DIAGRAMMATIC SKETCH OF 3000 PSI BOP ASSEMBLY



THE FOLLOWING CONSTITUTE MINIMUM BLOWOUT PREVENTER REQUIREMENTS

1. All preventers to be hydraulically operated with secondary manual controls installed prior to drilling out from under casing.
2. Choke outlet to be a minimum of 4" diameter.
3. Kill line to be of all steel construction of 2" minimum diameter.
4. All connections from operating manifolds to preventers to be all steel hole or tube a minimum of one inch in diameter.
5. The available closing pressure shall be at least 15% in excess of that required with sufficient volume to operate the B.O.P.'s.
6. All Connections to and from preventer to have a pressure rating equivalent to that of the B.O.P.'s.
7. Inside blowout preventer to be available on rig floor.
8. Operating controls located a safe distance from the rig floor.
9. Hole must be kept filled on trips below intermediate casing. Operator not responsible for blowouts resulting from not keeping hole full.
10. Drill pipe must be installed and used below zone of first gas intrusion.