

UNITED STATES  
DEPARTMENT OF THE INTERIOR  
GEOLOGICAL SURVEYSUBMIT IN TRIPPLICATE  
(Other instr. on reverse)Form approved.  
Budget Bureau No. 42-R1425.

30-015-21065

## APPLICATION FOR PERMIT TO DRILL, DEEPEN, OR PLUG BACK

## 1a. TYPE OF WORK

DRILL ☒DEEPEN ☐PLUG BACK ☐

## b. TYPE OF WELL

OIL  
WELL ☒GAS  
WELL ☐

OTHER

SINGLE  
ZONE ☐MULTIPLE  
ZONE ☐

## 2. NAME OF OPERATOR

Yates Petroleum Corporation

APR 22 1974

## 3. ADDRESS OF OPERATOR

207 South 4th Street - Artesia, NM 88210

## 4. LOCATION OF WELL (Report location clearly and in accordance with any State requirements)

At surface

2310' FNL &amp; 150' FEL of Sec. 26-18S-25E

At proposed prod. zone

## 14. DISTANCE IN MILES AND DIRECTION FROM NEAREST TOWN OR POST OFFICE\*

Approx. 10 miles south of Artesia, NM

## 10. DISTANCE FROM PROPOSED\*

LOCATION TO NEAREST  
PROPERTY OR LEASE LINE, FT.  
(Also to nearest drlg. unit line, if any)

330'

## 18. DISTANCE FROM PROPOSED LOCATION\*

TO NEAREST WELL, DRILLING COMPLETED,  
OR APPLIED FOR, ON THIS LEASE, FT.

810'

## 16. NO. OF ACRES IN LEASE

## 19. PROPOSED DEPTH

Approx. 1500'

17. NO. OF ACRES ASSIGNED  
TO THIS WELL

40

## 20. ROTARY OR CABLE TOOLS

Rotary

## 21. ELEVATIONS (Show whether DF, RT, GR, etc.)

3463' GR

## 22. APPROX. DATE WORK WILL START\*

As soon as approved

## 23.

## PROPOSED CASING AND CEMENTING PROGRAM

SIZE OF HOLE	SIZE OF CASING	WEIGHT PER FOOT	SETTING DEPTH	QUANTITY OF CEMENT
14½"	10-3/4"	30#	Approx. 300'	Circulate
9½"	7"	23#	" 1150'	Circulate
6¼"	5½" & 4½"	15.5 & 9.5#	" 1500'	125 sx

This application changes location previously applied for. New location is non-standard and was requested because of topography, approved by NMOCC Administrative Orders NSL 656 dated April 9, 1974. Propose a Slaughter Test to approx. 1500', surface casing at approx. 300' to shut off gravel and cavings, intermediate casing set set 100' below the Artesian water zone and a tapered string of production casing will be run if production is encountered.

BOP Program: - Install BOP's on intermediate casing and test daily.

Mud Program: - FW gel & LCM to 1150' or dry drill, FW to TD.

IN ABOVE SPACE DESCRIBE PROPOSED PROGRAM: If proposal is to deepen or plug back, give data on present productive zone and proposed new productive zone. If proposal is to drill or deepen directionally, give pertinent data on subsurface locations and measured and true vertical depths. Give blowout preventer program, if any.

## 24.

SIGNED

(This space for Federal or State office use)

TITLE

Engineer

DATE

4-18-74

PERMIT NO.

APPROVAL DATE

DECLARED WATER BASIN

TITLE

DATE

CEMENT BEHIND THE  
CASING MUST BE CIRCULATED

APPROVED BY

CONDITIONS OF APPROVAL, IF ANY:

N. L. BEEKHUIS

ACTING DISTRICT ENGINEER

THIS APPROVAL IS RESCINDED IF OPERATIONS  
ARE NOT COMMENCED WITHIN 3 MONTHS.

EXPIRES JUL 22 1974

\*See Instructions On Reverse Side

NOTIFY USGS IN SUFFICIENT TIME TO  
WITNESS CEMENTING THE 7" CASING.

NEW MEXICO OIL CONSERVATION COMMISSION  
WELL LOCATION AND ACREAGE DEDICATION PLAT

Form C-102  
Supersedes C-128  
Effective 1-1-65

All distances must be from the outer boundaries of the Section.

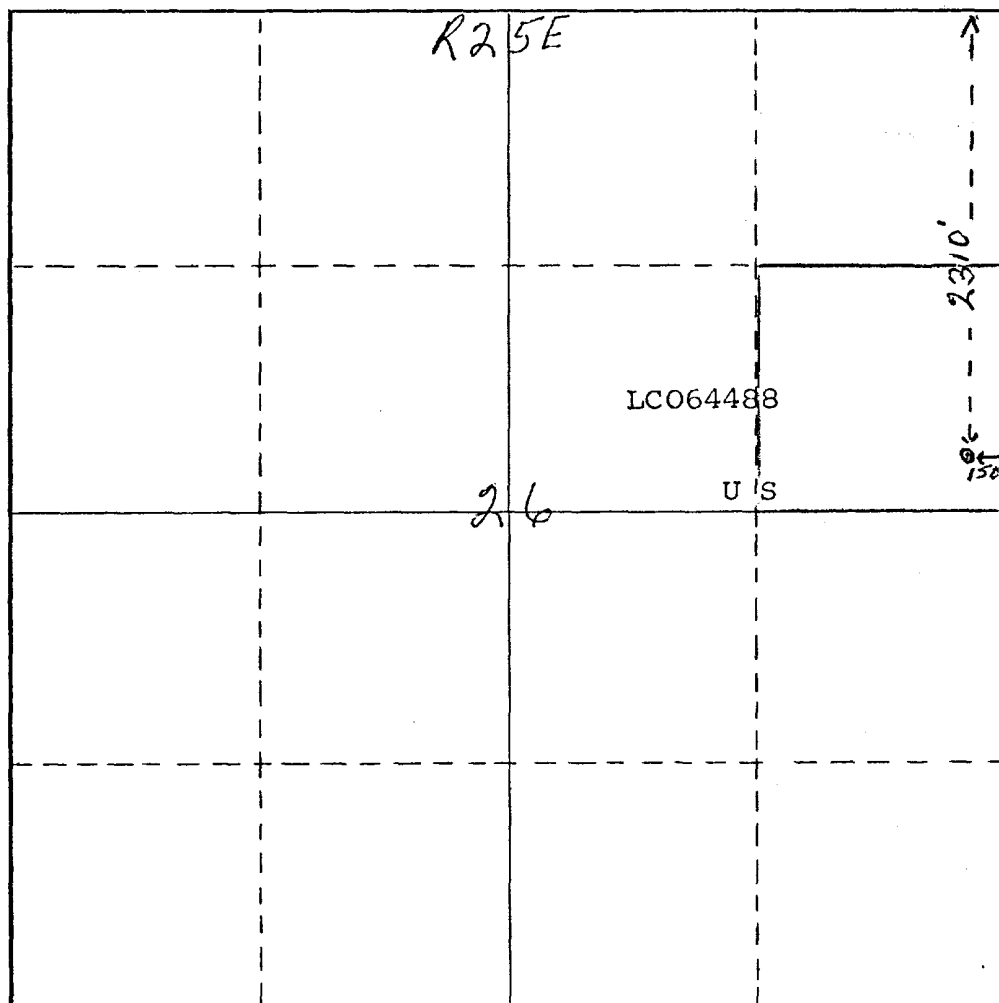
Operator <b>Yates Petroleum Corporation</b>			Lease <b>Yates Federal</b>		Well No. <b>2</b>
Unit Letter <b>H</b>	Section <b>26</b>	Township <b>18S</b>	Range <b>25E</b>	County <b>Eddy</b>	
Actual Footage Location of Well: <b>2310</b> feet from the <b>North</b> line and <b>150</b> feet from the <b>East</b> line					
Ground Level Elev. <b>3463'</b>	Producing Formation <b>San Andres</b>		Pool <b>Penasco Draw (S.A. Yeso)</b>		Dedicated Acreage: <b>40</b> Acres

1. Outline the acreage dedicated to the subject well by colored pencil or hachure marks on the plat below.
2. If more than one lease is dedicated to the well, outline each and identify the ownership thereof (both as to working interest and royalty).
3. If more than one lease of different ownership is dedicated to the well, have the interests of all owners been consolidated by communitization, unitization, force-pooling, etc?

☐ Yes ☐ No If answer is "yes," type of consolidation \_\_\_\_\_

If answer is "no," list the owners and tract descriptions which have actually been consolidated. (Use reverse side of this form if necessary.) \_\_\_\_\_

No allowable will be assigned to the well until all interests have been consolidated (by communitization, unitization, forced-pooling, or otherwise) or until a non-standard unit, eliminating such interests, has been approved by the Commission.



CERTIFICATION

I hereby certify that the information contained herein is true and complete to the best of my knowledge and belief.

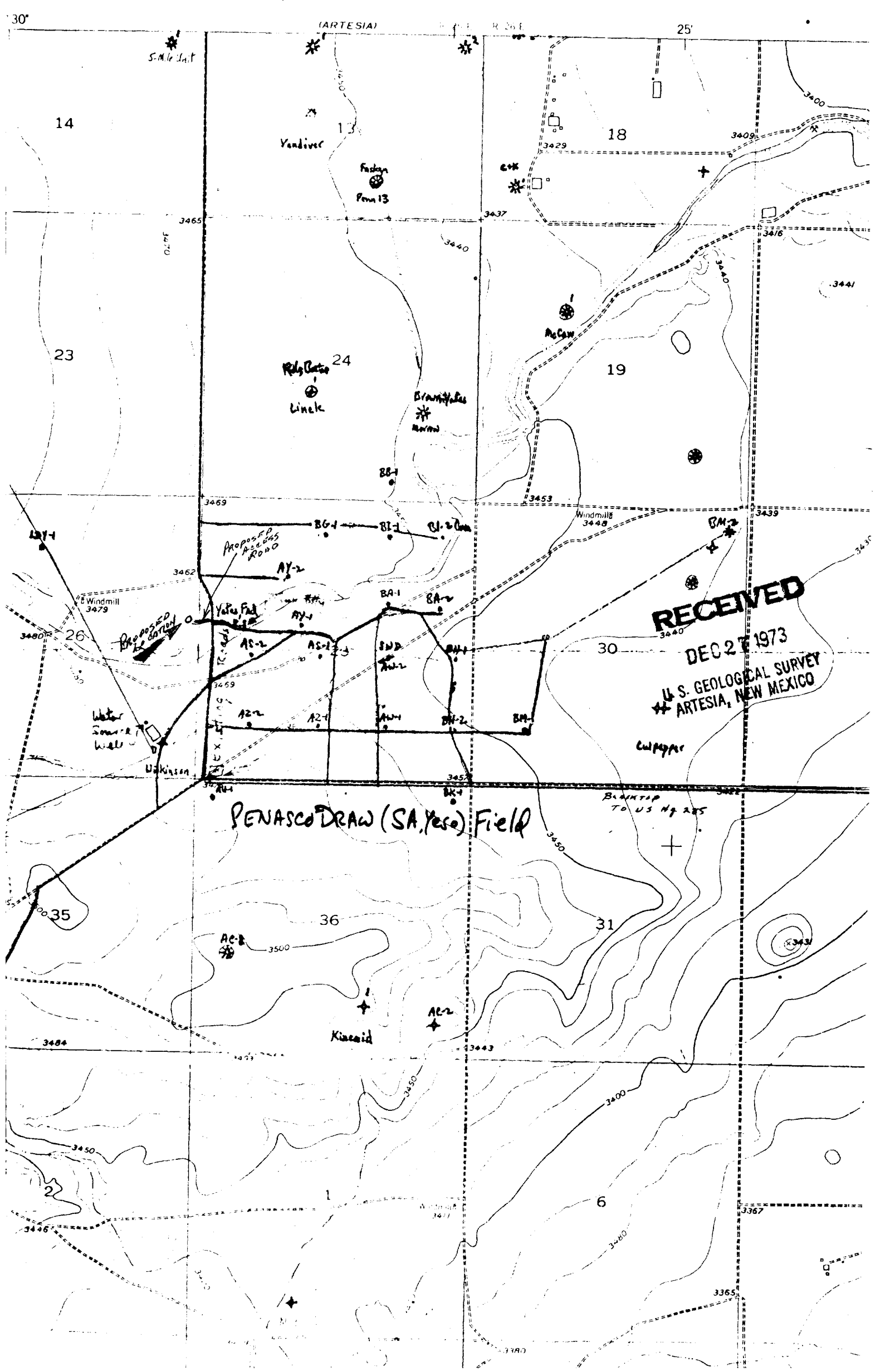
Name  
**Eddie M. Mahfood**  
Position  
**Engineer**  
Company  
**Yates Petroleum Corp.**  
Date  
**4-17-74**

I hereby certify that the well location shown on this plat was plotted from field notes of actual surveys made by me or under my supervision, and that the same is true and correct to the best of my knowledge and belief.

**4-17-74**  
Date Surveyed

Registered Professional Engineer and/or Land Surveyor  
**Eddie M. Mahfood**

Certificate No. **4605**



**RECEIVED**  
DEC 27 1973  
U.S. GEOLOGICAL SURVEY  
ARTESIA, NEW MEXICO

**PENASCO DRAW (SA Yaso) Field**