

NO. OF COPIES RECEIVED	5
DISTRIBUTION	
SANTA FE	1
FILE	1
U.S.G.S.	
LAND OFFICE	
OPERATOR	

NEW MEXICO OIL CONSERVATION COMMISSION

RECEIVED

OCT 22 1975

30-015-21076

Form C-101  
Revised 1-1-65

O. C. C.

ANTERIOR OFFICE

## APPLICATION FOR PERMIT TO DRILL, DEEPEN, OR PLUG BACK

1a. Type of Work		7. Unit Agreement Name	
b. Type of Well OIL WELL <input type="checkbox"/> GAS WELL <input checked="" type="checkbox"/> OTHER <input type="checkbox"/>		8. Farm or Lease Name <b>Bassett &amp; Birney</b>	
2. Name of Operator <b>Hondo Drilling Company</b>		9. Well No. <b>1</b>	
3. Address of Operator <b>Drawer 2516, Midland, Texas 79701</b>		10. Field and Pool, or Wildcat <b>Undesignated Atoka Penn</b>	
4. Location of Well UNIT LETTER <b>O</b> LOCATED <b>1650</b> FEET FROM THE <b>East</b> LINE AND <b>990</b> FEET FROM THE <b>South</b> LINE OF SEC. <b>26</b> TWP. <b>18S</b> RGE. <b>26E</b> NMPM		12. County <b>Eddy</b>	
21. Elevations (Show whether DF, RT, etc.) <b>3300' Gr.</b>		19. Proposed Depth <b>9500'</b>	19A. Formation <b>Morrow</b>
21A. Kind & Status Plug. Bond <b>Blanket</b>	21B. Drilling Contractor <b>Hondo Drilling Co.</b>	20. Rotary or C.T. <b>Rotary</b>	
22. Approx. Date Work will start <b>11-1-75</b>			

23.

## PROPOSED CASING AND CEMENT PROGRAM

SIZE OF HOLE	SIZE OF CASING	WEIGHT PER FOOT	SETTING DEPTH	SACKS OF CEMENT	EST. TOP
17 1/2"	13-3/8"	48	500'	Circ.	
12 1/4"	8-5/8"	24	1,500'	700 Sx.	
7-7/8"	5-1/2"	14 to 17	9,500'	550 Sx.	

Blowout Preventors: Hydraulic B.O.P. with 3" flanged choke manifold.

Size 10", Series: 900<sup>S</sup>, Make: Shaffer Type E, Number: 1 - Double.

One 80 gallon 3 valve accumulator.

APPROVAL VALID  
FOR 90 DAYS UNLESS  
DRILLING COMMENCED,

EXPIRES 1-22-76

IN ABOVE SPACE DESCRIBE PROPOSED PROGRAM; IF PROPOSAL IS TO DEEPEN OR PLUG BACK, GIVE DATA ON PRESENT PRODUCTIVE ZONE AND PROPOSED NEW PRODUCTIVE ZONE. GIVE BLOWOUT PREVENTER PROGRAM, IF ANY.

I hereby certify that the information above is true and complete to the best of my knowledge and belief.

Signed [Signature] Title **President** Date **October 21, 1975**

(This space for State Use)

APPROVED BY [Signature] TITLE **SUPERVISOR, DISTRICT II** DATE **OCT 22 1975**

CONDITIONS OF APPROVAL, IF ANY:

Cement must be circulated to  
surface behind 13 3/8" & 8 7/8" casing

Notify N.M.O.C.C. in sufficient  
time to witness cementing  
the 8 7/8" casing

MEXICO OIL CONSERVATION COMMISSION  
WELL LOCATION AND ACREAGE DEDICATION . LAT

Form C-102  
Supersedes C-128  
Effective 1-1-65

All distances must be from the outer boundaries of the Section.

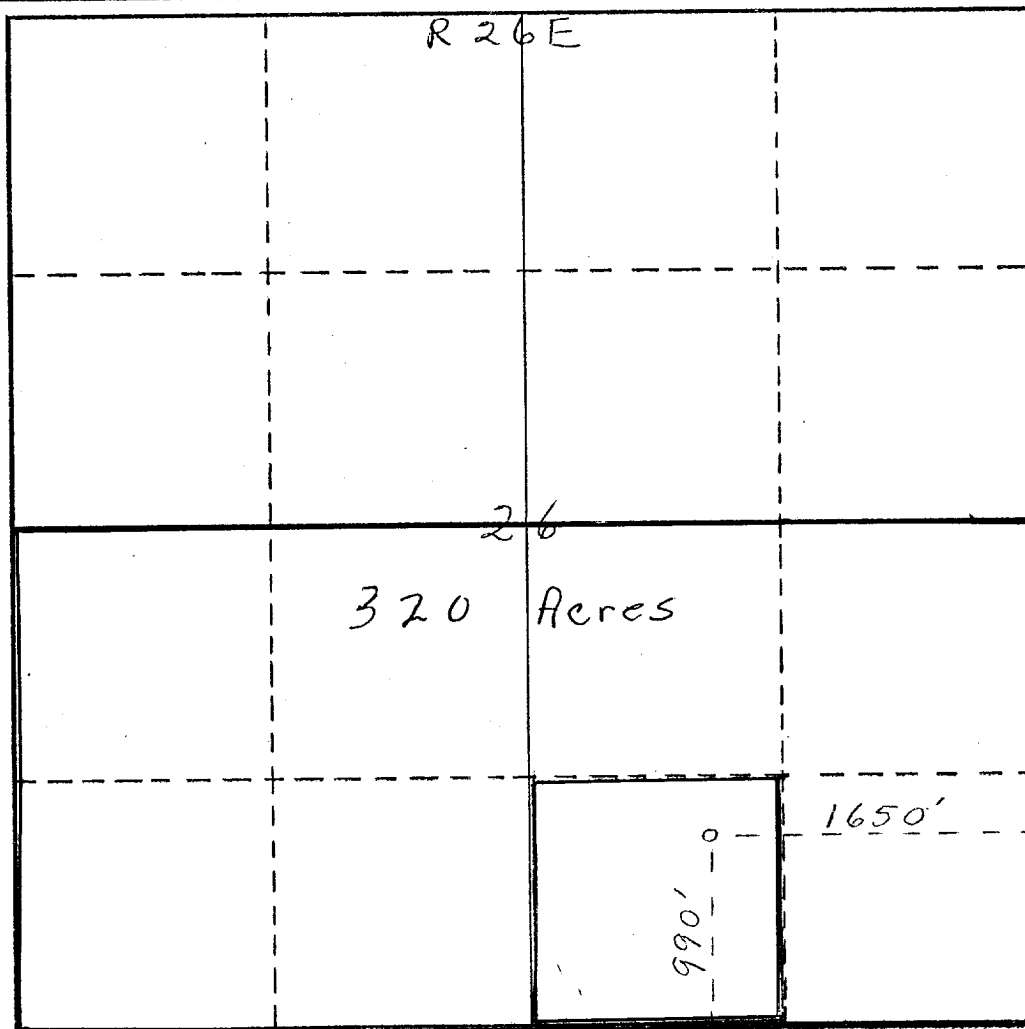
Operator <b>Hondo Drilling Company</b>			Lease <b>Bassett-Birney</b>		Well No. <b>1</b>
Unit Letter <b>0</b>	Section <b>26</b>	Township <b>18 South</b>	Range <b>26 East</b>	County <b>Eddy</b>	
Actual Footage Location of Well: <b>1650</b> feet from the <b>East</b> line and <b>990</b> feet from the <b>South</b> line					
Ground Level Elev. <b>3300</b>	Producing Formation <b>Morrow</b>		Pool <b>Wildcat</b>		Dedicated Acreage: <b>320</b> Acres

- Outline the acreage dedicated to the subject well by colored pencil or hachure marks on the plat below.
- If more than one lease is dedicated to the well, outline each and identify the ownership thereof (both as to working interest and royalty).
- If more than one lease of different ownership is dedicated to the well, have the interests of all owners been consolidated by communitization, unitization, force-pooling, etc?

☐ Yes ☐ No If answer is "yes," type of consolidation \_\_\_\_\_

If answer is "no," list the owners and tract descriptions which have actually been consolidated. (Use reverse side of this form if necessary.) \_\_\_\_\_

No allowable will be assigned to the well until all interests have been consolidated (by communitization, unitization, forced-pooling, or otherwise) or until a non-standard unit, eliminating such interests, has been approved by the Commission.



CERTIFICATION

I hereby certify that the information contained herein is true and complete to the best of my knowledge and belief.

*[Signature]*

Operator

Position

**Hondo Drilling Company**

Company

**October 16, 1975**

Date

I hereby certify that the well location shown on this plat was plotted from field notes of actual surveys made by me or under my supervision, and that the same is true and correct to the best of my knowledge and belief.

Date Surveyed

**January 10, 1974**

Registered Professional Engineer and/or Land Surveyor

*[Signature]*

Certificate No.

**542**

0 330 660 990 1320 1650 1980 2310 2640 2000 1500 1000 500