

NEW MEXICO OIL CONSERVATION COMMISSION
WELL LOCATION AND ACREAGE DEDICATION PLAT

Form O-122
Supersedes O-128
Effective 1-1-65

All distances must be from the outer boundaries of the Section

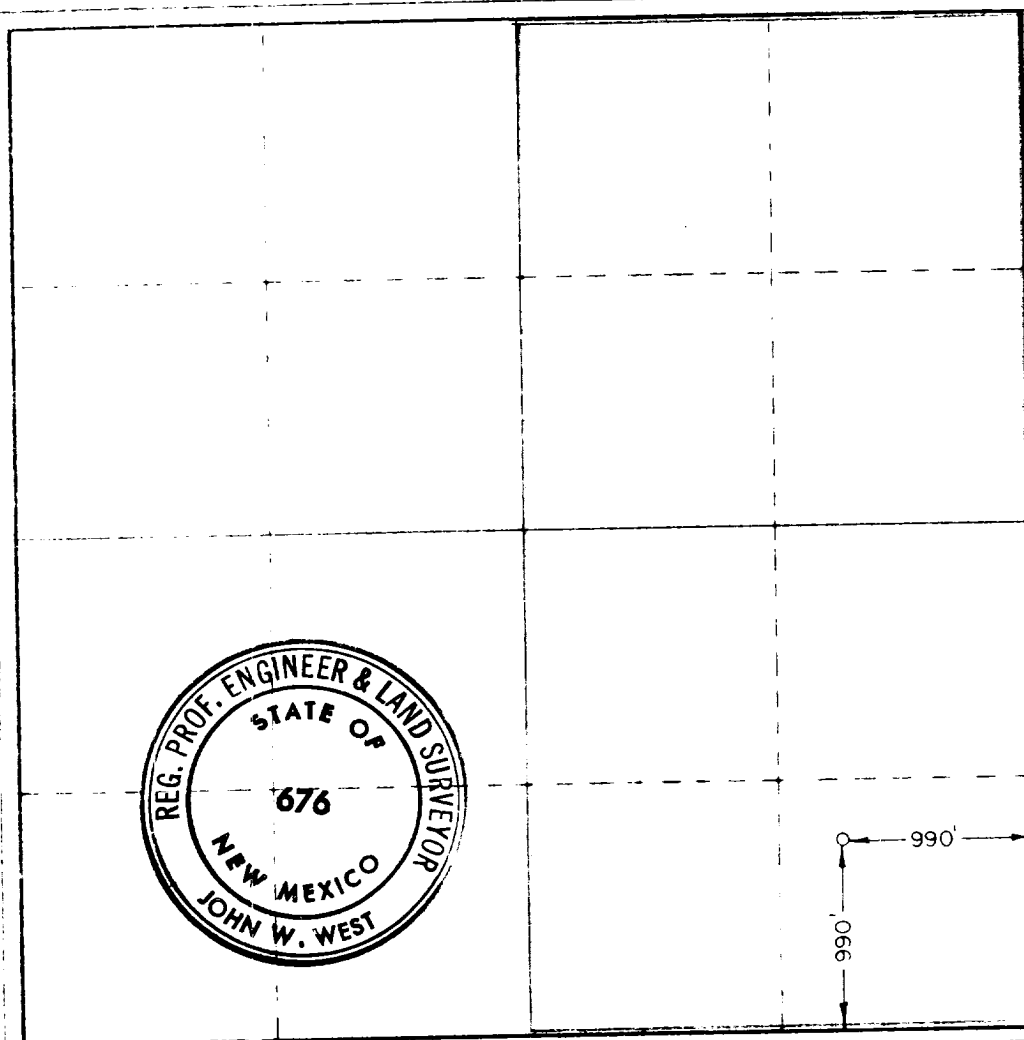
Felmont Oil Corporation		Lease		Atoka Comm		Well No. 2	
P	Section 12	Township 18 South	Range 26 East	County Eddy			
990 feet from the South line and		990 feet from the East line					
3286.3		Producing Formation Penn		Pool Atoka Penn Gas		Dedicated Acreage 320	

- Outline the acreage dedicated to the subject well by colored pencil or hachure marks on the plat below.
- If more than one lease is dedicated to the well, outline each and identify the ownership thereof (both as to working interest and royalty) **A statement of interest ownership will be furnished as soon as possible.**
- If more than one lease of different ownership is dedicated to the well, have the interests of all owners been consolidated by communitization, unitization, force-pooling, etc?

☒ Yes ☐ No If answer is "yes," type of consolidation communitization

If answer is "no," list the owners and tract descriptions which have actually been consolidated. (Use reverse side of this form if necessary.)

No allowable will be assigned to the well until all interests have been consolidated (by communitization, unitization, forced-pooling, or otherwise) or until a non-standard unit, eliminating such interests, has been approved by the Commission.



CERTIFICATION

I hereby certify that the information contained herein is true and complete to the best of my knowledge and belief.

Name Donna Hollis

Agent

Company

Felmont Oil Corporation

Date

July 9, 1974

I hereby certify that the well location shown on this plat was plotted from field notes of actual surveys made by me or under my supervision and that the same is true and correct to the best of my knowledge and belief.

Date Surveyed

July 2, 1974

Registered Professional Engineer and Land Surveyor

John W. West

Certificate No.

676

0 340 660 980 1320 1680 1980 2310 2640 2000 1800 1000 800 0