

UNITED STATES
DEPARTMENT OF THE INTERIOR
GEOLOGICAL SURVEY

30-015-21297

APPLICATION FOR PERMIT TO DRILL, DEEPEN, OR PLUG BACK

5. LEASE DESIGNATION AND SERIAL NO.

N.M. 0554471

6. IF INDIAN, ALLOTTEE OR TRIBE NAME

7. UNIT AGREEMENT NAME

8. FARM OR LEASE NAME

Federal

9. WELL NO.

1

10. FIELD AND POOL, OR WILDCAT

Wildcat

11. SEC., T., E., M., OR BLK.
AND SURVEY OR AREA

33-18S-24E

12. COUNTY OR PARISH

Eddy

13. STATE

N.M.

17. NO. OF ACRES ASSIGNED
TO THIS WELL

40

20. ROTARY OR CABLE TOOLS

Cable Tools

22. APPROX. DATE WORK WILL START*

July 28, 1974

1a. TYPE OF WORK

DRILL ☒DEEPEN ☐PLUG BACK ☐

b. TYPE OF WELL

OIL
WELL ☒GAS
WELL ☐

OTHER

SINGLE
ZONE ☒MULTIPLE
ZONE ☐

2. NAME OF OPERATOR

Monty J. Gist

3. ADDRESS OF OPERATOR

Suite 202, Gulf Building, Midland, Texas

4. LOCATION OF WELL (Report location clearly and in accordance with any State requirements.)*

At surface

1980' FNL, 660' FWL

At proposed prod. zone

San Andres Slaughter zone

14. DISTANCE IN MILES AND DIRECTION FROM NEAREST TOWN OR POST OFFICE*

13 miles Southwest of Artesia

O. C. C.
ARTESIA, OFFICE

15. DISTANCE FROM PROPOSED*

LOCATION TO NEAREST

PROPERTY OR LEASE LINE, FT.

(Also to nearest drlg. unit line, if any)

18. DISTANCE FROM PROPOSED LOCATION*

TO NEAREST WELL, DRILLING, COMPLETED,

OR APPLIED FOR, ON THIS LEASE, FT.

16. NO. OF ACRES IN LEASE

440

19. PROPOSED DEPTH

1250'

21. ELEVATIONS (Show whether DF, RT, GR, etc.)

3760 GR

23.

PROPOSED CASING AND CEMENTING PROGRAM

SIZE OF HOLE	SIZE OF CASING	WEIGHT PER FOOT	SETTING DEPTH	QUANTITY OF CEMENT
15-1/2"	13-3/8"	48#	200'	Circulate
10-3/4"	8-5/8"	32#	950'	Circulate
7-7/8"	4-1/2"	11.60#	1250'	Circulate

The proposed 1250' test will test the Slaughter zone of the San Andres formation. A 15-1/2" hole will be drilled through the surface gravel to set 13-5/8" casing at an approximate depth of 200'. Below the surface casing a 10-3/4" hole will be drilled to a depth 100 feet below the Artesian water zone where 8-5/8" casing will be set at an approximate depth of 950' and cemented to the surface. A 7-7/8" hole will be drilled below the water string to approximately 1250' to the Slaughter zone.

IN ABOVE SPACE DESCRIBE PROPOSED PROGRAM: If proposal is to deepen or plug back, give data on present productive zone and proposed new productive zone. If proposal is to drill or deepen directionally, give pertinent data on subsurface locations and measured and true vertical depths. Give blowout preventer program, if any.

24.

SIGNED

Monty J. Gist

TITLE Operator

DATE 7-17-74

(This space for Federal or State office use)

PERMIT NO.

APPROVAL DATE

TITLE

THIS APPROVAL IS REVOKED IF OPERATIONS
ARE NOT COMMENCED WITHIN 3 MONTHS.
EXPIRES OCT 21 1974

DECLARED WATER BASIN
CEMENT BEHIND THE
CASING MUST BE CIRCULATED

APPROVED
att: J. L. Beckman
33. L. Beckman
ACTING DISTRICT ENGINEER

RECEIVED
U.S. GEOLOGICAL SURVEY
ARTESIA, NEW MEXICO
JUL 22 1974

NE EXICO OIL CONSERVATION COMMISSIC
WELL LOCATION AND ACREAGE DEDICATION PLAT

Form C-102
Supersedes C-128
Effective 1-1-65

All distances must be from the outer boundaries of the Section.

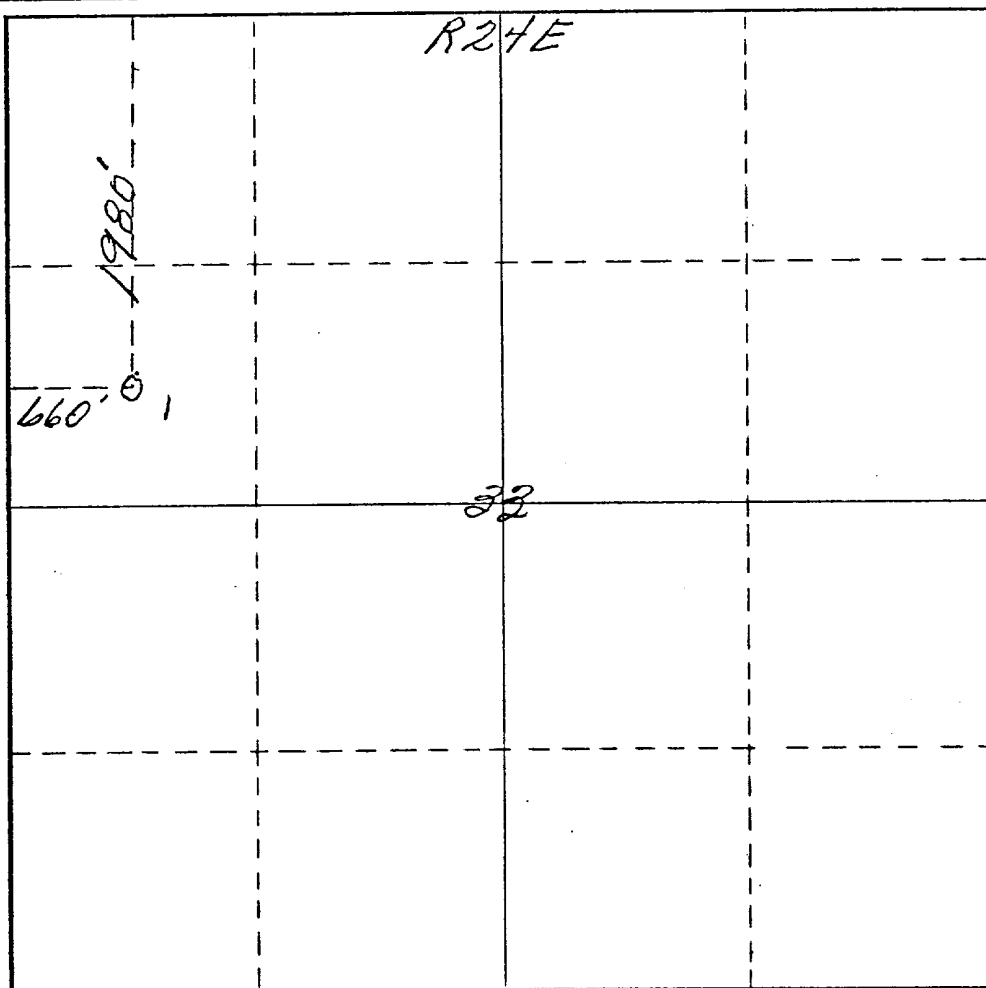
Operator <i>Marty J. Gist</i>		Lease <i>Federal Scribner</i>		Well No. <i>1</i>	
Unit Letter <i>E</i>	Section <i>33</i>	Township <i>18 South</i>	Range <i>24 East</i>	County <i>Eddy</i>	
Actual Footage Location of Well: <i>1980</i> feet from the <i>North</i> line and <i>660</i> feet from the <i>West</i> line					
Ground Level Elev. <i>3760</i>	Producing Formation		Pool	Dedicated Acreage: Acres	

1. Outline the acreage dedicated to the subject well by colored pencil or hachure marks on the plat below.
2. If more than one lease is dedicated to the well, outline each and identify the ownership thereof (both as to working interest and royalty).
3. If more than one lease of different ownership is dedicated to the well, have the interests of all owners been consolidated by communitization, unitization, force-pooling, etc?

☐ Yes ☐ No If answer is "yes," type of consolidation _____

If answer is "no," list the owners and tract descriptions which have actually been consolidated. (Use reverse side of this form if necessary.) _____

No allowable will be assigned to the well until all interests have been consolidated (by communitization, unitization, forced-pooling, or otherwise) or until a non-standard unit, eliminating such interests, has been approved by the Commission.



CERTIFICATION

I hereby certify that the information contained herein is true and complete to the best of my knowledge and belief.

Name

Position

Company

Date

I hereby certify that the well location shown on this plat was plotted from field notes of actual surveys made by me or under my supervision, and that the same is true and correct to the best of my knowledge and belief.

Date Surveyed

Registered Professional Engineer and/or Land Surveyor

Certificate No.

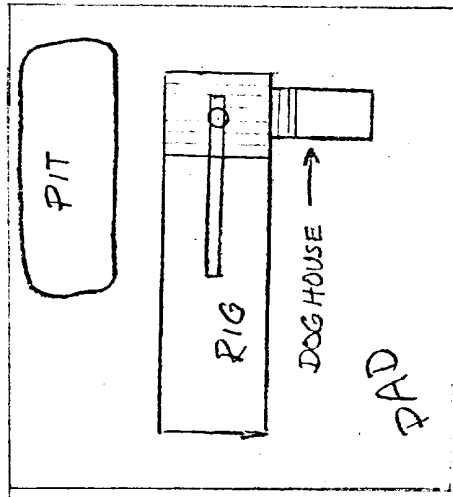
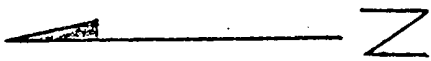
542

DEVELOPMENT PLAN FOR SURFACE USE

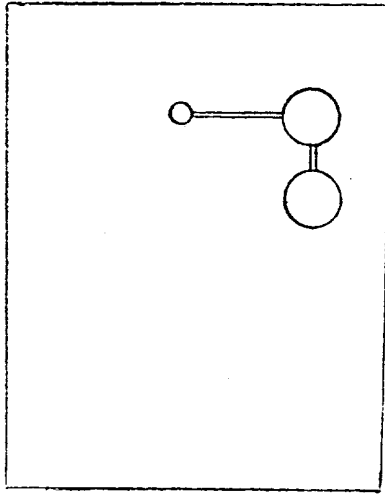
Monty J. Gist

Sec. 33 - T18S - R24E, 1980' FNL, 660' FWL

- 1 - 4 Topics 1 through 4 are taken care of with attached topographic map.
- 5 See attached plan - view
- 6 Water will be hauled to rig by truck.
- 7 All waste materials will be put in pit and will be covered with earth dug out to make pit.
- 8 - 9 Not applicable
- 10 See attached plan view
- 11 The surface will be restored to its approximate condition prior to drilling well.
- 12 A field representative has not been chosen yet.
Monty J. Gist can be contacted at AC 915 683-4921.



DRILLING LAYOUT
PLAN VIEW



TANK BATTERIES & FLOW LINES
PLAN VIEW

