

NO. OF COPIES RECEIVED	6
DISTRIBUTION	
SANTA FE	1
FILE	1
U.S.G.S.	2
LAND OFFICE	
OPERATOR	2

NEW MEXICO OIL CONSERVATION COMMISSION

30-015-21406  
Form C-101  
Revised 1-1-65

RECEIVED

OCT 25 1974

APPLICATION FOR PERMIT TO DRILL, DEEPEN, OR PLUG BACK

1a. Type of Work DRILL <input checked="" type="checkbox"/> DEEPEN <input type="checkbox"/> PLUG BACK <input type="checkbox"/>		ARTESIA, OFFICE	
b. Type of Well OIL WELL <input checked="" type="checkbox"/> GAS WELL <input type="checkbox"/> OTHER <input type="checkbox"/>		SINGLE ZONE <input type="checkbox"/> MULTIPLE ZONE <input type="checkbox"/>	
2. Name of Operator Yates Petroleum Corporation ✓			
3. Address of Operator 207 South 4th Street - Artesia, NM 88210			
4. Location of Well UNIT LETTER K LOCATED 1650 FEET FROM THE South LINE AND 1650 FEET FROM THE West LINE OF SEC. 25 TWP. 18S RGE. 25E NMPM			
5A. Indicate Type of Lease STATE <input type="checkbox"/> FEE <input checked="" type="checkbox"/>			
5. State Oil & Gas Lease No.			
7. Unit Agreement Name			
8. Farm or Lease Name Yates "AS" Fee			
9. Well No. 3			
10. Field and Pool, or Wildcat Penasco Draw (S.A. Yeso)			
12. County Eddy			
19. Proposed Depth approx. 1500'		19A. Formation San Andres	
20. Rotary or C.T. Rotary			
21. Elevations (Show whether DF, RT, etc.) 3464'		21A. Kind & Status Plug. Bond Blanket	
21B. Drilling Contractor Cactus Drilling Co.		22. Approx. Date Work will start As soon as approved	

23.

PROPOSED CASING AND CEMENT PROGRAM

SIZE OF HOLE	SIZE OF CASING	WEIGHT PER FOOT	SETTING DEPTH	SACKS OF CEMENT	EST. TOP
14-3/4"	10-3/4"	32#	Approx. 300'	175 sacks	Circulate
9-7/8"	7"	23-26#	" 1100'	450 sacks	Circulate
6 1/4"	4 1/2-5 1/2"	9.5-15.5#	" 1500'	135 sacks	Circulate
(Tapered)					

Propose to drill a San Andres Test to 1550' with approximately 300' of surface casing to shut off gravel and cavings, intermediate casing will be set 100' below the Artesian Zone and a tapered production string will be run, if productive, perforated and stimulated as needed.

Mud Program: FW gel w/LCM to 1100'. FW to TD.

BOP Program: BOP's will be installed in intermediate casing and tested for operational.

APPROVAL VALID  
FOR 90 DAYS UNLESS  
DRILLING COMMENCED,

IN ABOVE SPACE DESCRIBE PROPOSED PROGRAM: IF PROPOSAL IS TO DEEPEN OR PLUG BACK, GIVE DATA ON PRESENT PRODUCTIVE ZONE AND PROPOSED NEW PRODUCTIVE ZONE. GIVE BLOWOUT PREVENTER PROGRAM, IF ANY.

I hereby certify that the information above is true and complete to the best of my knowledge and belief.

Signed Eddie M. Mahoney Title Engineer Date 10-25-74  
(This space for State Use)

APPROVED BY W.A. Bessett TITLE OIL AND GAS INSPECTOR DATE OCT 29 1974

CONDITIONS OF APPROVAL, IF ANY:

Cement must be circulated to  
surface behind 10 3/4" casing

Notify N.M.O.C.C. in sufficient  
time to witness cementing  
the 7" casing

MEXICO OIL CONSERVATION COMMISSION  
WELL LOCATION AND ACREAGE DEDICATION PLAT

Form C-102  
Supersedes C-128  
Effective 1-1-65

All distances must be from the outer boundaries of the Section.

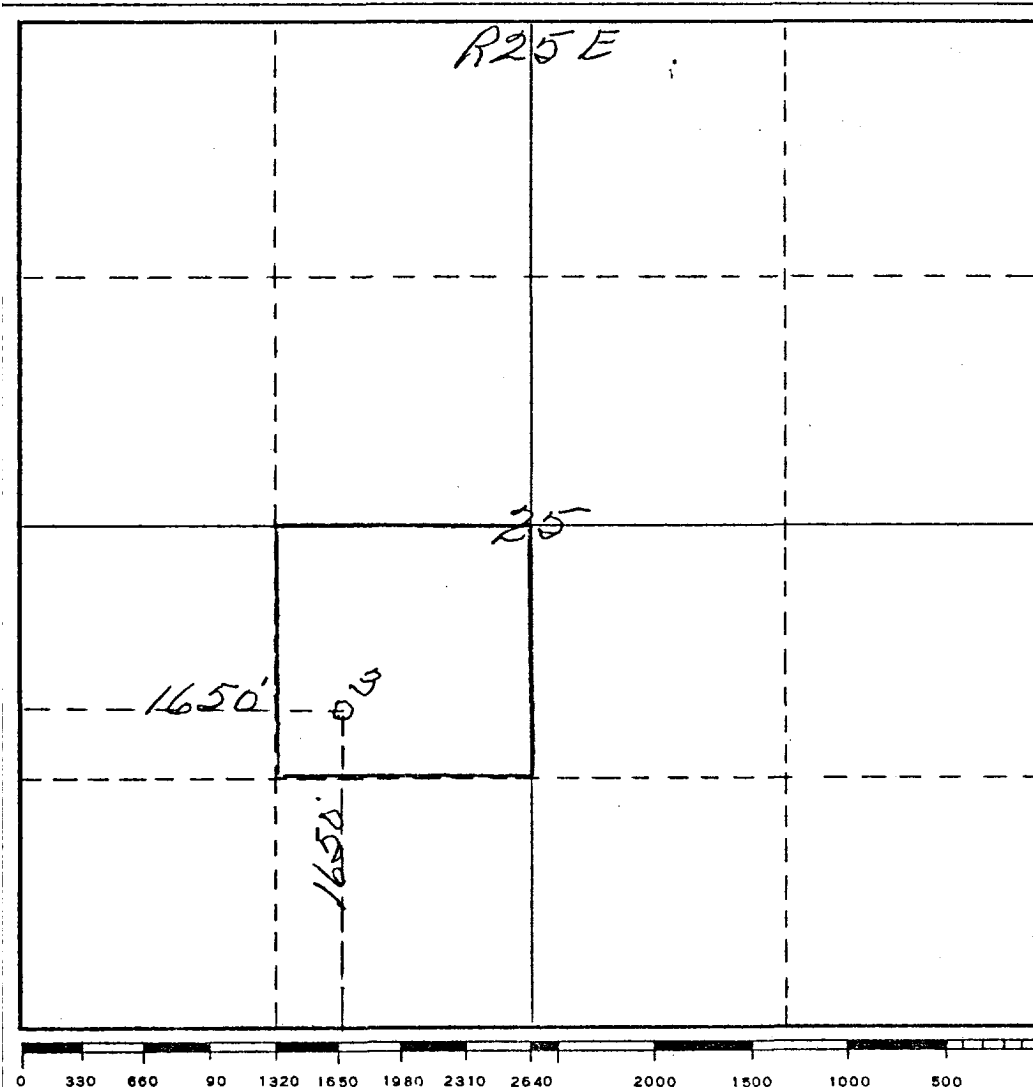
Operator <i>Yates Petroleum Corp.</i>			Lease <i>Yates <del>Field</del> "A5" Fee</i>		Well No. <i>3</i>
Unit Letter <i>K</i>	Section <i>25</i>	Township <i>18 South</i>	Range <i>25 East</i>	County <i>Eddy</i>	
Actual Footage Location of Well: <i>1650</i> feet from the <i>South</i> line and <i>1650</i> feet from the <i>West</i> line					
Ground Level Elev. <i>3464</i>	Producing Formation <i>San Andres</i>		Pool <i>Penasco Draw (S.A. Yeso)</i>		Dedicated Acreage; <i>40</i> Acres

1. Outline the acreage dedicated to the subject well by colored pencil or hachure marks on the plat below.
2. If more than one lease is dedicated to the well, outline each and identify the ownership thereof (both as to working interest and royalty).
3. If more than one lease of different ownership is dedicated to the well, have the interests of all owners been consolidated by communitization, unitization, force-pooling, etc?

☐ Yes    ☐ No    If answer is "yes," type of consolidation \_\_\_\_\_

If answer is "no," list the owners and tract descriptions which have actually been consolidated. (Use reverse side of this form if necessary.) \_\_\_\_\_

No allowable will be assigned to the well until all interests have been consolidated (by communitization, unitization, forced-pooling, or otherwise) or until a non-standard unit, eliminating such interests, has been approved by the Commission.



<b>CERTIFICATION</b>	
I hereby certify that the information contained herein is true and complete to the best of my knowledge and belief.	
<i>Eddie M. Mahfood</i>	
Name	Engineer - Eddie M.
Position	Mahfood
Company	Yates Pet. Corporation
Date	10-25-74
<p>I hereby certify that the well location shown on this plat was plotted from field notes of actual surveys made by me or under my supervision and that the same is true and correct to the best of my knowledge and belief.</p> <p align="center"><b>REGISTERED LAND SURVEYOR</b> <b>JAMES H. BROWN</b></p>	
Date Surveyed	<i>October 25<sup>th</sup> 1974</i>
Registered Professional Engineer and/or Land Surveyor	
<i>James H. Brown</i>	
Certificate No.	<i>542</i>