

NO. OF COPIES RECEIVED	5
DISTRIBUTION	
SANTA FE	1
FILE	1
U.S.G.S.	2
LAND OFFICE	
OPERATOR	1

NEW MEXICO OIL CONSERVATION COMMISSION

RECEIVED

NOV 7 1974

30-015-21411

Form C-101
Revised 1-1-65

5A. Indicate Type of Lease
STATE ☐ FEE ☒

5. State Oil & Gas Lease No.

APPLICATION FOR PERMIT TO DRILL, DEEPEN, OR PLUG BACK

1a. Type of Work ARTESIA, OFFICE		7. Unit Agreement Name	
b. Type of Well DRILL <input checked="" type="checkbox"/> DEEPEN <input type="checkbox"/> PLUG BACK <input type="checkbox"/> OIL WELL <input checked="" type="checkbox"/> GAS WELL <input type="checkbox"/> OTHER <input type="checkbox"/> SINGLE ZONE <input type="checkbox"/> MULTIPLE ZONE <input type="checkbox"/>		8. Farm or Lease Name Wilkinson "AZ"	
2. Name of Operator Yates Petroleum Corporation ✓		9. Well No. 3	
3. Address of Operator 207 South 4th Street-Artesia, NM 88210		10. Field and Pool, or Wildcat Penasco Draw (S.A. Yeso)	
4. Location of Well UNIT LETTER N LOCATED 480' FEET FROM THE South LINE 1780' West LINE OF SEC. 25 TWP. 18S RGE. 25E NMPM		12. County Eddy	
19. Proposed Depth Approx 1500'		19A. Formation San Andres	
20. Rotary or C.T. Rotary		21. Elevations (Show whether DF, RT, etc.) 3469' GR	
21A. Kind & Status Plug. Bond Blanket		21B. Drilling Contractor Cactus Drilling Co.	
22. Approx. Date Work will start As soon as approved			

23.

PROPOSED CASING AND CEMENT PROGRAM

SIZE OF HOLE	SIZE OF CASING	WEIGHT PER FOOT	SETTING DEPTH	SACKS OF CEMENT	EST. TOP
14-3/4"	10-3/4"	32#	Approx 300'	175 sacks	Circulate
9-7/8"	7"	23-26#	" 1100'	450 sacks	Circulate
6 1/4"	5 1/2 or 5 1/2"	9.5 or 15.5#	" 1500'	135 sacks	Circulate

Propose to drill a San Andres Test to approx. 1500' with approx 300' of surface casing to shut off gravel and cavings, intermediate casing will be set 100' below the Artesian Zone and a production string will be run, if productive, perforated and stimulated as needed.

Mud Program: FW gel w/LCM to 1100'. FW to TD.

BOP Program: BOP's will be installed in intermediate casing and tested, if operating.

APPROVAL VALID
FOR 90 DAYS UNLESS
DRILLING COMMENCED,

EXPIRES 2-8-75

IN ABOVE SPACE DESCRIBE PROPOSED PROGRAM: IF PROPOSAL IS TO DEEPEN OR PLUG BACK, GIVE DATA ON PRESENT PRODUCTIVE ZONE AND PROPOSED NEW PRODUCTIVE ZONE. GIVE BLOWOUT PREVENTER PROGRAM, IF ANY.

I hereby certify that the information above is true and complete to the best of my knowledge and belief.

Signed Eddie M. Hady Title Engineer Date 11-7-74

(This space for State Use)

APPROVED BY W. A. Gressett TITLE OIL AND GAS INSPECTOR DATE NOV 8 1974

CONDITIONS OF APPROVAL, IF ANY:

Cement must be circulated to
surface behind 10 3/4" casing

Notify N.M.O.C.C. in sufficient
time to witness cementing
the 7" casing

NEW MEXICO OIL CONSERVATION COMMISSION
WELL LOCATION AND ACREAGE DEDICATION PLAT

Form C-102
Supersedes C-128
Effective 1-1-65

All distances must be from the outer boundaries of the Section.

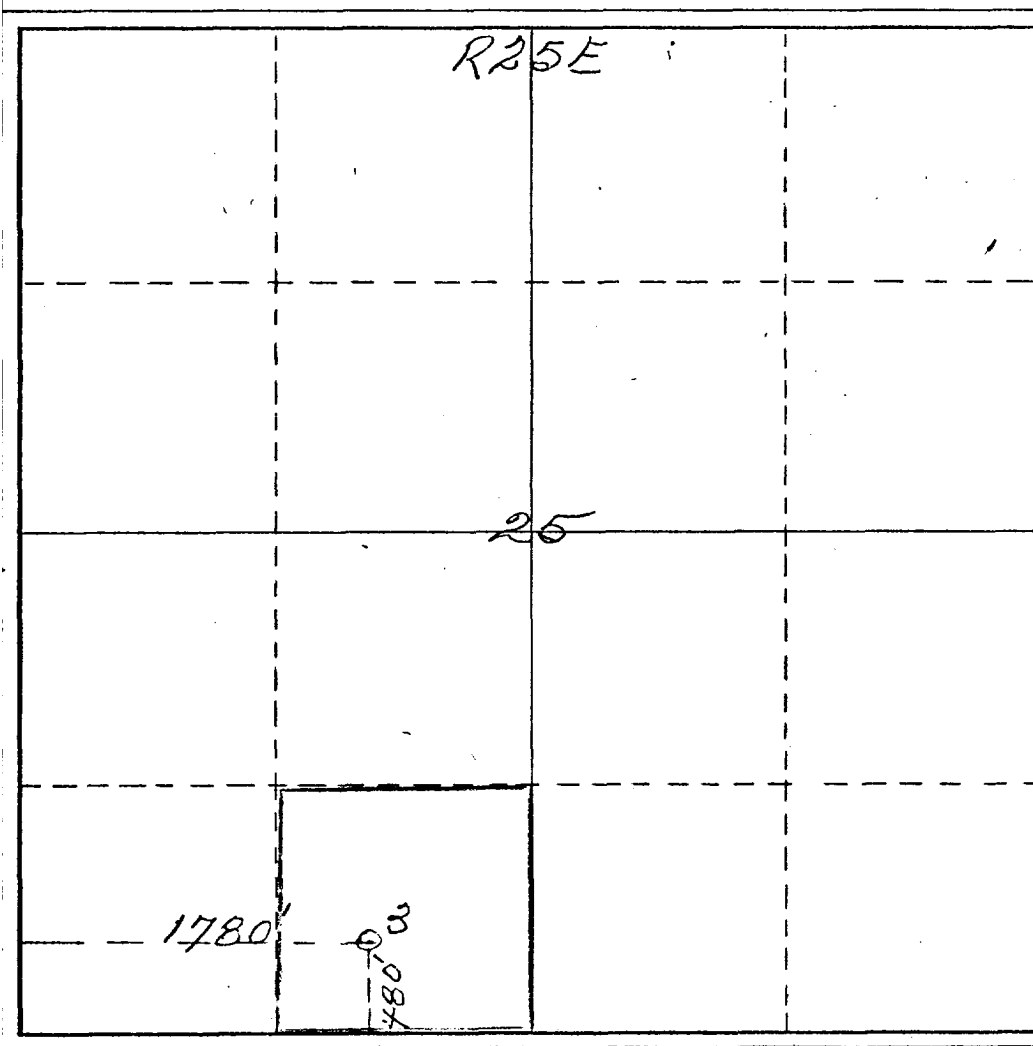
Operator <i>Yates Petroleum Corp</i>		Lease <i>Wilkinson</i>		Well No. <i>3</i>	
Unit Letter <i>N</i>	Section <i>25</i>	Township <i>18 South</i>	Range <i>25 East</i>	County <i>Eddy</i>	
Actual Footage Location of Well: <i>480</i> feet from the <i>South</i> line and <i>1780</i> feet from the <i>West</i> line					
Ground Level Elev. <i>3469</i>	Producing Formation <i>San Andres</i>	Poor <i>Penasco Draw</i>	Dedicated Acreage: <i>40</i> Acres		

1. Outline the acreage dedicated to the subject well by colored pencil or hachure marks on the plat below.
2. If more than one lease is dedicated to the well, outline each and identify the ownership thereof (both as to working interest and royalty).
3. If more than one lease of different ownership is dedicated to the well, have the interests of all owners been consolidated by communitization, unitization, force-pooling, etc?

☐ Yes ☐ No If answer is "yes," type of consolidation _____

If answer is "no," list the owners and tract descriptions which have actually been consolidated. (Use reverse side of this form if necessary.) _____

No allowable will be assigned to the well until all interests have been consolidated (by communitization, unitization, forced-pooling, or otherwise) or until a non-standard unit, eliminating such interests, has been approved by the Commission.



CERTIFICATION

I hereby certify that the information contained herein is true and complete to the best of my knowledge and belief.

Eddie M. Mahfood

Name

Eddie M. Mahfood

Position

Engineer

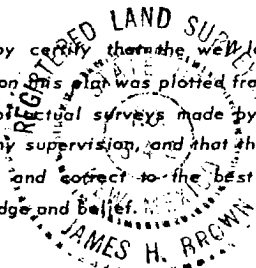
Company

Yates Pet. Corporation

Date

11-7-74

I hereby certify that the well location shown on this plat was plotted from field notes of actual surveys made by me or under my supervision, and that the same is true and correct to the best of my knowledge and belief.



Date Surveyed

November 5th 1974

Registered Professional Engineer and/or Land Surveyor

James H. Brown

Certificate No.

542

