

NO. OF COPIES RECEIVED	5
DISTRIBUTION	
SANTA FE	1
FILE	1
U.S.G.S.	2
LAND OFFICE	
OPERATOR	1

NEW MEXICO OIL CONSERVATION COMMISSION  
**RECEIVED**

NOV 18 1974

O. C. C.

30-015-21422

Form C-101  
Revised 1-1-65

5A. Indicate Type of Lease  
STATE ☐ FEE ☒

5. State Oil & Gas Lease No.

APPLICATION FOR PERMIT TO DRILL, DEEPEN, OR PLUG BACK

1a. Type of Work DRILL <input checked="" type="checkbox"/> DEEPEN <input type="checkbox"/> PLUG BACK <input type="checkbox"/>		7. Unit Agreement Name
b. Type of Well OIL WELL <input checked="" type="checkbox"/> GAS WELL <input type="checkbox"/> OTHER <input type="checkbox"/>		8. Farm or Lease Name Yates "AS" Fee
2. Name of Operator Yates Petroleum Corporation		9. Well No. 4
3. Address of Operator 207 South 4th Street - Artesia, NM 88210		10. Field and Pool, or Wildcat Penasco Draw (S.A. Yes)
4. Location of Well UNIT LETTER L LOCATED 1650 FEET FROM THE South LINE AND 330 FEET FROM THE West LINE OF SEC. 25 TWP. 18S RGE. 25E NMPM		12. County Eddy
19. Proposed Depth Approx. 2500'		19A. Formation Yeso
20. Rotary or C.T. Rotary		
21. Elevations (Show whether DF, RT, etc.) 3468' GR	21A. Kind & Status Plug. Bond Blanket	21B. Drilling Contractor Cactus Drilling Co.
22. Approx. Date Work will start As soon as approved		

23.

PROPOSED CASING AND CEMENT PROGRAM

SIZE OF HOLE	SIZE OF CASING	WEIGHT PER FOOT	SETTING DEPTH	SACKS OF CEMENT	EST. TOP
14 1/2"	10-3/4"	30#	Approx. 300'	Circulate	
9 1/2"	7"	23#	" 1050'	Circulate	
6 1/4"	5 1/2 or 4 1/2"	15.5 or 9.5#	" 2500'	Circulate	

Propose to drill to approx 2500' to test the Yeso formation. Surface casing will be set approx. 300' to shut off the gravel and cavings, intermediate casing will be set 100' below the Artesian water zone and 5 1/2 or 4 1/2" production casing will be run, if production is encountered.

BOP Program: - Install BOP's on intermediate casing and test daily.

Mud Program: - FW gel and LCM to 1050' or dry drill, FW to APPROVAL VALID FOR 90 DAYS UNLESS DRILLING COMMENCED,

EXPIRES 2-18-75

IN ABOVE SPACE DESCRIBE PROPOSED PROGRAM: IF PROPOSAL IS TO DEEPEN OR PLUG BACK, GIVE DATA ON PRESENT PRODUCTIVE ZONE AND PROPOSED NEW PRODUCTIVE ZONE. GIVE BLOWOUT PREVENTER PROGRAM, IF ANY.

I hereby certify that the information above is true and complete to the best of my knowledge and belief.

Signed Eldon H. Haly Title Engineer Date \_\_\_\_\_

(This space for State Use)

APPROVED BY W. A. Gressett TITLE OIL AND GAS INSPECTOR DATE NOV 18 1974

CONDITIONS OF APPROVAL, IF ANY:

Cement must be circulated to surface behind 10 3/4" 7" casing

Notify N.M.O.C.C. in sufficient time to witness cementing the 7" casing

NE MEXICO OIL CONSERVATION COMMISSION  
WELL LOCATION AND ACREAGE DEDICATION PLAT

Form C-102  
Supersedes C-128  
Effective 1-1-65

All distances must be from the outer boundaries of the Section.

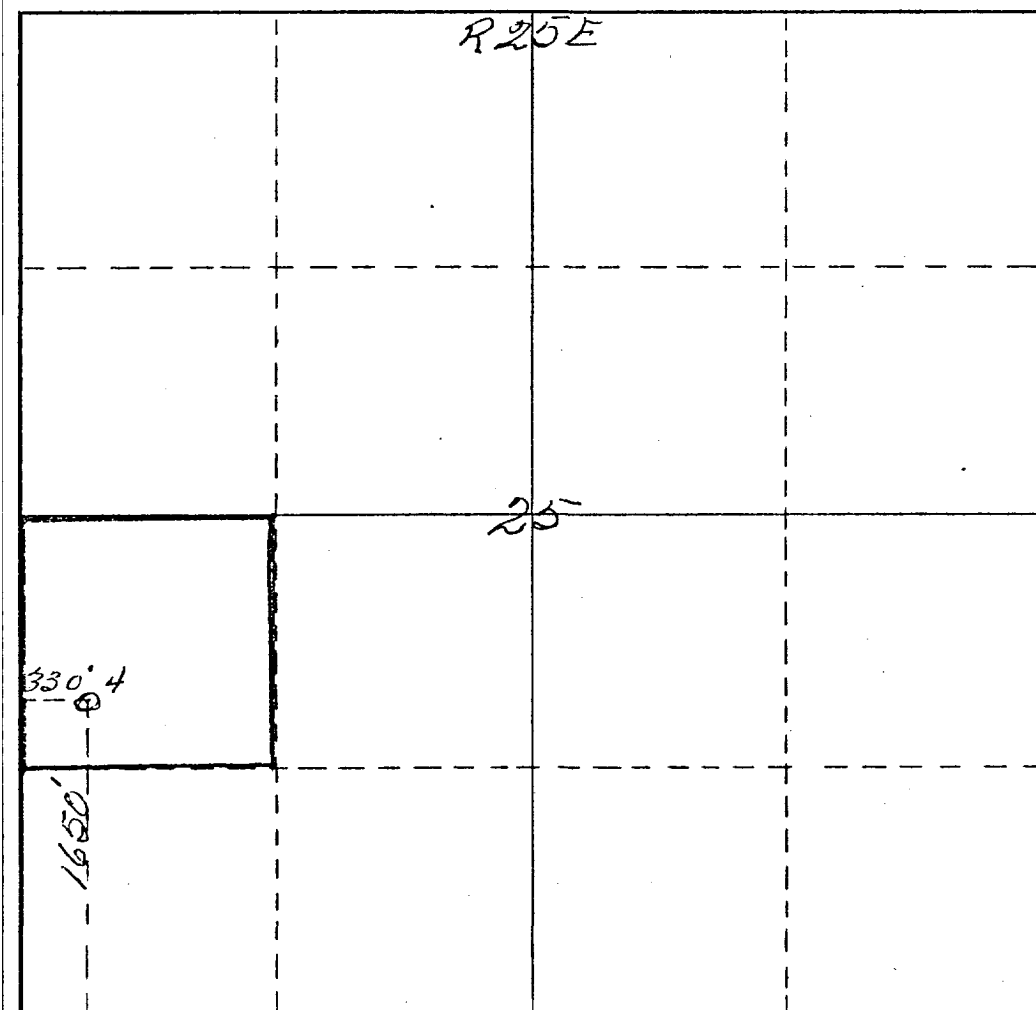
Operator <i>Yates Petroleum Corp.</i>			Lease <i>Yates Fee "A5"</i>			Well No. <i>4</i>
Unit Letter <i>L</i>	Section <i>25</i>	Township <i>18 South</i>	Range <i>25 East</i>	County <i>Eddy</i>		
Actual Footage Location of Well: <i>1650</i> feet from the <i>South</i> line and <i>330</i> feet from the <i>West</i> line						
Ground Level Elev. <i>3468</i>	Producing Formation <i>Gero San Andres</i>		Pool <i>Penasco Draw S1A Andra</i>	Dedicated Acreage: <i>40</i> Acres		

1. Outline the acreage dedicated to the subject well by colored pencil or hatchure marks on the plat below.
2. If more than one lease is dedicated to the well, outline each and identify the ownership thereof (both as to working interest and royalty).
3. If more than one lease of different ownership is dedicated to the well, have the interests of all owners been consolidated by communitization, unitization, force-pooling, etc?

☐ Yes ☐ No If answer is "yes," type of consolidation \_\_\_\_\_

If answer is "no," list the owners and tract descriptions which have actually been consolidated. (Use reverse side of this form if necessary.) \_\_\_\_\_

No allowable will be assigned to the well until all interests have been consolidated (by communitization, unitization, forced-pooling, or otherwise) or until a non-standard unit, eliminating such interests, has been approved by the Commission.



CERTIFICATION

I hereby certify that the information contained herein is true and complete to the best of my knowledge and belief.

*Eddie M. Mahfood*

Name

*Eddie M. Mahfood*

Position

*Engineer*

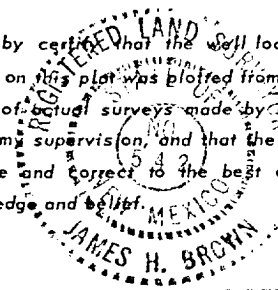
Company

*Yates Petroleum Corp.*

Date

*11-14-74*

I hereby certify that the well location shown on this plat was plotted from field notes of actual surveys made by me or under my supervision, and that the same is true and correct to the best of my knowledge and belief.



Date Surveyed

*November 12<sup>th</sup> 1964*

Registered Professional Engineer  
and/or Land Surveyor

*James H. Brown*

Certificate No.

*542*

