

NO. OF COPIES RECEIVED	5
DISTRIBUTION	
SANTA FE	1
FILE	1
U.S.G.S.	2
LAND OFFICE	
OPERATOR	1

NEW MEXICO OIL CONSERVATION COMMISSION

RECEIVED

DEC 9 1974

30-015-21434

Form C-101
Revised 1-4-65

5A. Indicate Type of Lease	
STATE <input type="checkbox"/>	FEE <input type="checkbox"/>
5. State Oil & Gas Lease No.	
7. Unit Agreement Name	
8. Farm or Lease Name Hornbaker "BA"	
9. Well No. 3	
10. Field and Pool, or Wildcat Penasco Draw (S.A.)	
12. County Eddy	
19. Proposed Depth approx 1500'	19A. Formation San Andres
20. Rotary or C.T. Rotary	
21. Elevations (Show whether DF, RT, etc.) 3460' GR	21A. Kind & Status Plug. Bond Blanket
21B. Drilling Contractor Cactus Drilling Co.	22. Approx. Date Work will start As soon as approved

APPLICATION FOR PERMIT TO DRILL, DEEPEN, OR PLUG BACK

1a. Type of Work	
b. Type of Well	
DRILL <input checked="" type="checkbox"/>	DEEPEN <input type="checkbox"/>
OIL WELL <input checked="" type="checkbox"/>	GAS WELL <input type="checkbox"/>
OTHER <input type="checkbox"/>	
2. Name of Operator Yates Petroleum Corporation	
3. Address of Operator 207 South 4th Street - Artesia, NM 88210	
4. Location of Well	
UNIT LETTER G	LOCATED 2310
FEET FROM THE North LINE	
AND 2310	FEET FROM THE East
LINE OF SEC. 25	TWP. 18S
RCE. 25E	NMPM

21. Elevations (Show whether DF, RT, etc.) 3460' GR	
21A. Kind & Status Plug. Bond Blanket	
21B. Drilling Contractor Cactus Drilling Co.	
22. Approx. Date Work will start As soon as approved	

PROPOSED CASING AND CEMENT PROGRAM

SIZE OF HOLE	SIZE OF CASING	WEIGHT PER FOOT	SETTING DEPTH	SACKS OF CEMENT	EST. TOP
14-3/4"	10-3/4"	32#	Approx. 300'	175 sacks	Circulate
9-7/8"	7"	23-26#	" 1100'	450 sacks	Circulate
6 1/4"	4 1/2 or 5 1/2"	9.5 or 15.5#	" 1500'	135 sacks	Circulate

Propose to drill a San Andres Test to approx. 1500' with approx 300' of surface casing to shut off gravel and cavings, intermediate casing will be set 100' below the Artesian Zone and a production string will be run, if productive, perforated and stimulated as needed.

Mud Program: FW gel w/LCM to 1100'. FW to TD.

BOP Program: BOP's will be installed in intermediate casing and tested for operational.

APPROVAL VALID
FOR 90 DAYS UNLESS
DRILLING COMMENCED,

EXPIRES 3-9-75

IN ABOVE SPACE DESCRIBE PROPOSED PROGRAM: IF PROPOSAL IS TO DEEPEN OR PLUG BACK, GIVE DATA ON PRESENT PRODUCTIVE ZONE AND PROPOSED NEW PRODUCTIVE ZONE, GIVE BLOWOUT PREVENTER PROGRAM, IF ANY.

I hereby certify that the information above is true and complete to the best of my knowledge and belief.

Signed Eddie M. Cray Title Engineer Date 12-6-74

(This space for State Use)

APPROVED BY W. A. Grasset TITLE OIL AND GAS INSPECTOR DATE DEC 9 1974

CONDITIONS OF APPROVAL, IF ANY:

Cement must be circulated to
surface behind 10% 7" casing

Notify N.M.O.C.C. in sufficient
time to witness cementing
the 7" casing

NE MEXICO OIL CONSERVATION COMMISSION
WELL LOCATION AND ACREAGE DEDICATION PLAT

Form C-102
Supersedes C-128
Effective 1-4-65

All distances must be from the outer boundaries of the Section.

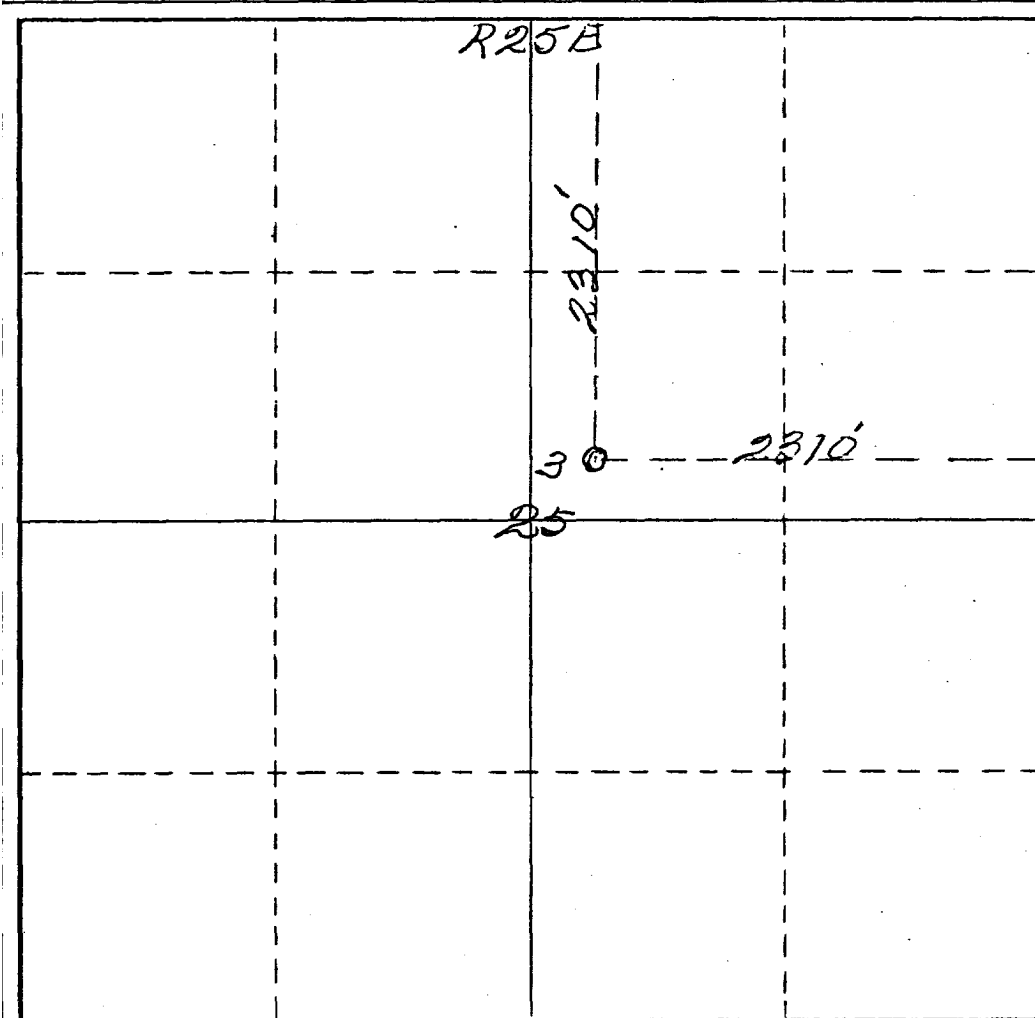
Operator <i>Yates Petroleum Corp</i>		Lease <i>Herrinbaker "BA"</i>		Well No. <i>3</i>	
Unit Letter <i>G</i>	Section <i>25</i>	Township <i>18 South</i>	Range <i>25 East</i>	County <i>Eddy</i>	
Actual Footage Location of Well: <i>2310</i> feet from the <i>North</i> line and <i>2310</i> feet from the <i>East</i> line					
Ground Level Elev. <i>3460</i>	Producing Formation <i>San Andres</i>		Pool <i>Penasco Draw 5000</i>	Dedicated Acreage: <i>40</i> Acres	

1. Outline the acreage dedicated to the subject well by colored pencil or hatchure marks on the plat below.
2. If more than one lease is dedicated to the well, outline each and identify the ownership thereof (both as to working interest and royalty).
3. If more than one lease of different ownership is dedicated to the well, have the interests of all owners been consolidated by communitization, unitization, force-pooling, etc?

☐ Yes ☐ No If answer is "yes," type of consolidation _____

If answer is "no," list the owners and tract descriptions which have actually been consolidated. (Use reverse side of this form if necessary.) _____

No allowable will be assigned to the well until all interests have been consolidated (by communitization, unitization, forced-pooling, or otherwise) or until a non-standard unit, eliminating such interests, has been approved by the Commission.



CERTIFICATION

I hereby certify that the information contained herein is true and complete to the best of my knowledge and belief.

Eddie M. Mahfood
Name
Eddie M. Mahfood

Position

Engineer

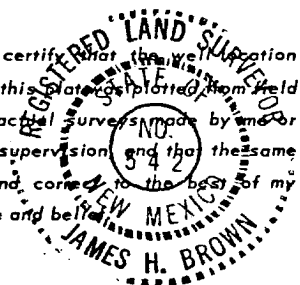
Company

Yates Pet. Corporation

Date

12-6-74

I hereby certify that the well location shown on this plat was plotted from field notes of actual surveys made by me or under my supervision and that the same is true and correct to the best of my knowledge and belief.



Date Surveyed

December 5th 1974

Registered Professional Engineer
and/or Land Surveyor

James H. Brown
Certificate No.

542

