

UNITED STATES
DEPARTMENT OF THE INTERIOR
BUREAU OF LAND MANAGEMENT

(Other instructions on reverse side)

Expires August 31, 1984

5. LEASE DESIGNATION AND SERIAL NO.

LC-029418-B

6. IF INDIAN, ALLOTTEE OR TRIBE NAME

SUNDRY NOTICES AND REPORTS ON WELLS

(Do not use this form for proposals to drill or to deepen or plug back to a different reservoir.
Use "APPLICATION FOR PERMIT--" for such proposals.)

RECEIVED

1.

OIL WELL ☒ GAS WELL ☐ OTHER ☐

2. NAME OF OPERATOR

Texaco Producing Inc. ✓

SEP 19 '90

3. ADDRESS OF OPERATOR

P.O. Box 730, Hobbs, NM 88240

O. C. D.

ARTESIA OFFICE

4. LOCATION OF WELL (Report location clearly and in accordance with any State requirements.
See also space 17 below.)
At surface

Letter K, 1980' FSL & 1980' FWL

7. UNIT AGREEMENT NAME

Lea "D"

8. FARM OR LEASE NAME

Lea "D"

9. WELL NO.

9

10. FIELD AND POOL, OR WILDCAT

GB Jackson/Fren Seven Rvrs

11. SEC., T., R., M., OR BLK. AND SURVEY OR AREA

Section 26, T-17-S, R-31-E

14. PERMIT NO.

15. ELEVATIONS (Show whether DF, RT, GR, etc.)

3825' GL

12. COUNTY OR PARISH

Eddy

13. STATE

NM

16. Check Appropriate Box To Indicate Nature of Notice, Report, or Other Data

NOTICE OF INTENTION TO:

TEST WATER SHUT-OFF

PULL OR ALTER CASING

FRACTURE TREAT

MULTIPLE COMPLETE

SHOOT OR ACIDIZE

ABANDON*

REPAIR WELL

CHANGE PLANS

(Other)

SUBSEQUENT REPORT OF:

WATER SHUT-OFF

FRACTURE TREATMENT

SHOOTING OR ACIDIZING

(Other)

REPAIRING WELL

ALTERING CASING

ABANDONMENT*

(NOTE: Report results of multiple completion on Well Completion or Recompletion Report and Log form.)

17. DESCRIBE PROPOSED OR COMPLETED OPERATIONS (Clearly state all pertinent details, and give pertinent dates, including estimated date of starting any proposed work. If well is directionally drilled, give subsurface locations and measured and true vertical depths for all markers and zones pertinent to this work.) *

SEE ATTACHMENT

18. I hereby certify that the foregoing is true and correct

SIGNED

TITLE

Area Manager

DATE

09/07/90

(This space for Federal or State office use)

APPROVED BY

TITLE

PETROLEUM ENGINEER

DATE

9-18-90

CONDITIONS OF APPROVAL, IF ANY:

*See Instructions on Reverse Side

Lea "D" WELL NO. 9
Proposed Plugging Procedure

- 1) Inform BLM 24 hrs. prior to commencement of work.
- 2) MIRU pulling unit. Pull rods and pump. Install BOP. Pull tubing.
- 3) RIH with 2 3/8" tubing and cement retainer. Set retainer at 2580'. Squeeze perfs with 75 sx of Class "C" cement (1.32 cuft/sx). Flush with 9 BBLS of water. Sting out of retainer and flush remaining cement on top of retainer.
- 4) Load hole with salt gel mud consisting of 10 lb. brine with 25 lbs. of gel per barrel.
- 5) Pull up and spot a 25 sx plug of Class "C" cement (1.32 cuft/sx) from 2185'-1940' (base of salt 1944'). Tag plug.
- 7) Pull up and spot a 30 sx plug of Class "C" cement (1.32 cuft/sx) from 860'-565' (top of salt 856', surface casing shoe at 616'). Tag plug.
- 8) Pull up and pump 6 sx of Class "C" cement (1.32 cuft/sx) from 50'-surface.
- 9) Cut off wellhead. Install marker. Clean location.

LEAD" # 9

PROPOSED

FRENT-RIERS / GRAIRBURG JACKSON

SEC 26, T-17-S, R-31-E

TR K, APP FSL, 1980' FWL

Spot 64x cmt from
50' - surface

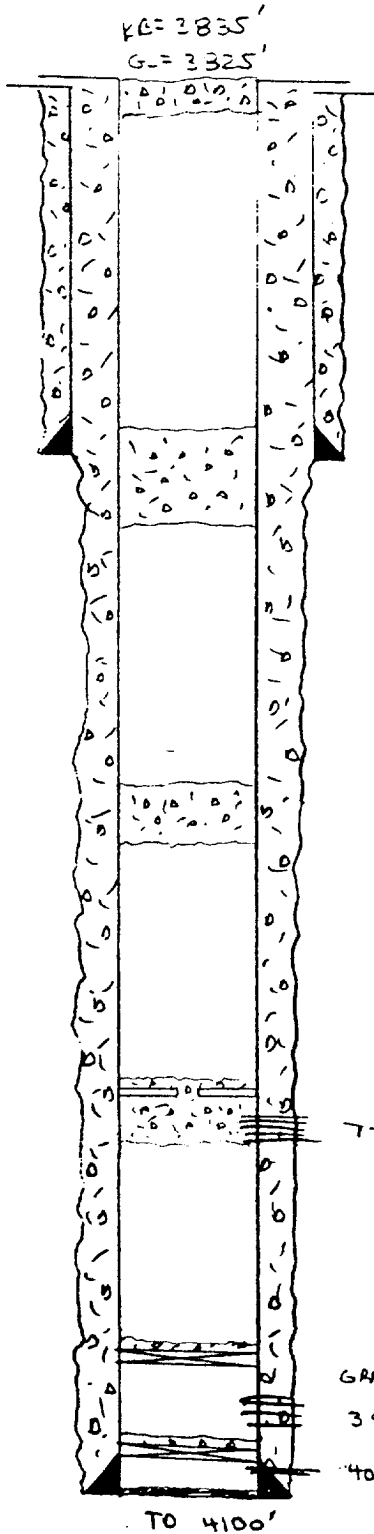
Spot 305x cmt from
860' - 565'

Spot 255x cmt. from
2185' - 1940'

Set cmt. net @ 2580 and
eqt. perms w/ 755x cmt.

CIBP SET AT 3850'
WITH 25' CMT

CIBP SET AT 4050'
WITH 1 1/2 5x cmt.



2 1/2\" 24\" SET AT 616'
14 11\" Hole w/ 3755x
cmt. circ.

856' TOP SALT

1944' BOTTOM SALT

T-RIVERS PERFS 2613'-2987' (23 Holes)

GRAIRBURG PERFS:

3903'-3993 (6 Holes)

4068-4074 (2 Holes)

5 1/2\" 15.5\" SET AT 4100'
14 7 7/8\" Hole w/ 9255x
cmt. circ.

LEAD" # 9

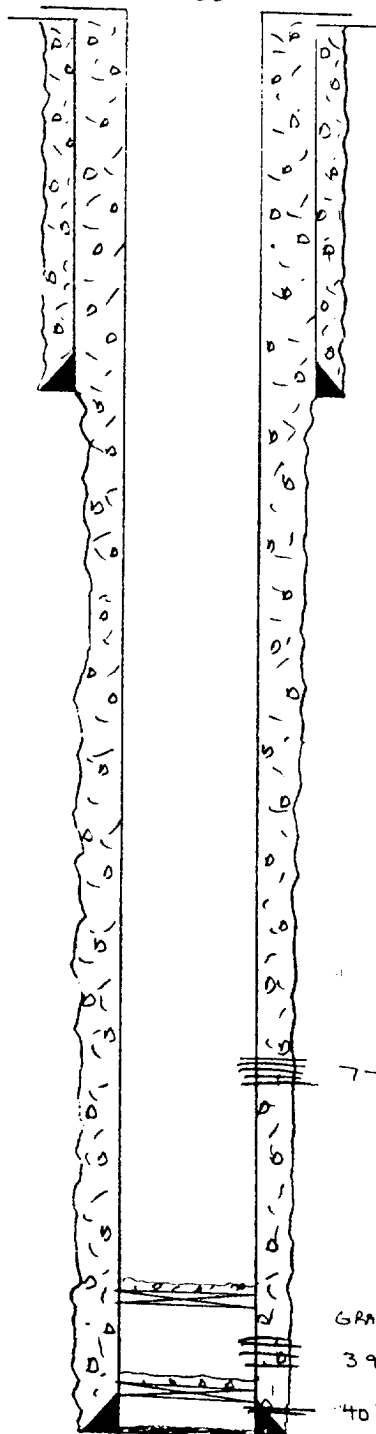
PRESENT

FRENTERS / GRAYBURG JACKSON

SEC 26, T-17-S, R-31-E

LTR K, 1920' FSL, 1920' FILL

KB= 3835'
GL= 3825'



8 5/8" 24# SET AT 616'
IN 11" Hole w/ 375 SX
CMT. CIRC.

856' TOP SALT

1944' BOTTOM SALT

7-RIVERS PERFS 2613'-2987' (23 Holes)

CIBP SET AT 3850'
WITH 35' CMT

CIBP SET AT 4050'
WITH 1 1/2 SX CMT.

GRAYBURG PERFS:
3903'-3993 (6 Holes)

4068-4074 (2 Holes)

5 1/2" 15.5# SET AT 4100'
IN 7 7/8" Hole w/ 925 SX
CMT. CIRC.