

UNITED STATES
DEPARTMENT OF THE INTERIOR
GEOLOGICAL SURVEY

30-015-21560

APPLICATION FOR PERMIT TO DRILL, DEEPEN, OR PLUG BACK

1a. TYPE OF WORK

DRILL ☒DEEPEN ☐PLUG BACK ☐

b. TYPE OF WELL

OIL
WELL ☐GAS
WELL ☒

OTHER

SINGLE
ZONE ☐MULTIPLE
ZONE ☐

2. NAME OF OPERATOR

Yates Petroleum Corporation ✓

3. ADDRESS OF OPERATOR

207 So. 4th Street - Artesia, NM 88210

4. LOCATION OF WELL (Report location clearly and in accordance with any State requirements.)

At surface

1980' FSL & 660' FEL of Sec. 27-18S-25E

At proposed prod. zone

14. DISTANCE IN MILES AND DIRECTION FROM NEAREST TOWN OR POST OFFICE*

Approx 9 miles SW of Artesia N.M.

15. DISTANCE FROM PROPOSED*

660'

LOCATION TO NEAREST
PROPERTY OR LEASE LINE, FT.
(Also to nearest drlg. unit line, if any)

18. DISTANCE FROM PROPOSED LOCATION*

TO NEAREST WELL, DRILLING, COMPLETED,
OR APPLIED FOR, ON THIS LEASE, FT.

19. PROPOSED DEPTH

Approx 9200'

21. ELEVATIONS (Show whether DF, RT, GR, etc.)

3551' GR

23.

PROPOSED CASING AND CEMENTING PROGRAM

SIZE OF HOLE	SIZE OF CASING	WEIGHT PER FOOT	SETTING DEPTH	QUANTITY OF CEMENT
17½"	12-3/4" or 13-3/8"	48#	approx 275'	Circulate
12"	8-5/8"	32#	approx 1100'	Circulate
7-7/8"	4½" or 5½"	10.5-11.6# or 15.5-17#	approx 9200'	400 sacks

Propose to drill and test the Morrow sand and intermediate formations. Approx 275' of surface casing will be cemented for protection from surface gravel, 8-5/8" casing will be run and set 100' below the Artesian water zone. If production is encountered 4½" or 5½" casing will be run.

Mud Program:- Fresh water gel to 1100', water to 6500', flosal and drispak to total depth.

BOP Program:- BOP's will be installed on intermediate casing, Hydril will be installed and tested prior to drilling the Wolfcamp; pipe rams will be tested daily, blind rams on trips.

IN ABOVE SPACE DESCRIBE PROPOSED PROGRAM: If proposal is to deepen or plug back, give data on present productive zone and proposed new productive zone. If proposal is to drill or deepen directionally, give pertinent data on subsurface locations and measured and true vertical depths. Give blowout preventer program, if any.

24.

SIGNED

Eldred H. Mayfield

TITLE

Engineer

DATE 6/4/75

(This space for Federal or State office use)

PERMIT NO.

SUBJECT TO ATTACHED DEEP WELL CONTROL
APPROVAL DATE
REQUIREMENTS DATED JUN 22 1975

TITLE

APPROVED
JUN 9 - 1975
R. L. BEEKMAN
ACTING DISTRICT ENGINEER

CONDITIONS OF APPROVAL, IF ANY:

THIS APPROVAL IS RESCINDED IF OPERATIONS
ARE NOT COMMENCED WITHIN 3 MONTHS.
SEP 9 - 1975

*See Instructions On Reverse Side

DECLARED WATER BASIN
134
WITNESS CEMENTING THE
CASING MUST BE CIRCULATED

WITNESS CEMENTING THE

CASING.

NEW MEXICO OIL CONSERVATION COMMISSION
WELL LOCATION AND ACREAGE DEDICATION PLAT

Form C-102
Supersedes C-128
Effective 1-1-65

All distances must be from the outer boundaries of the Section.

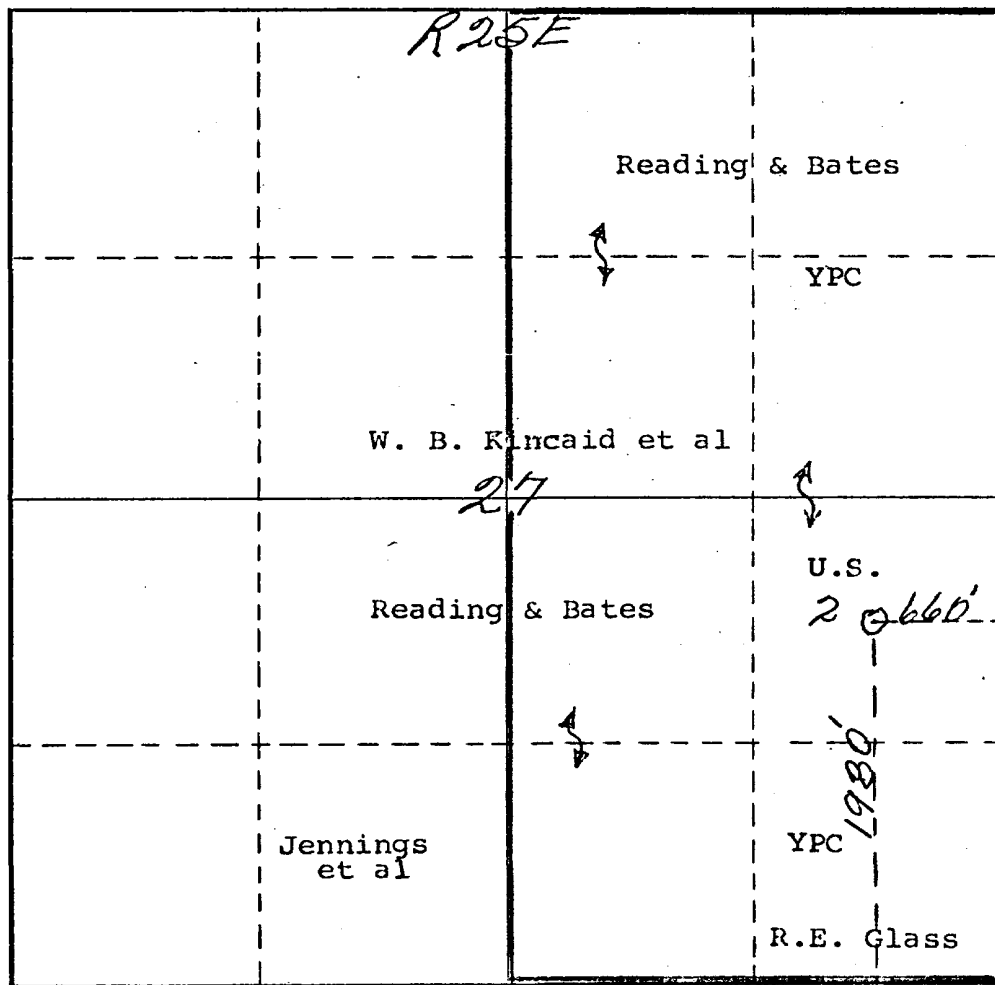
Operator <i>Yates Petroleum Corp</i>			Lease <i>Scout Federal #1</i>			Well No. <i>2</i>
Unit Letter <i>I</i>	Section <i>27</i>	Township <i>18 South</i>	Range <i>25 East</i>	County <i>Eddy</i>		
Actual Footage Location of Well: <i>1980</i> feet from the <i>South</i> line and <i>660</i> feet from the <i>East</i> line						
Ground Level Elev. <i>3551</i>	Producing Formation <i>Morrow</i>		Pool <i>Wildcat</i>		Dedicated Acreage <i>320</i> Acres	

- Outline the acreage dedicated to the subject well by colored pencil or hatchure marks on the plat below.
- If more than one lease is dedicated to the well, outline each and identify the ownership thereof (both as to working interest and royalty).
- If more than one lease of different ownership is dedicated to the well, have the interests of all owners been consolidated by communitization, unitization, force-pooling, etc?

Y ☒ Yes ☐ No If answer is "yes," type of consolidation Communitization

If answer is "no," list the owners and tract descriptions which have actually been consolidated. (Use reverse side of this form if necessary.)

No allowable will be assigned to the well until all interests have been consolidated (by communitization, unitization, forced-pooling, or otherwise) or until a non-standard unit, eliminating such interests, has been approved by the Commission.



CERTIFICATION

I hereby certify that the information contained herein is true and complete to the best of my knowledge and belief.

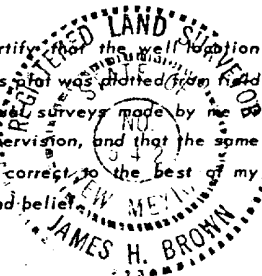
Name
Eddie M. Mahfood

Position
Engineer

Company
Yates Petroleum Corp

Date
6-4-75

I hereby certify that the well location shown on this plat was plotted from field notes of actual surveys made by me or under my supervision, and that the same is true and correct to the best of my knowledge and belief.



Date Surveyed
May 8th 1975

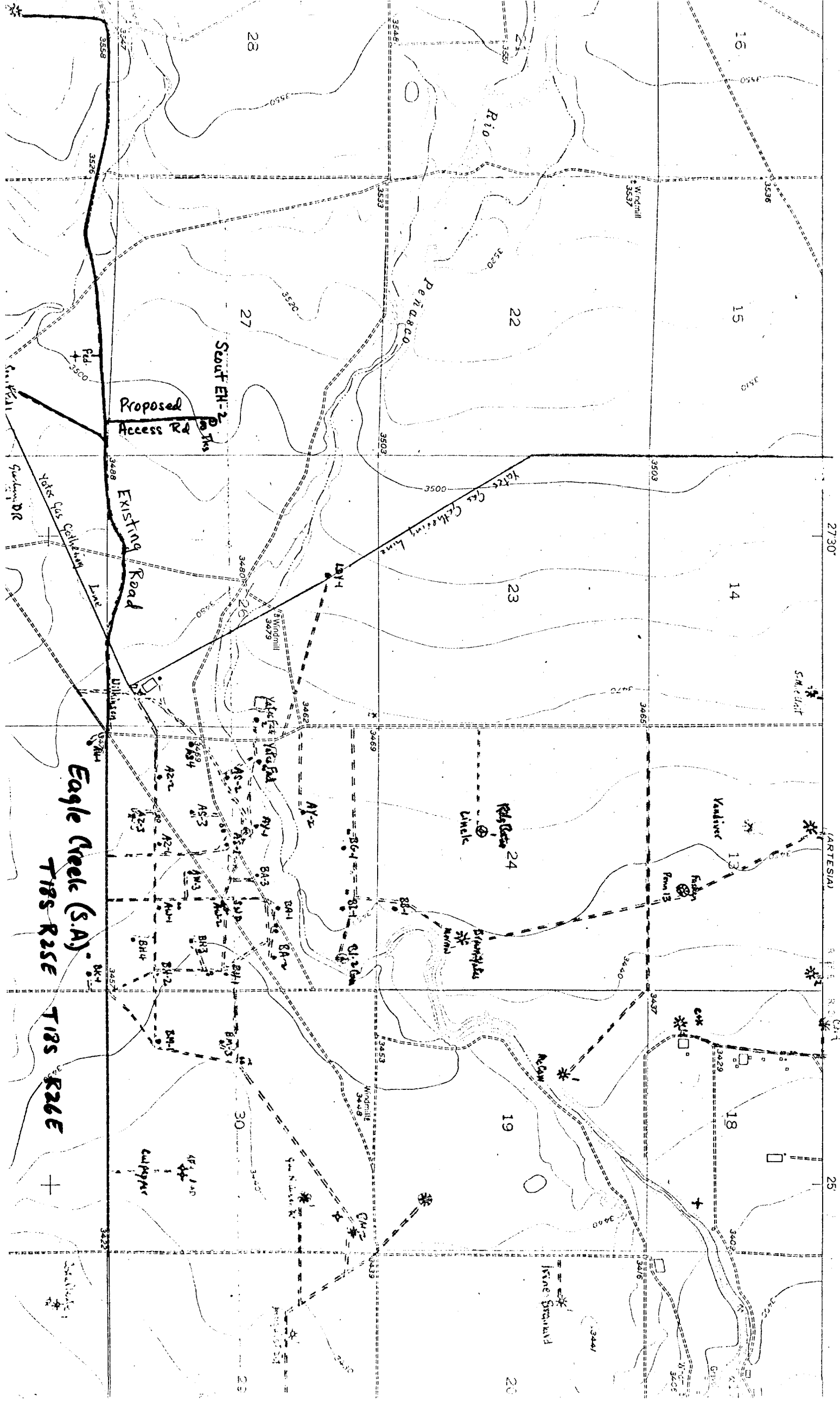
Registered Professional Engineer and/or Land Surveyor

James H. Brown
Certificate No. *542*

Yates Petroleum Corporation
Scout Federal "EH" No. 2 Com
1980' FSL & 660' FEL
Section 27-18S-25E,
Eddy County, New Mexico

Development plan to accompany "Applications to Drill, Federal Lease".
12-Point Plan.

1. EXISTING ROADS: See Plat (Exhibit A) Lease road maintained, caliche
2. PLANNED ACCESS ROADS: See Plat (Exhibit A) Approx 1900' new road north from existing lease road, caliche
3. LOCATION OF WELLS: See Plat (Exhibit A) North offset to dry hole drilled by Belco in Sec. 34-18S-25E
4. LATERAL ROADS TO LOCATION: See Plat (Exhibit A) None anticipated
5. LOCATION OF TANK BATTERY & FLOWLINES: See Plat (Exhibit C) SE corner of pad, fenced, with berm and sump for emergency spil
6. LOCATION & TYPES OF WATER SUPPLY: See Plat (Exhibit A) Water well & reservoir in SE corner of Sec. 26-18S-25E, to be piped or trucked.
7. METHODS FOR HANDLING WASTE DISPOSAL: See Sketch (Exhibit C) Mud in mud pits, engine oil & trash in burn pits.
8. LOCATION OF CAMPS: Not Applicable.
9. LOCATION OF AIRSTRIPS: Not Applicable.
10. LOCATION LAYOUT (rig, tanks, pits, racks, etc): See Sketch (Exhibit C)
11. PLANS FOR RESTORATION OF SURFACE: Mud pits to be fenced until dried out then leveled and allowed to seed itself. Upon abandonment, location will be cleaned and leveled, restored to near original and to Owner's satisfaction.
12. OTHER ENVIRONMENT INFORMATION: Slightly rolling terrain, rocky loam with prairie grass, greasewood, yellow tops, occasional cactus; surface patented to Kincaid Estate, grazed by Ralph Schafer of Lakewood, NM 457-2223.



Yates Petroleum Corporation
 Scout Federal "EH" No. 2 Com.
 Unit I, Sec 27-18S-25E, Eddy Co.

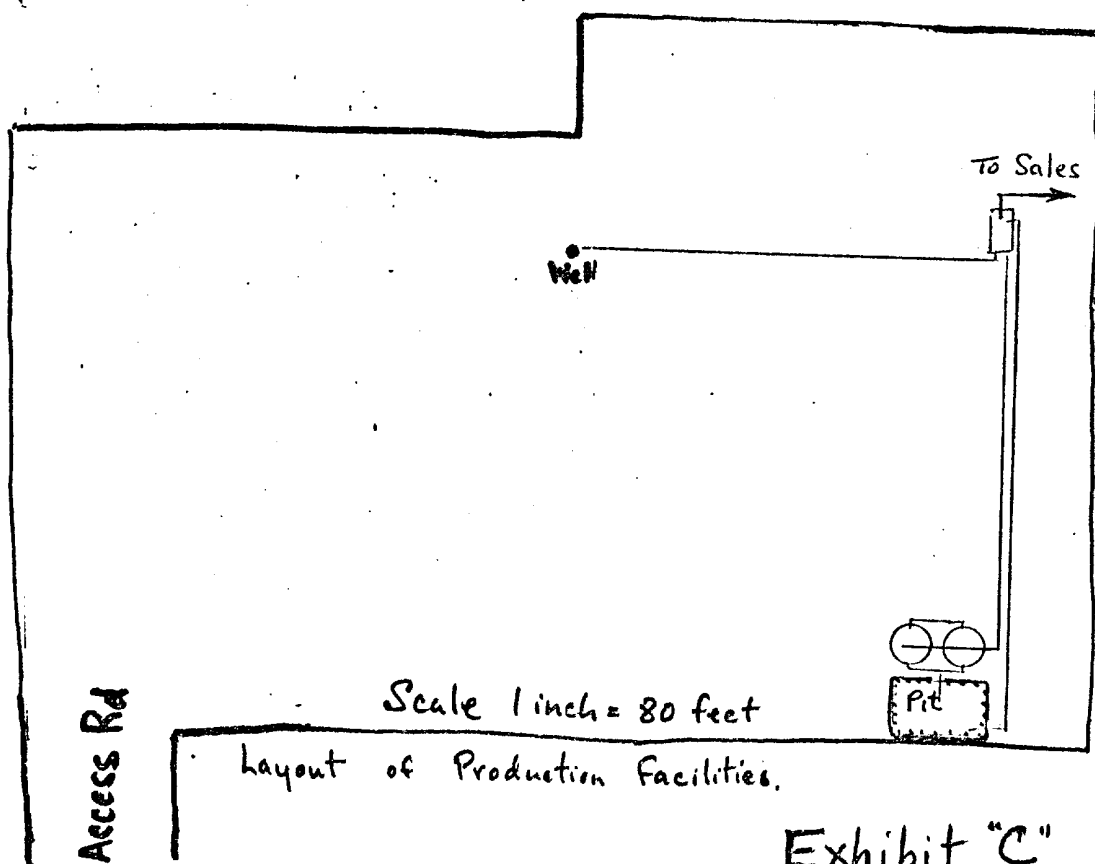
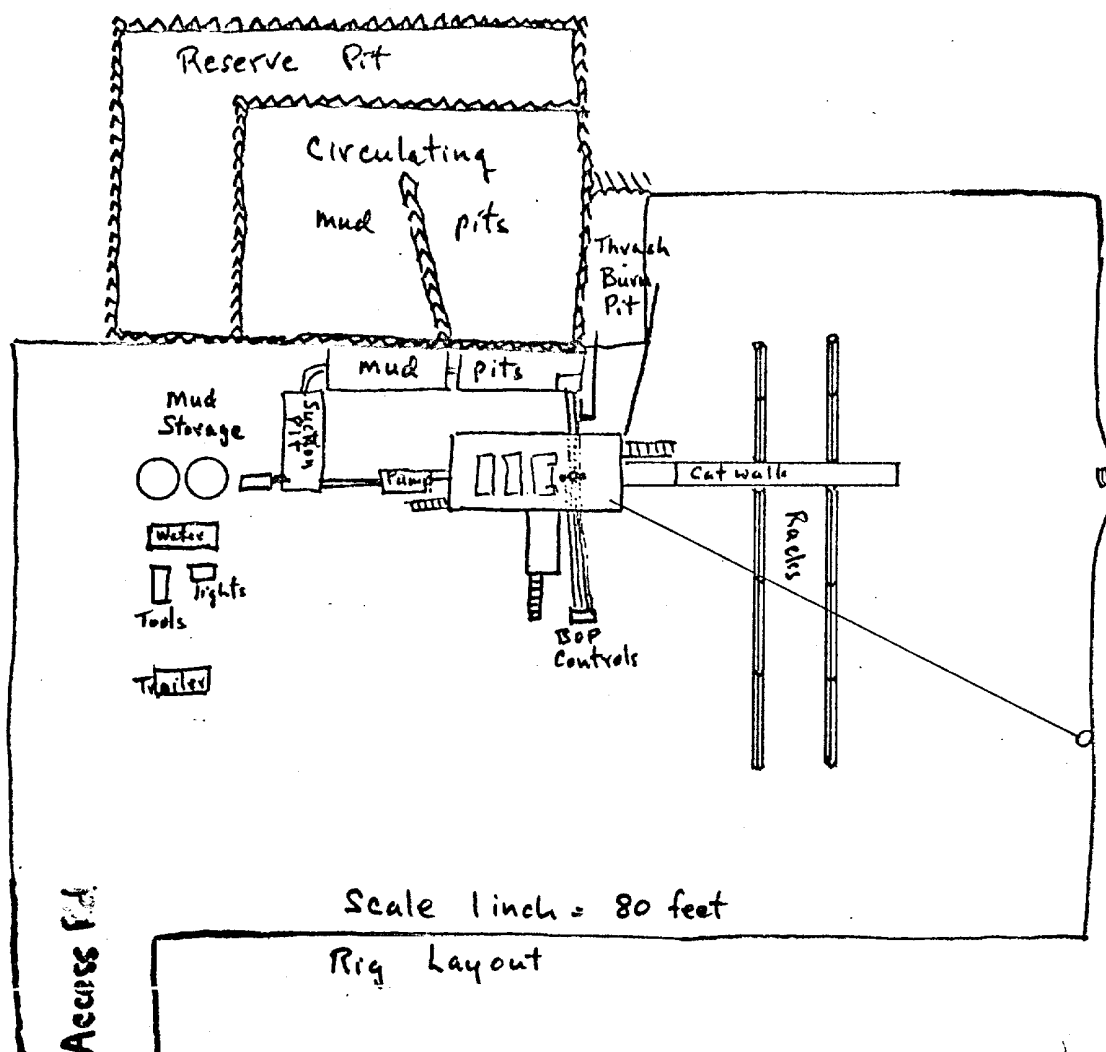
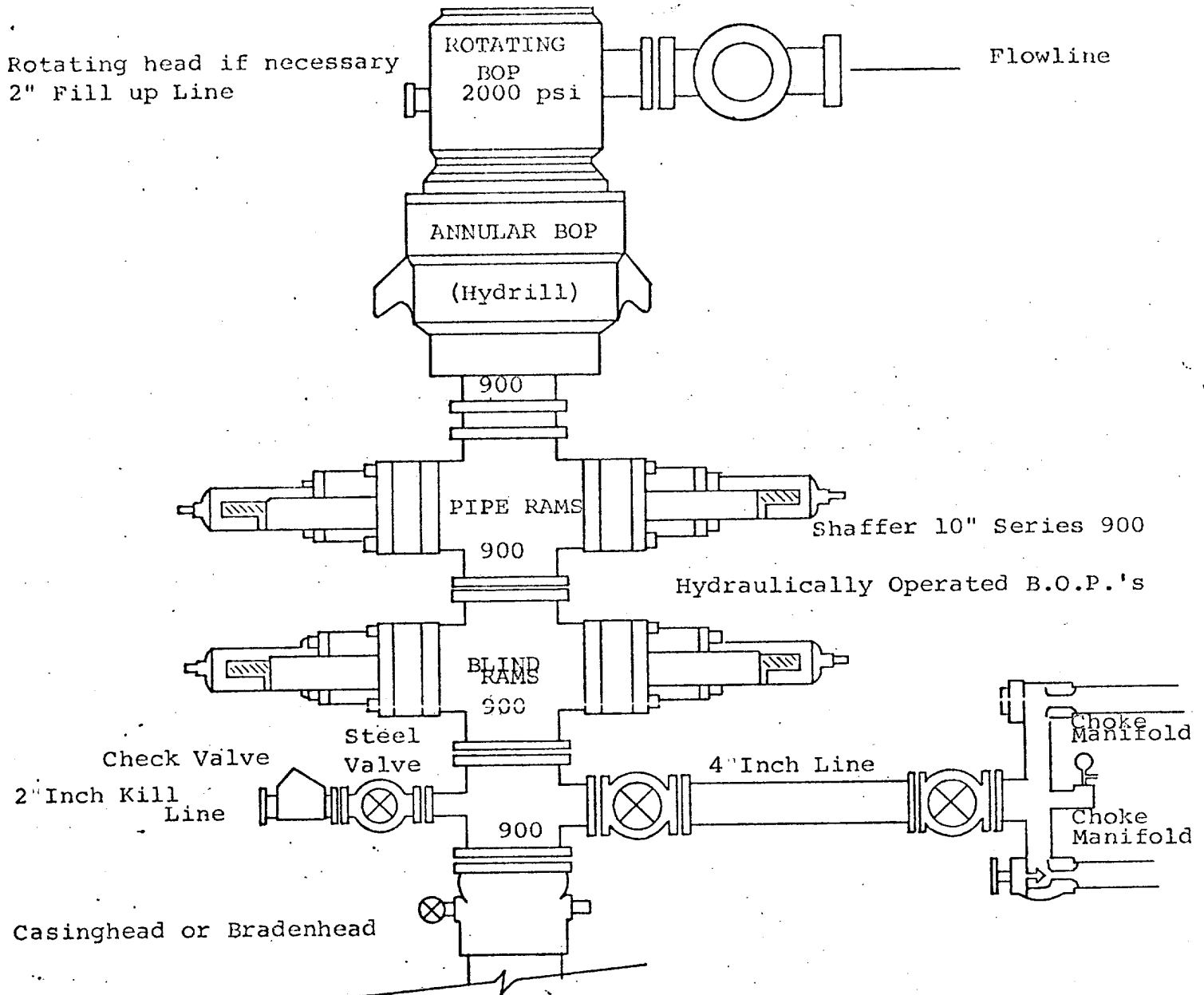


Exhibit "C"



THE FOLLOWING CONSTITUTE MINIMUM BLOWOUT PREVENTER REQUIREMENTS

1. All preventers to be hydraulically operated with secondary manual controls installed prior to drilling out from under casing.
2. Choke outlet to be a minimum of 4" diameter.
3. Kill line to be of all steel construction of 2" minimum diameter.
4. All connections from operating manifolds to preventers to be all steel hole or tube a minimum of one inch in diameter.
5. The available closing pressure shall be at least 15% in excess of that required with sufficient volume to operate the B.O.P.'s.
6. All connections to and from preventer to have a pressure rating equivalent to that of the B.O.P.'s.
7. Inside blowout preventer to be available on rig floor.
8. Operating controls located a safe distance from the rig floor.
9. Hole must be kept filled on trips below intermediate casing. Operator not responsible for blowouts resulting from not keeping hole full.
10. D. P. float must be installed and used below zone of first gas intrusion.