

NO. OF COPIES RECEIVED	
DISTRIBUTION	
SANTA FE	
FILE	
U.S.G.S.	
LAND OFFICE	
OPERATOR	

NEW MEXICO OIL CONSERVATION COMMISSION

RECEIVED

NOV 20 1975

O. C. C.

ARTESIA OFFICE

APPLICATION FOR PERMIT TO DRILL, DEEPEN, OR PLUG BACK

1a. Type of Work		7. Unit Agreement Name	
b. Type of Well DRILL <input checked="" type="checkbox"/> DEEPEN <input type="checkbox"/> PLUG BACK <input type="checkbox"/> OIL WELL <input checked="" type="checkbox"/> GAS WELL <input type="checkbox"/> OTHER <input type="checkbox"/> SINGLE ZONE <input type="checkbox"/> MULTIPLE ZONE <input type="checkbox"/>		8. Farm or Lease Name Dayton "EZ"	
2. Name of Operator Yates Petroleum Corporation ✓		9. Well No. 1	
3. Address of Operator 207 South 4th Street- Artesia, NM 88210		10. Field and Pool, or Wildcat Atoka (S.A.)	
4. Location of Well UNIT LETTER H LOCATED 2310 FEET FROM THE North LINE 330 East 21 18S 26E AND FEET FROM THE LINE OF SEC. TWP. RGE. NMPM		12. County Eddy	
21. Elevations (Show whether DF, RT, etc.) 3353'		19. Proposed Depth Approx. 1800'	19A. Formation San Andres
21A. Kind & Status Plug. Bond Blanket	21B. Drilling Contractor Byrd Drilling Co.	20. Rotary or C.T. Rotary	
22. Approx. Date Work will start As soon as approved			

23.

PROPOSED CASING AND CEMENT PROGRAM

SIZE OF HOLE	SIZE OF CASING	WEIGHT PER FOOT	SETTING DEPTH	SACKS OF CEMENT	EST. TOP
15"	10-3/4"	32#	Approx. 400'	Circulate	
9 1/2"	7"	20#	" 1240'	Circulate	
6 1/4"	4 1/2 & 5 1/2"	9.5 & 15.5#	" 1800'	150 sxs	

It is our intention to drill a San Andres Test. Approximately 400' of surface casing will be run to shut off gravel and cavings, intermediate casing will be set 100' below the Artesian zone w/cement circulated. If production is encountered a tapered string of 4 1/2" & 5 1/2" production casing will be run, perforated and treated for production.

Mud Program: - FW Gel & LCM to 1240'. Fresh water to TD.

BOP Program: - BOP's will be installed on 7" casing and tested daily.

APPROVAL VALID
FOR 90 DAYS UNLESS
DRILLING COMMENCED,

EXPIRES 2-20-76

IN ABOVE SPACE DESCRIBE PROPOSED PROGRAM: IF PROPOSAL IS TO DEEPEN OR PLUG BACK, GIVE DATA ON PRESENT PRODUCTIVE ZONE AND PROPOSED NEW PRODUCTIVE ZONE. GIVE BLOWOUT PREVENTER PROGRAM, IF ANY.

I hereby certify that the information above is true and complete to the best of my knowledge and belief.

Signed Christine Tomlinson Title Geol. Secty Date 11-19-75

(This space for State Use)

APPROVED BY W. A. Gussitt TITLE SUPERVISOR, DISTRICT II DATE NOV 20 1975

CONDITIONS OF APPROVAL, IF ANY:

Cement must be circulated to
surface behind 10 3/4" & 7" casing

Notify N.M.O.C.C. in sufficient
time to witness cementing
the 7" casing

NEW MEXICO OIL CONSERVATION COMMISSION
WELL LOCATION AND ACREAGE DEDICATION AT

Form C-102
Supersedes C-128
Effective 1-1-65

All distances must be from the outer boundaries of the Section.

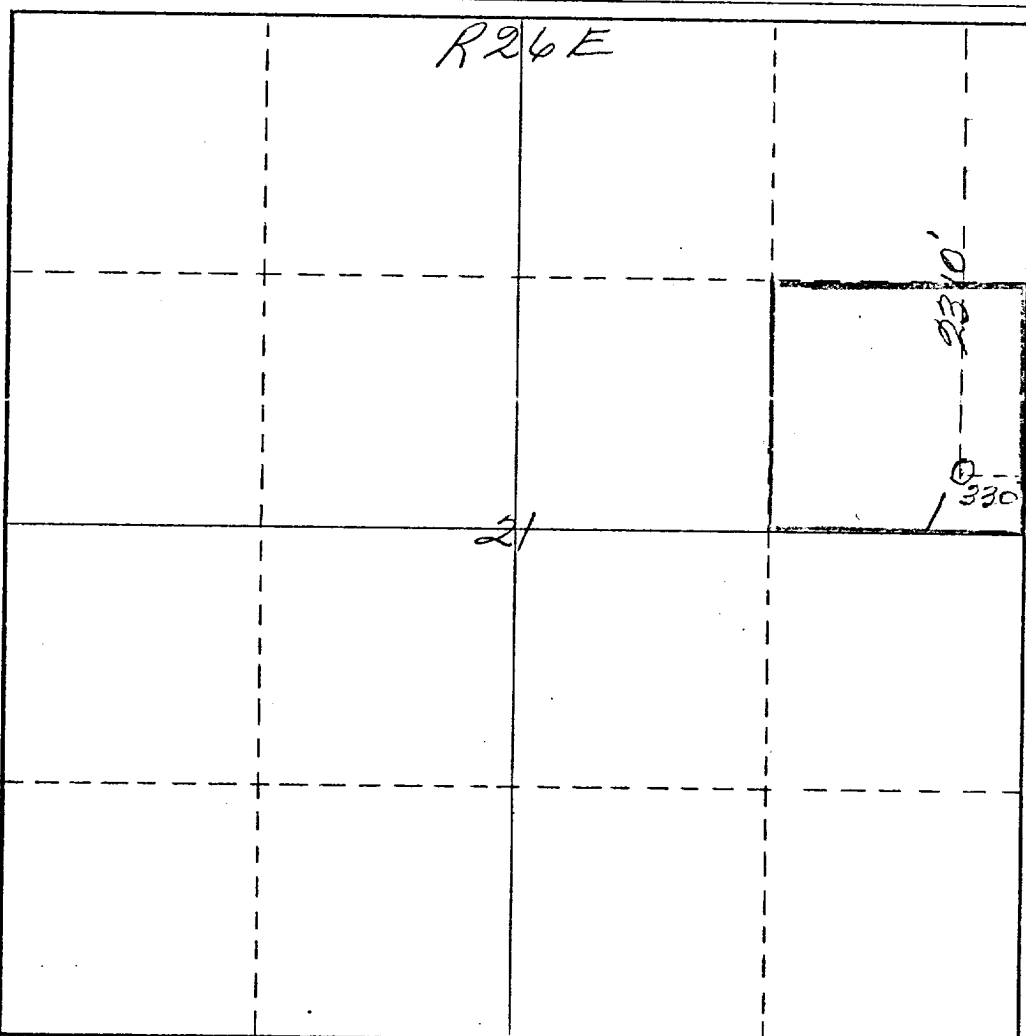
Operator <i>Yates Petroleum Corp</i>		Lease <i>Dayton ET</i>		Well No. <i>1</i>	
Unit Letter <i>H</i>	Section <i>21</i>	Township <i>18 South</i>	Range <i>26 East</i>	County <i>Eddy</i>	
Actual Footage Location of Well: <i>2310</i> feet from the <i>North</i> line and <i>330</i> feet from the <i>East</i> line					
Ground Level Elev. <i>3353</i>	Producing Formation <i>San Andres</i>		Pool <i>Atoka (S. A.)</i>		Dedicated Acreage: <i>2/0</i> Acres

1. Outline the acreage dedicated to the subject well by colored pencil or hatchure marks on the plat below.
2. If more than one lease is dedicated to the well, outline each and identify the ownership thereof (both as to working interest and royalty).
3. If more than one lease of different ownership is dedicated to the well, have the interests of all owners been consolidated by communitization, unitization, force-pooling, etc?

☐ Yes ☐ No If answer is "yes," type of consolidation _____

If answer is "no," list the owners and tract descriptions which have actually been consolidated. (Use reverse side of this form if necessary.) _____

No allowable will be assigned to the well until all interests have been consolidated (by communitization, unitization, forced-pooling, or otherwise) or until a non-standard unit, eliminating such interests, has been approved by the Commission.



CERTIFICATION

I hereby certify that the information contained herein is true and complete to the best of my knowledge and belief.

Eddie M. Mahfood
Name
Eddie M. Mahfood

Position
Engineer

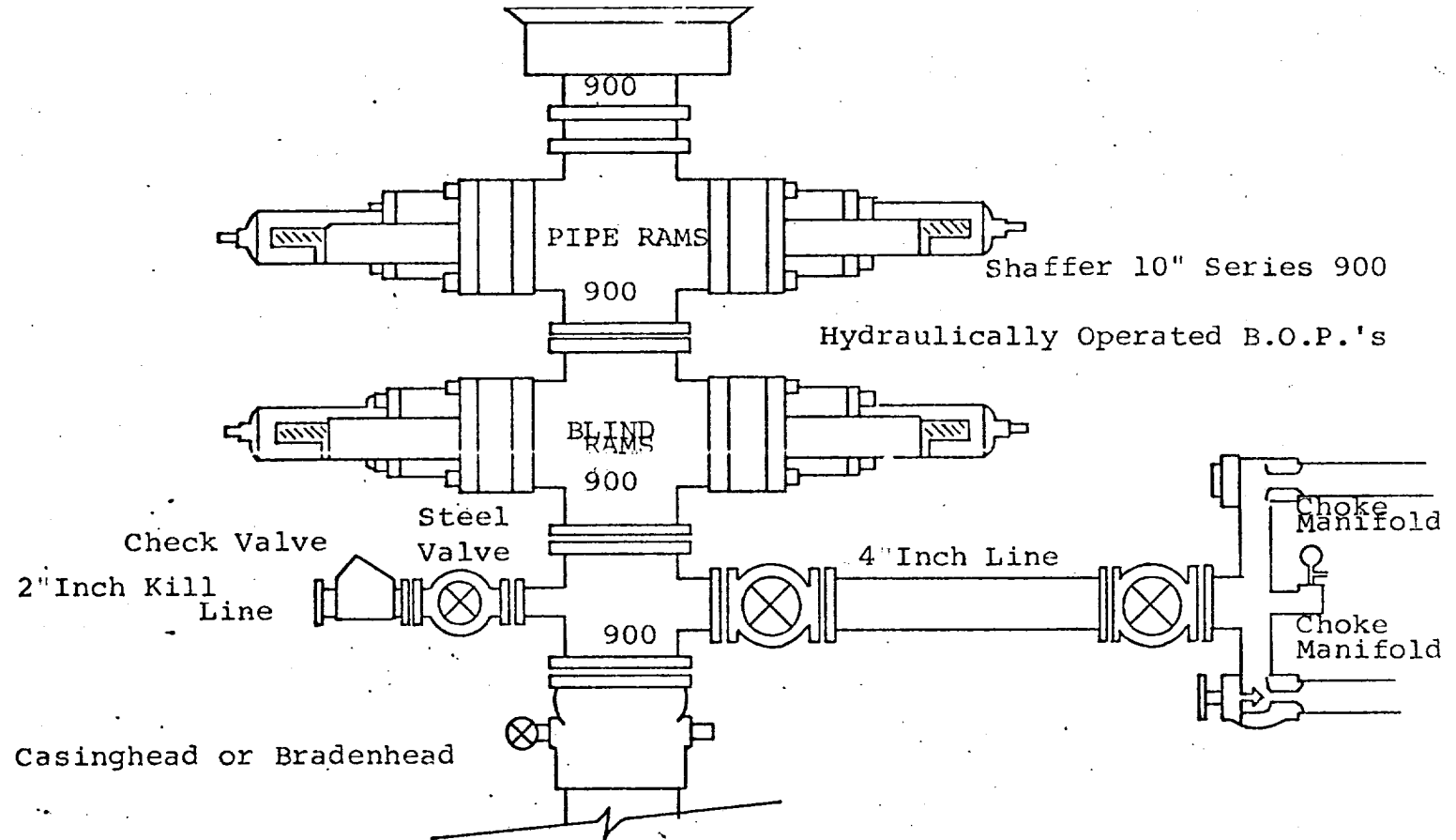
Company
Yates Pet. Corp.

Date
11-19-75

I hereby certify that the well location shown on this plat was plotted from field notes of actual surveys made by me or under my supervision and that the same is true and correct to the best of my knowledge and belief.

Date Surveyed
October 25th 1975
Registered Professional Engineer
and/or Land Surveyor

James H. Brown
Certificate No. *542*



THE FOLLOWING CONSTITUTE MINIMUM BLOWOUT PREVENTER REQUIREMENTS

1. All preventers to be hydraulically operated with secondary manual controls installed prior to drilling out from under casing.
2. Choke outlet to be a minimum of 4" diameter.
3. Kill line to be of all steel construction of 2" minimum diameter.
4. All connections from operating manifolds to preventers to be all steel hole or tube a minimum of one inch in diameter.
5. The available closing pressure shall be at least 15% in excess of that required with sufficient volume to operate the B.O.P.'s.
6. All connections to and from preventer to have a pressure rating equivalent to that of the B.O.P.'s.
7. Inside blowout preventer to be available on rig floor.
8. Operating controls located a safe distance from the rig floor.
9. Hole must be kept filled on trips below intermediate casing. Operator not responsible for blowouts resulting from not keeping hole full.
10. D. P. float must be installed and used below zone of first gas intrusion.