

NO. OF COPIES RECEIVED	5
DISTRIBUTION	
SANTA FE	1
FILE	1
U.S.G.S.	2
LAND OFFICE	
OPERATOR	1

NEW MEXICO OIL CONSERVATION COMMISSION

RECEIVED

DEC 3 1975

30-015-21688  
Form C-101  
Revised 1-4-65

APPLICATION FOR PERMIT TO DRILL, DEEPEN, OR PLUG BACK C.C.

1a. Type of Work ARTESIA, OFFICE		5A. Indicate Type of Lease STATE <input type="checkbox"/> FEE <input checked="" type="checkbox"/>	
b. Type of Well OIL WELL <input checked="" type="checkbox"/> GAS WELL <input type="checkbox"/> OTHER <input type="checkbox"/> DEEPEN <input type="checkbox"/> PLUG BACK <input type="checkbox"/> SINGLE ZONE <input type="checkbox"/> MULTIPLE ZONE <input type="checkbox"/>		5. State Oil & Gas Lease No.	
2. Name of Operator Yates Petroleum Corporation ✓		7. Unit Agreement Name	
3. Address of Operator 207 So. 4th Street - Artesia, NM 88210		8. Form or Lease Name Dayton "EY"	
4. Location of Well UNIT LETTER P LOCATED 990 FEET FROM THE South LINE AND 990 FEET FROM THE East LINE OF SEC. 21 TWP. 18S RGE. 26E NMPM		9. Well No. 1	
		10. Field and Pool, or Wildcat Atoka (S.A.) Und	
		12. County Eddy	
19. Proposed Depth Approx. 1800'		19A. Formation San Andres	
20. Rotary or C.T. Rotary			
21. Elevations (Show whether DF, RT, etc.) 3370' GR		21A. Kind & Status Plug. Bond Blanket	
21B. Drilling Contractor Byrd Drilling Co.		22. Approx. Date Work will start As soon as approved	

PROPOSED CASING AND CEMENT PROGRAM

SIZE OF HOLE	SIZE OF CASING	WEIGHT PER FOOT	SETTING DEPTH	SACKS OF CEMENT	EST. TOP
15"	10-3/4"	32#	Approx 400'	Circulate	
9 1/2"	7"	20#	1240'	Circulate	
6 1/4"	4 1/2" & 5 1/2"	9.5 & 15.5#	1800'	150 sxs	

It is our intention to drill a San Andres Test. Approximately 400' of surface casing will be run to shut off gravel and cavings, intermediate casing will be set 100' below the Artesian Zone w/cement circulated. If production is encountered a tapered string of 5 1/2" and 4 1/2" production casing will be run, perforated and treated for production.

Mud Program: - FW Gel & LCM to 1240'. Fresh water to TD.

BOP Program: - BOP's will be installed on 7" casing and tested daily.

APPROVAL VALID  
FOR 90 DAYS UNLESS  
DRILLING COMMENCED,

EXPIRES 3-4-76

IN ABOVE SPACE DESCRIBE PROPOSED PROGRAM; IF PROPOSAL IS TO DEEPEN OR PLUG BACK, GIVE DATA ON PRESENT PRODUCTIVE ZONE AND PROPOSED NEW PRODUCTIVE ZONE. GIVE BLOWOUT PREVENTER PROGRAM, IF ANY.

I hereby certify that the information above is true and complete to the best of my knowledge and belief.

Signed Christie Tomlinson Title Geol. Secty Date 12-3-75

(This space for State Use)

APPROVED BY W.A. Grasset TITLE SUPERVISOR, DISTRICT II DATE DEC 4 1975

CONDITIONS OF APPROVAL, IF ANY:

Cement must be circulated to  
surface behind 10 3/4" 47" casing

Notify N.M.O.C.C. in sufficient  
time to witness cementing  
the 7" casing

NEW MEXICO OIL CONSERVATION COMMISSION  
WELL LOCATION AND ACREAGE DEDICATION PLAT

Form C-102  
Supersedes C-128  
Effective 1-1-65

All distances must be from the outer boundaries of the Section.

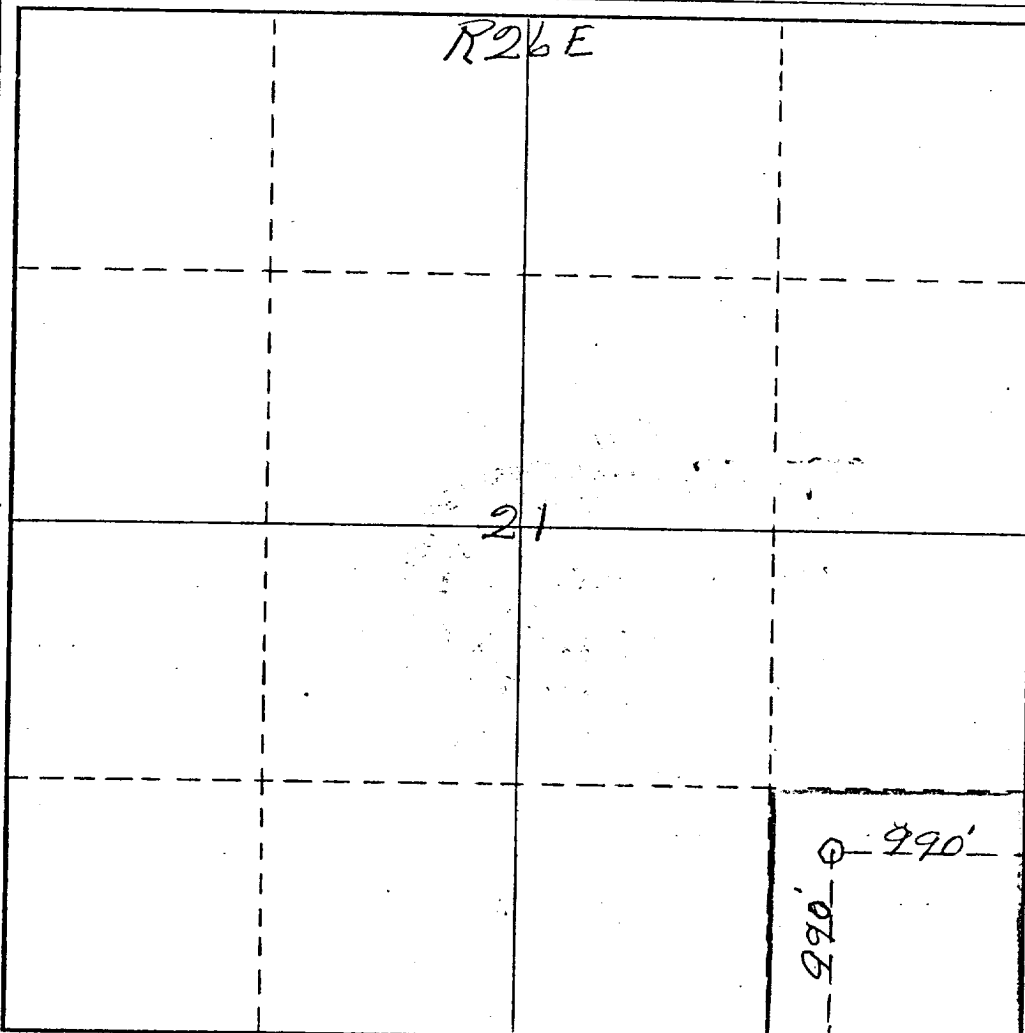
Operator <i>Yates Petroleum Corp</i>			Lease <i>Dayton EY</i>			Well No. <i>1</i>		
Unit Letter <i>P</i>	Section <i>21</i>	Township <i>18 South</i>	Range <i>26 East</i>	County <i>Eddy</i>				
Actual Footage Location of Well: <i>990</i> feet from the <i>South</i> line and <i>990</i> feet from the <i>East</i> line								
Ground Level Elev. <i>3370</i>		Producing Formation <i>San Andres</i>		Pool <i>Atoka (S.A.)</i>		Dedicated Acreage: <i>40</i> Acres		

1. Outline the acreage dedicated to the subject well by colored pencil or hachure marks on the plat below.
2. If more than one lease is dedicated to the well, outline each and identify the ownership thereof (both as to working interest and royalty).
3. If more than one lease of different ownership is dedicated to the well, have the interests of all owners been consolidated by communitization, unitization, force-pooling, etc?

☐ Yes ☐ No If answer is "yes," type of consolidation \_\_\_\_\_

If answer is "no," list the owners and tract descriptions which have actually been consolidated. (Use reverse side of this form if necessary.) \_\_\_\_\_

No allowable will be assigned to the well until all interests have been consolidated (by communitization, unitization, forced-pooling, or otherwise) or until a non-standard unit, eliminating such interests, has been approved by the Commission.



CERTIFICATION

I hereby certify that the information contained herein is true and complete to the best of my knowledge and belief.

*Eddie M. Mahfood*  
Name  
Eddie M. Mahfood

Position  
Engineer

Company  
Yates Petroleum Corp.

Date  
12-3-75

I hereby certify that the well location shown on this plat was plotted from field notes of *James H. Brown* made on or under my supervision, and that the same is true and correct to the best of my knowledge and belief.

*James H. Brown*  
Date Surveyed  
October 25, 1975

Registered Professional Engineer  
and/or Land Surveyor

*James H. Brown*  
Certificate No.  
542

