

NO. OF COPIES RECEIVED	5
DISTRIBUTION	
SANTA FE	1
FILE	1
U.S.G.S.	2
LAND OFFICE	
OPERATOR	1

NEW MEXICO OIL CONSERVATION COMMISSION

RECEIVED

DEC 15 1975

30-015-21703

Form C-101
Revised 1-1-65

5A. Indicate Type of Lease	STATE <input type="checkbox"/>	FEE <input checked="" type="checkbox"/>
5. State Oil & Gas Lease No.		

APPLICATION FOR PERMIT TO DRILL, DEEPEN, OR PLUG BACK.

1a. Type of Work		ARTESIA, OFFICE		7. Unit Agreement Name	
b. Type of Well		DEEPEN <input type="checkbox"/>		8. Farm or Lease Name	
OIL WELL <input checked="" type="checkbox"/>		PLUG BACK <input type="checkbox"/>		Gushwa "DX"	
GAS WELL <input type="checkbox"/>		SINGLE ZONE <input type="checkbox"/>		9. Well No.	
OTHER <input type="checkbox"/>		MULTIPLE ZONE <input type="checkbox"/>		1	
2. Name of Operator				10. Field and Pool, or Wildcat	
Yates Petroleum Corporation				Und	
3. Address of Operator				Atoka S. A.	
207 South 4th Street - Artesia, NM 88210					
4. Location of Well		UNIT LETTER J		LOCATED 2240	
		FEET FROM THE		South	
AND 2310		FEET FROM THE		East	
		LINE OF SEC.		21	
		TWP.		18S	
		RGE.		26E	
		NMPM			
				12. County	
				Eddy	
				19. Proposed Depth	
				Approx 1800'	
				19A. Formation	
				San Andres	
				20. Rotary or C.T.	
				Rotary	
21. Elevations (Show whether DF, RT, etc.)		21A. Kind & Status Plug. Bond		22. Approx. Date Work will start	
3368'		Blanket		Byrd Drilling Co.	
				As soon as approved	

23.

PROPOSED CASING AND CEMENT PROGRAM

SIZE OF HOLE	SIZE OF CASING	WEIGHT PER FOOT	SETTING DEPTH	SACKS OF CEMENT	EST. TOP
15"	10-3/4"	32#	Approx 400'	Circulate	
9-7/8"	7"	20#	" 1240'	Circulate	
6 1/4"	4 1/2 & 5 1/2"	9.5 & 15.5#	" 1800'	150 sxs	

It is our intention to drill a San Andres Test. Approximately 400' of surface casing will be run to shut off gravel and cavings, intermediate casing will be set 100' below the Artesian Zone w/cement circulated. If production is encountered a tapered string of 4 1/2" and 5 1/2" production casing will be run, perforated and treated for production.

Mud Program: - FW Gel & LCM to 1240'. Fresh water to TD.

BOP Program: - BOP's will be installed on 7" casing and tested daily.

APPROVAL VALID
FOR 90 DAYS UNLESS
DRILLING COMMENCED,

IN ABOVE SPACE DESCRIBE PROPOSED PROGRAM: IF PROPOSAL IS TO DEEPEN OR PLUG BACK, GIVE DATA ON PRESENT PRODUCTIVE ZONE AND PROPOSED NEW PRODUCTIVE ZONE. GIVE BLOWOUT PREVENTER PROGRAM, IF ANY.

I hereby certify that the information above is true and complete to the best of my knowledge and belief.

Signed Christine Tomlinson Title Geol. Secty Date 12-12-75

(This space for State Use)

APPROVED BY W.A. Gressett TITLE SUPERVISOR, DISTRICT II DATE DEC 15 1975

CONDITIONS OF APPROVAL, IF ANY:

Notify N.M.O.C.C. in sufficient
time to witness cementing
the 7" casing

Complete to be checked and
surface casing 10 3/4" & 7" casing

NE MEXICO OIL CONSERVATION COMMISSION
WELL LOCATION AND ACREAGE DEDICATION PLAT

Form C-102
Supersedes C-128
Effective 1-1-65

All distances must be from the outer boundaries of the Section.

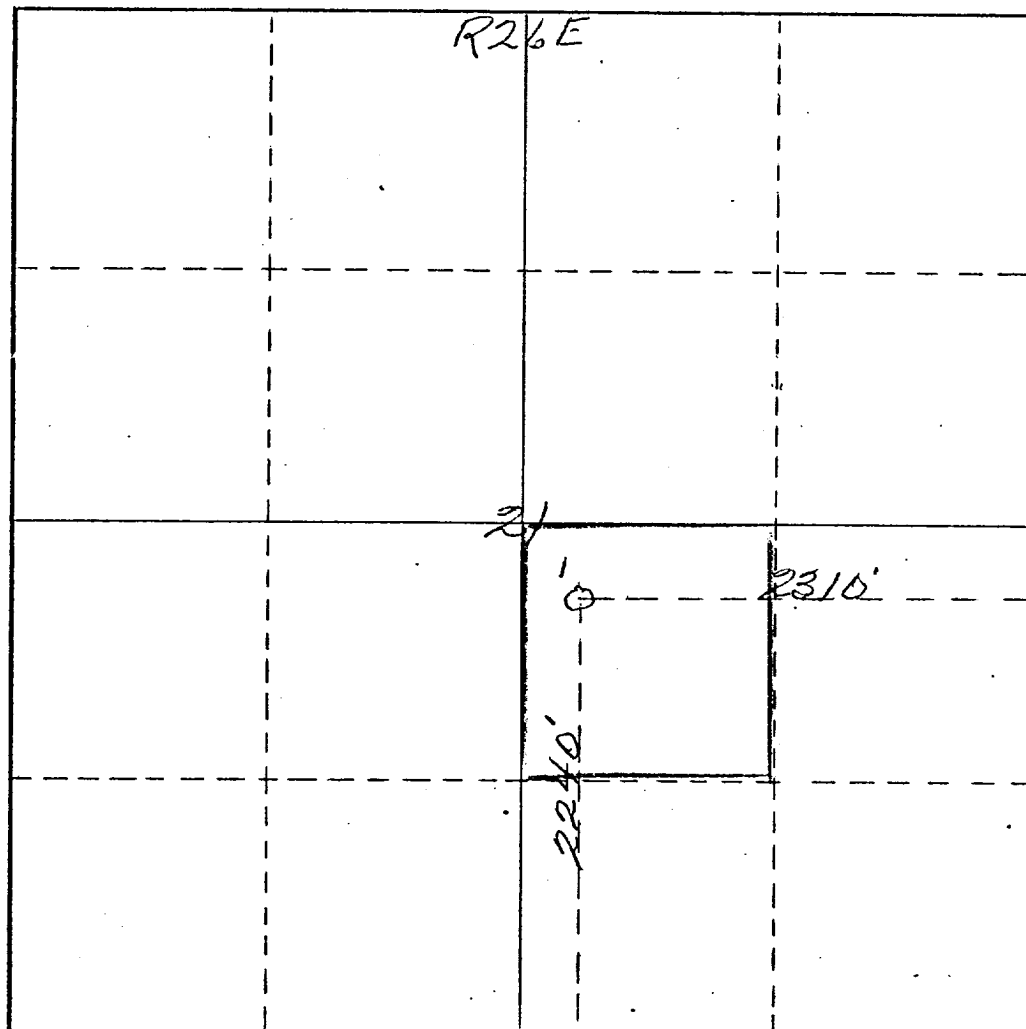
Operator <i>Yates Petroleum Corporation</i>			Lease <i>Gustawa "DX"</i>		Well No. <i>1</i>
Unit Letter <i>J</i>	Section <i>21</i>	Township <i>18 South</i>	Range <i>26 East</i>	County <i>Eddy</i>	
Actual Footage Location of Well: <i>2240</i> feet from the <i>South</i> line and <i>2310</i> feet from the <i>East</i> line					
Ground Level Elev. <i>2368</i>	Producing Formation <i>San Andres</i>		Pool <i>Atoka (S.A.)</i>	Dedicated Acreage: <i>40</i> Acres	

1. Outline the acreage dedicated to the subject well by colored pencil or hachure marks on the plat below.
2. If more than one lease is dedicated to the well, outline each and identify the ownership thereof (both as to working interest and royalty).
3. If more than one lease of different ownership is dedicated to the well, have the interests of all owners been consolidated by communitization, unitization, force-pooling, etc?

☐ Yes ☐ No If answer is "yes," type of consolidation _____

If answer is "no," list the owners and tract descriptions which have actually been consolidated. (Use reverse side of this form if necessary.) _____

No allowable will be assigned to the well until all interests have been consolidated (by communitization, unitization, forced-pooling, or otherwise) or until a non-standard unit, eliminating such interests, has been approved by the Commission.



CERTIFICATION

I hereby certify that the information contained herein is true and complete to the best of my knowledge and belief.

Name
Eddie M. Mahfood

Position
Engineer

Company
Yates Petroleum Corp.

Date
12-12-75

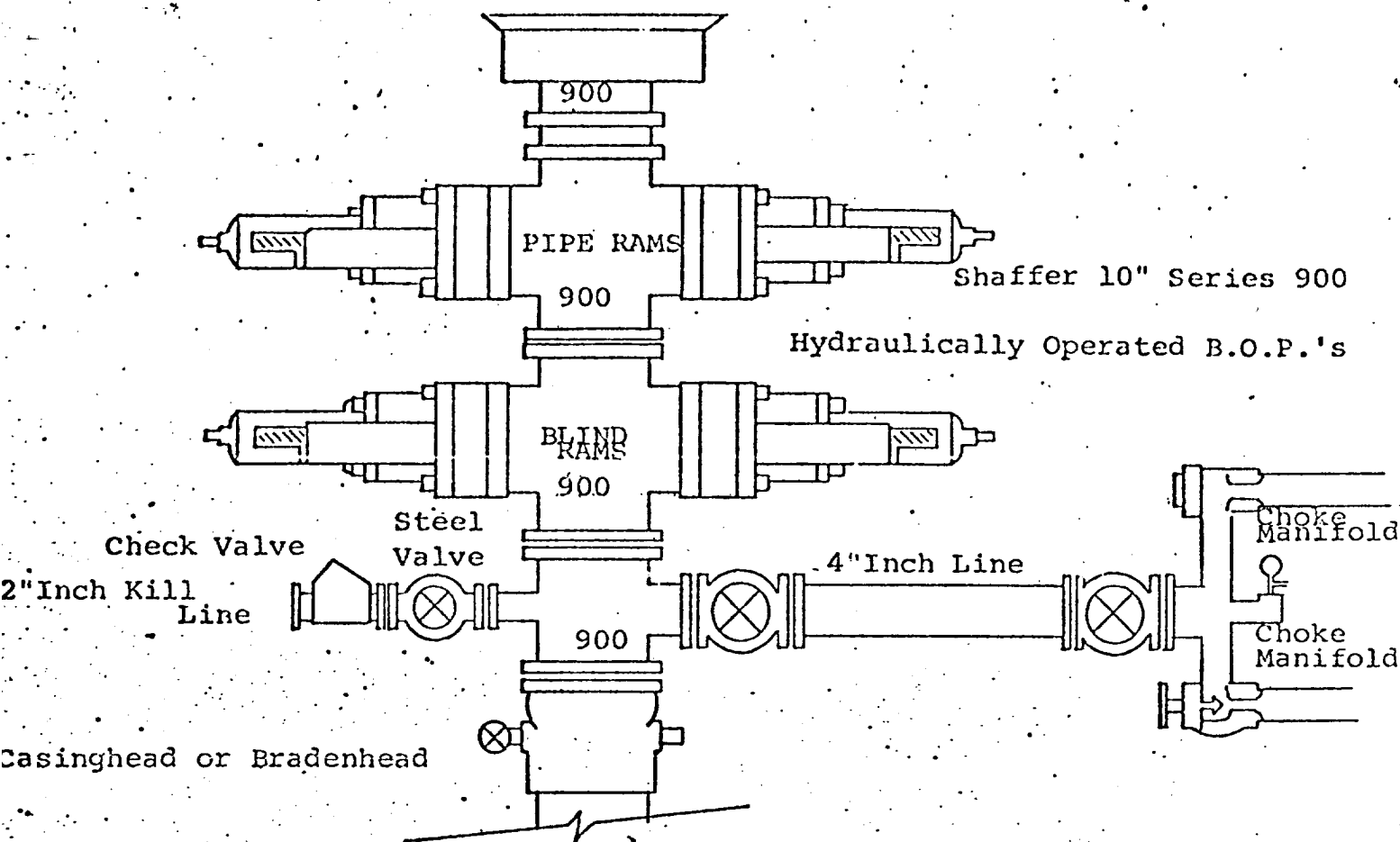
I hereby certify that the well location shown on this plat was plotted from field notes of actual surveys made by me or under my supervision, and that the same is true and correct to the best of my knowledge and belief.

JAMES H. BROWN

Date Surveyed
October 25th 1975
Registered Professional Engineer
and/or Land Surveyor

James H. Brown
Certificate No. *542*

0 330 660 990 1320 1650 1980 2310 2640 2000 1500 1000 500



THE FOLLOWING CONSTITUTE MINIMUM BLOWOUT PREVENTER REQUIREMENTS

1. All preventers to be hydraulically operated with secondary manual controls installed prior to drilling out from under casing.
2. Choke outlet to be a minimum of 4" diameter.
3. Kill line to be of all steel construction of 2" minimum diameter.
4. All connections from operating manifolds to preventers to be all steel. hole or tube a minimum of one inch in diameter.
5. The available closing pressure shall be at least 15% in excess of that required with sufficient volume to operate the B.O.P.'s.
6. All connections to and from preventer to have a pressure rating equivalent to that of the B.O.P.'s.
7. Inside blowout preventer to be available on rig floor.
8. Operating controls located a safe distance from the rig floor.
9. Hole must be kept filled on trips below intermediate casing. Operator not responsible for blowouts resulting from not keeping hole full.
10. D. P. float must be installed and used below zone of first gas intrusion.