

NO. OF COPIES RECEIVED	6
DISTRIBUTION	
SANTA FE	1
FILE	1
U.S.G.S.	2
LAND OFFICE	
OPERATOR	2

RECEIVED
NEW MEXICO OIL CONSERVATION COMMISSION

JAN 27 1976

O. C. C.
ARTESIA, OFFICE

30-015-21726

Form C-101
Revised 1-4-65

5A. Indicate Type of Lease	
STATE <input type="checkbox"/>	FEE <input checked="" type="checkbox"/>
5. State Oil & Gas Lease No.	

APPLICATION FOR PERMIT TO DRILL, DEEPEN, OR PLUG BACK

1a. Type of Work		7. Unit Agreement Name	
b. Type of Well DRILL <input checked="" type="checkbox"/> DEEPEN <input type="checkbox"/> PLUG BACK <input type="checkbox"/>		8. Farm or Lease Name Dayton "FH"	
OIL WELL <input checked="" type="checkbox"/> GAS WELL <input type="checkbox"/> OTHER <input type="checkbox"/> SINGLE ZONE <input type="checkbox"/> MULTIPLE ZONE <input type="checkbox"/>		9. Well No. 1	
2. Name of Operator Yates Petroleum Corporation ✓		10. Field and Pool, or Wildcat Und. Atoka (S.A.)	
3. Address of Operator 207 South 4th Street - Artesia, NM 88210		12. County Eddy	
4. Location of Well UNIT LETTER <u>N</u> LOCATED <u>330</u> FEET FROM THE <u>South</u> LINE AND <u>2310</u> FEET FROM THE <u>West</u> LINE OF SEC. <u>21</u> TWP. <u>18S</u> RGE. <u>26E</u> NMPM			
19. Proposed Depth <u>1800</u>		19A. Formation <u>SAN Andres</u>	
20. Rotary or C.T. <u>Rotary</u>			
21. Elevations (Show whether DF, RT, etc.) <u>3400' GR</u>	21A. Kind & Status Plug. Bond <u>Blanket</u>	21B. Drilling Contractor <u>Bryd Drilling Co.</u>	22. Approx. Date Work will start <u>As soon as approved</u>

23.

PROPOSED CASING AND CEMENT PROGRAM

SIZE OF HOLE	SIZE OF CASING	WEIGHT PER FOOT	SETTING DEPTH	SACKS OF CEMENT	EST. TOP
15"	10-3/4"	32#	Approx 400'	Circulate	
9 1/2"	7"	24#	" 1200	Circulate	
6 1/4"	5 1/2 or 4 1/2"	9.5 or 15.5#	" 1800	150 sacks	

It is our intention to drill a San Andres Test. Approximately 400' of surface casing will be run to shut off gravel and cavings, intermediate casing will be set 100' below the Artesian Zone w/cement circulated. If production is encountered a tapered string of 5 1/2" and 4 1/2" production casing will be run, perforated and treated for production.

Mud Program: - FW Gel & LCM to 1200'. Fresh water to TD.

BOP Program: - BOP's will be installed on 7" casing and tested daily.

APPROVAL VALID
FOR 90 DAYS UNLESS
DRILLING COMMENCED,
EXPIRES 4-28-76

IN ABOVE SPACE DESCRIBE PROPOSED PROGRAM: IF PROPOSAL IS TO DEEPEN OR PLUG BACK, GIVE DATA ON PRESENT PRODUCTIVE ZONE AND PROPOSED NEW PRODUCTIVE ZONE. GIVE BLOWOUT PREVENTER PROGRAM, IF ANY.

I hereby certify that the information above is true and complete to the best of my knowledge and belief.

Signed Christine Lomheim Title Geol. Secty Date 1-26-76

(This space for State Use)

APPROVED BY W.A. Grasset TITLE SUPERVISOR, DISTRICT II DATE JAN 28 1976

CONDITIONS OF APPROVAL, IF ANY:

Cement must be circulated to
surface behind 10 3/4" x 7" casing

Notify N.M.O.C.C. in sufficient
time to witness cementing
the 7" casing

NEW MEXICO OIL CONSERVATION COMMISSION
WELL LOCATION AND ACREAGE DEDICATION PLAT

Form C-102
Supersedes C-128
Effective 1-1-65

All distances must be from the outer boundaries of the Section.

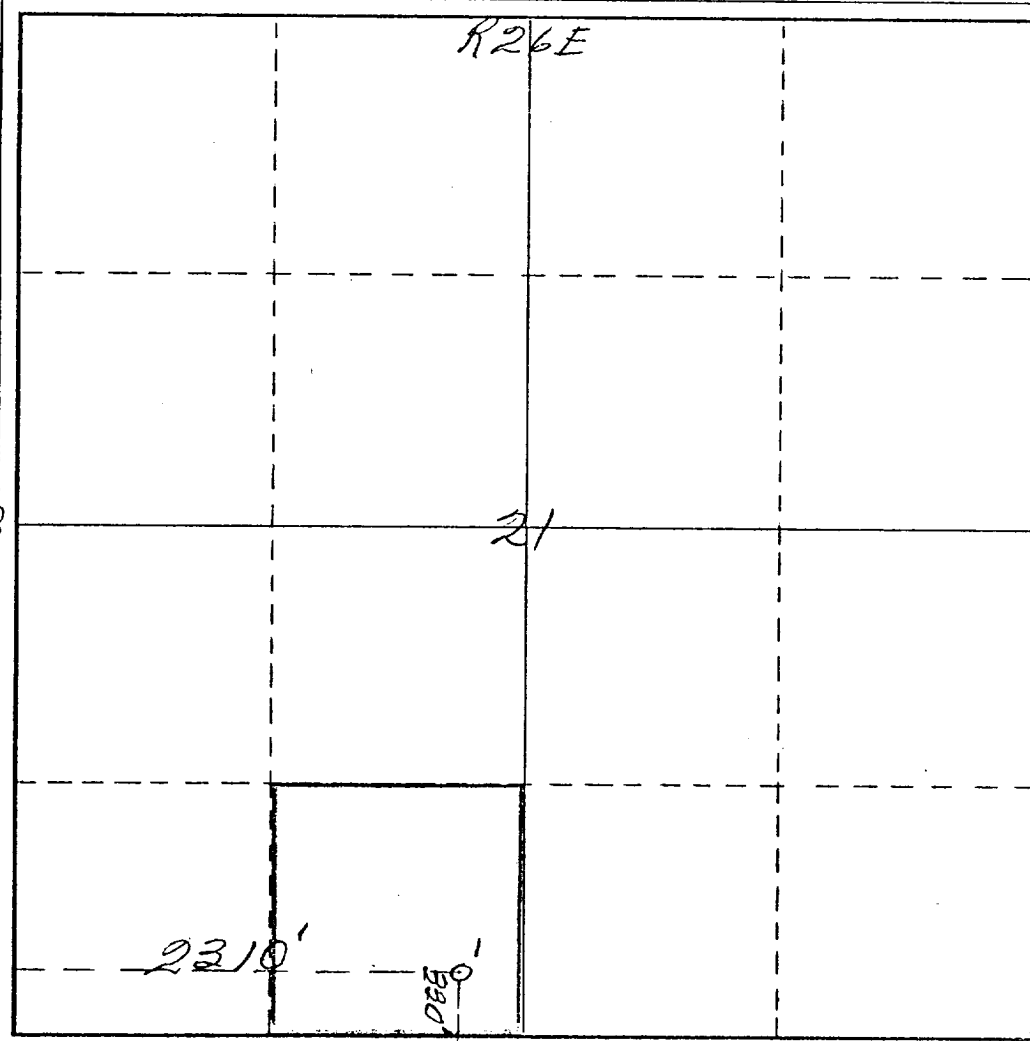
Operator <i>Yates Petroleum Corp</i>			Lease <i>Dayton Tract "FH"</i>			Well No. <i>1</i>
Unit Letter <i>N</i>	Section <i>21</i>	Township <i>18 South</i>	Range <i>26 East</i>	County <i>Eddy</i>		
Actual Footage Location of Well; <i>330</i> feet from the <i>South</i> line and <i>2310</i> feet from the <i>West</i> line						
Ground Level Elev. <i>3400</i>	Producing Formation <i>San Andres</i>		Pool <i>und. Atoka, S.A.</i>		Dedicated Acreage: <i>40</i> Acres	

1. Outline the acreage dedicated to the subject well by colored pencil or hatchure marks on the plat below.
2. If more than one lease is dedicated to the well, outline each and identify the ownership thereof (both as to working interest and royalty).
3. If more than one lease of different ownership is dedicated to the well, have the interests of all owners been consolidated by communitization, unitization, force-pooling, etc?

☐ Yes ☐ No If answer is "yes," type of consolidation _____

If answer is "no," list the owners and tract descriptions which have actually been consolidated. (Use reverse side of this form if necessary.) _____

No allowable will be assigned to the well until all interests have been consolidated (by communitization, unitization, forced-pooling, or otherwise) or until a non-standard unit, eliminating such interests, has been approved by the Commission.



CERTIFICATION

I hereby certify that the information contained herein is true and complete to the best of my knowledge and belief.

Name
Eddie M. Mahfood

Position
Engineer

Company
Yates Pet. Corporation

Date
1-26-76

I hereby certify that the well location shown on this plat was plotted from field notes of actual surveys made by me or under my supervision, and that the same is true and correct to the best of my knowledge and belief.

Date Surveyed

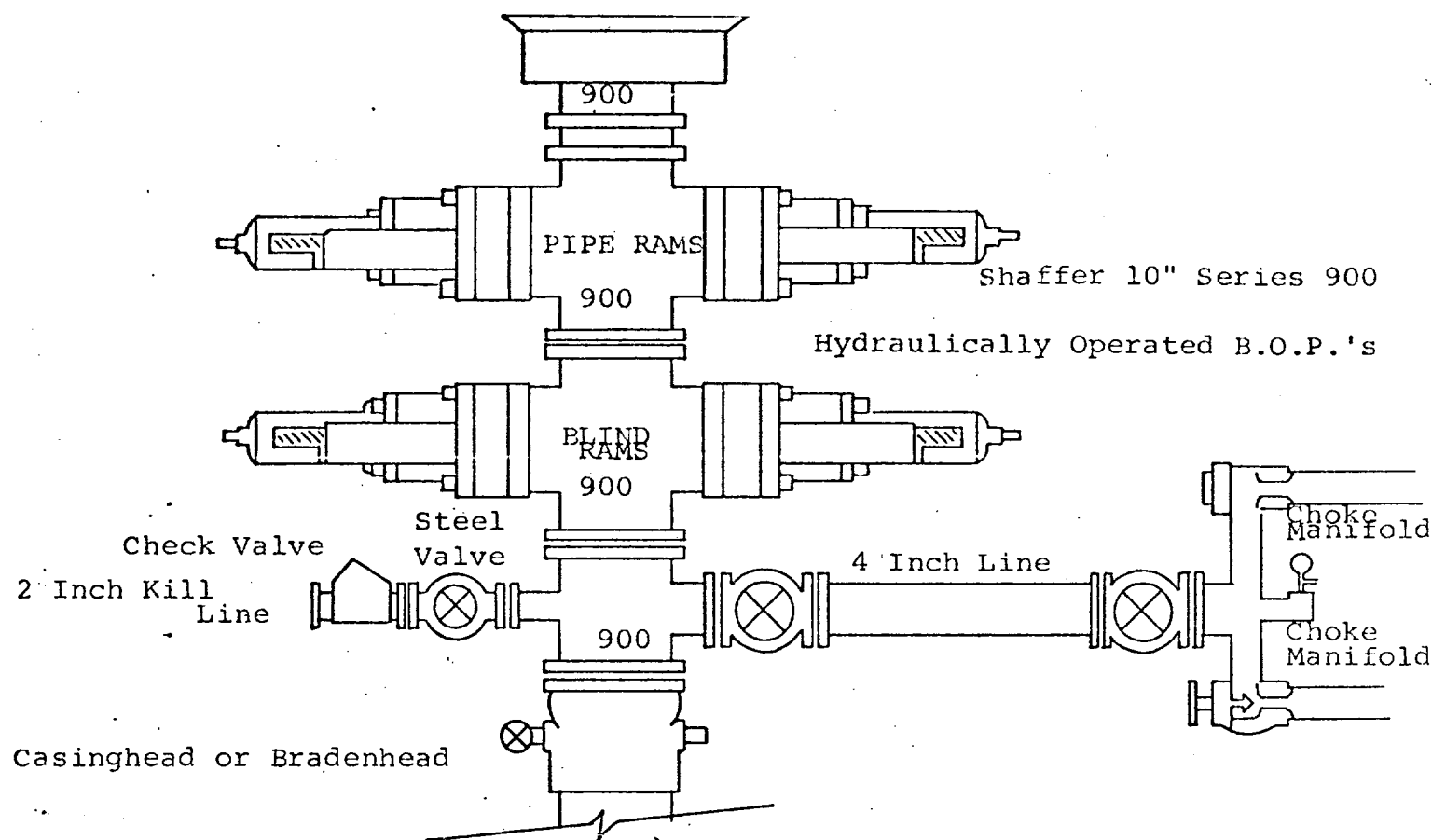
January 10th 1976

Registered Professional Engineer and/or Land Surveyor

Certificate No.

542

0 330 660 990 1320 1650 1980 2310 2640 2000 1500 1000 500



THE FOLLOWING CONSTITUTE MINIMUM BLOWOUT PREVENTER REQUIREMENTS

1. All preventers to be hydraulically operated with secondary manual controls installed prior to drilling out from under casing.
2. Choke outlet to be a minimum of 4" diameter.
3. Kill line to be of all steel construction of 2" minimum diameter.
4. All connections from operating manifolds to preventers to be all steel hole or tube a minimum of one inch in diameter.
5. The available closing pressure shall be at least 15% in excess of that required with sufficient volume to operate the B.O.P.'s.
6. All connections to and from preventer to have a pressure rating equivalent to that of the B.O.P.'s.
7. Inside blowout preventer to be available on rig floor.
8. Operating controls located a safe distance from the rig floor.
9. Hole must be kept filled on trips below intermediate casing. Operator not responsible for blowouts resulting from not keeping hole full.
10. D. P. float must be installed and used below zone of first gas intrusion.