

NO. OF COPIES RECEIVED	6
DISTRIBUTION	
SANTA FE	
FILE	
U.S.G.S.	
LAND OFFICE	
OPERATOR	

NEW MEXICO OIL CONSERVATION COMMISSION

**RECEIVED**

FEB 17 1976

Form C-101  
Revised 1-1-65

5A. Indicate Type of Lease  
STATE ☐ FEE ☒

5. State Oil & Gas Lease No.

**APPLICATION FOR PERMIT TO DRILL, DEEPEN, OR PLUG BACK**

1a. Type of Work DRILL <input checked="" type="checkbox"/> DEEPEN <input type="checkbox"/> PLUG BACK <input type="checkbox"/>		7. Unit Agreement Name
b. Type of Well OIL WELL <input checked="" type="checkbox"/> GAS WELL <input type="checkbox"/> OTHER <input type="checkbox"/> SINGLE ZONE <input type="checkbox"/> MULTIPLE ZONE <input type="checkbox"/>		8. Farm or Lease Name Dayton "FP"
2. Name of Operator Yates Petroleum Corporation ✓		9. Well No. 1
3. Address of Operator 207 South 4th Street-Artesia, NM 88210		10. Field and Pool, or Wildcat Und. Atoka S.A.
4. Location of Well UNIT LETTER G LOCATED 1650 FEET FROM THE East LINE AND 2310 FEET FROM THE North LINE OF SEC. 21 TWP. 18S RGE. 26E NMPM		12. County Eddy
19. Proposed Depth Approx. 1900'		19A. Formation San Andres
20. Rotary or C.T. Rotary		
21. Elevations (Show whether DF, RT, etc.) 3364' GR	21A. Kind & Status Plug. Bond Blanket	21B. Drilling Contractor Byrd Drilling Co.
22. Approx. Date Work will start As soon as approved		

**PROPOSED CASING AND CEMENT PROGRAM**

SIZE OF HOLE	SIZE OF CASING	WEIGHT PER FOOT	SETTING DEPTH	SACKS OF CEMENT	EST. TOP
15"	10-3/4"	32#	Approx 400'	Circulate	
9-7/8"	7"	20#	" 1200	Circulate	
6 1/4"	4 1/2 & 5 1/2"	9.5 & 15.5#	" 1900'	150 sacks	

It is our intention to drill a San Andres Test. Approximately 400' of surface casing will be run to shut off gravel and cavings, intermediate casing will be set 100' below the Artesian Zone w/cement circulated. If production is encountered a tapered string of 4 1/2 & 5 1/2" production casing will be run, perforated and treated for production.

**APPROVAL VALID  
FOR 90 DAYS UNLESS  
DRILLING COMMENCED,**

EXPIRES 5-19-76

IN ABOVE SPACE DESCRIBE PROPOSED PROGRAM: IF PROPOSAL IS TO DEEPEN OR PLUG BACK, GIVE DATA ON PRESENT PRODUCTIVE ZONE AND PROPOSED NEW PRODUCTIVE ZONE. GIVE BLOWOUT PREVENTER PROGRAM, IF ANY.

I hereby certify that the information above is true and complete to the best of my knowledge and belief.

Signed Christine J. Johnson Title Geol. Secty Date 2-17-76

(This space for State Use)

APPROVED BY W. A. Gressett TITLE SUPERVISOR, DISTRICT II DATE FEB 19 1976

CONDITIONS OF APPROVAL, IF ANY:

Cement must be circulated to  
surface behind 10 3/4" & 7" casing

Notify N.M.O.C.C. in sufficient  
time to witness cementing  
the 7" casing

NEW MEXICO OIL CONSERVATION COMMISSION  
WELL LOCATION AND ACREAGE DEDICATION AT

Form C-102  
Supersedes C-128  
Effective 1-1-65

All distances must be from the outer boundaries of the Section.

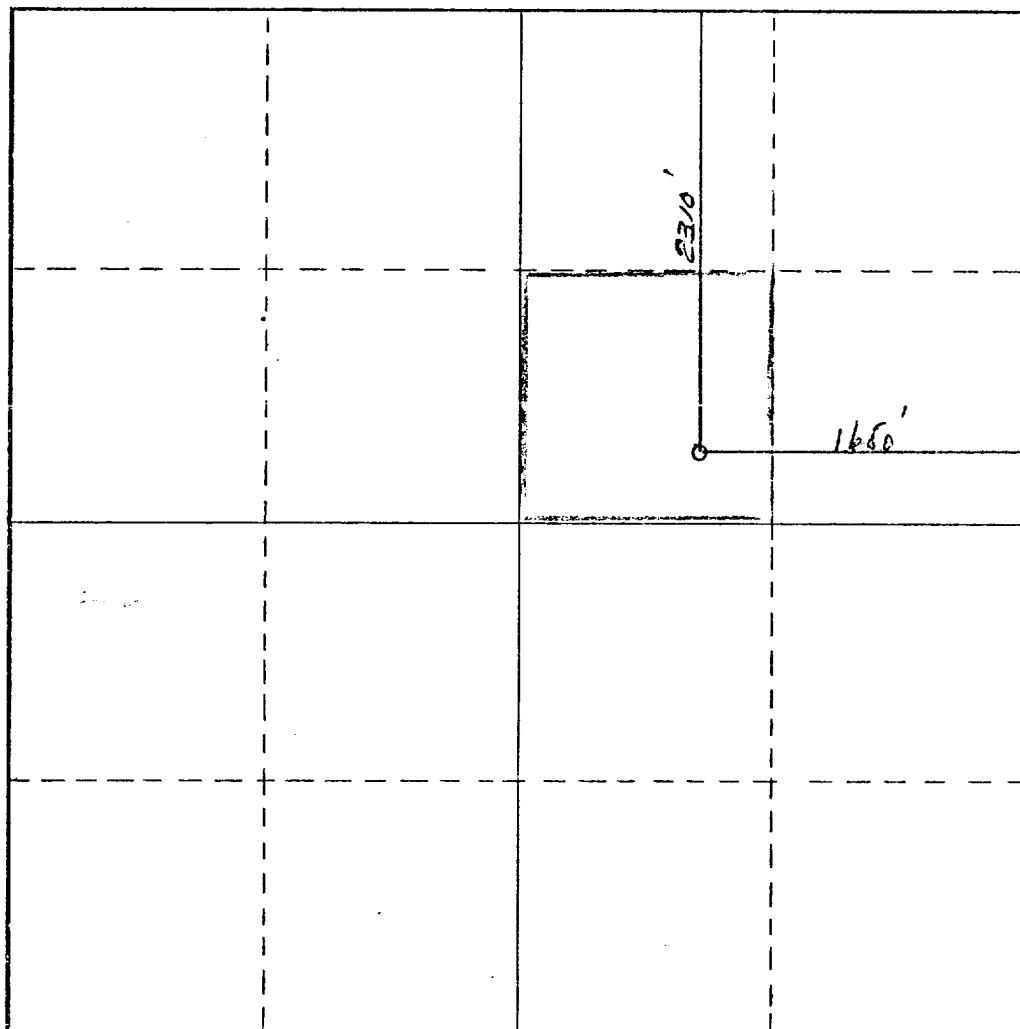
Operator <b>Yates Petroleum Corp.</b>		Lease <b>Dayton EP</b>		Well No. <b>#1</b>	
Unit Letter <b>G</b>	Section <b>21</b>	Township <b>18 South</b>	Range <b>26 East</b>	County <b>Eddy</b>	
Actual Footage Location of Well: <b>2310</b> feet from the <b>North</b> line and <b>1650</b> feet from the <b>East</b> line					
Ground Level Elev. <b>3364</b>	Producing Formation <b>San Andres</b>		Pool <b>Atolca S.A.</b>	Dedicated Acreage: <b>4.0</b> Acres	

1. Outline the acreage dedicated to the subject well by colored pencil or hatchure marks on the plat below.
2. If more than one lease is dedicated to the well, outline each and identify the ownership thereof (both as to working interest and royalty).
3. If more than one lease of different ownership is dedicated to the well, have the interests of all owners been consolidated by communitization, unitization, force-pooling, etc?

☒ Yes ☐ No If answer is "yes," type of consolidation To be communitized

If answer is "no," list the owners and tract descriptions which have actually been consolidated. (Use reverse side of this form if necessary.)

No allowable will be assigned to the well until all interests have been consolidated (by communitization, unitization, forced-pooling, or otherwise) or until a non-standard unit, eliminating such interests, has been approved by the Commission.



CERTIFICATION

I hereby certify that the information contained herein is true and complete to the best of my knowledge and belief.

*Eddie M. Mahfood*  
Name

Eddie M. Mahfood

Position  
Engineer

Company  
Yates Petroleum Corporation

Date  
2-17-76

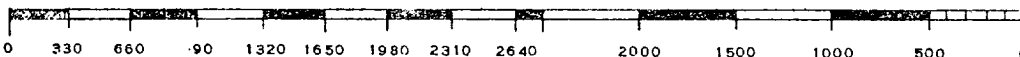
I hereby certify that the well location shown on this plat was plotted from field notes of actual surveys made by me or under my supervision, and that the same is true and correct to the best of my knowledge and belief.

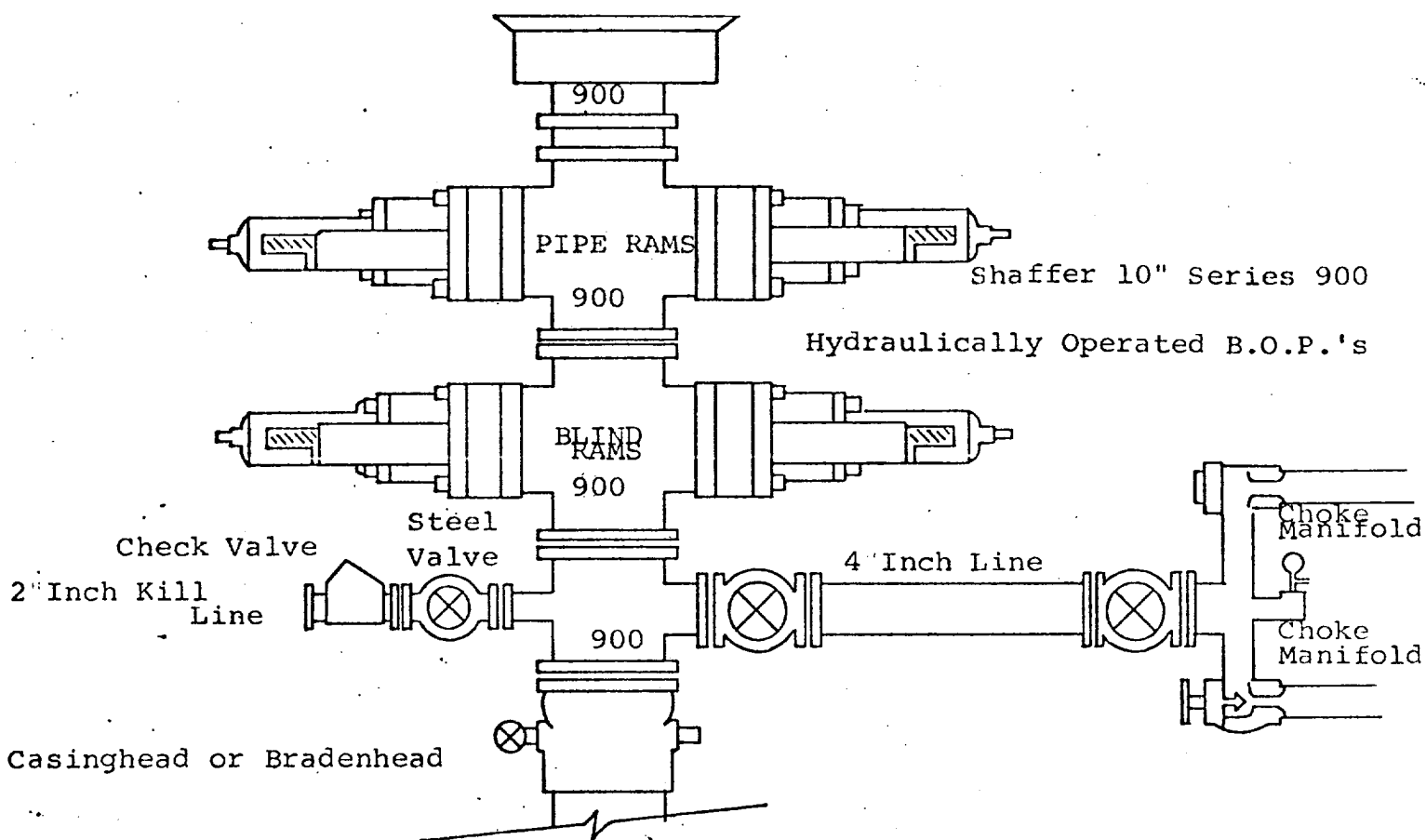
Date Surveyed  
February 16, 1976

Registered Professional Engineer and/or Land Surveyor

*John A. Mithis Jr*

Certificate No.  
1502





THE FOLLOWING CONSTITUTE MINIMUM BLOWOUT PREVENTER REQUIREMENTS

1. All preventers to be hydraulically operated with secondary manual controls installed prior to drilling out from under casing.
2. Choke outlet to be a minimum of 4" diameter.
3. Kill line to be of all steel construction of 2" minimum diameter.
4. All connections from operating manifolds to preventers to be all steel. hole or tube a minimum of one inch in diameter.
5. The available closing pressure shall be at least 15% in excess of that required with sufficient volume to operate the B.O.P.'s.
6. All connections to and from preventer to have a pressure rating equivalent to that of the B.O.P.'s.
7. Inside blowout preventer to be available on rig floor.
8. Operating controls located a safe distance from the rig floor.
9. Hole must be kept filled on trips below intermediate casing. Operator not responsible for blowouts resulting from not keeping hole full.
10. D. P. float must be installed and used below zone of first gas intrusion.