

NO. OF COPIES RECEIVED	1
DISTRIBUTION	
SANTA FE	
FILE	
U.S.G.S.	
LAND OFFICE	
OPERATOR	

NEW MEXICO OIL CONSERVATION COMMISSION

RECEIVED

APR - 2 1976

30-015-21775  
Form C-101  
Revised 1-1-65

APPLICATION FOR PERMIT TO DRILL, DEEPEN, OR PLUG BACK

1a. Type of Work		ARTESIA, OFFICE		7. Unit Agreement Name	
b. Type of Well OIL WELL <input checked="" type="checkbox"/> GAS WELL <input type="checkbox"/> OTHER <input type="checkbox"/>		DEEPEN <input type="checkbox"/> PLUG BACK <input type="checkbox"/>		8. Firm or Lease Name Cannon "FW"	
2. Name of Operator Yates Petroleum Corporation		SINGLE ZONE <input type="checkbox"/> MULTIPLE ZONE <input type="checkbox"/>		9. Well No. 1	
3. Address of Operator 207 South 4th Street-Artesia, NM 88210				10. Field and Pool, or Wildcat Atoka S.A.	
4. Location of Well UNIT LETTER C LOCATED 990 FEET FROM THE North LINE AND 2310 FEET FROM THE West South LINE OF SEC. 21 TWP. 18S RGE. 26E NMPM				12. County Eddy	
		19. Proposed Depth Approx 1800'		19A. Formation San Andres	
		20. Rotary or C.T. Rotary			
21. Elevations (Show whether DF, RT, etc.) 3368' GR		21A. Kind & Status Plug. Bond Blanket		21B. Drilling Contractor Byrd Drilling Co.	
		22. Approx. Date Work will start As soon as approved			

23.

PROPOSED CASING AND CEMENT PROGRAM

SIZE OF HOLE	SIZE OF CASING	WEIGHT PER FOOT	SETTING DEPTH	SACKS OF CEMENT	EST. TOP
15"	10-3/4"	32#	Approx. 400'	Circulate	
9-7/8"	7"	20#	" 1240'	Circulate	
6 1/2"	4 1/2 & 5 1/2"	9.5 & 15.5#	" 1800'	150 sacks	

It is our intention to drill a San Andres Test. Approximately 400' of surface casing will be run, if needed, to shut off gravel and cavings, intermediate casing will be set 100' below the Artesian Zone with cement circulated. If production is encountered a tapered string of 4 1/2" and 5 1/2" production casing will be run, perforated and treated for production.

Mud Program: - FW gel and lcm to 1240'. Fresh water to TD.

BOP Program: - BOP's will be installed on 7" casing and tested daily.

APPROVAL VALID  
FOR 90 DAYS UNLESS  
DRILLING COMMENCED,

EXPIRES 2-5-76

IN ABOVE SPACE DESCRIBE PROPOSED PROGRAM; IF PROPOSAL IS TO DEEPEN OR PLUG BACK, GIVE DATA ON PRESENT PRODUCTIVE ZONE AND PROPOSED NEW PRODUCTIVE ZONE, GIVE BLOWOUT PREVENTER PROGRAM, IF ANY.

I hereby certify that the information above is true and complete to the best of my knowledge and belief.

Signed Christine Johnson Title Geol. Secty Date 4-1-76

(This space for State Use)

APPROVED BY W. A. Grasset TITLE SUPERVISOR, DISTRICT II DATE APR - 5 1976

CONDITIONS OF APPROVAL, IF ANY:

Cement must be circulated to  
surface behind 10 3/4" & 7" casing

Notify N.M.O.C.C. in sufficient  
time to witness cementing  
the 7" casing

NEW MEXICO OIL CONSERVATION COMMISSION  
WELL LOCATION AND ACREAGE DEDICATION PLAT

Form C-102  
Supersedes C-128  
Effective 1-1-65

All distances must be from the outer boundaries of the Section.

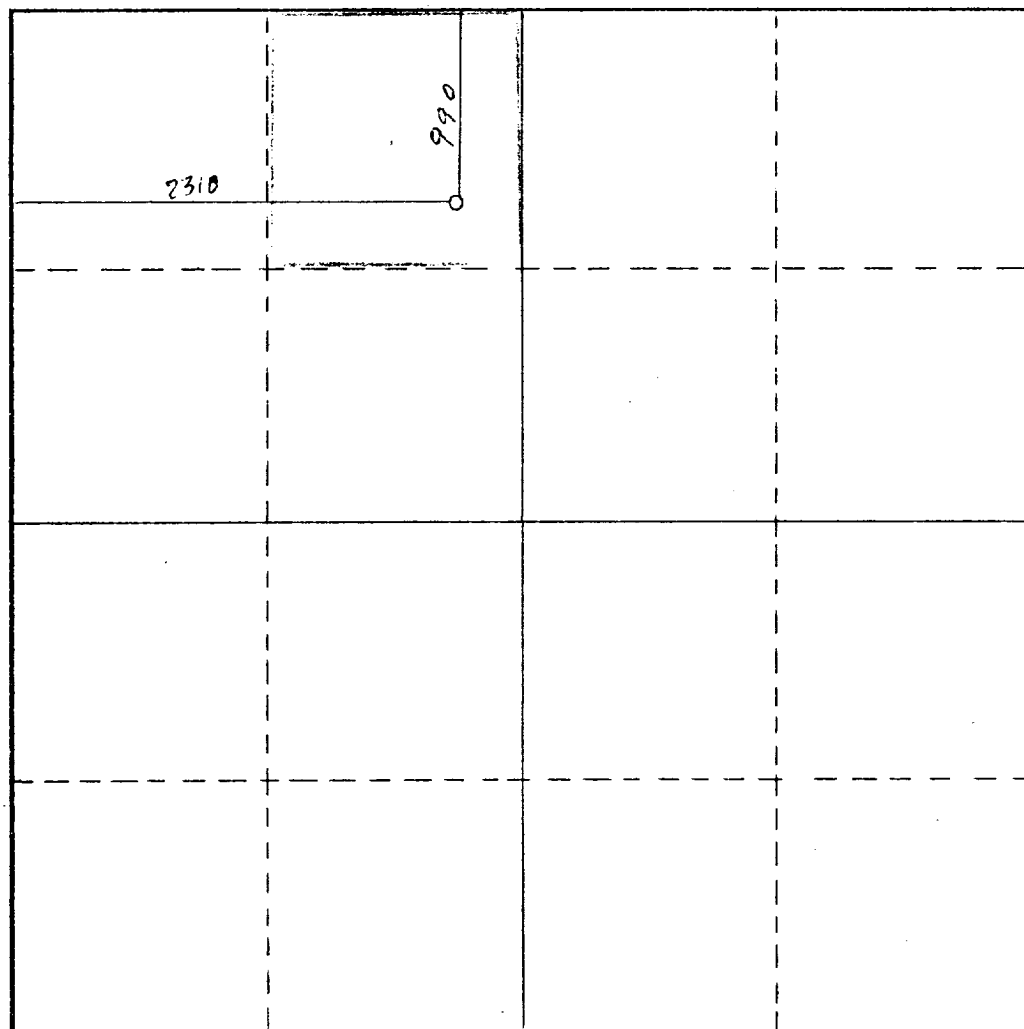
Operator <b>YATES PETROLEUM CORP.</b>			Lease <b>CANNON FLU</b>		Well No. <b>1</b>
Unit Letter <b>C</b>	Section <b>21</b>	Township <b>18 SOUTH</b>	Range <b>26 EAST</b>	County <b>EDDY</b>	
Actual Footage Location of Well: <b>990</b> feet from the <b>NORTH</b> line and <b>2310</b> feet from the <b>WEST</b> line					
Ground Level Elev. <b>3368</b>	Producing Formation <b>San Andres</b>		Pool <b>Atolca (S.A)</b>	Dedicated Acreage <b>40</b>	

1. Outline the acreage dedicated to the subject well by colored pencil or hachure marks on the plat below.
2. If more than one lease is dedicated to the well, outline each and identify the ownership thereof (both as to working interest and royalty).
3. If more than one lease of different ownership is dedicated to the well, have the interests of all owners been consolidated by communitization, unitization, force-pooling, etc?

☐ Yes ☐ No If answer is "yes," type of consolidation \_\_\_\_\_

If answer is "no," list the owners and tract descriptions which have actually been consolidated. (Use reverse side of this form if necessary.) \_\_\_\_\_

No allowable will be assigned to the well until all interests have been consolidated (by communitization, unitization, forced-pooling, or otherwise) or until a non-standard unit, eliminating such interests, has been approved by the Commission.



CERTIFICATION

I hereby certify that the information contained herein is true and complete to the best of my knowledge and belief.

*Eddie M. Mahford*  
Name

Eddie M. Mahford

Position  
Engineer

Company  
Yates Petroleum Corporation

Date  
4-1-76

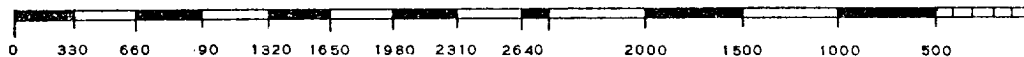
I hereby certify that the well location shown on this plat was plotted from field notes of actual surveys made by me or under my supervision, and that the same is true and correct to the best of my knowledge and belief.

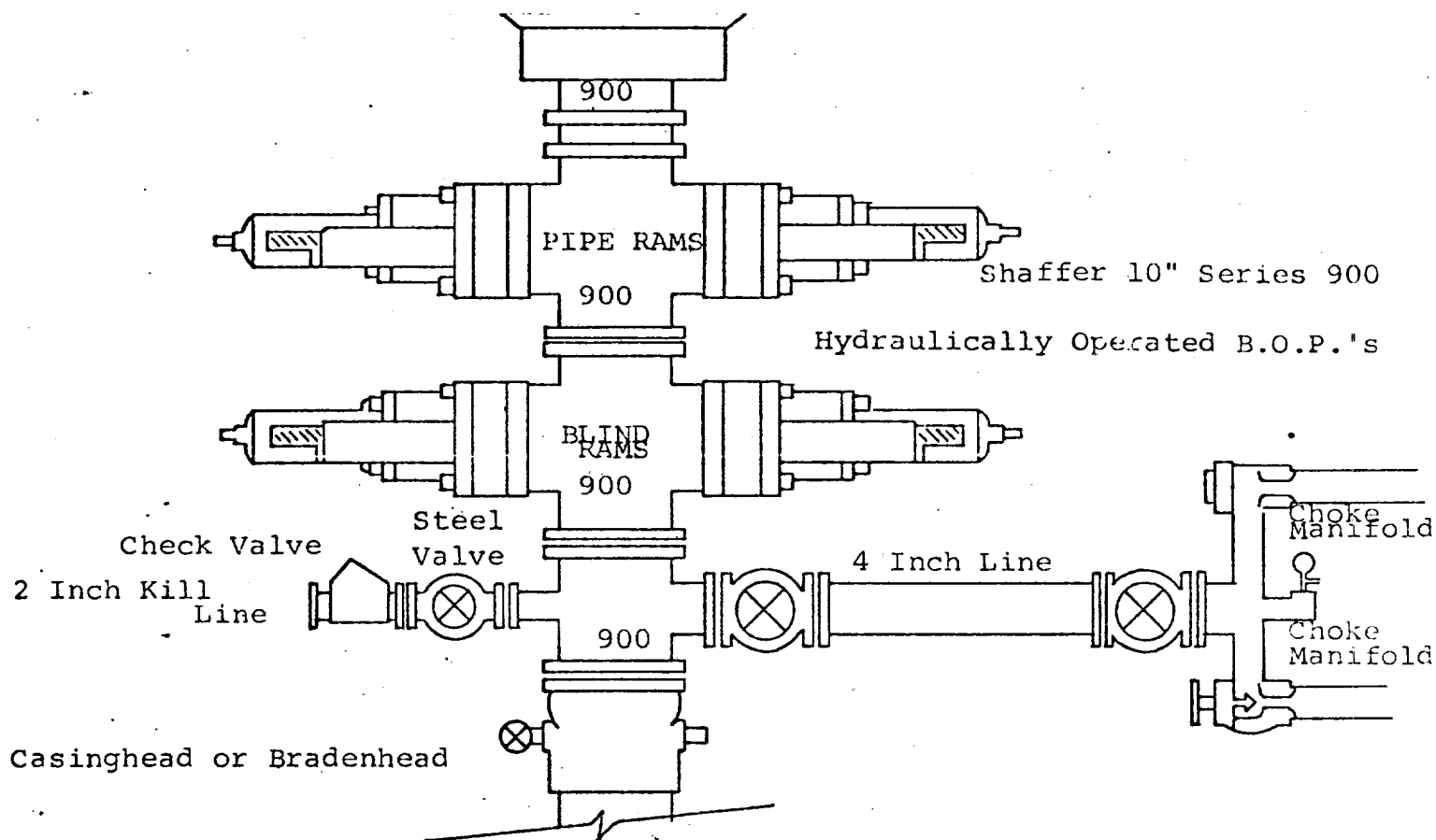
Date Surveyed  
April 1, 1976

Registered Professional Engineer and/or Land Surveyor

*John A. Mathis Jr.*

Certificate No.  
1502





THE FOLLOWING CONSTITUTE MINIMUM BLOWOUT PREVENTER REQUIREMENTS

1. All preventers to be hydraulically operated with secondary manual controls installed prior to drilling out from under casing.
2. Choke outlet to be a minimum of 4" diameter.
3. Kill line to be of all steel construction of 2" minimum diameter.
4. All connections from operating manifolds to preventers to be all steel hole or tube a minimum of one inch in diameter.
5. The available closing pressure shall be at least 15% in excess of that required with sufficient volume to operate the B.O.P.'s.
6. All connections to and from preventer to have a pressure rating equivalent to that of the B.O.P.'s.
7. Inside blowout preventer to be available on rig floor.
8. Operating controls located a safe distance from the rig floor.
9. Hole must be kept filled on trips below intermediate casing. Operator not responsible for blowouts resulting from not keeping hole full.
10. D. P. float must be installed and used below zone of first gas intrusion.