

NEW MEXICO OIL CONSERVATION COMMISSION
WELL LOCATION AND ACREAGE DEDICATION PLAT

Form O-10
Supersedes O-10B
Effective 1-1-65

All distances must be from the outer boundaries of the section

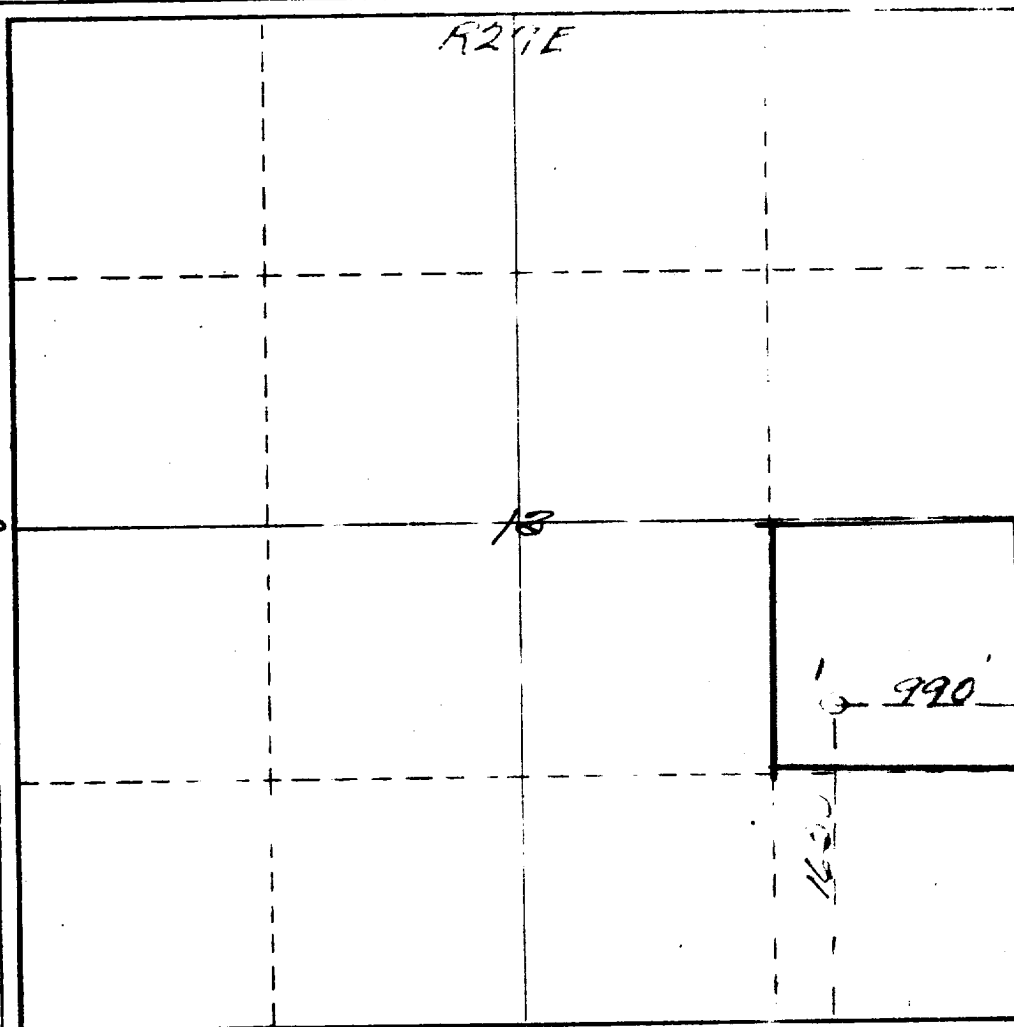
Operator <i>C.O. Fulton</i>		State <i>Texas</i>		Well No. <i>1</i>
Unit Letter <i>I</i>	Section <i>13</i>	Twp. & Range <i>9 South 27 East Ed.</i>		
Actual Footage Location of Well: <i>1650</i> feet from the <i>South</i> line and <i>110</i> feet from the <i>East</i> line				
Ground Level Elev. <i>3600</i>	Producing Formation <i>Gr. 5 A</i>	Pool <i>Alamo</i>	Dedicated Acreage: <i>40</i> Acres	

1. Outline the acreage dedicated to the subject well by colored pencil or hachure marks on the plat below.
2. If more than one lease is dedicated to the well, outline each and identify the ownership thereof (both as to working interest and royalty).
3. If more than one lease of different ownership is dedicated to the well, have the interests of all owners been consolidated by communitization, unitization, force-pooling, etc?

☐ Yes ☐ No If answer is "yes," type of consolidation _____

If answer is "no," list the owners and tract descriptions which have actually been consolidated. (Use reverse side of this form if necessary.) _____

No allowable will be assigned to the well until all interests have been consolidated (by communitization, unitization, forced-pooling, or otherwise) or until a non-standard unit, communitizing such interests, has been approved by the Commission.



CERTIFICATION

I hereby certify that the information contained herein is true and complete to the best of my knowledge and belief.

C.O. Fulton

Date

I hereby certify that the location shown on this plat was placed from field notes of actual surveys made by me or under my supervision and that the same is true and correct to the best of my knowledge and belief.

Date Surveyed

April 3rd 1976

Registered Professional Engineer and/or Land Surveyor

James H. Brown

Certificate No.

542

0 330 660 990 1320 1650 1980 2310 2640 2970 3300 3630 3960 4290 4620 4950 5280 5610 5940 6270 6600