

NO. OF COPIES RECEIVED	
DISTRIBUTION	
SANTA FE	
FILE	
U.S.G.S.	
LAND OFFICE	
OPERATOR	

RECEIVED
NEW MEXICO OIL CONSERVATION COMMISSION

JUL 15 1976

O. C. C.
ARTESIA, OFFICE

Form C-101
Revised 1-1-65

5A. Indicate Type of Lease STATE <input checked="" type="checkbox"/> FEE <input type="checkbox"/>
5. State Oil & Gas Lease No. 647

APPLICATION FOR PERMIT TO DRILL, DEEPEN, OR PLUG BACK

1a. Type of Work b. Type of Well OIL WELL <input checked="" type="checkbox"/> GAS WELL <input type="checkbox"/> OTHER <input type="checkbox"/>		DRILL <input checked="" type="checkbox"/> DEEPEN <input type="checkbox"/> PLUG BACK <input type="checkbox"/>		7. Unit Agreement Name Artesia metex unit	
2. Name of Operator Yates Drilling Company		3. Address of Operator 207 So. 4th, Artesia, NM 88210		8. Farm or Lease Name Artesia Metex Unit	
4. Location of Well UNIT LETTER C LOCATED 1220 FEET FROM THE North LINE AND 1420 FEET FROM THE West LINE OF SEC. 30 TWP. 18S RGE. 28E NMPM		9. Well No. 60		10. Field and Pool, or Wildcat X Artesia	
21. Elevations (Show whether DF, RT, etc.) 3562.6		21A. Kind & Status Plug. Bond Blanket		12. County Eddy	
19. Proposed Depth Approx 2200'		19A. Formation Grayburg		20. Rotary or C.T. Rotary	
21B. Drilling Contractor Schroder		22. Approx. Date Work will start As soon as approved			

PROPOSED CASING AND CEMENT PROGRAM

SIZE OF HOLE	SIZE OF CASING	WEIGHT PER FOOT	SETTING DEPTH	SACKS OF CEMENT	EST. TOP
11"	8-5/8"	24#	Approx 500'		Circulate
7-7/8"	5 1/2"	14#	" 2200'	150 sx	

It is our intention to drill a 11" hole to approx. 500'; set 8-5/8" 24# csg and circulate with Class "C" cement, then drill 7-7/8" hole to top of San Andres (approx 2200') and set 5 1/2" 14# csg with 150 sx Class "C" cement. Cement top est. at 1500'. Run CBL and GRN logs from approx. 1400' to TD. Perforate in Metex producing zones and stimulate as needed.

NSL-782

7-12-76

Blow out preventer-Shaffer 10" 900#

APPROVAL VALID
FOR 90 DAYS UNLESS
DRILLING COMMENCED,

EXPIRES 9-19-76

IN ABOVE SPACE DESCRIBE PROPOSED PROGRAM; IF PROPOSAL IS TO DEEPEN OR PLUG BACK, GIVE DATA ON PRESENT PRODUCTIVE ZONE AND PROPOSED NEW PRODUCTIVE ZONE, GIVE BLOWOUT PREVENTER PROGRAM, IF ANY.

I hereby certify that the information above is true and complete to the best of my knowledge and belief.

Signed Pyter Yates Title Engineer Date 7/6/76
(This space for State Use)

APPROVED BY W. A. Gressitt TITLE SUPERVISOR, DISTRICT II DATE JUL 19 1976
CONDITIONS OF APPROVAL, IF ANY:

NEW MEXICO OIL CONSERVATION COMMISSION
WELL LOCATION AND ACREAGE DEDICATION PLAT

Form C-102
Supersedes C-128
Effective 4-1-65

All distances must be from the outer boundaries of the Section.

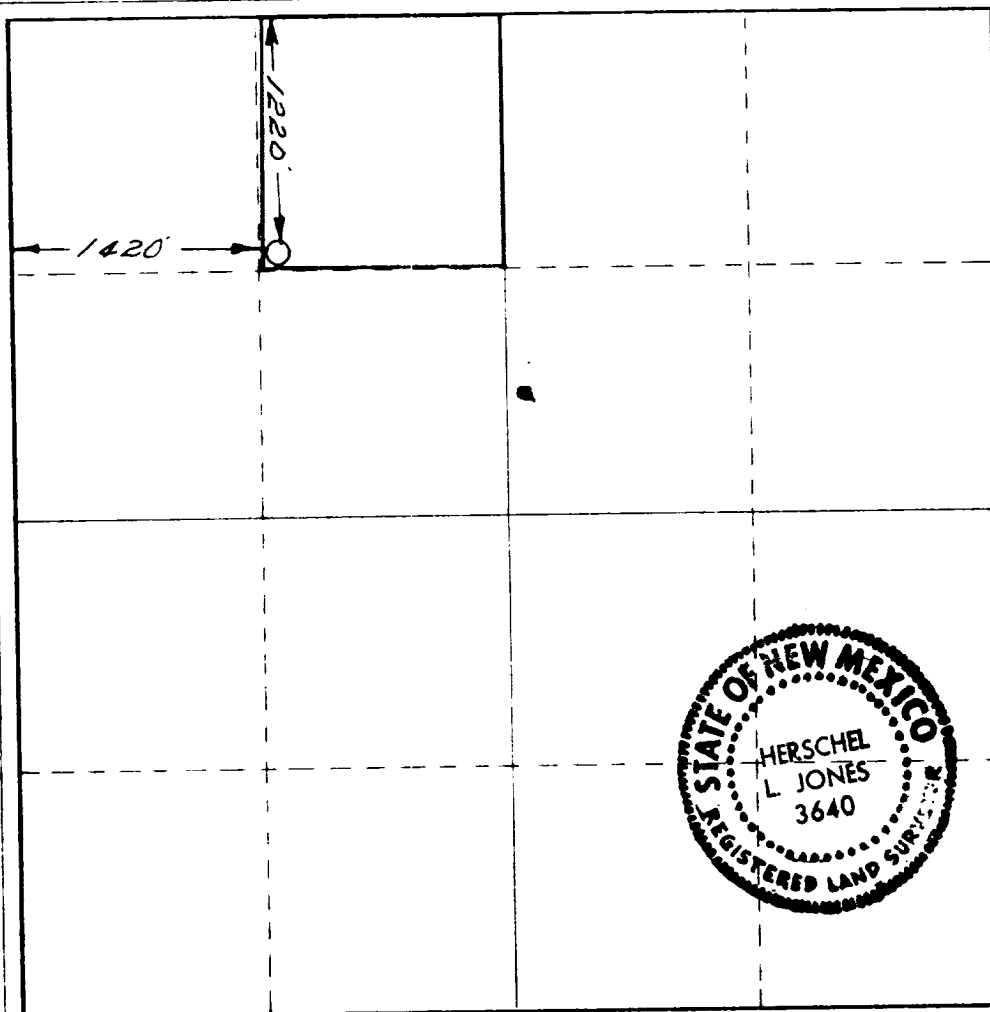
Operator YATES DRILLING COMPANY			Lease ARTESIA METEX UNIT		Well No. 60
Tract Letter "C"	Section 30	Township 18 South	Range 28 East	County Eddy County	
Actual Footage Location of Well:					
1220	feet from the	North	line and	1420	feet from the
					West
Ground Level Elev. 3562.0	Producing Formation Grayburg		Pool Artesia Q-G-SA	Dedicated Acreage: 40 Acres	

1. Outline the acreage dedicated to the subject well by colored pencil or hachure marks on the plat below.
2. If more than one lease is dedicated to the well, outline each and identify the ownership thereof (both as to working interest and royalty).
3. If more than one lease of different ownership is dedicated to the well, have the interests of all owners been consolidated by communitization, unitization, force-pooling, etc?

☐ Yes ☐ No If answer is "yes," type of consolidation _____

If answer is "no," list the owners and tract descriptions which have actually been consolidated. (Use reverse side of this form if necessary.) _____

No allowable will be assigned to the well until all interests have been consolidated (by communitization, unitization, forced-pooling, or otherwise) or until a non-standard unit, eliminating such interests, has been approved by the Commission.



CERTIFICATION

I hereby certify that the information contained herein is true and complete to the best of my knowledge and belief.

Name
Herschel L. Jones
Position

Company
Engineer

Date
Yates Drig. Co.

7-6-76

I hereby certify that the well location shown on this plat was plotted from field notes of actual surveys made by me or under my supervision, and that the same is true and correct to the best of my knowledge and belief.

Date Surveyed
July 5, 1976

Registered Professional Engineer and/or Land Surveyor

Herschel L. Jones
Certificate No.
3640

0 330 660 990 1320 1650 1980 2310 2640 2970 3300 3630 3960 4290 4620 4950 5280 5610 5940 6270 6600