

| | |
|------------------------|---|
| NO. OF COPIES RECEIVED | 6 |
| DISTRIBUTION | |
| SANTA FE | 1 |
| FILE | 1 |
| U.S.G.S. | 1 |
| LAND OFFICE | 1 |
| OPERATOR | 1 |

NEW MEXICO OIL CONSERVATION COMMISSION

RECEIVED

JUL 20 1976

O. C. C.

ARTESIA, OFFICE

Form C-101
Revised 1-1-65

| |
|--|
| 5A. Indicate Type of Lease STATE <input checked="" type="checkbox"/> FEE <input type="checkbox"/> |
| 5. State Oil & Gas Lease No. |
| 7. Unit Agreement Name |
| 8. Farm or Lease Name Artesia Metex Unit |
| 9. Well No. 61 |
| 10. Field and Pool, or Wildcat Artesia |
| 12. County Eddy |
| 19. Proposed Depth Approx 2200' |
| 19A. Formation Grayburg |
| 20. Rotary or C.T. Rotary |
| 21. Elevations (Show whether DF, RT, etc.) 3565.0 |
| 21A. Kind & Status Plug. Bond Blanket |
| 21B. Drilling Contractor Sonora Drilling |
| 22. Approx. Date Work will start As soon as approved |

APPLICATION FOR PERMIT TO DRILL, DEEPEN, OR PLUG BACK

| | |
|---|---|
| 1a. Type of Work b. Type of Well OIL WELL <input checked="" type="checkbox"/> GAS WELL <input type="checkbox"/> OTHER <input type="checkbox"/> SINGLE ZONE <input type="checkbox"/> MULTIPLE ZONE <input type="checkbox"/> | DRILL <input type="checkbox"/> DEEPEN <input type="checkbox"/> PLUG BACK <input type="checkbox"/> |
| 2. Name of Operator Yates Drilling Company | |
| 3. Address of Operator 207 So. 4th, Artesia, NM 88210 | |
| 4. Location of Well UNIT LETTER A LOCATED 270 FEET FROM THE North LINE AND 1050 FEET FROM THE East LINE OF SEC. 25 TWP. 18S RGE. 27E NMPM | |
| 23. PROPOSED CASING AND CEMENT PROGRAM | |

| SIZE OF HOLE | SIZE OF CASING | WEIGHT PER FOOT | SETTING DEPTH | SACKS OF CEMENT | EST. TOP |
|--------------|----------------|-----------------|---------------|-----------------|-----------|
| 11" | 8-5/8" | 24# | Approx 500' | | Circulate |
| 7-7/8" | 5 1/2" | 14# | " 2200' | 150 sxs | |

It is our intention to drill a 11" hole to approx. 500'; set 8-5/8" 24# csg and circulate with Class "C" cement, then drill 7-7/8" hole to top of San Andres (approx 2200') and set 5 1/2" 14# csg with 150 sxs Class "C" cement. Cement top est. at 1500'. Run CBL and GRN logs from approx. 1400' to TD. Perforate in Metex producing zones and stimulate as needed.

BOP Program: 10" - 900 Series - Shaffer.

APPROVAL VALID
FOR 90 DAYS UNLESS
DRILLING COMMENCED,

EXPIRES 10-29-76

IN ABOVE SPACE DESCRIBE PROPOSED PROGRAM: IF PROPOSAL IS TO DEEPEN OR PLUG BACK, GIVE DATA ON PRESENT PRODUCTIVE ZONE AND PROPOSED NEW PRODUCTIVE ZONE. GIVE BLOWOUT PREVENTER PROGRAM, IF ANY.

I hereby certify that the information above is true and complete to the best of my knowledge and belief.

Signed Robert Yates Title Engineer Date July 19, 1976
(This space for State Use)

APPROVED BY W. A. Gussert TITLE SUPERVISOR, DISTRICT II DATE JUL 29 1976

CONDITIONS OF APPROVAL, IF ANY:

Minimum WOC time/8 hrs. Declared Water Basin

NEW MEXICO OIL CONSERVATION COMMISSION
WELL LOCATION AND ACREAGE DEDICATION PLAT

Form C-102
Supersedes C-128
Effective 1-1-65

All distances must be from the outer boundaries of the Section.

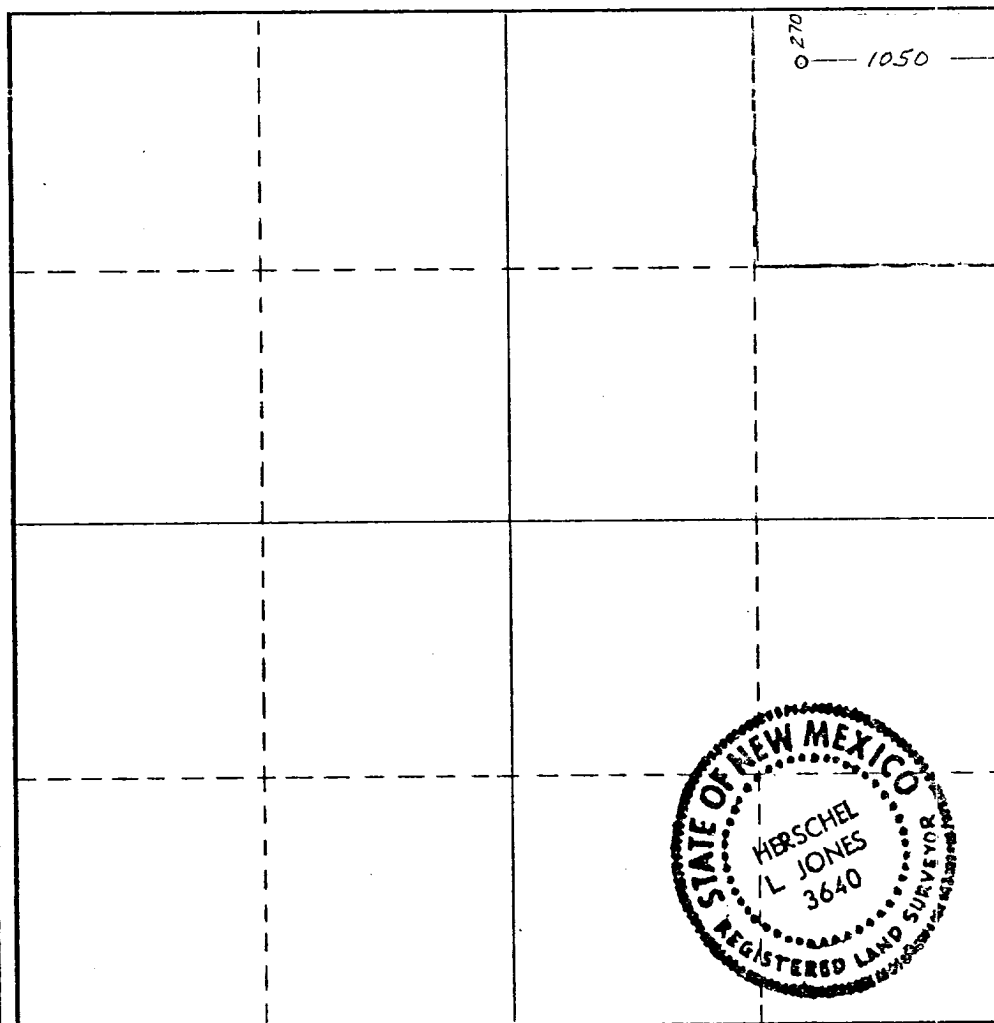
| | | | | | |
|---|--|-----------------------------|--|---------------------------------------|-----------------------|
| Operator YATES DRILLING COMPANY | | | Lease Artesia METEX UNIT | | Well No. 61 |
| Unit Letter "A" | Section 25 | Township 18 SOUTH | Range 27 EAST | County EDDY | |
| Actual Footage Location of Well: 1050 feet from the EAST line and 270 feet from the NORTH line | | | | | |
| Ground Level Elev. 3565.0 | Producing Formation Grayburg | | Pool Artesia | Dedicated Acreage: 40 Acres | |

1. Outline the acreage dedicated to the subject well by colored pencil or hachure marks on the plat below.
2. If more than one lease is dedicated to the well, outline each and identify the ownership thereof (both as to working interest and royalty).
3. If more than one lease of different ownership is dedicated to the well, have the interests of all owners been consolidated by communitization, unitization, force-pooling, etc?

☐ Yes ☐ No If answer is "yes," type of consolidation _____

If answer is "no," list the owners and tract descriptions which have actually been consolidated. (Use reverse side of this form if necessary.) _____

No allowable will be assigned to the well until all interests have been consolidated (by communitization, unitization, forced-pooling, or otherwise) or until a non-standard unit, eliminating such interests, has been approved by the Commission.



CERTIFICATION

I hereby certify that the information contained herein is true and complete to the best of my knowledge and belief.

Name
Peyton Yates

Position
Engineer

Company
Yates Drilling Co.

Date
July 20, 1976

I hereby certify that the well location shown on this plat was plotted from field notes of actual surveys made by me or under my supervision, and that the same is true and correct to the best of my knowledge and belief.

Date Surveyed
July 20, 1976

Registered Professional Engineer and/or Land Surveyor

Certificate No. **3640**

