

NEW MEXICO OIL CONSERVATION COMMISSION
WELL LOCATION AND ACREAGE DEDICATION PLAT

Form 1-1
Supersedes C-128
Effective 1-4-65

All distances must be from the outer boundaries of the Section.

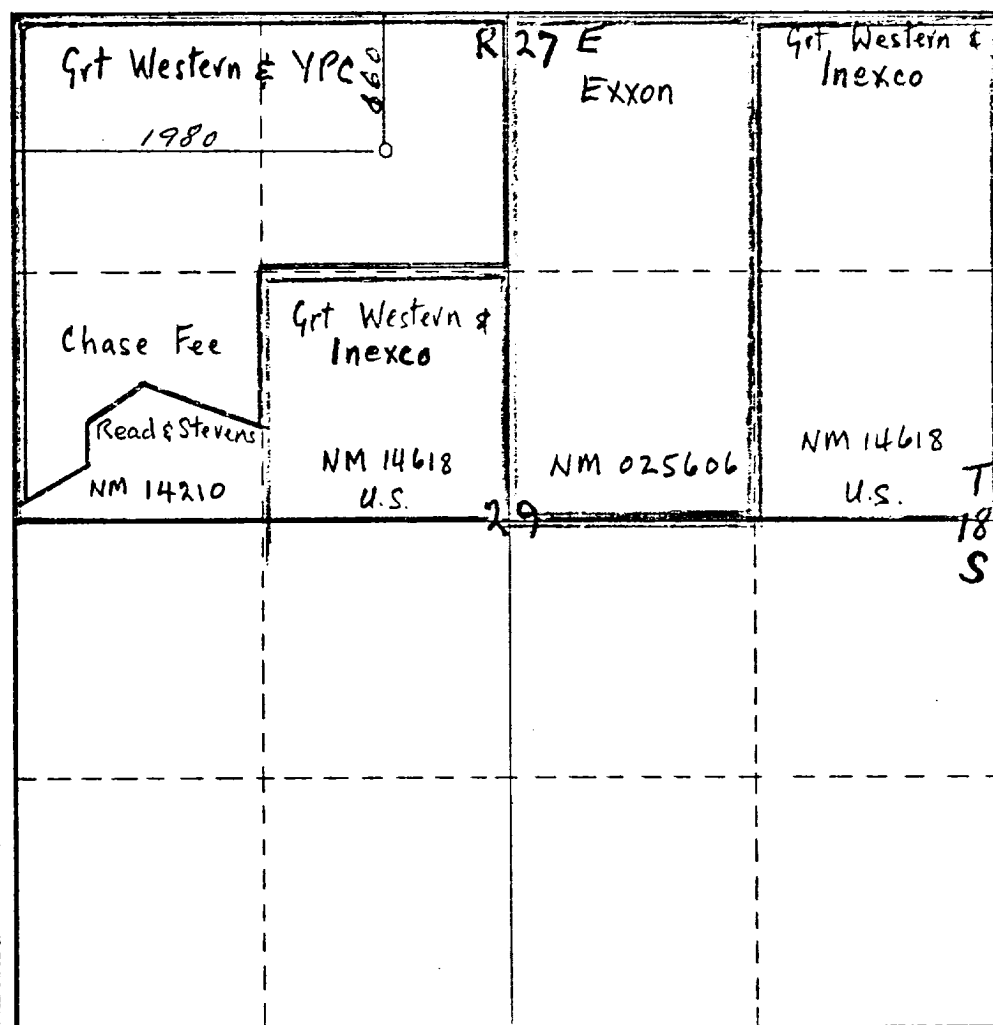
Operator YATES PETROLEUM CORP.			Lease RIO PECOS		Well No. 02#1
Unit Letter C	Section 29	Township 18 SOUTH	Range 27 EAST	County EDDY	
Actual Postage Location of Well: 660 feet from the NORTH line and 1980 feet from the WEST line					
Ground Level Elev. 3305	Producing Formation Morrow	Pool Ant. Red Lake Penn. Wellbent	Dedicated Acreage: 320 Acres		

1. Outline the acreage dedicated to the subject well by colored pencil or hatchure marks on the plat below.
2. If more than one lease is dedicated to the well, outline each and identify the ownership thereof (both as to working interest and royalty).
3. If more than one lease of different ownership is dedicated to the well, have the interests of all owners been consolidated by communitization, unitization, force-pooling, etc?

☒ Yes ☐ No If answer is "yes," type of consolidation Being Communitized

If answer is "no," list the owners and tract descriptions which have actually been consolidated. (Use reverse side of this form if necessary.)

No allowable will be assigned to the well until all interests have been consolidated (by communitization, unitization, forced-pooling, or otherwise) or until a non-standard unit, eliminating such interests, has been approved by the Commission.



CERTIFICATION

I hereby certify that the information contained herein is true and complete to the best of my knowledge and belief.

Eddie M. Mahfood

Name
Eddie M. Mahfood

Position
Engineer

Company
Yates Pet. Corporation

Date
8-10-76

I hereby certify that the well location shown on this plat was plotted from field notes of actual surveys made by me or under my supervision, and that the same is true and correct to the best of my knowledge and belief.

Date Surveyed
APRIL 15, 1976

Registered Professional Engineer and/or Land Surveyor

John A. Matwile

Certificate No.
1502