

30-015-21904

Form C-101
Revised 1-1-65

NEW MEXICO OIL CONSERVATION COMMISSION

RECEIVED

SEP - 7 1976

NO. OF COPIES RECEIVED	5
DISTRIBUTION	
SANTA FE	1
FILE	1
U.S.G.S.	2
LAND OFFICE	
OPERATOR	1

5A. Indicate Type of Lease STATE <input type="checkbox"/> FEDERAL <input checked="" type="checkbox"/>
5. State Oil & Gas Lease No.
7. Unit Agreement Name
8. Farm or Lease Name Dayton "FI"
9. Well No. 2
10. Field and Pool, or Wildcat Atoka (S.A.)
12. County Eddy
19. Formation San Andres
20. Rotary or C.T. Rotary
21. Elevation (Show whether DF, RI, etc.) 3363' GR
21A. Kind & Status Plug, Bond Blanket
21B. Drilling Contractor Byrd Drilling Co.
22. Approx. Date Work will start As soon as approved

1a. Type of Work DRILL <input checked="" type="checkbox"/> DEEPEN <input type="checkbox"/> PLUG BACK <input type="checkbox"/>	
b. Type of Well OIL WELL <input checked="" type="checkbox"/> GAS WELL <input type="checkbox"/> OTHER <input type="checkbox"/>	
2. Name of Operator Yates Petroleum Corporation	
3. Address of Operator 207 South 4th Street - Artesia, NM 88210	
4. Location of Well UNIT LETTER A LOCATED 990 FEET FROM THE North LINE AND 330, FEET FROM THE East LINE OF SEC. 28 TWP. 18S RGE. 26E NADPM	
23. PROPOSED CASING AND CEMENT PROGRAM	

SIZE OF HOLE	SIZE OF CASING	WEIGHT PER FOOT	SETTING DEPTH	SACKS OF CEMENT	EST. TOP
15"	10-3/4"	32#	Approx 400'	Circulate	
9-7/8"	7"	20#	" 1230'	Circulate	
6 1/4"	4 1/2 & 5 1/2"	9.5 & 15.5#	" 1800'	Circulate	

We propose to drill a San Andres test. If needed, will run approx. 400' of surface casing to shut off gravel and cavings. Intermediate casing will be set 100' below the Artesian zone, cement circulated. A tapered 4 1/2" and 5 1/2" oil string will be run, cemented to the surface, perforated and stimulated for production.

Mud Program: - FW gel & LCM to 1230', fresh water to TD.

BOP Program: - BOP's will be installed on the 7" casing and tested daily.

APPROVAL VALID
FOR 90 DAYS UNLESS
DRILLING COMMENCED,

EXPIRES 12-7-76

IN ABOVE SPACE DESCRIBE PROPOSED PROGRAM; IF PROPOSAL IS TO DEEPEN OR PLUG BACK, GIVE DATA ON PRESENT PRODUCTIVE ZONE AND PROPOSED NEW PRODUCTIVE ZONE, GIVE BLOWOUT PREVENTER PROGRAM, IF ANY.

I hereby certify that the information above is true and complete to the best of my knowledge and belief.

Signed Christine Tomlinson Title Geol. Secty Date 9-7-76

APPROVED BY W.A. Gressett TITLE SUPERVISOR, DISTRICT II DATE SEP 7 1976

CONDITIONS OF APPROVAL, IF ANY:

Cement must be circulated to surface behind 10 3/4" & 7"

Notify N.M.O.C.C. in sufficient time to witness cementing the 7"

N MEXICO OIL CONSERVATION COMMISS
WELL LOCATION AND ACREAGE DEDICATION PLAT

Form C-102
 Supersedes C-128
 Effective 1-1-65

All distances must be from the outer boundaries of the Section.

Operator YATES PETROLEUM CORPORATION			Lease DAYTON "FI"		Well No. 2
Unit Letter A	Section 28	Township 18 South	Range 26 East	County Eddy	
Actual Footage Location of Well: 990 feet from the North line and 330 feet from the East line					
Ground Level Elev. 3363	Producing Formation San Andres		Pool Atoka	Dedicated Acreage: 40 Acres	

1. Outline the acreage dedicated to the subject well by colored pencil or hachure marks on the plat below.

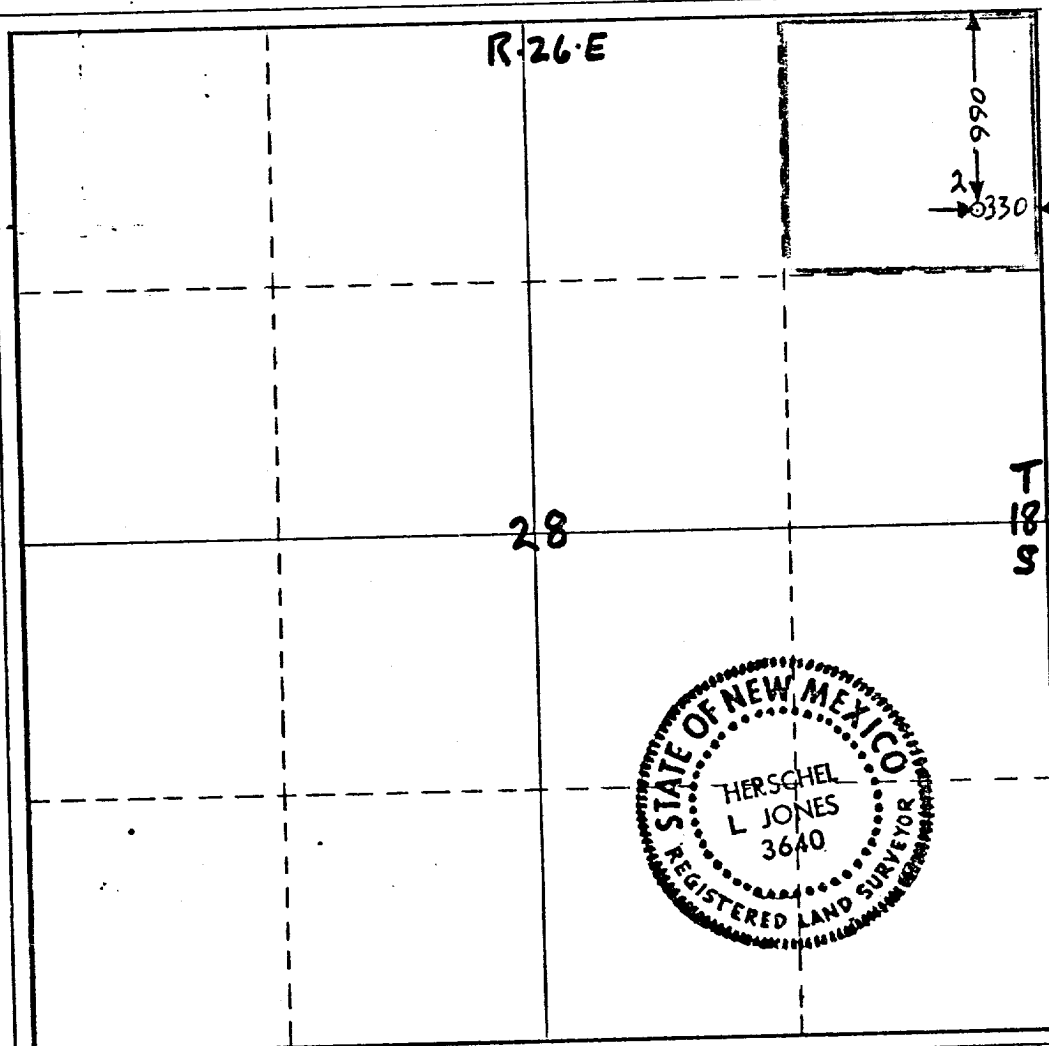
2. If more than one lease is dedicated to the well, outline each and identify the ownership thereof (both as to working interest and royalty).

3. If more than one lease of different ownership is dedicated to the well, have the interests of all owners been consolidated by communitization, unitization, force-pooling, etc?

☐ Yes ☐ No If answer is "yes," type of consolidation _____

If answer is "no," list the owners and tract descriptions which have actually been consolidated. (Use reverse side of this form if necessary.) _____

No allowable will be assigned to the well until all interests have been consolidated (by communitization, unitization, forced-pooling, or otherwise) or until a non-standard unit, eliminating such interests, has been approved by the Commission.



CERTIFICATION

I hereby certify that the information contained herein is true and complete to the best of my knowledge and belief.

Name
Eddie M. Mahfood
Eddie M. Mahfood

Position
Engineer

Company
Yates Pet. Corporation

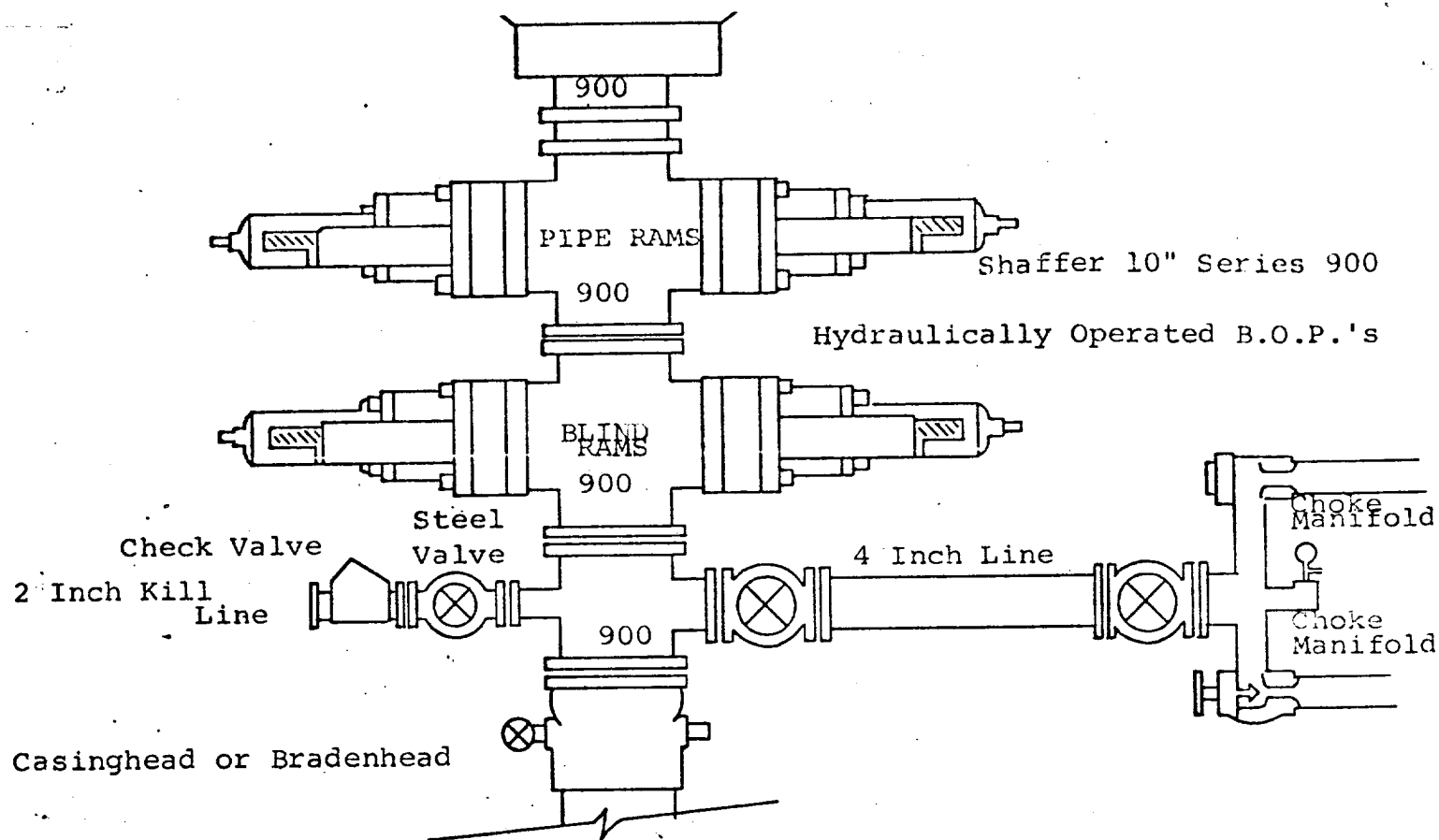
Date
9-7-76

I hereby certify that the well location shown on this plat was plotted from field notes of actual surveys made by me or under my supervision, and that the same is true and correct to the best of my knowledge and belief.

Date Surveyed
September 4, 1976

Registered Professional Engineer and/or Land Surveyor

Herschel Jones
 Certificate No. **3640**



THE FOLLOWING CONSTITUTE MINIMUM BLOWOUT PREVENTER REQUIREMENTS

1. All preventers to be hydraulically operated with secondary manual controls installed prior to drilling out from under casing.
2. Choke outlet to be a minimum of 4" diameter.
3. Kill line to be of all steel construction of 2" minimum diameter.
4. All connections from operating manifolds to preventers to be all steel hole or tube a minimum of one inch in diameter.
5. The available closing pressure shall be at least 15% in excess of that required with sufficient volume to operate the B.O.P.'s.
6. All connections to and from preventer to have a pressure rating equivalent to that of the B.O.P.'s.
7. Inside blowout preventer to be available on rig floor.
8. Operating controls located a safe distance from the rig floor.
9. Hole must be kept filled on trips below intermediate casing. Operator not responsible for blowouts resulting from not keeping hole full.
10. D. P. float must be installed and used below zone of first gas intrusion.