

RECEIVED

OCT 12 1976

NEW MEXICO OIL CONSERVATION COMMISSION
WELL LOCATION AND ACREAGE DEDICATION PLAT

Form C-102
Supersedes C-128
Effective 1-1-65

All distances must be from the outer boundaries of the Section.

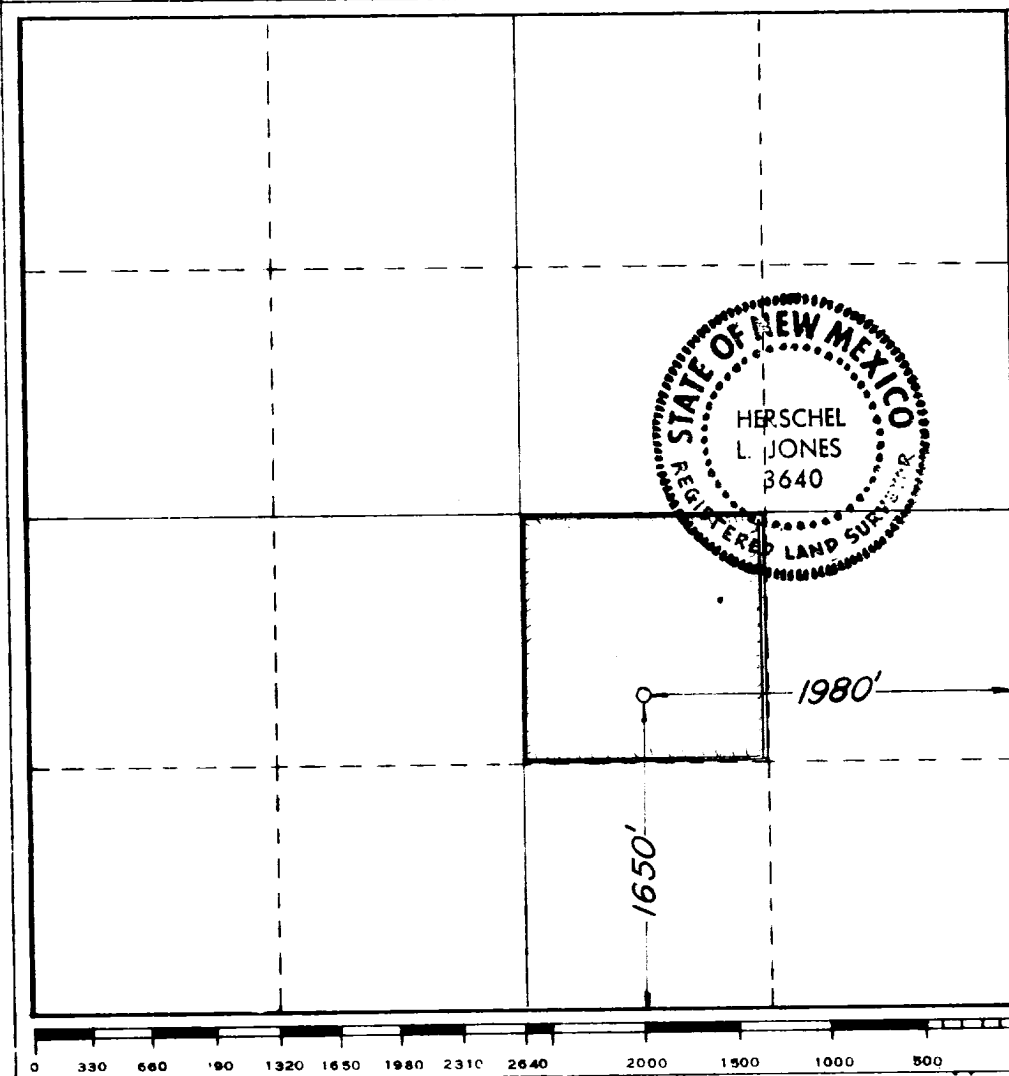
Operator MARK PRODUCTION COMPANY		Lease HIGGINS UNIT "A"		Well No. 1
Unit Letter J	Section 1	Township 18 South	Range 26 East	County Eddy
Actual Well Location of Well: 1980 feet from the East line and 1650 feet from the South line				
Ground Level Elev. 3288	Producing Formation San Andres	Pool und Red Lake	Dedicated Acreage: 40 Acres	

1. Outline the acreage dedicated to the subject well by colored pencil or hatchure marks on the plat below.
2. If more than one lease is dedicated to the well, outline each and identify the ownership thereof (both as to working interest and royalty).
3. If more than one lease of different ownership is dedicated to the well, have the interests of all owners been consolidated by communitization, unitization, force-pooling, etc?

☒ Yes ☐ No If answer is "yes," type of consolidation Unitization

If answer is "no," list the owners and tract descriptions which have actually been consolidated. (Use reverse side of this form if necessary.)

No allowable will be assigned to the well until all interests have been consolidated (by communitization, unitization, forced-pooling, or otherwise) or until a non-standard unit, eliminating such interests, has been approved by the Commission.



CERTIFICATION

I hereby certify that the information contained herein is true and complete to the best of my knowledge and belief.

Marjorie Lotz

Name
Marjorie Lotz

Position
Production Clerk

Company
Mark Production Company

Date
October 8, 1976

I hereby certify that the well location shown on this plat was plotted from field notes of actual surveys made by me or under my supervision, and that the same is true and correct to the best of my knowledge and belief.

Date Surveyed
Sept. 20, 1976

Registered Professional Engineer and/or Land Surveyor

Herschel L. Jones

Certificate No.
3640