

NO. OF COPIES RECEIVED	5
DISTRIBUTION	
SANTA FE	1
FILE	1
U.S.G.S.	2
LAND OFFICE	
OPERATOR	1

NEW MEXICO OIL CONSERVATION COMMISSION

**RECEIVED**

**JAN 28 1977**

30-015-22034

Form C-101  
Revised 1-1-65

5A. Indicate Type of Lease STATE <input type="checkbox"/> FEE <input checked="" type="checkbox"/>
5. State Oil & Gas Lease No.
7. Unit Agreement Name
8. Form or Lease Name Gulf "HI"
9. Well No. 1
10. Field and Pool, or Wildcat Und. Atoka San Andres
12. County Eddy
19. Proposed Depth approx 1850'
19A. Formation San Andres
20. Rotary or C.T. Rotary
21. Elevations (Show whether D.P., R.L., etc.) 3374'
21A. Kind & Status Plug. Bond Blanket
21B. Drilling Contractor Byrd Drilling Co.
22. Approx. Date Work will start As soon as approved

**APPLICATION FOR PERMIT TO DRILL, DEEPEN OR PLUG BACK**

1a. Type of Work b. Type of Well OIL WELL <input checked="" type="checkbox"/> GAS WELL <input type="checkbox"/> OTHER <input type="checkbox"/> 2. Name of Operator Yates Petroleum Company Corp. 3. Address of Operator 207 South 4th Street - Artesia, NM 88210 4. Location of Well UNIT LETTER J LOCATED 1650 FEET FROM THE South LINE AND 1750 FEET FROM THE East LINE OF SEC. 28 TWP. 18S RGE. 26E NADAM	1a. Type of Work DRILL <input checked="" type="checkbox"/> DEEPEN <input type="checkbox"/> PLUG BACK <input type="checkbox"/> b. Type of Well OIL WELL <input checked="" type="checkbox"/> GAS WELL <input type="checkbox"/> OTHER <input type="checkbox"/> 2. Name of Operator Yates Petroleum Company Corp. 3. Address of Operator 207 South 4th Street - Artesia, NM 88210 4. Location of Well UNIT LETTER J LOCATED 1650 FEET FROM THE South LINE AND 1750 FEET FROM THE East LINE OF SEC. 28 TWP. 18S RGE. 26E NADAM
-----------------------------------------------------------------------------------------------------------------------------------------------------------------------------------------------------------------------------------------------------------------------------------------------------------------------------------------------------------------------------------------------------------------------------------------	---------------------------------------------------------------------------------------------------------------------------------------------------------------------------------------------------------------------------------------------------------------------------------------------------------------------------------------------------------------------------------------------------------------------------------------------------------------------------------------------------------------------------------------------------------

23. PROPOSED CASING AND CEMENT PROGRAM					
SIZE OF HOLE	SIZE OF CASING	WEIGHT PER FOOT	SETTING DEPTH	SACKS OF CEMENT	EST. TOP
9 1/2"	7"	20#	Approx 1200'	Circulate	
6 1/2"	4 1/2 or 5 1/2"	10.5-15.5#	" 1850'	175 sacks	

We propose to drill a San Andres test, 1200' of intermediate casing will be set 100 feet below the Artesian Water zone. The cement will be circulated. A tapered string of production string of 4 1/2" and 5 1/2" casing will be run, if productive, perforate and stimulate as needed for production.

Mud Program: - Gel & LCM to 1200', Fresh water to TD.

BOP Program: 10" hydraulic BOP's will be set on 7" casing and tested.

APPROVAL VALID  
FOR 90 DAYS UNLESS  
DRILLING COMMENCED,

EXPIRES 4-30-77

IN ABOVE SPACE DESCRIBE PROPOSED PROGRAM: IF PROPOSAL IS TO DEEPEN OR PLUG BACK, GIVE DATA ON PRESENT PRODUCTIVE ZONE AND PROPOSED NEW PRODUCTIVE ZONE. GIVE BLOWOUT PREVENTER PROGRAM, IF ANY.

I hereby certify that the information above is true and complete to the best of my knowledge and belief.

Signed Christine Tomlinson Title Geol. Secty Date 1-27-77

(This space for State Use)

APPROVED BY W.A. Gussert TITLE SUPERVISOR, DISTRICT II DATE JAN 31 1977

CONDITIONS OF APPROVAL, IF ANY:

Cement must be circulated to  
surface behind 7" casing

Notify N.M.O.C.C. in sufficient  
time to witness cementing  
the 7" casing

NEW MEXICO OIL CONSERVATION COMMISSION  
WELL LOCATION AND ACREAGE DEDICATION PLAT

Form C-102  
Supersedes C-128  
Effective 1-1-65

All distances must be from the outer boundaries of the Section.

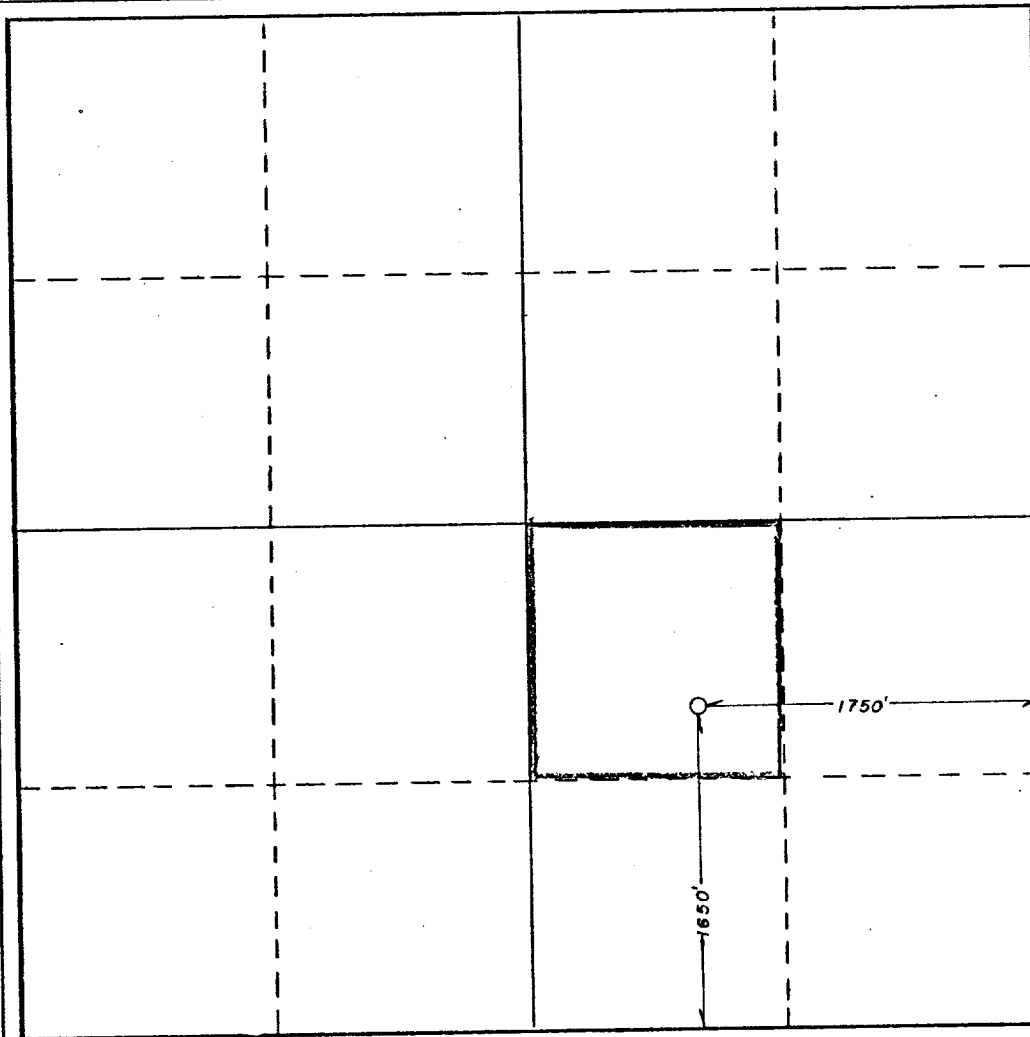
Operator <b>YATES PETROLEUM COMPANY</b>		Lease <b>Gulf HI</b>		Well No. <b>1</b>
Unit Letter <b>"J"</b>	Section <b>28</b>	Township <b>18 South</b>	Range <b>26 East</b>	County <b>Eddy</b>
Actual Footage Location of Well: <b>1650</b> feet from the <b>South</b> line and <b>1750</b> feet from the <b>East</b> line				
Ground Level Elev. <b>3374</b>	Producing Formation <b>San Andres</b>	Pool <b>Atoica (S.A.)</b>	Dedicated Acreage: <b>40</b> Acres	

1. Outline the acreage dedicated to the subject well by colored pencil or hachure marks on the plat below.
2. If more than one lease is dedicated to the well, outline each and identify the ownership thereof (both as to working interest and royalty).
3. If more than one lease of different ownership is dedicated to the well, have the interests of all owners been consolidated by communitization, unitization, force-pooling, etc?

☐ Yes ☐ No If answer is "yes," type of consolidation \_\_\_\_\_

If answer is "no," list the owners and tract descriptions which have actually been consolidated. (Use reverse side of this form if necessary.) \_\_\_\_\_

No allowable will be assigned to the well until all interests have been consolidated (by communitization, unitization, forced-pooling, or otherwise) or until a non-standard unit, eliminating such interests, has been approved by the Commission.



CERTIFICATION

I hereby certify that the information contained herein is true and complete to the best of my knowledge and belief.

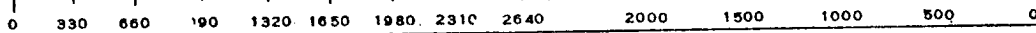
*Eddie M. Mahfood*

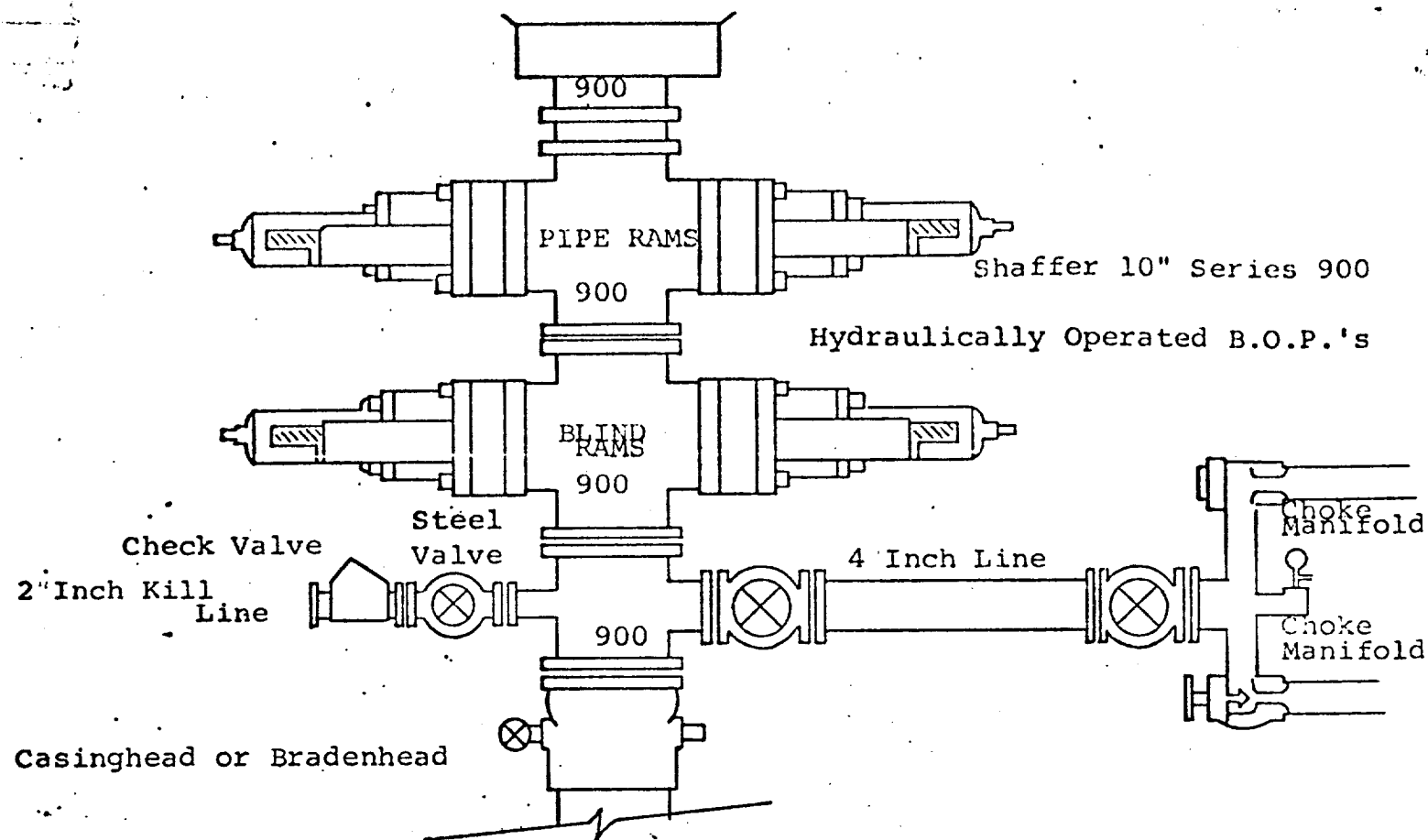
Name  
**Eddie M. Mahfood**  
Position  
**Engineer**  
Company  
**Yates Petroleum Corp.**

Date  
**1-25-77**

I hereby certify that the well location shown on this plat was plotted from field notes of actual surveys made by me or under my supervision, and that the same is true and correct to the best of my knowledge and belief.

Date Survey  
**January 28, 1977**  
Registered Professional Engineer  
and/or Licensed Surveyor  
**L. JONES**  
No. **3640**  
Certified  
**REGISTERED LAND SURVEYOR**





THE FOLLOWING CONSTITUTE MINIMUM BLOWOUT PREVENTER REQUIREMENTS

1. All preventers to be hydraulically operated with secondary manual controls installed prior to drilling out from under casing.
2. Choke outlet to be a minimum of 4" diameter.
3. Kill line to be of all steel construction of 2" minimum diameter.
4. All connections from operating manifolds to preventers to be all steel, hole or tube a minimum of one inch in diameter.
5. The available closing pressure shall be at least 15% in excess of that required with sufficient volume to operate the B.O.P.'s.
6. All connections to and from preventer to have a pressure rating equivalent to that of the B.O.P.'s.
7. Inside blowout preventer to be available on rig floor.
8. Operating controls located a safe distance from the rig floor.
9. Hole must be kept filled on trips below intermediate casing. Operator not responsible for blowouts resulting from not keeping hole full.
10. D. P. float must be installed and used below zone of first gas intrusion.