

NO. OF COPIES RECEIVED	
DISTRIBUTION	
SANTA FE	/
FILE	/
U.S.G.S.	2
LAND OFFICE	/
OPERATOR	/

NEW MEXICO OIL CONSERVATION COMMISSION

FEB 8 1977

O. C. C.

ARTESIA OFFICE

30-015-22045

Form C-101  
Revised 1-1-65

5A. Indicate Type of Lease	
STATE <input checked="" type="checkbox"/>	FILE <input type="checkbox"/>
5. State Oil & Gas Lease No.	
L-4954	
7. Unit Agreement Name	
8. Firm or Lease Name	
4-Dinkus "GV" State	
9. Well No.	Com
1	
10. Field and Well or Wellhead	
Undesignated	
17. County	
Eddy	
19. Proposed Depth	19A. Formation
approx. 8850'	Morrow
20. Rotary or C.T.	
Rotary	
21. Elevation (Show whether D.P., R.I., etc.)	21A. Cement & Status Plug, Bond
3551' GR	Blanket
21B. Drilling Contractor	22. Approx. Date Work will start
Ard Drilling Company	2-11-77

APPLICATION FOR PERMIT TO DRILL, DEEPEN, OR PLUG BACK

1a. Type of Work

b. Type of Well DRILL ☒ DEEPEN ☐ PLUG BACK ☐

OIL WELL ☐ GAS WELL ☐ OTHER ☐ SINGLE ZONE ☒ MULTIPLE ZONE ☐

2. Name of Operator

Yates Petroleum Corporation

3. Address of Operator

207 South 4th Street - Artesia, NM 88210

4. Location of Well

UNIT LETTER 0 LOCATED 660 FEET FROM THE South LINE

AND 1980 FEET FROM THE East LINE OF SEC. 16 TWP. 18S RGE. 25E

21. Elevation (Show whether D.P., R.I., etc.)

3551' GR

21A. Cement & Status Plug, Bond

Blanket

21B. Drilling Contractor

Ard Drilling Company

22. Approx. Date Work will start

2-11-77

PROPOSED CASING AND CEMENT PROGRAM

SIZE OF HOLE	SIZE OF CASING	WEIGHT PER FOOT	SETTING DEPTH	SACKS OF CEMENT	EST. TOP
17½"	13-3/8"	48#	Approx. 380'	Circulate	
12¼-11"	8-5/8"	24#	" 1270	Circulate	
7-7/8"	4½ or 5½"	10.5-11.6# or 15.5-17#	" 8850	250 sacks	

Propose to drill and test the Morrow and intermediate formations. Approx. 380' of surface casing will be set to shut off gravel and caving, cemented to surface. Intermediate casing will be set 100' below the Artesian Water zone, if commercial pay is encountered, will run 4½" or 5½" casing, cement, perforate and stimulate as needed for production.

Mud Program: - FW Gel & LCM from surface to 1270', fresh water to 4000', KCL water to 6500', flosal-starch-KCL to 7100', Flosal-Drispak-KCL to TD.

BOP Program: - BOP's will be installed on 8-5/8" casing and tested, pipe rams daily, blind rams on trips.

Gas acreage not dedicated.

APPROVAL VALID  
FOR 90 DAYS UNLESS  
DRILLING COMMENCED,

IN ABOVE SPACE DESCRIBE PROPOSED PROGRAM; IF PROPOSAL IS TO DEEPEN OR PLUG BACK, GIVE DATA ON PRESENT PRODUCTIVE ZONE AND PROPOSED NEW PRODUCTIVE ZONE. GIVE BLOWOUT PREVENTER PROGRAM, IF ANY.

I hereby certify that the information above is true and complete to the best of my knowledge and belief.

Signed Christine Anderson Title Engineer Date 2-7-77

(This space for State Use)

APPROVED BY W.A. Green TITLE SUPERVISOR, DISTRICT II DATE FEB 9 1977

CONDITIONS OF APPROVAL, IF ANY:

Notify N.M.O.C.C. in sufficient time to witness cementing the 8 7/8" casing

See sample 13 7/8" 48 7/8"

NE EXICO OIL CONSERVATION COMMISSIC  
WELL LOCATION AND ACREAGE DEDICATION PLAT

Form C-102  
Supersedes C-128  
Effective 1-1-65

All distances must be from the outer boundaries of the Section.

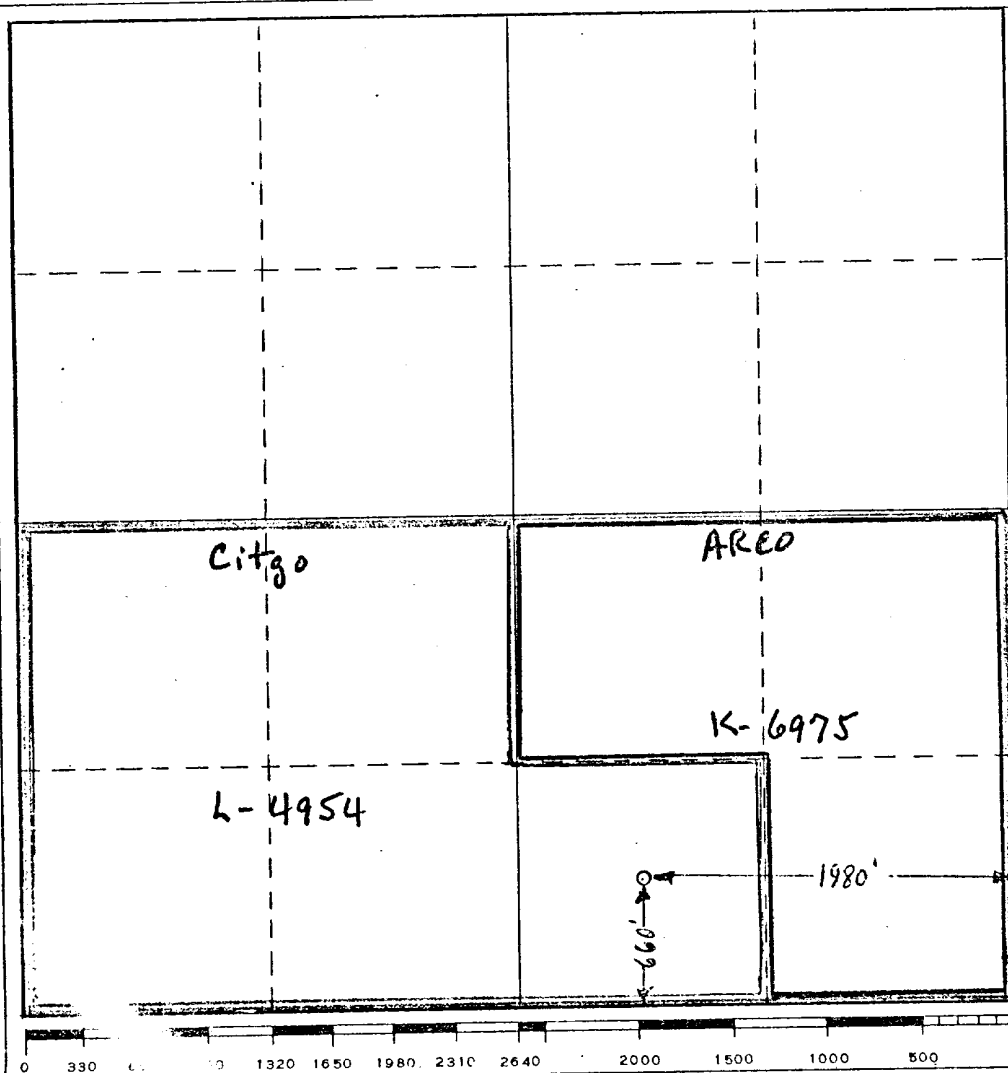
Operator <b>Yates Petroleum Corp</b>			Lease <b>4 Dinkus "GV" State</b>		Well No. <b>1</b>
Unit Letter <b>0</b>	Section <b>16</b>	Township <b>18-S</b>	Range <b>25-E</b>	County <b>Eddy</b>	
Actual Footage Location of Well: <b>660</b> feet from the <b>South</b> line and <b>1980</b> feet from the <b>East</b> line					
Ground Level Elev. <b>3551</b>	Producing Formation <b>Morrow</b>	Pool <b>Wildcat Undesignated</b>		Dedicated Acreage: <b>320</b> Acres	

- Outline the acreage dedicated to the subject well by colored pencil or hachure marks on the plat below.
- If more than one lease is dedicated to the well, outline each and identify the ownership thereof (both as to working interest and royalty).
- If more than one lease of different ownership is dedicated to the well, have the interests of all owners been consolidated by communitization, unitization, force-pooling, etc?

☒ Yes ☐ No If answer is "yes," type of consolidation **Being Communitized**

If answer is "no," list the owners and tract descriptions which have actually been consolidated. (Use reverse side of this form if necessary.)

No allowable will be assigned to the well until all interests have been consolidated (by communitization, unitization, forced-pooling, or otherwise) or until a non-standard unit, eliminating such interests, has been approved by the Commission.



CERTIFICATION

I hereby certify that the information contained herein is true and complete to the best of my knowledge and belief.

*Eddie M. Mahfood*

Name  
**Eddie M. Mahfood**

Position  
**Engineer**

Company  
**Yates Pet. Corporation**

Date  
**2-5-77**

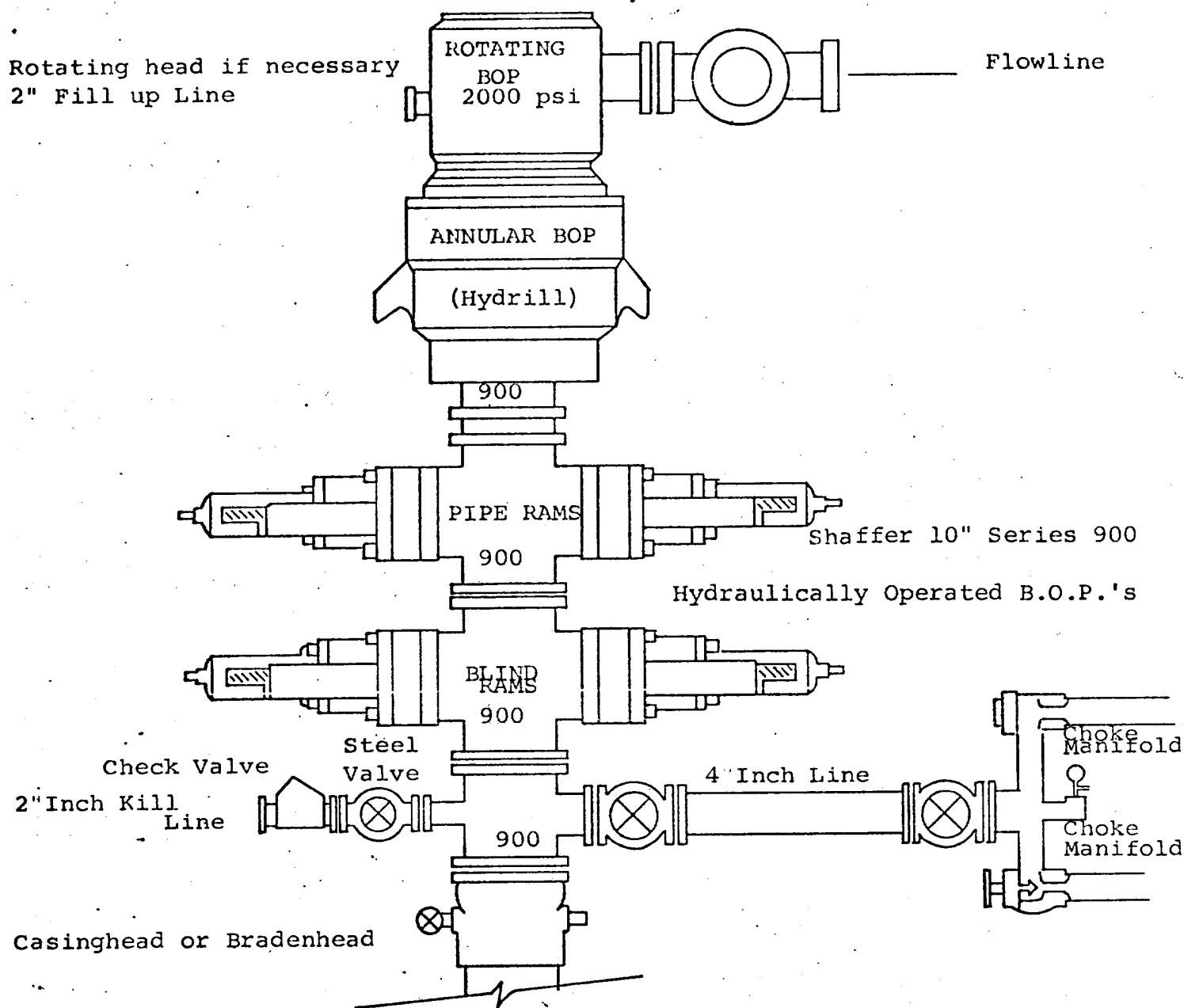
I hereby certify that the well location shown on this plat was plotted from field notes of actual surveys made by me or under my supervision, and that the same is true and correct to the best of my knowledge and belief.

*Eddie M. Mahfood*

Date Surveyed:  
**11-16-76**

Registered Professional Engineer  
and/or Land Surveyor

Certificate No.  
**4605**



THE FOLLOWING CONSTITUTE MINIMUM BLOWOUT PREVENTER REQUIREMENTS

1. All preventers to be hydraulically operated with secondary manual controls installed prior to drilling out from under casing.
2. Choke outlet to be a minimum of 4" diameter.
3. Kill line to be of all steel construction of 2" minimum diameter.
4. All connections from operating manifolds to preventers to be all steel. hole or tube a minimum of one inch in diameter.
5. The available closing pressure shall be at least 15% in excess of that required with sufficient volume to operate the B.O.P.'s.
6. All connections to and from preventer to have a pressure rating equivalent to that of the B.O.P.'s.
7. Inside blowout preventer to be available on rig floor.
8. Operating controls located a safe distance from the rig floor.
9. Hole must be kept filled on trips below intermediate casing. Operator not responsible for blowouts resulting from not keeping hole full.
10. D. P. float must be installed and used below zone of first gas intrusion.