

NO. OF COPIES RECEIVED	5
DISTRIBUTION	
SANTA FE	1
FILE	1
U.S.G.S.	2
LAND OFFICE	
OPERATOR	1

NEW MEXICO OIL CONSERVATION COMMISSION

RECEIVED

MAR 3 1977

30-015-22068

Form C-101
Revised 1-1-65

5A. Indicate Type of Lease	
STATE <input type="checkbox"/>	FEE <input checked="" type="checkbox"/>
5. State Oil & Gas Lease No.	
7. Unit Agreement No.	
8. Firm or Lease Name	
Midwest "HH" Com	
9. Well No.	
1	
10. Field and Pool, or Wildcat	
Wildcat	
11. County	
Eddy	
12. Proposed Depth	13A. Formation
9800'	Morrow
13B. Drilling Contractor	21. Rotary or C.T.
Moran Drilling Co.	Rotary
22. Approx. Date Work will start	
March 7, 1977	

1a. Type of Work		ARTESIA, OFFICE	
b. Type of Well		DEEPEN <input type="checkbox"/>	
DRILL <input checked="" type="checkbox"/>		PLUG BACK <input type="checkbox"/>	
OIL WELL <input type="checkbox"/>		SINGLE ZONE <input checked="" type="checkbox"/>	
GAS WELL <input checked="" type="checkbox"/>		MULTIPLE ZONE <input type="checkbox"/>	
2. Name of Operator			
Yates Petroleum Corporation			
3. Address of Operator			
207 South Fourth Street, Artesia, NM 88210			
4. Location of Well			
UNIT LETTER F LOCATED 1980 FEET FROM THE North LINE			
AND 1980 FEET FROM THE West LINE OF SEC. 21 T4P. 18S RGE. 27E NMRM			
21. Elevations (Show whether D.R., etc.)			
3345'			
21A. Mud & Sluts Plug Bond			
Blanket			
21B. Drilling Contractor			
Moran Drilling Co.			
22. Approx. Date Work will start			
March 7, 1977			

PROPOSED CASING AND CEMENT PROGRAM

SIZE OF HOLE	SIZE OF CASING	WEIGHT PER FOOT	SETTING DEPTH	SACKS OF CEMENT	EST. TOP
17 1/2"	13-3/8"	48#	Approx. 250'	200 sacks	Circulate
12 1/4"	8-5/8"	24#	Approx. 1650'	550 sacks	Circulate
7-7/8"	5 1/2" or 4 1/2"	17# K-55 or 11.6# K-55	Approx. 9800'	250 sacks	

Propose to drill and test the Morrow and intermediate formations. Approximately 250 feet of surface casing will be set to shut off gravel & cavings, cement circulated. Intermediate casing will be set below the Premier Sands, cement circulated. If commercial pay is encountered, we will run 5 1/2" or 4 1/2" casing, cement, perforate and stimulate as needed for production.

MUD PROGRAM: F.W. Gel & LCM to 1650', fresh water & lime to 6000', KCL water & flosal to 9200', Flosal-Drispak-KCL mud to TD; MW 9.1-9.3, Vis 34-38, WL 12-7.

BOP PROGRAM: BOP's & hydril on 8-5/8" casing and tested, pipe rams daily, blind rams on trips.

Gas Acreage Not Dedicated.

EXPIRES

6-4-77

IN ABOVE SPACE DESCRIBE PROPOSED PROGRAM IF PROPOSAL IS TO DEEPEN OR PLUG BACK, GIVE DATA ON PRESENT PRODUCTIVE ZONE AND PROPOSED NEW PRODUCTIVE ZONE. GIVE BLOWOUT PREVENTER PROGRAM, IF ANY.

I hereby certify that the information above is true and complete to the best of my knowledge and belief.

Signed Eddie M. Mahford Title Engineer Date 3-2-77

(This space for State Use)

APPROVED BY W.A. Gressett TITLE SUPERVISOR, DISTRICT H DATE MAR 4 1977

CONDITIONS OF APPROVAL, IF ANY:

Consent that be circulated to surface below 13 7/8" casing

*Notify N.M.O.C. in sufficient time to witness casing the 8 7/8" casing

N MEXICO OIL CONSERVATION COMMISS
WELL LOCATION AND ACREAGE DEDICATION PLAT

Form C-102
Supersedes C-128
Effective 1-1-65

All distances must be from the outer boundaries of the Section.

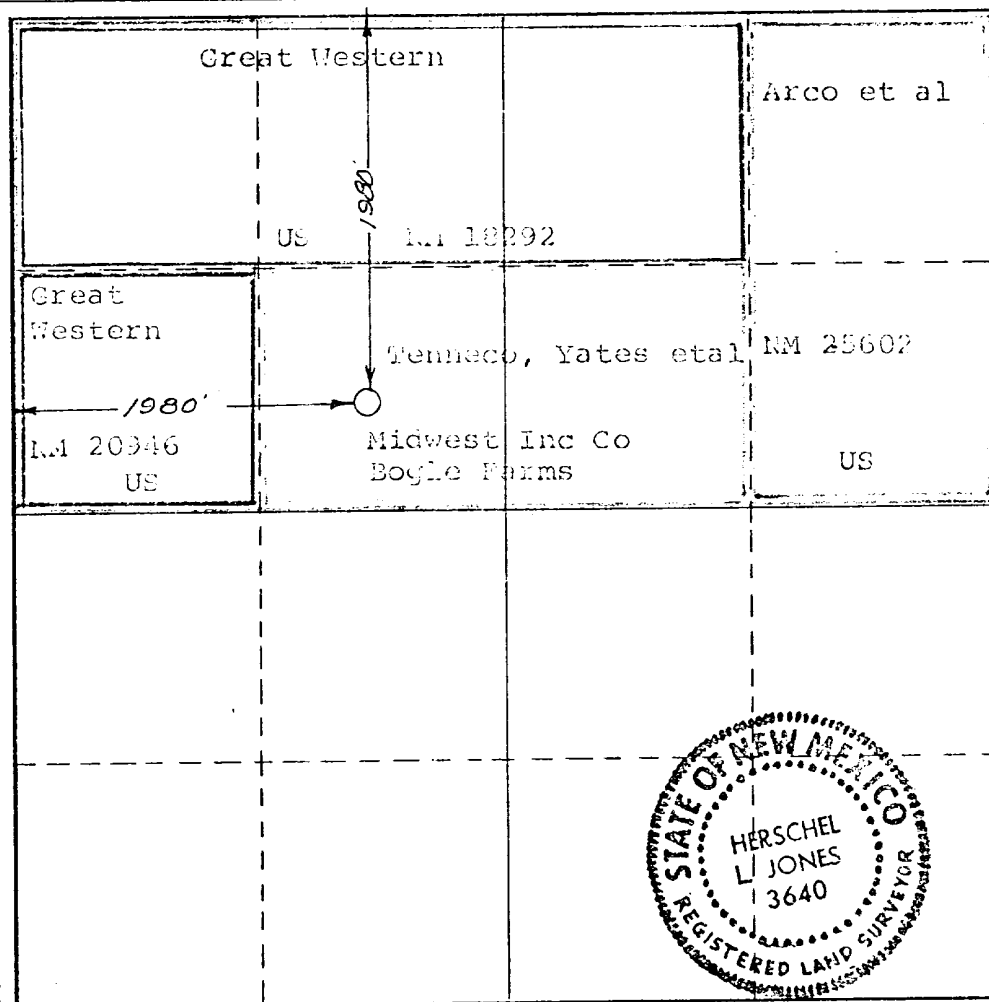
Operator YATES PETROLEUM CORPORATION			Lease Midwest HH		Well No. 1
Unit Letter "F"	Section 21	Township 18 South	Range 27 East	County Eddy	
Actual Footage Location of Well: 1980 feet from the North line and 1980 feet from the West line					
Ground Level Elev. 3345	Producing Formation Morrow		Pool Wildcat	Dedicated Acreage: 320 Acres	

- Outline the acreage dedicated to the subject well by colored pencil or hachure marks on the plat below.
- If more than one lease is dedicated to the well, outline each and identify the ownership thereof (both as to working interest and royalty).
- If more than one lease of different ownership is dedicated to the well, have the interests of all owners been consolidated by communitization, unitization, force-pooling, etc?

☒ Yes ☐ No If answer is "yes," type of consolidation Being communitized

If answer is "no," list the owners and tract descriptions which have actually been consolidated. (Use reverse side of this form if necessary.) _____

No allowable will be assigned to the well until all interests have been consolidated (by communitization, unitization, forced-pooling, or otherwise) or until a non-standard unit, eliminating such interests, has been approved by the Commission.



CERTIFICATION

I hereby certify that the information contained herein is true and complete to the best of my knowledge and belief.

Eddie L. Lathford

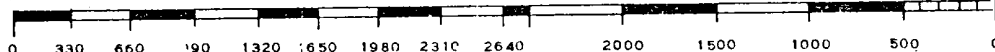
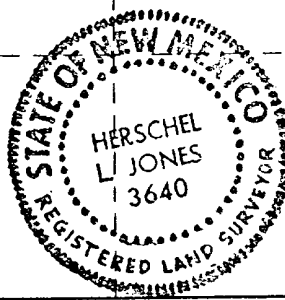
Name
Eddie L. Lathford
Position
Engineer
Company
Yates Petroleum Corp.
Date
3-2-77

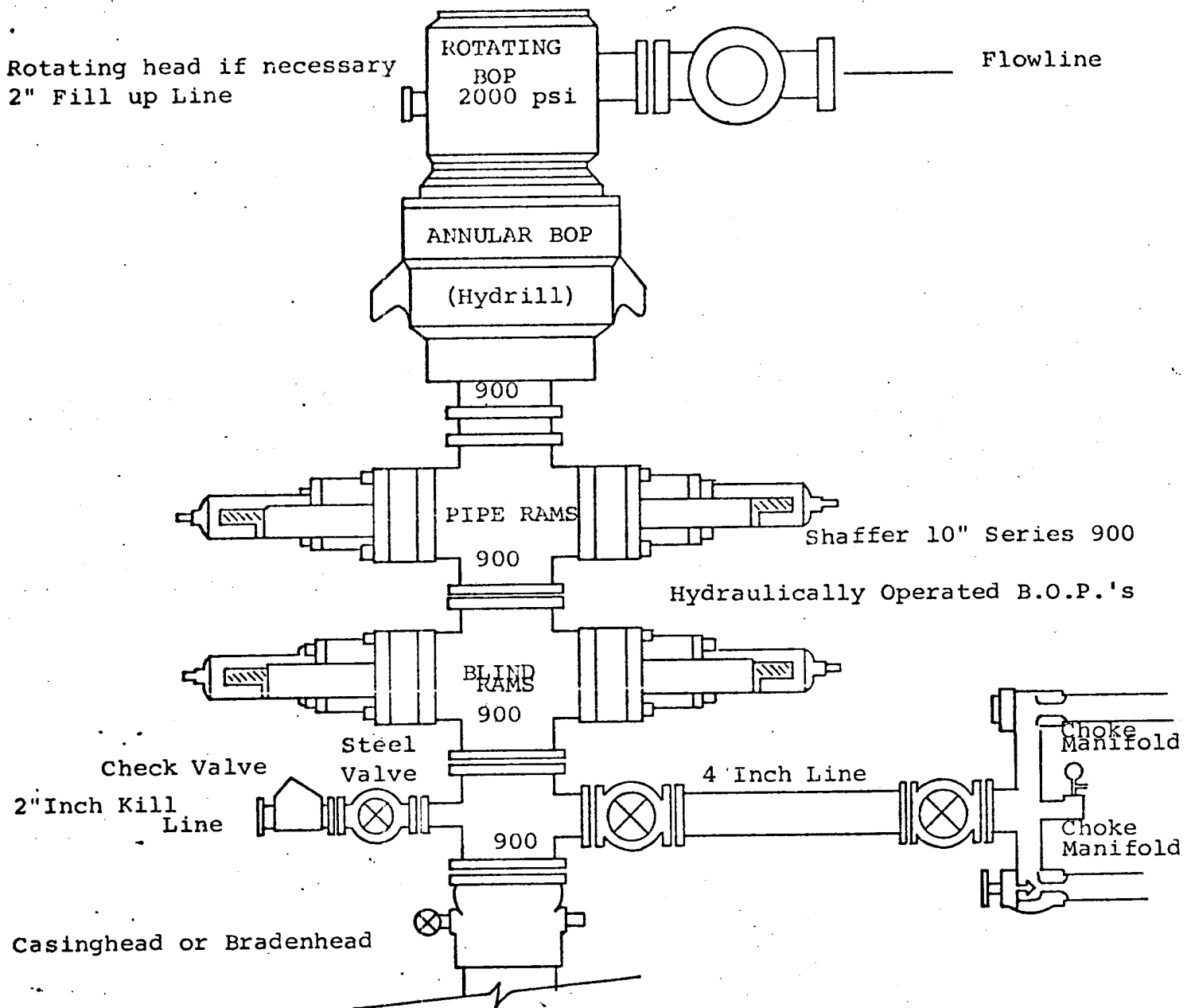
I hereby certify that the well location shown on this plat was plotted from field notes of actual surveys made by me or under my supervision, and that the same is true and correct to the best of my knowledge and belief.

Date Surveyed
February 28, 1977

Registered Professional Engineer and/or Land Surveyor

Herschel L. Jones
Certificate No.
3640





THE FOLLOWING CONSTITUTE MINIMUM BLOWOUT PREVENTER REQUIREMENTS

1. All preventers to be hydraulically operated with secondary manual controls installed prior to drilling out from under casing.
2. Choke outlet to be a minimum of 4" diameter.
3. Kill line to be of all steel construction of 2" minimum diameter.
4. All connections from operating manifolds to preventers to be all steel. hole or tube a minimum of one inch in diameter.
5. The available closing pressure shall be at least 15% in excess of that required with sufficient volume to operate the B.O.P.'s.
6. All connections to and from preventer to have a pressure rating equivalent to that of the B.O.P.'s.
7. Inside blowout preventer to be available on rig floor.
8. Operating controls located a safe distance from the rig floor.
9. Hole must be kept filled on trips below intermediate casing. Operator not responsible for blowouts resulting from not keeping hole full.
10. D. P. float must be installed and used below zone of first gas intrusion.