

NO. OF COPIES RECEIVED	5
DISTRIBUTION	
SANTA FE	1
FILE	1
U.S.G.S.	2
LAND OFFICE	
OPERATOR	1

RECEIVED  
NEW MEXICO OIL CONSERVATION COMMISSION

APR 22 1977

O. C. C.  
ARTESIA, OFFICE

30-015-22136

Form C-101  
Revised 1-1-55

5A. Indicate Type of Lease STATE <input type="checkbox"/> FEE <input checked="" type="checkbox"/>
5. State Oil & Gas Lease No.
7. Unit Agreement Name
8. Farm or Lease Name Yates AS Fee
9. Well No. 5
10. Field and Pool, or Wildcat Penasco Draw (S.A.)
12. County Eddy

APPLICATION FOR PERMIT TO DRILL, DEEPEN, OR PLUG BACK

1a. Type of Work DRILL <input checked="" type="checkbox"/> DEEPEN <input type="checkbox"/> PLUG BACK <input type="checkbox"/>	7. Unit Agreement Name
b. Type of Well OIL WELL <input checked="" type="checkbox"/> GAS WELL <input type="checkbox"/> OTHER <input type="checkbox"/> SINGLE ZONE <input type="checkbox"/> MULTIPLE ZONE <input type="checkbox"/>	8. Farm or Lease Name Yates AS Fee
2. Name of Operator Yates Petroleum Corporation	9. Well No. 5
3. Address of Operator 207 South 4th Street - Artesia, NM 88210	10. Field and Pool, or Wildcat Penasco Draw (S.A.)
4. Location of Well UNIT LETTER I LOCATED 2200 FEET FROM THE South LINE AND 330 FEET FROM THE East LINE OF SEC. 26 T4P. 18S R5E. 25E N40PM	12. County Eddy
18. Proposed Depth Approx. 1600'	19A. Formation San Andres
21. Elevation (Show whether DT, RT, etc.) 3470' GR	20. Rotary or C.T. Rotary
21A. Kind & Status Plug, Head Blanket	21B. Drilling Contractor Byrd Drilling Company
22. Approx. Date Work will start April 30, 1977	

PROPOSED CASING AND CEMENT PROGRAM

SIZE OF HOLE	SIZE OF CASING	WEIGHT PER FOOT	SETTING DEPTH	SACKS OF CEMENT	EST. TOP
15 1/2"	10-3/4"	32.75#	Approx 300'	Circulate	
9 1/2"	7"	20#	" 1100'	Circulate	
6 1/4"	4 1/2" or 5 1/2"	10.5 or 14#	" 1600'	150 sx (Circulate)	

Propose to drill a San Andres test. Approximately 300' of surface casing will be set, cement circulated, to shut off gravel and caving, and intermediate casing will be set 100 feet below the Artesian water zone and cemented to the surface. A tapered production string will be run, cemented to surface, perforated and sand frac'd for production.

Mud Program: F.W. Gel & LCM to 1100', fresh water to TD.

BOP Program: BOP's will be installed on 7" casing and tested

APPROVAL VALID  
FOR 90 DAYS UNLESS  
DRILLING COMMENCED,

EXPIRES 7-26-77

IN ABOVE SPACE DESCRIBE PROPOSED PROGRAM; IF PROPOSAL IS TO DEEPEN OR PLUG BACK, GIVE DATA ON PRESENT PRODUCTIVE ZONE AND PROPOSED NEW PRODUCTIVE ZONE, GIVE BLOWOUT PREVENTER PROGRAM, IF ANY.

I hereby certify that the information above is true and complete to the best of my knowledge and belief.

Signed Christina Johnson Title Geol. Secty

Date 4-21-77

(This space for State Use)

APPROVED BY W. A. Gressett TITLE SUPERVISOR, DISTRICT II

DATE APR 26 1977

CONDITIONS OF APPROVAL, IF ANY:

Cement must be circulated to  
surface behind 10 3/4" & 7" casing

Notify N.M.O.C.C. in sufficient  
time to witness cementing  
the 7" casing

NEW MEXICO OIL CONSERVATION COMMISSION  
WELL LOCATION AND ACREAGE DEDICATION PLAT

Form C-102  
Supersedes C-128  
Effective 1-1-65

All distances must be from the outer boundaries of the Section.

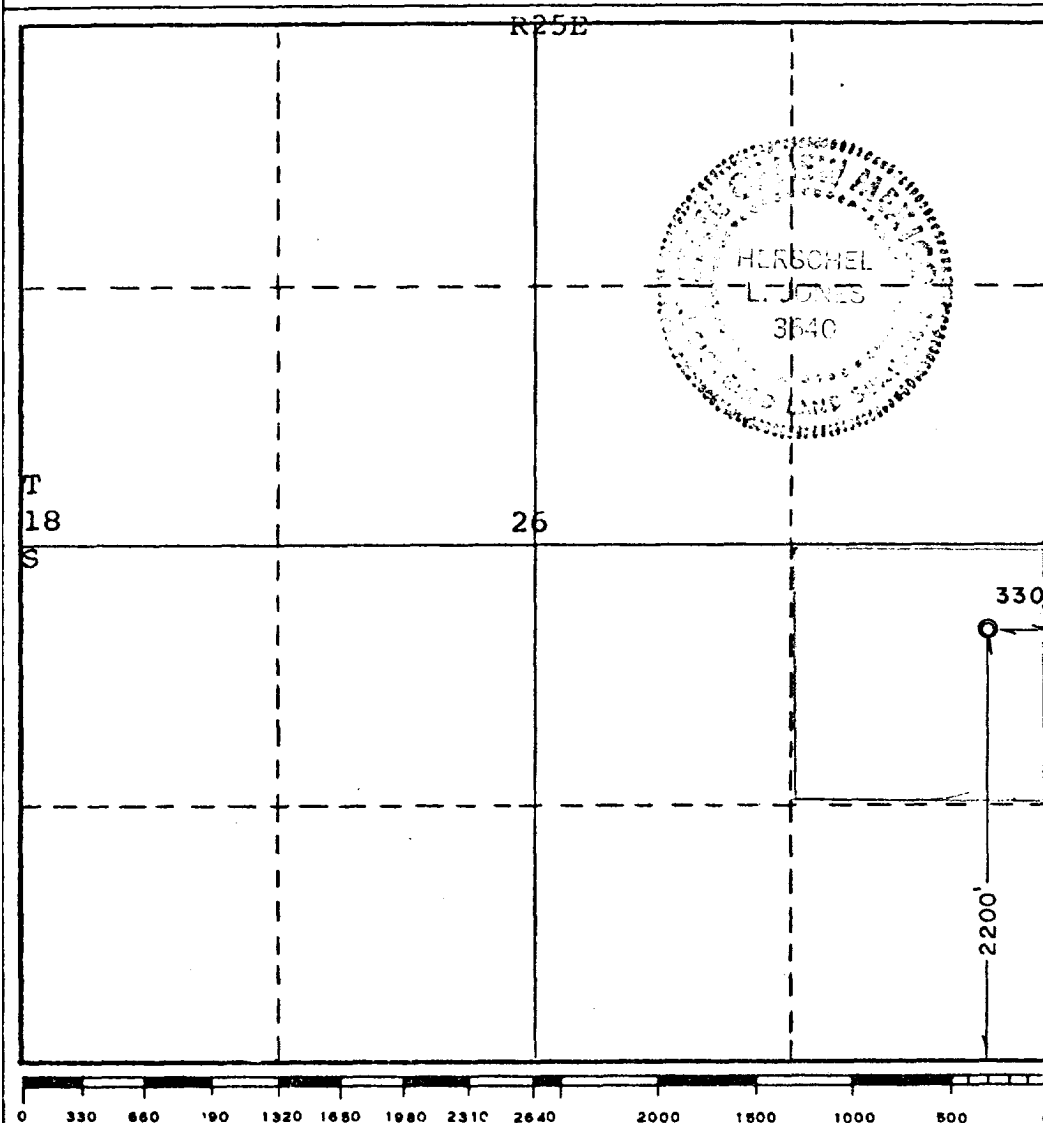
Operator <b>YATES PETROLEUM CORPORATION</b>			Lease <b>YATES AS FEE</b>		Well No. <b>5</b>
Unit Letter <b>I</b>	Section <b>26</b>	Township <b>18</b>	Range <b>25</b>	County <b>EDDY</b>	
Actual Footage Location of Well: <b>2200</b> feet from the <b>South</b> line and <b>330</b> feet from the <b>East</b> line					
Ground Level Elev. <b>3470</b>	Producing Formation <b>San Andres</b>		Pool <b>Penasco (Yero S.A.)</b>	Dedicated Acreage: <b>40</b> Acres	

1. Outline the acreage dedicated to the subject well by colored pencil or hachure marks on the plat below.
2. If more than one lease is dedicated to the well, outline each and identify the ownership thereof (both as to working interest and royalty).
3. If more than one lease of different ownership is dedicated to the well, have the interests of all owners been consolidated by communitization, unitization, force-pooling, etc?

☐ Yes   ☐ No   If answer is "yes," type of consolidation \_\_\_\_\_

If answer is "no," list the owners and tract descriptions which have actually been consolidated. (Use reverse side of this form if necessary.) \_\_\_\_\_

No allowable will be assigned to the well until all interests have been consolidated (by communitization, unitization, forced-pooling, or otherwise) or until a non-standard unit, eliminating such interests, has been approved by the Commission.



**CERTIFICATION**

I hereby certify that the information contained herein is true and complete to the best of my knowledge and belief.

*Eddie M. Mahfood*  
Name  
**Eddie M. Mahfood**

Position  
**Engineer**

Company  
**Yates Petroleum Corp.**

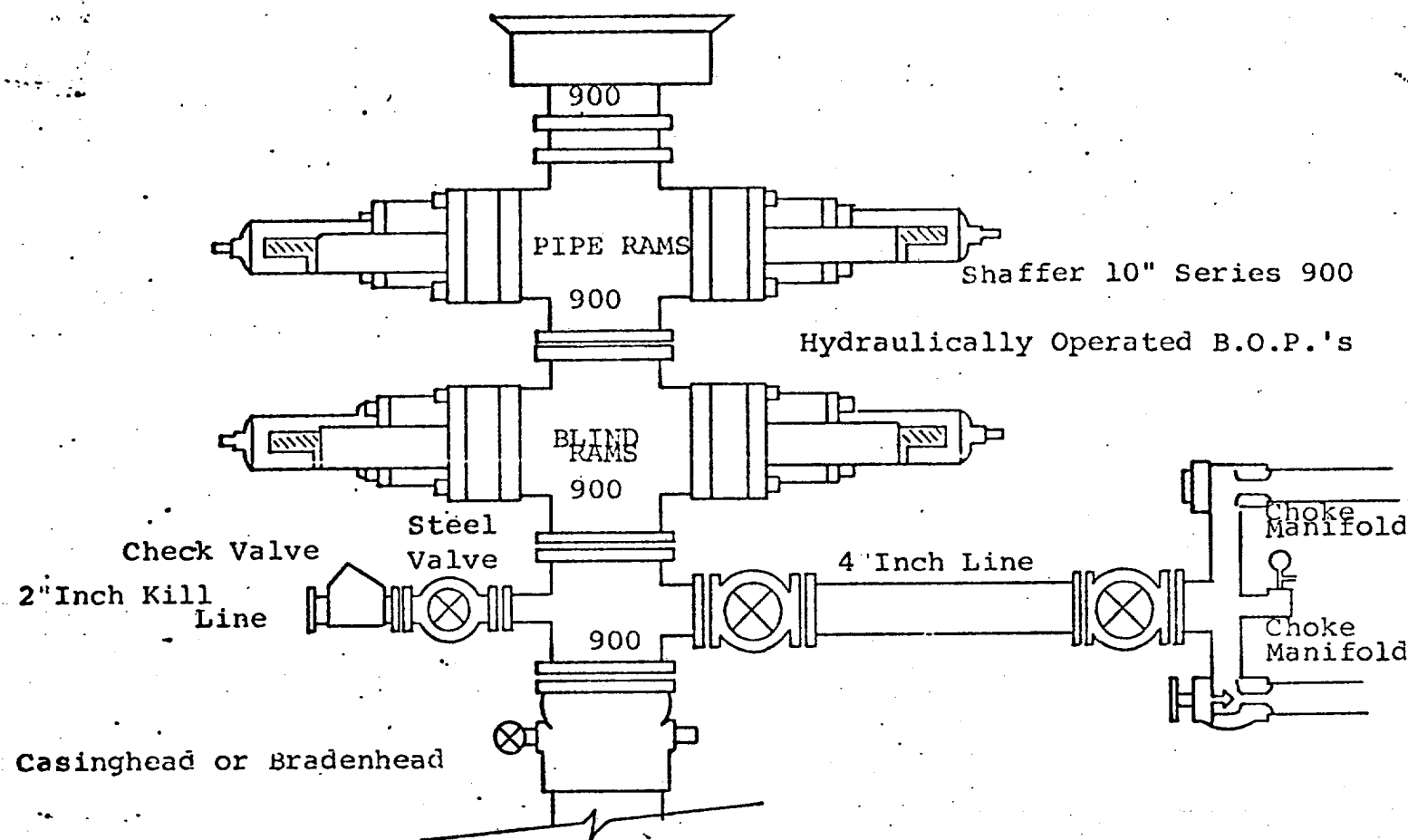
Date  
**4-21-77**

I hereby certify that the well location shown on this plat was plotted from field notes of actual surveys made by me or under my supervision, and that the same is true and correct to the best of my knowledge and belief.

Date Surveyed  
**2/21/77**

Registered Professional Engineer and/or Land Surveyor

*Herschel L. Jones*  
Certificate No.



THE FOLLOWING CONSTITUTE MINIMUM BLOWOUT PREVENTER REQUIREMENTS

1. All preventers to be hydraulically operated with secondary manual controls installed prior to drilling out from under casing.
2. Choke outlet to be a minimum of 4" diameter.
3. Kill line to be of all steel construction of 2" minimum diameter.
4. All connections from operating manifolds to preventers to be all steel, hole or tube a minimum of one inch in diameter.
5. The available closing pressure shall be at least 15% in excess of that required with sufficient volume to operate the B.O.P.'s.
6. All connections to and from preventer to have a pressure rating equivalent to that of the B.O.P.'s.
7. Inside blowout preventer to be available on rig floor.
8. Operating controls located a safe distance from the rig floor.
9. Hole must be kept filled on trips below intermediate casing. Operator not responsible for blowouts resulting from not keeping hole full.
10. D. P. float must be installed and used below zone of first gas intrusion.