

NO. OF COPIES RECEIVED	✓
DISTRIBUTION	
SANTA FE	✓
FILE	✓
U.S.G.S.	2
LAND OFFICE	✓
OPERATOR	✓

RECEIVED  
NEW MEXICO OIL CONSERVATION COMMISSION

MAY 11 1977

O. C. C.  
ARTESIA, OFFICE

30-015-22152  
Form C-101  
Revised 1-1-65

5A. Indicate Type of Lease STATE <input checked="" type="checkbox"/> FEDERAL <input type="checkbox"/>
5. State Oil & Gas Lease No. K-6974

APPLICATION FOR PERMIT TO DRILL, DEEPEN, OR PLUG BACK

1a. Type of Work b. Type of Well OIL WELL <input type="checkbox"/> GAS WELL <input checked="" type="checkbox"/> OTHER <input type="checkbox"/> SINGLE ZONE <input checked="" type="checkbox"/> MULTIPLE ZONE <input type="checkbox"/>		7. Unit Agreement Name	
2. Name of Operator Yates Petroleum Corporation		8. Firm or Lease Name State "HT"	
3. Address of Operator 207 South 4th Street - Artesia, NM 88210		9. Well No. 1	
4. Location of Well UNIT LETTER F LOCATED 1980 FEET FROM THE North LINE 1980 West 24 18S 24E AND FEET FROM THE LINE OF SEC. TWP. RGE. NMPM		10. Field and Pool, or Wildcat Undesignated (Morrow)	
21. Elevations (Show whether D.P., K.L., etc.) 3637' GR		12. County Eddy	
21A. Kind & Status Plug, Bond Blanket		13. Proposed Depth Approx 8750'	
21B. Drilling Contractor		14. Formation Morrow	
21C. Rotary or C.T.		CT & Rotary	
22. Approx. Date Work will start May 13, 1977			

23. PROPOSED CASING AND CEMENT PROGRAM

SIZE OF HOLE	SIZE OF CASING	WEIGHT PER FOOT	SETTING DEPTH	SACKS OF CEMENT	EST. TOP
16"	13-3/8"	48#	Approx 350'	250	Circulate
12 1/4"	8-5/8"	24#	" 1070'	550	Circulate
7-7/8"	5 1/2" or 4 1/2"	15.5-17# or 10.5-11.6#	" TD	250-350	

Propose to drill and test the Morrow and intermediate formations. Will spud 8" Cable Tool hole and ream to 16" for approx. 350' of surface casing. Will set intermediate casing 100 feet below the Artesian Water zone. If commercial will run 5 1/2" or 4 1/2" casing and cement with about 600 feet of cement cover, will perforate and stimulate as needed for production.

Mud Program: - FW gel & LCM to 1070', Water to 6000', Flosal-Drispak-KCL mud to Total Depth.

BOP Program: - Hydril & BOP's on 8-5/8" casing and tested, pipe rams tested daily.

Gas Acreage not dedicated

APPROVAL VALID  
FOR 90 DAYS UNLESS  
DRILLING COMMENCED,

EXPIRES 8-13-77

IN ABOVE SPACE DESCRIBE PROPOSED PROGRAM; IF PROPOSAL IS TO DEEPEN OR PLUG BACK, GIVE DATA ON PRESENT PRODUCTIVE ZONE AND PROPOSED NEW PRODUCTIVE ZONE. GIVE BLOWOUT PREVENTER PROGRAM, IF ANY.

I hereby certify that the information above is true and complete to the best of my knowledge and belief.

Signed Eddie M. Walsh Title Engineer Date 5-10-77  
(This space for State Use)

APPROVED BY W. A. Gressett TITLE SUPERVISOR, DISTRICT II DATE MAY 13 1977

CONDITIONS OF APPROVAL, IF ANY:

Cement must be circulated to  
surface behind 13 3/8" + 8 3/8" casing

Notify N.M.O.C.C. in sufficient  
time to witness cementing  
the 8 3/8" casing

NEW MEXICO OIL CONSERVATION COMMISSION  
WELL LOCATION AND ACREAGE DEDICATION AT

Form C-102  
Supersedes C-128  
Effective 1-1-65

All distances must be from the outer boundaries of the Section.

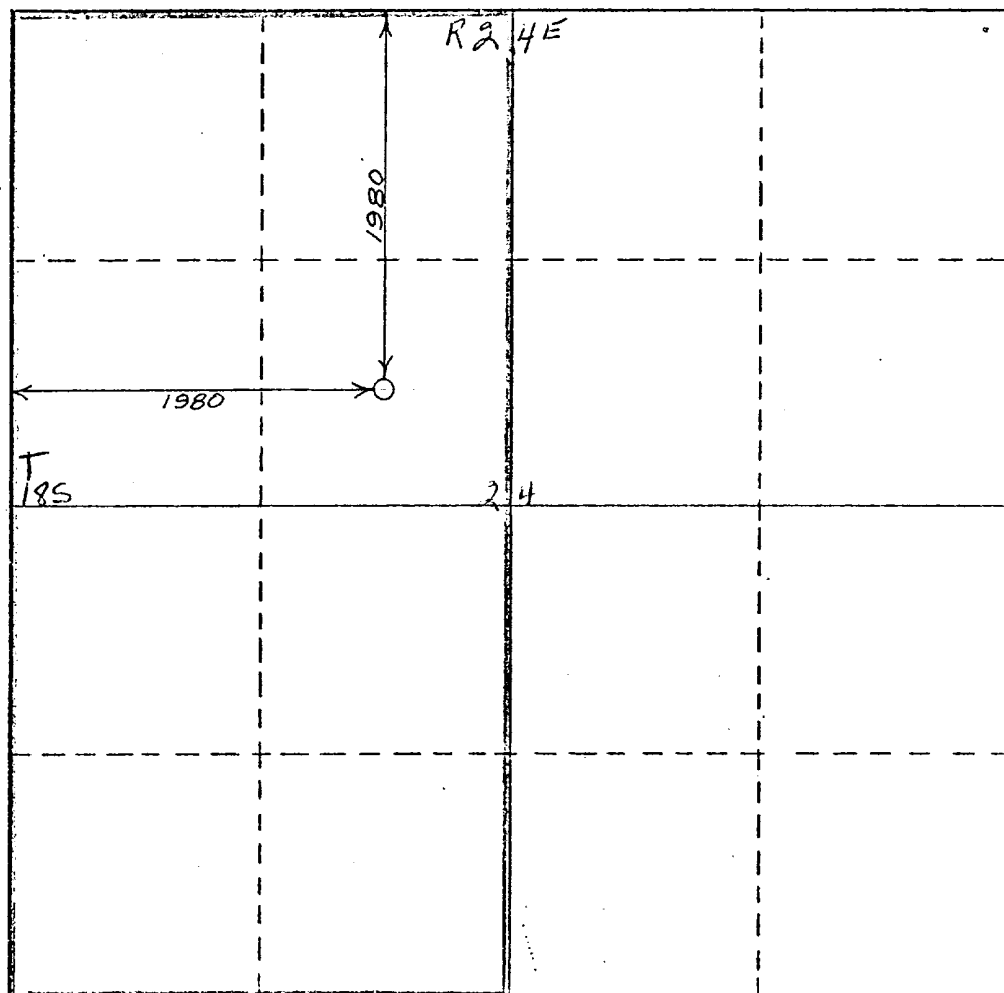
Operator <b>YATES PETROLEUM CORPORATION</b>			Lease <b>STATE HT</b>		Well No. <b>1</b>
Unit Letter <b>F</b>	Section <b>24</b>	Township <b>18 South</b>	Range <b>24 East</b>	County <b>Eddy</b>	
Actual Footage Location of Well:					
<b>1980</b> feet from the <b>North</b> line and		<b>1980</b> feet from the <b>West</b> line			
Ground Level Elev. <b>3637.5</b>	Producing Formation <b>Morrow</b>	Pool <b>Undesignated</b>	Dedicated Acreage: <b>320</b> Acres		

1. Outline the acreage dedicated to the subject well by colored pencil or hatchure marks on the plat below.
2. If more than one lease is dedicated to the well, outline each and identify the ownership thereof (both as to working interest and royalty).
3. If more than one lease of different ownership is dedicated to the well, have the interests of all owners been consolidated by communitization, unitization, force-pooling, etc?

☐ Yes ☐ No If answer is "yes," type of consolidation \_\_\_\_\_

If answer is "no," list the owners and tract descriptions which have actually been consolidated. (Use reverse side of this form if necessary.) \_\_\_\_\_

No allowable will be assigned to the well until all interests have been consolidated (by communitization, unitization, forced-pooling, or otherwise) or until a non-standard unit, eliminating such interests, has been approved by the Commission.



CERTIFICATION

I hereby certify that the information contained herein is true and complete to the best of my knowledge and belief.

*Eddie M. Mahfood*  
Name  
**Eddie M. Mahfood**

Position  
**Engineer**

Company  
**Yates Petroleum Corp.**

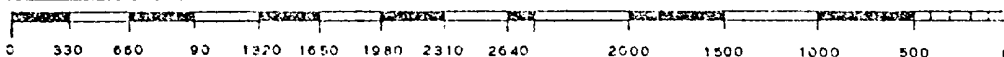
Date  
**5-7-77**

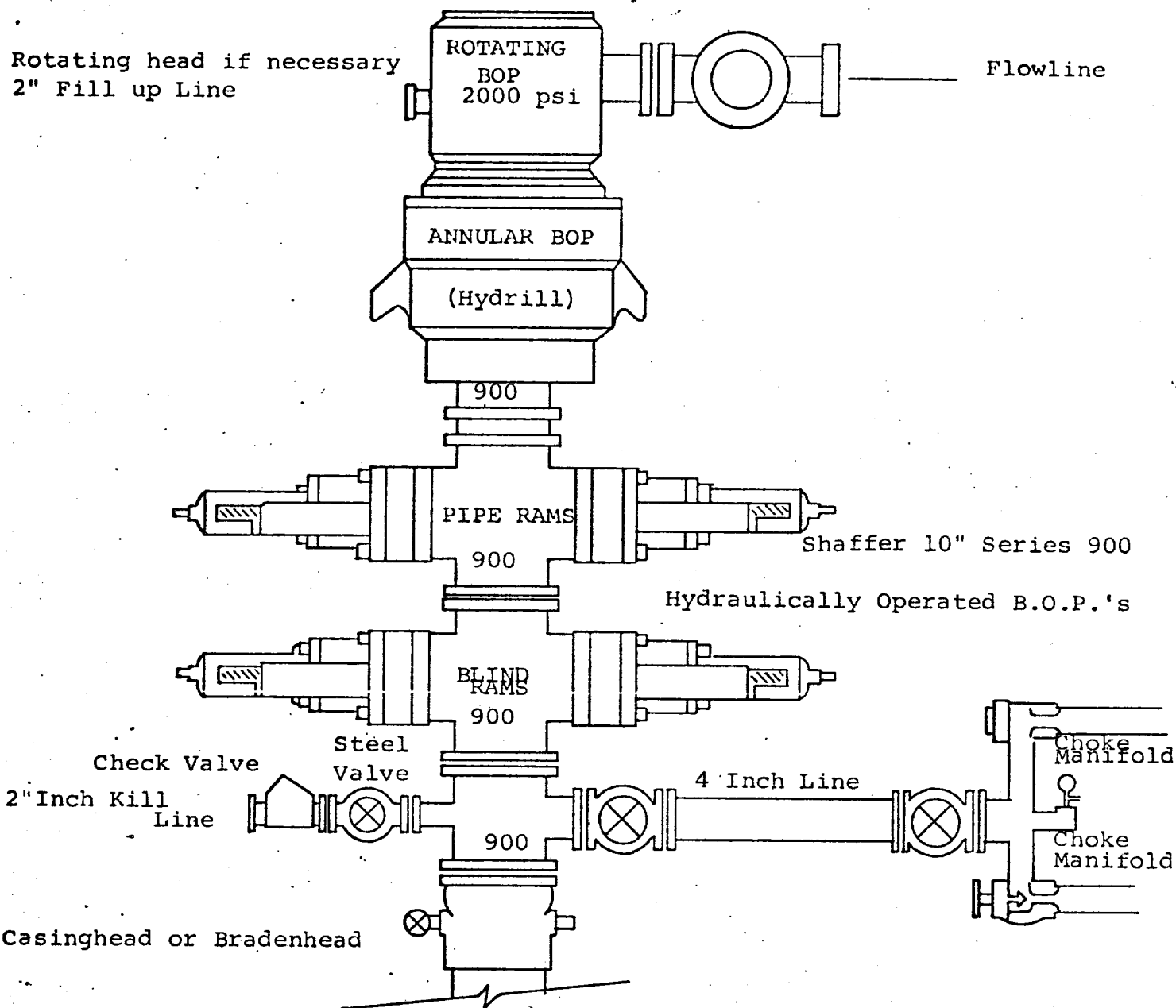
I hereby certify that the well location shown on this plat was plotted from field notes of actual surveys made by me or under my supervision, and that the same is true and correct to the best of my knowledge and belief.

Date Surveyed  
**4/28/77**

Registered Professional Engineer and/or Land Surveyor  
**6272**

*Michael S. Castillo*  
REGISTERED LAND SURVEYOR  
**6272**





THE FOLLOWING CONSTITUTE MINIMUM BLOWOUT PREVENTER REQUIREMENTS

1. All preventers to be hydraulically operated with secondary manual controls installed prior to drilling out from under casing.
2. Choke outlet to be a minimum of 4" diameter.
3. Kill line to be of all steel construction of 2" minimum diameter.
4. All connections from operating manifolds to preventers to be all steel. hole or tube a minimum of one inch in diameter.
5. The available closing pressure shall be at least 15% in excess of that required with sufficient volume to operate the B.O.P.'s.
6. All connections to and from preventer to have a pressure rating equivalent to that of the B.O.P.'s.
7. Inside blowout preventer to be available on rig floor.
8. Operating controls located a safe distance from the rig floor.
9. Hole must be kept filled on trips below intermediate casing. Operator not responsible for blowouts resulting from not keeping hole full.
10. D. P. float must be installed and used below zone of first gas intrusion.