

NEW MEXICO OIL CONSERVATION COMMISSION
WELL LOCATION AND ACREAGE DEDICATION PLAT

Form O-126
Supersedes O-126
Effective 1-1-65

All distances must be from the outer boundaries of the Section

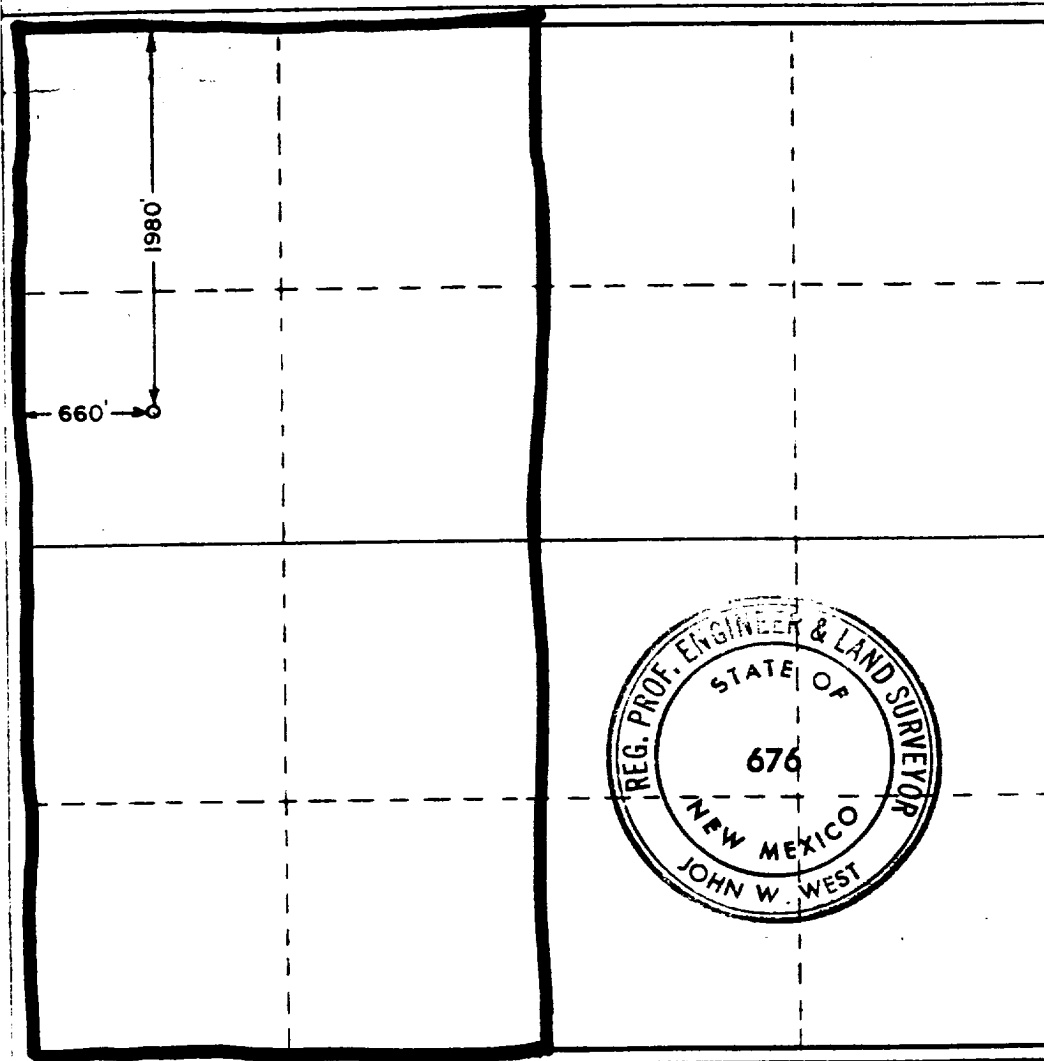
Operator Amoco Production Co.			Lease Empire South Deep Unit			Well No. 15		
East Letter E	Section 8	Township 18 South	Range 29 East	County Eddy				
Actual Footage Location of Well:								
1980		feet from the North		line and 660		feet from the West		Line
Ground Level Elev. 3540.3		Producing Formation Atoka		Pool Bear Grass Draw			Dedicated Acreage: 320 Acres	

- Outline the acreage dedicated to the subject well by colored pencil or hatchure marks on the plat below.
- If more than one lease is dedicated to the well, outline each and identify the ownership thereof (both as to working interest and royalty).
- If more than one lease of different ownership is dedicated to the well, have the interests of all owners been consolidated by communitization, unitization, force-pooling, etc?

☐ Yes ☐ No If answer is "yes," type of consolidation _____

If answer is "no," list the owners and tract descriptions which have actually been consolidated. (Use reverse side of this form if necessary.) _____

No allowable will be assigned to the well until all interests have been consolidated (by communitization, unitization, forced-pooling, or otherwise) or until a non-standard unit, eliminating such interests, has been approved by the Commission.



CERTIFICATION

I hereby certify that the information contained herein is true and complete to the best of my knowledge and belief.

Name H. J. Bevan
Position Stt. Admin. Analyst
Company Amoco Production

Date 12-2-92

I hereby certify that the well location shown on this plat was plotted from field notes of actual surveys made by me or under my supervision, and that the same is true and correct to the best of my knowledge and belief.

Date Surveyed June 20, 1977

Registered Professional Engineer and/or Land Surveyor

John W. West
Certificate No. **676**

0 230 660 100 1320 1680 2040 2400 2760 3120 3480 3840 4200 4560 4920 5280 5640 6000